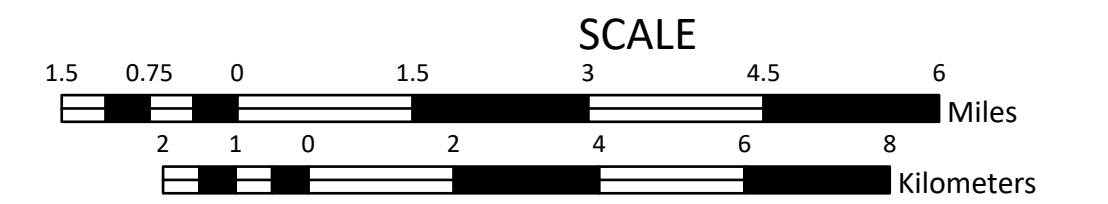
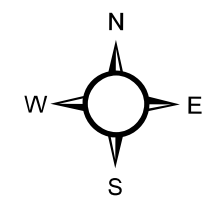


BIKEWAYS MAP ITASCA COUNTY MINNESOTA

PREPARED BY THE
MINNESOTA DEPARTMENT OF TRANSPORTATION
OFFICE OF TRANSPORTATION SYSTEM MANAGEMENT



2024



- City Centers**
 - State Capital
 - County Seat
 - City Center
- Cultural Features**
 - Historic District
 - Historic Marker
 - Historic Site
 - Monument
- Public Service Features**
 - Rest Area
 - Airports
 - Commercial
 - Limited
 - Seaplane
- Roadway Features**
 - Bikeways
 - On Road Bikeway
 - Off Road Bikeway
 - Off Road Mountain Bike
 - Other/Unknown
 - U.S. Bicycle Route System (USBR)
 - Annual Average Daily Traffic (AADT)
 - Lower Stress (< 3,000 vehicles/day)
 - Higher Stress (≥ 3,000 vehicles/day)
 - Paved Shoulder
 - Paved Shoulder 4' or Wider
 - Other Roadways
 - Trunk Highway
- Water and Boundary Features**
 - Lake, River, or Stream
 - Wetland
 - Park, Forest, or Wildlife Area
 - State of Minnesota
 - County Boundary
 - Tribal Land

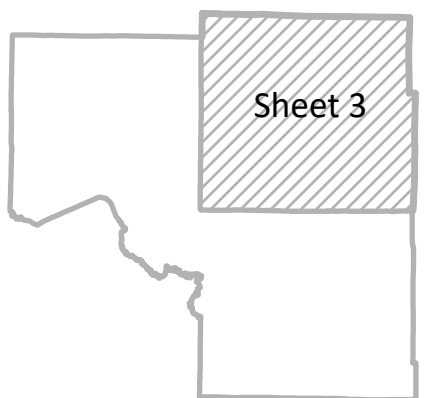
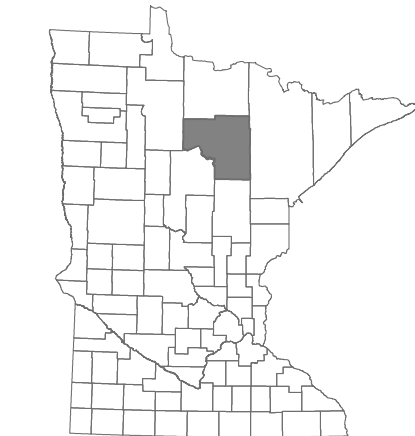
League of American Bicyclists' MN Bicycle Friendly Communities

As of February 2024

- Gold**
 - Minneapolis
- Silver**
 - Fergus Falls
 - Grand Marais
 - Hennepin County
 - Hutchinson
 - Jackson
 - Richfield
 - Saint Paul
 - Saint Louis Park
 - Walker
- Bronze**
 - Albert Lea
 - Battle Lake
 - Bemidji
 - Brainerd
 - Crosby
 - Detroit Lakes
- Bronze, Cont.**
 - Duluth
 - Edina
 - Fargo-Moorhead
 - Metropolitan Area
 - Frazee
 - Greater Grand Forks
 - Hopkins
 - La Crescent
 - Mankato & N. Mankato
 - Marshall
 - New Ulm
 - Rochester
 - Sartell
 - Saint Cloud
 - Stillwater
 - Thief River Falls
 - Willmar
 - Winona
 - Woodbury

Bicycle Friendly Community is a service mark of the League of American Bicyclists and is used with permission.

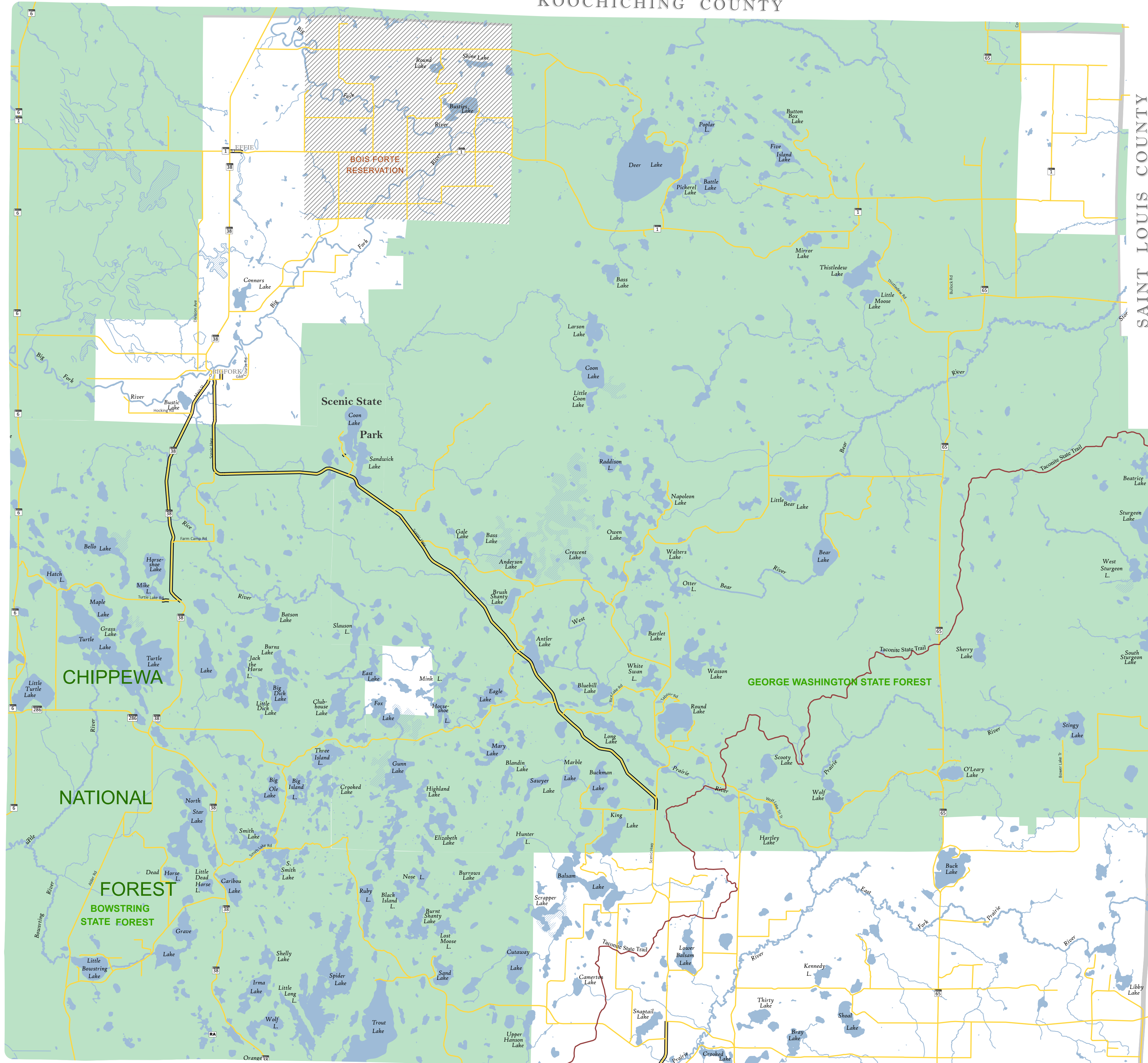
The State of Minnesota makes no representations or warranties expressed or implied, with respect to the reuse of the data provided herewith regardless of its format or the means of its transmission. There is no guarantee or representation to the user as to the accuracy, currency, suitability, or reliability of this data for any purpose. The user accepts the data "as is." The State of Minnesota assumes no responsibility for loss or damage incurred as a result of any user's reliance on this data. All maps and other material provided herein are protected by copyright. Permission is granted to copy and use the materials herein.



Projection: Transverse Mercator; NAD 1983; UTM Zone 15 N; North American Datum of 1983

SHEET 3 OF 3

ITASCA COUNTY (SHEET 2)



ITASCA COUNTY (SHEET 1)