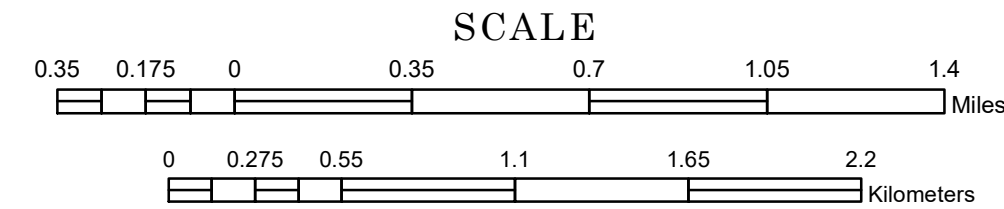


MUNICIPALITY OF  
WINONA

PREPARED BY THE  
MINNESOTA DEPARTMENT OF TRANSPORTATION  
OFFICE OF TRANSPORTATION SYSTEM MANAGEMENT

IN COOPERATION WITH  
U.S. DEPARTMENT OF TRANSPORTATION  
FEDERAL HIGHWAY ADMINISTRATION

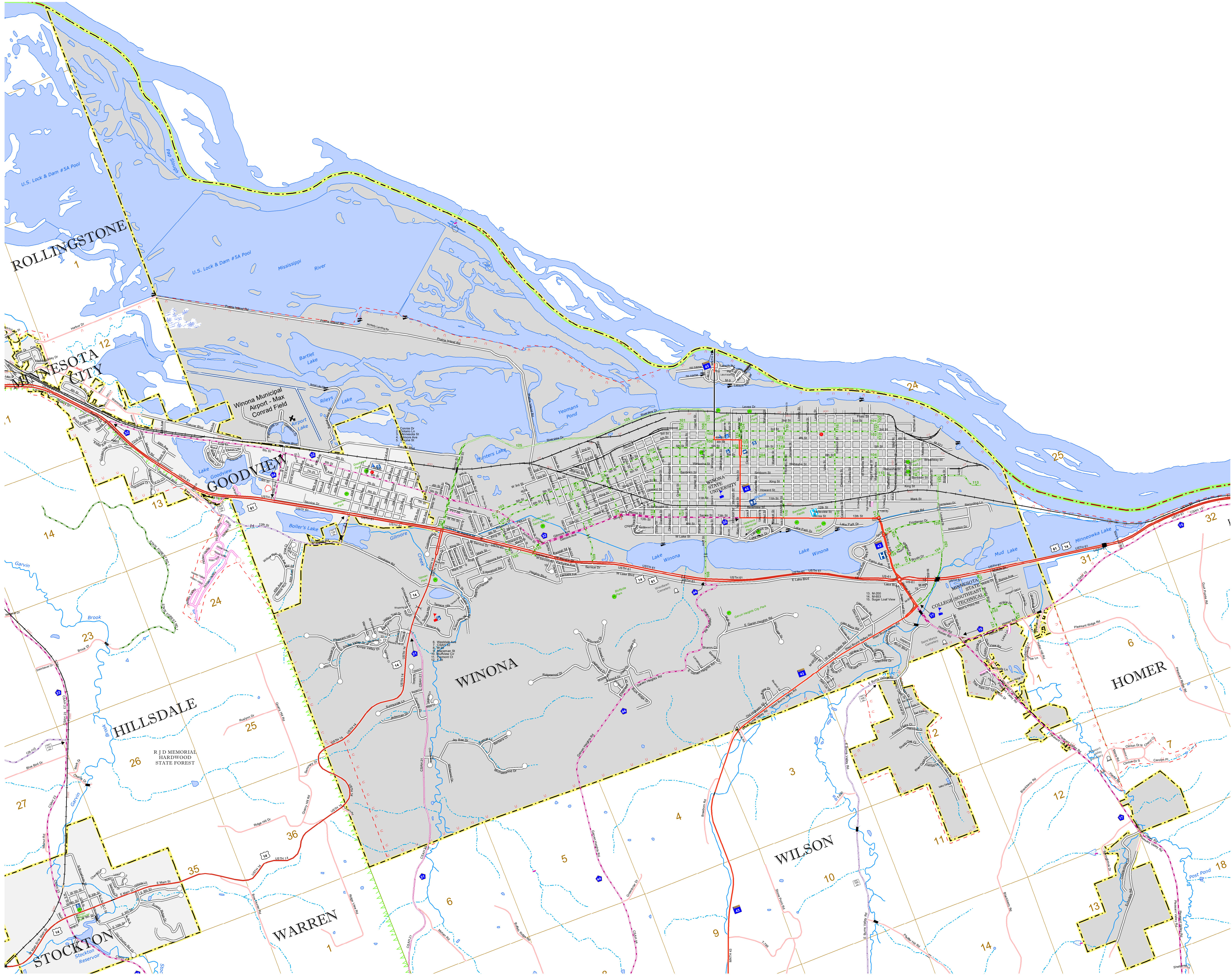


1 in = 2,000 ft  
2024

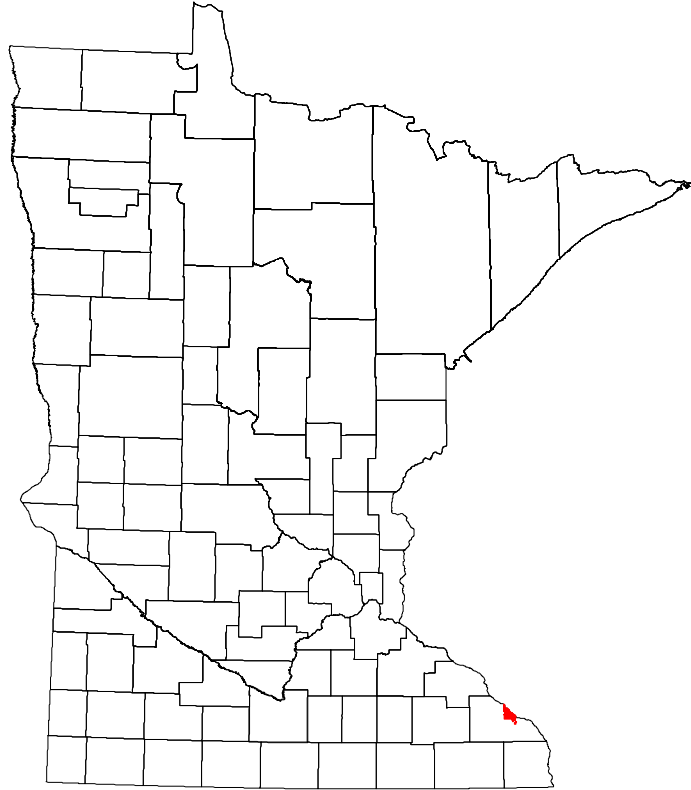
Projection:  
Transverse Mercator  
NAD 1986  
UTM Zone 15



North American Datum  
of 1986



ROAD AND ROADWAY FEATURES		PUBLIC SERVICE FEATURES	
INTERSTATE		MINOT OFFICE	
US HIGHWAY		MINOT TRUCK STATION	
MN HIGHWAY		HIGHWAY PATROL DISTRICT OFFICE	
COUNTY STATE AID HIGHWAY		STATE TRAVEL INFORMATION CENTER	
COUNTY ROAD		REST AREA (PAUL SERVICE)	
MUNICIPAL STREET		REST AREA (VAULT TOILET)	
MUNICIPAL STATE AID STREET		WAYSIDE (VAULT OR PLY TOILET)	
PRIVATE STREET/ROAD		PUBLIC ACCESS POINT	
TOWNSHIP ROAD		LOCAL PARK	
UNORGANIZED TERRITORY ROAD		FAIRGROUNDS	
RAMP OR CONNECTOR		PORT OF ENTRY	
INTERSTATE EXIT		PARK AND RIDE LOT	
GREAT RIVER ROAD		PUBLIC UNIVERSITY/COLLEGE	
OTHER ROADS		PRIVATE UNIVERSITY/COLLEGE	
Frontage		Elementary School	
Right-of-Way		Middle School	
Left-of-Way		High School	
RAILROAD AND RAILWAY FEATURES		AVIATION FEATURES	
RAILROAD		COMMERCIAL AIRPORT	
EMPIRE BUILDER STATION (AMTRAK)		GENERAL AIRPORT	
NORTHSTAR STATION (COMMUTER)		AIRSTRIP	
LIGHT RAIL		SEAPLANE	
BLUE LINE STATION		AIRPORT RUNWAY	
GREEN LINE STATION			
INFRASTRUCTURE FEATURES		CULTURAL FEATURES	
LONG BRIDGE (100' OR GREATER SPAN)		STATE HISTORICAL MARKER	
MAJOR BRIDGE (20' TO 100' SPAN)		HISTORIC SITE	
MINOR BRIDGE (5' TO 20' SPAN)		MONUMENT	
ROAD TUNNEL (100' OR GREATER SPAN)		CENETERY	
RAILROAD BRIDGE (100' OR GREATER SPAN)			
RAILROAD BRIDGE (UNDER 100' SPAN)		BOUNDARY FEATURES	
BOATWAY		TRIBAL LAND	
PEDESTRIAN BRIDGE		COUNTY	
PEDESTRIAN TUNNEL		MUNICIPALITY	
DAM		ADJACENT MUNICIPALITY	
LOCK AND DAM		FEDERAL ADJUSTED URBAN AREA (2014)	
PUBLIC FACILITIES		HYDROLOGIC FEATURES	
STATE CAPITOL		RIVER OR STREAM (PERENNIAL)	
FEDERAL COURTHOUSE		LAKE, POND OR RESERVOIR	
COUNTY COURTHOUSE		STREAM (INTERMITTENT)	
ARMORY		DRAINAGE DITCH	
CITY HALL		WETLAND	
TOWN HALL		ISLAND OR LAND	
COMMUNITY CENTER		REGIONAL WATERSHED	
ARENA			
STADIUM			
POST OFFICE			
POLICE STATION			
FIRE STATION			
PUBLIC LIBRARY			
PUBLIC MUSEUM			
EVENT CENTER			
CITY CENTERS			
TRIBAL GOVERNMENT CENTER			
CITY CENTER			
LOCALLY KNOWN PLACE			
UNINCORPORATED COMMUNITY			



To request information from this document in an alternative format, call 651-366-4718 or 1-800-657-3774 (Greater Minnesota); 711 or 1-800-627-3529 (Minnesota Relay). You may also send an e-mail to [ADArequest.dot@state.mn.us](mailto:ADArequest.dot@state.mn.us). (Please request at least one week in advance.)

LAST EDITED ON 11-04-2024

Population (U.S. Census 2020): 25,948