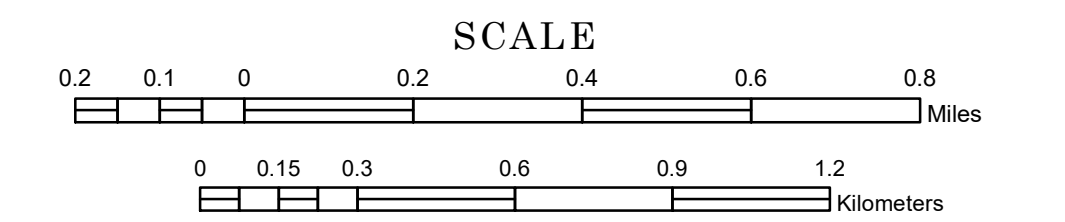


# MUNICIPALITY OF GRANITE FALLS

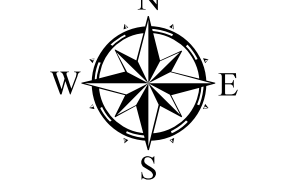
PREPARED BY THE  
MINNESOTA DEPARTMENT OF TRANSPORTATION  
OFFICE OF TRANSPORTATION SYSTEM MANAGEMENT

IN COOPERATION WITH  
U.S. DEPARTMENT OF TRANSPORTATION  
FEDERAL HIGHWAY ADMINISTRATION

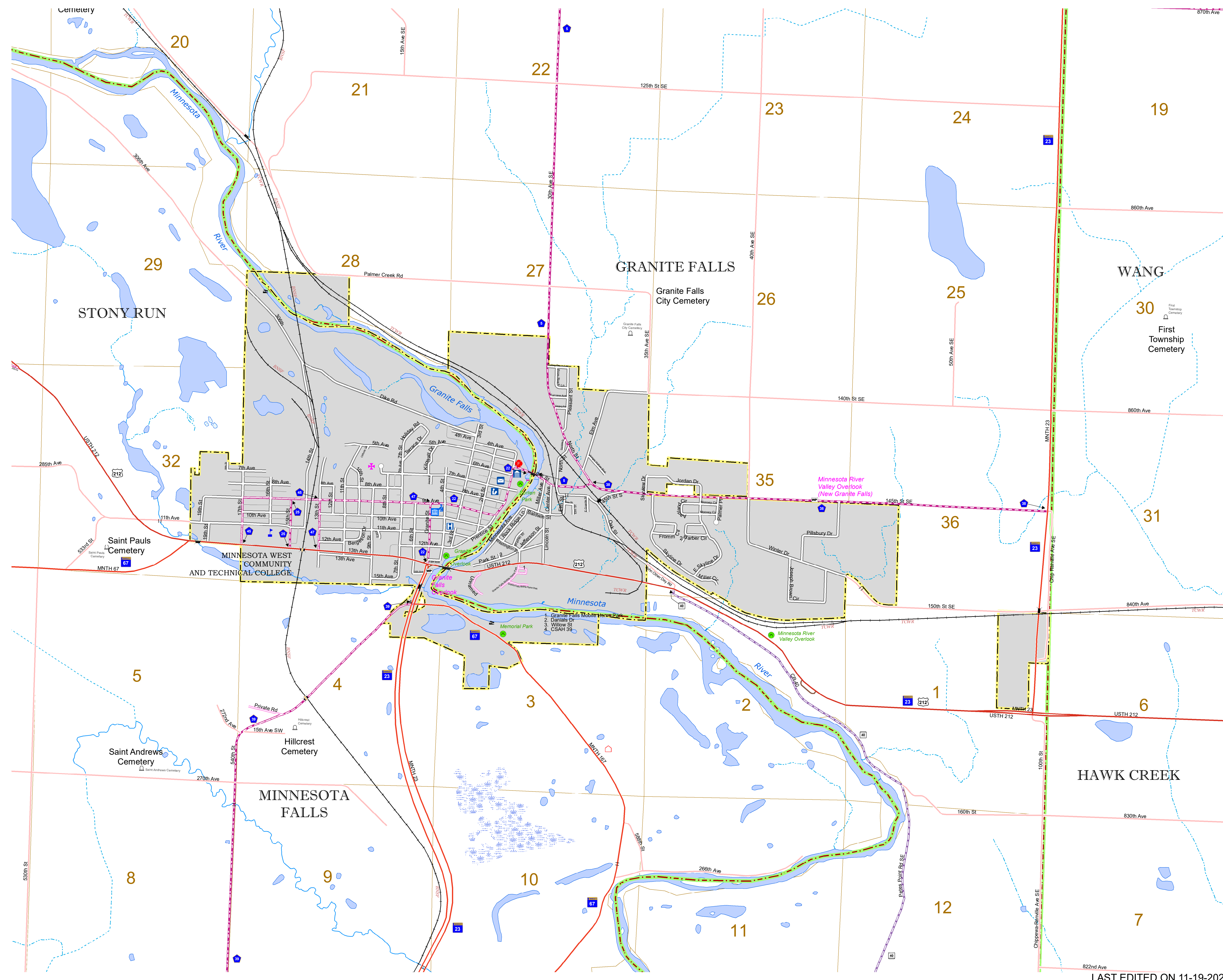


1 in = 1,200 ft  
**2024**

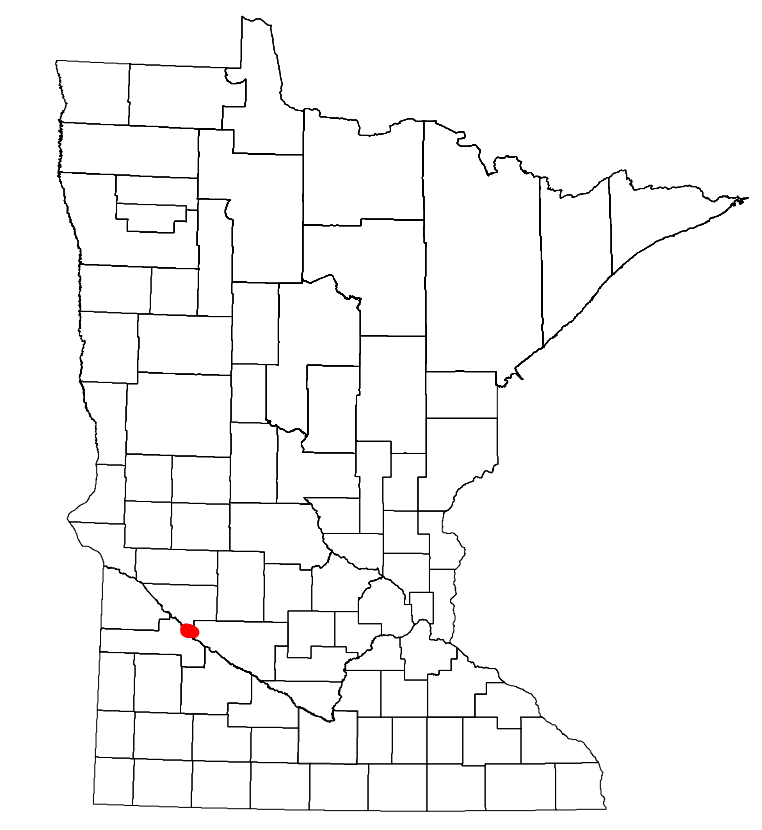
Projection:  
Transverse Mercator  
NAD 1986  
UTM Zone 15



North American Datum  
of 1986



ROAD AND ROADWAY FEATURES	PUBLIC SERVICE FEATURES
INTERSTATE	MINIOT OFFICE
US HIGHWAY	MINIOT TRUCK STATION
STATE HIGHWAY	HIGHWAY PATROL DISTRICT OFFICE
COUNTY STATE AID HIGHWAY	STATE TRAVEL INFORMATION CENTER
COUNTY ROAD	REST AREA (Full Service)
MUNICIPAL STREET	REST AREA (Quick Turn)
MUNICIPAL STATE AID STREET	WAYSIDE (Only on Pkwy/Torx)
PRIVATE STREET/ROAD	PUBLIC ACCESS POINT
TOWNSHIP ROAD	LOCAL PARK
UNORGANIZED TERRITORY ROAD	FARMS/GROUNDS
RAMP OR CONNECTOR	PORT OF ENTRY
INTERSTATE EXIT	PARK AND RIDE LOT
GREAT RIVER ROAD	PUBLIC UNIVERSITY/COLLEGE
OTHER ROADS	FARMHOUSE
RAILROAD AND RAILWAY FEATURES	STATE PARK
EMPIRE BUILDER STATION (AMTRAK)	NATIONAL MONUMENT
NORTHBSTAR STATION (COMMUTER)	NATIONAL FOREST
LIGHT RAIL	STATE FOREST
BLUE LINE STATION	MUNICIPALITY
GREEN LINE STATION	ADJACENT MUNICIPALITY
INFRASTRUCTURE FEATURES	FEDERAL ADJUSTED URBAN AREA (2014)
LONG BRIDGE (100' OR GREATER SPAN)	MILITARY
RAILROAD BRIDGE (100' OR GREATER SPAN)	STATE PARK
RAILROAD BRIDGE (UNDER 100' SPAN)	REGIONAL PARK
SKYWAY	NATIONAL FOREST
PEDESTRIAN BRIDGE	NATIONAL AND STATE FOREST
PEDESTRIAN TUNNEL	STATE FOREST
DAM	NATIONAL TRAIL
LOCK AND DAM	WILDLIFE REFUGE AREA
PUBLIC FACILITIES	WILDLIFE MANAGEMENT AREA
STATE CAPITOL	HYDROLOGIC FEATURES
FEDERAL COURTHOUSE	RIVER OR STREAM (PERMANENT)
COUNTY COURTHOUSE	LAKE, POND OR RESERVOIR
ARMORY	STREAM (INTERMITTENT)
CITY HALL	DRAINAGE DITCH
COMMUNITY CENTER	WETLAND
ARENA	ISLAND OR LAND
STADIUM	REGIONAL WATERSHED
POST OFFICE	
POLICE STATION	
FIRE STATION	
PUBLIC LIBRARY	
PUBLIC MUSEUM	
EVENT CENTER	
CITY CENTERS	
TRIBAL GOVERNMENT CENTER	
CITY CENTER	
LOCALLY INCORPORATED PLACE	
UNINCORPORATED COMMUNITY	



LAST EDITED ON 11-19-2024

Population (U.S. Census 2020): 2737

To request information from this document in an alternative format, call 651-366-4718 or 1-800-657-3774 (Greater Minnesota); 711 or 1-800-627-3529 (Minnesota Relay). You may also send an e-mail to ADarequest.dot@state.mn.us. (Please request at least one week in advance.)