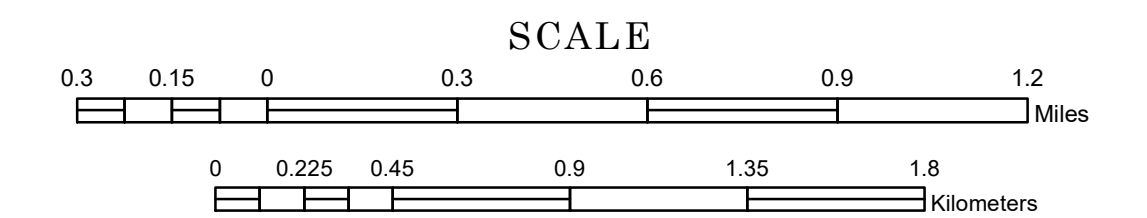


MUNICIPALITY OF PINE ISLAND

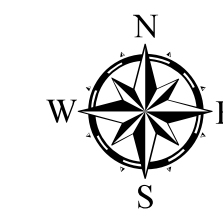
PREPARED BY THE
MINNESOTA DEPARTMENT OF TRANSPORTATION
OFFICE OF TRANSPORTATION SYSTEM MANAGEMENT

IN COOPERATION WITH
U.S. DEPARTMENT OF TRANSPORTATION
FEDERAL HIGHWAY ADMINISTRATION

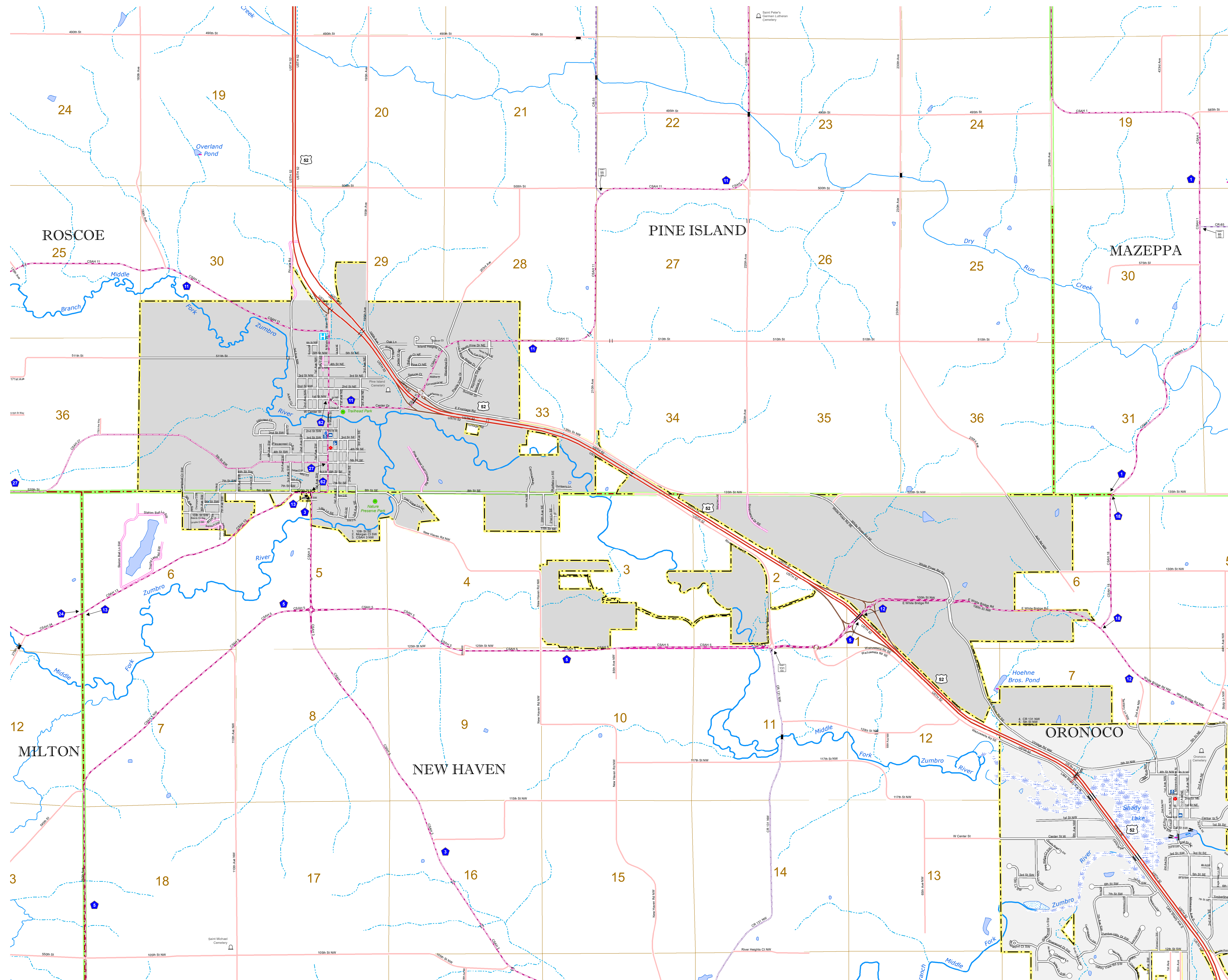


1 in = 1,600 ft
2024

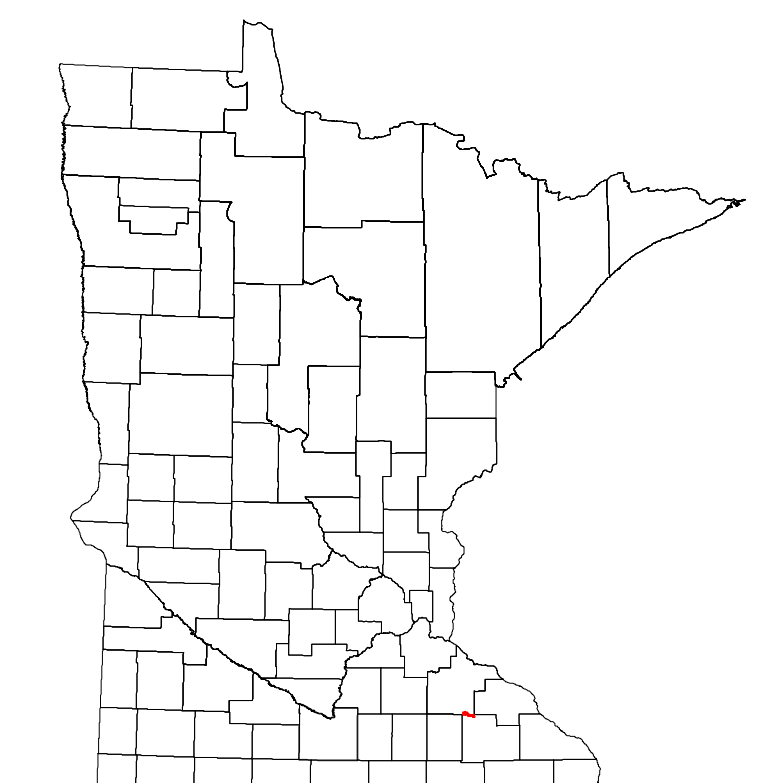
Projection:
Transverse Mercator
NAD 1986
UTM Zone 15



North American Datum
of 1986



| ROAD AND ROADWAY FEATURES | PUBLIC SERVICE FEATURES |
|--|------------------------------------|
| INTERSTATE | MINIOT OFFICE |
| US HIGHWAY | MINIOT TRUCK STATION |
| MIN HIGHWAY | HIGHWAY PATROL DISTRICT OFFICE |
| COUNTY STATE AID HIGHWAY | STATE TRAVEL INFORMATION CENTER |
| COUNTY ROAD | REST AREA (FULL SERVICE) |
| MUNICIPAL STREET | REST AREA (VAULT TRAILS) |
| MUNICIPAL STATE AID STREET | WAYSIDE (WAIT OR PIT TRAILS) |
| PRIVATE STREET/ROAD | PUBLIC ACCESS POINT |
| TOWNSHIP ROAD | LOCAL PARK |
| UNORGANIZED TERRITORY ROAD | FAIRGROUNDS |
| RAMP OR CONNECTOR | PORT OF ENTRY |
| INTERSTATE EXIT | PARK AND RIDE LOT |
| GREAT RIVER ROAD | PUBLIC UNIVERSITY/COLLEGE |
| OTHER ROAD | PRIVATE UNIVERSITY/COLLEGE |
| FRONTAGE | NATIONAL FOREST |
| STATE PARK | STATE FOREST |
| NATIONAL FOREST | ELEMENTARY SCHOOL |
| STATE FOREST | MIDDLE SCHOOL |
| NATIONAL WILDLIFE STATE CARE | HIGH SCHOOL |
| RAILROAD AND RAILWAY FEATURES | AVIATION FEATURES |
| EMPIRE BUILDER STATION (AMTRAK) | COMMERCIAL AIRPORT |
| NORTHSTAR STATION (COMMUTER) | GENERAL AIRPORT |
| LIGHT RAIL | AIRSTRIP |
| BLUE LINE STATION | SEAPLANE |
| GREEN LINE STATION | AIRPORT RUNWAY |
| INFRASTRUCTURE FEATURES | CULTURAL FEATURES |
| LONG BRIDGE (100' OR GREATER SPAN) | STATE HISTORICAL MARKER |
| MAJOR BRIDGE (20' TO 100' SPAN) | HISTORIC DISTRICT |
| MINOR BRIDGE (5' TO 20' SPAN) | HISTORIC SITE |
| ROAD TUNNEL (100' OR GREATER SPAN) | MONUMENT |
| RAILROAD BRIDGE (100' OR GREATER SPAN) | CEMETERY |
| RAILROAD BRIDGE (UNDER 100' SPAN) | BOUNDARY FEATURES |
| SKYWAY | TRIBAL LAND |
| PEDESTRIAN BRIDGE | COUNTY |
| PEDESTRIAN TUNNEL | MUNICIPALITY |
| DAM | ADJACENT MUNICIPALITY |
| LOCK AND DAM | FEDERAL ADJUSTED URBAN AREA (2014) |
| PUBLIC FACILITIES | MILITARY |
| FEDERAL CAPITOL | STATE PARK |
| FEDERAL COURTHOUSE | REGIONAL PARK |
| COUNTY COURTHOUSE | NATIONAL FOREST |
| ARMORY | NATIONAL AND STATE FOREST |
| CITY HALL | STATE FOREST |
| TOWN HALL | NATIONAL TRAIL |
| COMALITY CENTER | WILDLIFE REFUGES AREA |
| ARENA | WILDLIFE MANAGEMENT AREA |
| STADIUM | HYDROLOGIC FEATURES |
| POST OFFICE | RIVER OR STREAM (PERENNIAL) |
| POLICE STATION | LAKE, POND OR RESERVOIR |
| FIRE STATION | STREAM (INTERMITTENT) |
| PUBLIC LIBRARY | IRRIGATION DITCH |
| PUBLIC MUSEUM | WETLAND |
| EVENT CENTER | ISLAND OR LAND |
| CITY CENTERS | REGIONAL WATERSHED |
| TRIBAL GOVERNMENT CENTER | |
| CITY CENTER | |
| LOCALLY KNOWN PLACE | |
| UNINCORPORATED COMMUNITY | |



Population (U.S. Census 2020): 3,769

To request information from this document in an alternative format, call 651-366-4718 or 1-800-657-3774 (Greater Minnesota); 711 or 1-800-627-3529 (Minnesota Relay). You may also send an e-mail to ADRequest.dot@state.mn.us. (Please request at least one week in advance.)

LAST EDITED ON 11-04-2024