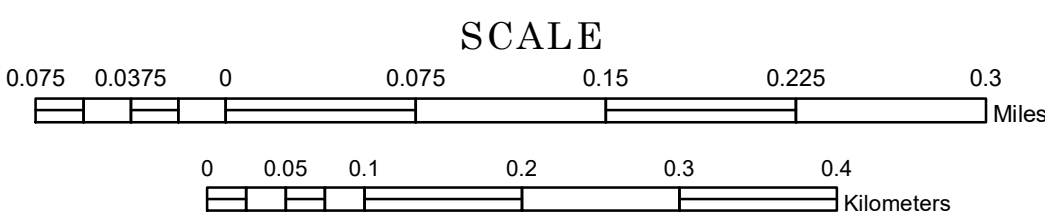


MUNICIPALITY OF
STRANDQUIST

PREPARED BY THE
MINNESOTA DEPARTMENT OF TRANSPORTATION
OFFICE OF TRANSPORTATION SYSTEM MANAGEMENT

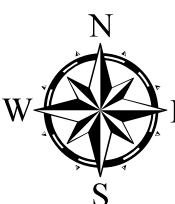
IN COOPERATION WITH
U.S. DEPARTMENT OF TRANSPORTATION
FEDERAL HIGHWAY ADMINISTRATION



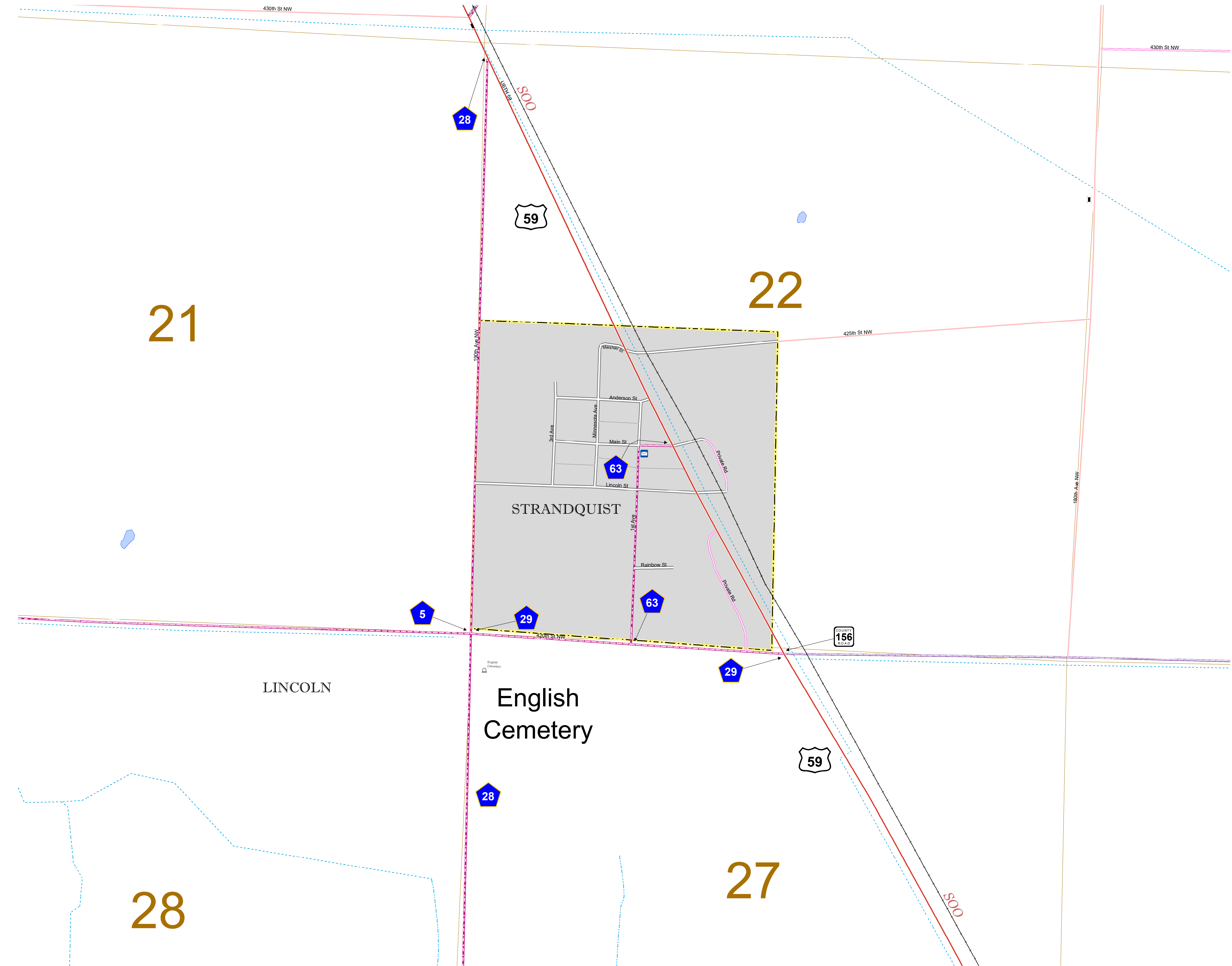
1 in = 400 ft

2024

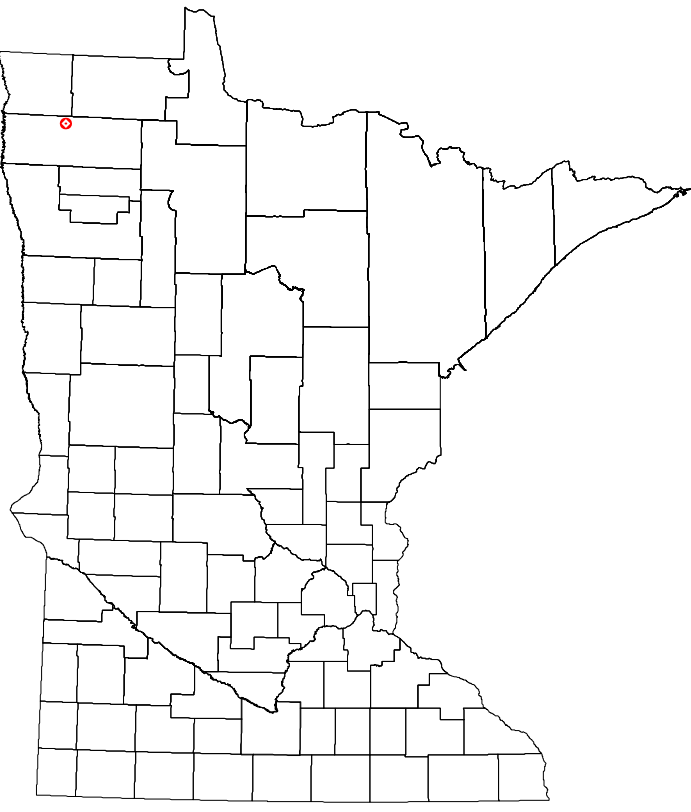
Projection:
Transverse Mercator
NAD 1986
UTM Zone 15



North American Datum
of 1986



ROAD AND ROADWAY FEATURES		PUBLIC SERVICE FEATURES	
INTERSTATE		MINOT OFFICE	
US HIGHWAY		MINOT TRUCK STATION	
BN HIGHWAY		HIGHWAY PATROL DISTRICT OFFICE	
COUNTY STATE AID HIGHWAY		STATE TRAVEL INFORMATION CENTER	
COUNTY ROAD		REST AREA (FULL SERVICE)	
MUNICIPAL STREET		REST AREA (NIGHT SERVICE)	
MUNICIPAL STATE AID STREET		WAYSIDE (NIGHT OR PM TRUCKS)	
PRIVATE STREET/ROAD		PUBLIC ACCESS POINT	
TOWNSHIP ROAD		LOCAL PARK	
UNORGANIZED TERRITORY ROAD		FAIRGROUNDS	
RAMP OR CONNECTOR		PORT OF ENTRY	
INTERSTATE EXIT		PARK AND RIDE LOT	
GREAT RIVER ROAD		PUBLIC UNIVERSITY/COLLEGE	
OTHER ROADS		PRIVATE UNIVERSITY/COLLEGE	
FARMROAD		ELEMENTARY SCHOOL	
STATE PARK		MIDDLE SCHOOL	
NATIONAL PARK		HIGH SCHOOL	
NATIONAL MONUMENT		AVIATION FEATURES	
STATE FOREST		COMMERCIAL AIRPORT	
NATIONAL FOREST		GENERAL AIRPORT	
STATE GAME		AIRSTRIPE	
RAILROAD AND RAILWAY FEATURES		SEAPLANE	
RAILROAD		AIRPORT RUNWAY	
RAILROAD BRIDGE (100' OR GREATER SPAN)		CULTURAL FEATURES	
RAILROAD BRIDGE (20' TO 100' SPAN)		STATE HISTORICAL MARKER	
RAILROAD BRIDGE (20' TO 20' SPAN)		HISTORIC DISTRICT	
RAILROAD BRIDGE (20' TO 20' SPAN)		HISTORIC SITE	
RAILROAD BRIDGE (20' TO 20' SPAN)		MONUMENT	
RAILROAD BRIDGE (20' TO 20' SPAN)		CEMETERY	
RAILROAD BRIDGE (20' TO 20' SPAN)		BOUNDARY FEATURES	
RAILROAD BRIDGE (20' TO 20' SPAN)		TRIBAL LAND	
RAILROAD BRIDGE (20' TO 20' SPAN)		COUNTY	
RAILROAD BRIDGE (20' TO 20' SPAN)		MUNICIPALITY	
RAILROAD BRIDGE (20' TO 20' SPAN)		ADJACENT MUNICIPALITY	
RAILROAD BRIDGE (20' TO 20' SPAN)		FEDERAL ADJUSTED URBAN AREA (2014)	
RAILROAD BRIDGE (20' TO 20' SPAN)		MILITARY	
RAILROAD BRIDGE (20' TO 20' SPAN)		STATE PARK	
RAILROAD BRIDGE (20' TO 20' SPAN)		REGIONAL PARK	
RAILROAD BRIDGE (20' TO 20' SPAN)		NATIONAL FOREST	
RAILROAD BRIDGE (20' TO 20' SPAN)		NATIONAL AND STATE FOREST	
RAILROAD BRIDGE (20' TO 20' SPAN)		STATE FOREST	
RAILROAD BRIDGE (20' TO 20' SPAN)		NATIONAL TRAIL	
RAILROAD BRIDGE (20' TO 20' SPAN)		WILDLIFE REFUGE AREA	
RAILROAD BRIDGE (20' TO 20' SPAN)		WILDLIFE MANAGEMENT AREA	
RAILROAD BRIDGE (20' TO 20' SPAN)		HYDROLOGIC FEATURES	
RAILROAD BRIDGE (20' TO 20' SPAN)		RIVER OR STREAM (PERMANENT)	
RAILROAD BRIDGE (20' TO 20' SPAN)		LAKE, POND OR RESERVOIR	
RAILROAD BRIDGE (20' TO 20' SPAN)		STREAM (PERMANENT)	
RAILROAD BRIDGE (20' TO 20' SPAN)		DRAINAGE DITCH	
RAILROAD BRIDGE (20' TO 20' SPAN)		WETLAND	
RAILROAD BRIDGE (20' TO 20' SPAN)		ISLAND OR LAND	
RAILROAD BRIDGE (20' TO 20' SPAN)		REGIONAL WATERSHED	
RAILROAD BRIDGE (20' TO 20' SPAN)			



To request information from this document in an alternative format, call 651-366-4718 or 1-800-657-3774 (Greater Minnesota); 711 or 1-800-627-3529 (Minnesota Relay). You may also send an e-mail to ADArequest.dot@state.mn.us. (Please request at least one week in advance.)

LAST EDITED ON 11-19-2024

Population (U.S. Census 2020): 70