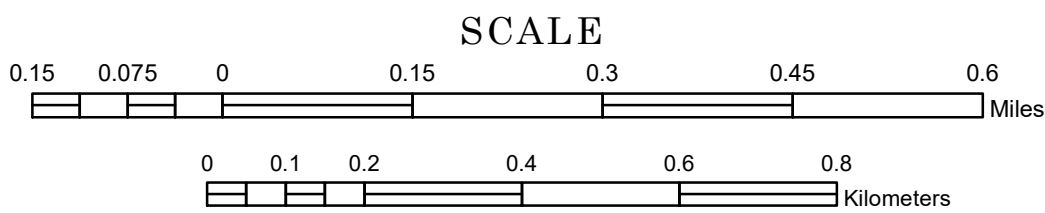


MUNICIPALITY OF
MILACA

PREPARED BY THE
MINNESOTA DEPARTMENT OF TRANSPORTATION
OFFICE OF TRANSPORTATION SYSTEM MANAGEMENT

IN COOPERATION WITH
U.S. DEPARTMENT OF TRANSPORTATION
FEDERAL HIGHWAY ADMINISTRATION



1 in = 800 ft

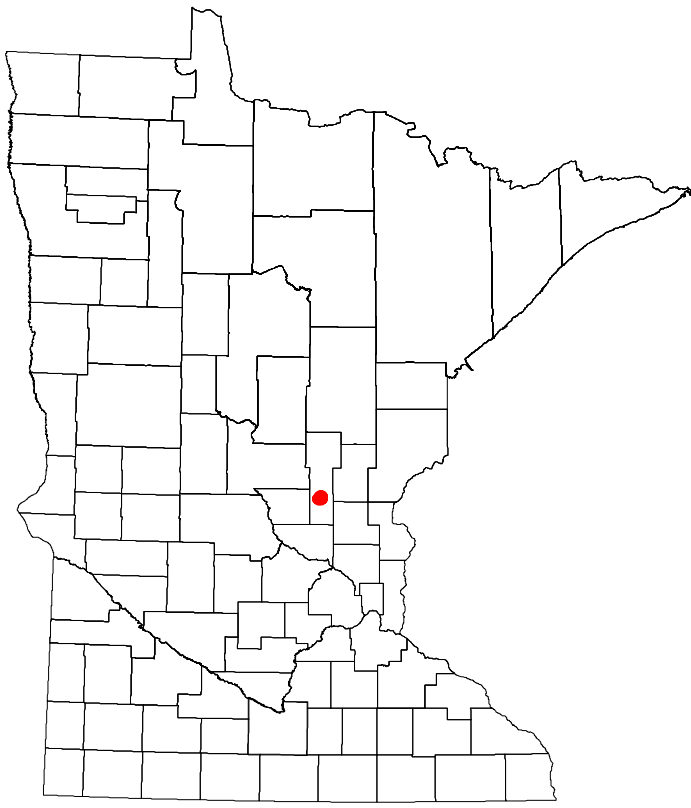
2024

Projection:
Transverse Mercator
NAD 1986
UTM Zone 15

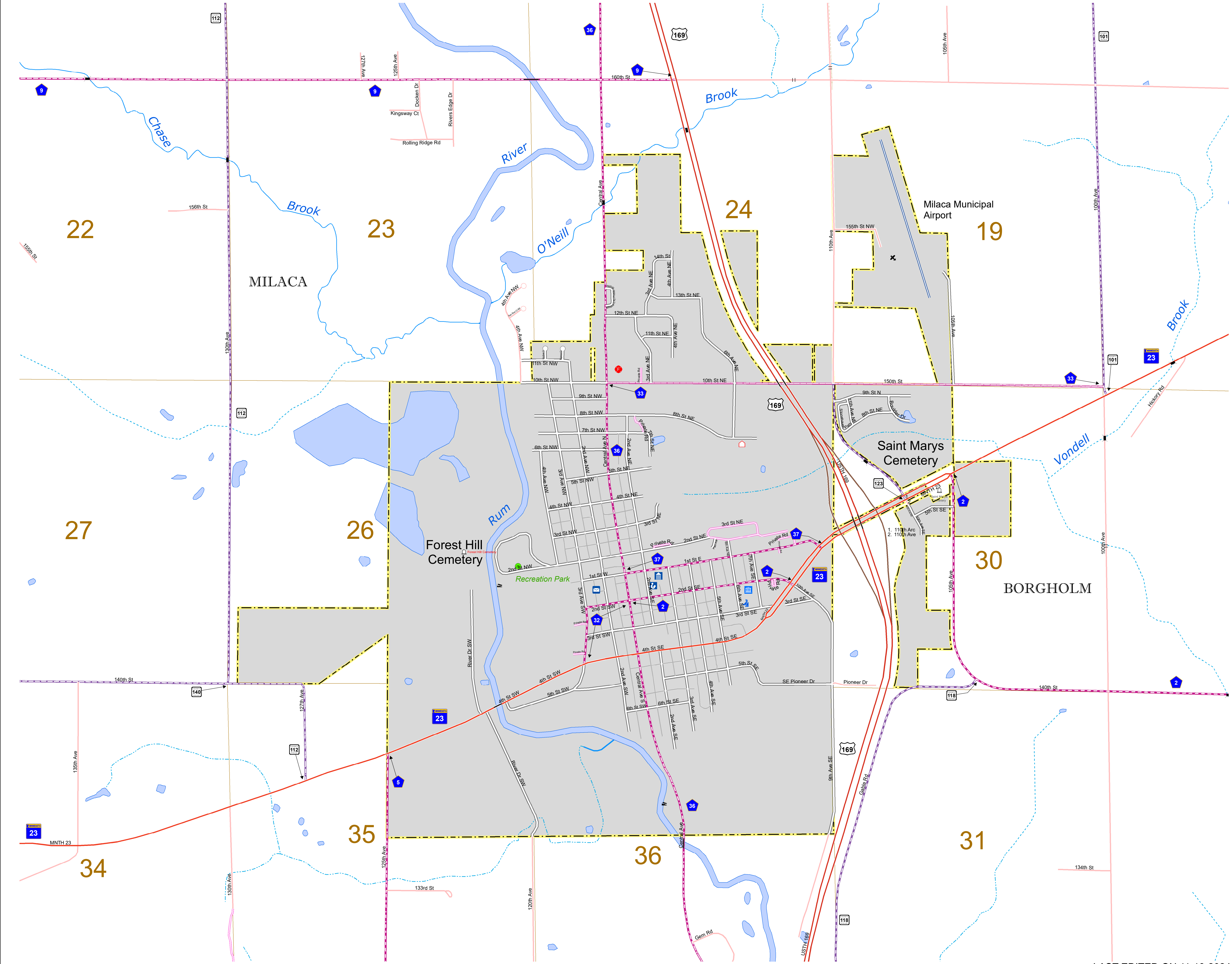


North American Datum
of 1986

ROAD AND ROADWAY FEATURES		PUBLIC SERVICE FEATURES	
INTERSTATE		MINDOT OFFICE	
US HIGHWAY		MINDOT TRUCK STATION	
MIN HIGHWAY		HIGHWAY PATROL DISTRICT OFFICE	
COUNTY STATE AID HIGHWAY		STATE TRAVEL INFORMATION CENTER	
COUNTY ROAD		REST AREA (FULL SERVICE)	
MUNICIPAL STREET		REST AREA (NIGHT SERVICE)	
MUNICIPAL STATE AID STREET		WAYSIDE (NIGHT OR PH TRUCK)	
PRIVATE STREET/ROAD		PUBLIC ACCESS POINT	
TOWNSHIP ROAD		LOCAL PARK	
UNORGANIZED TERRITORY ROAD		FARMS/ROADS	
RAMP OR CONNECTOR		PORT OF ENTRY	
INTERSTATE EXIT		PARK AND RIDE LOT	
GREAT RIVER ROAD		PUBLIC UNIVERSITY/COLLEGE	
OTHER ROADS		PRIVATE UNIVERSITY/COLLEGE	
RAILROAD AND RAILWAY FEATURES		ELEMENTARY SCHOOL	
RAILROAD		MIDDLE SCHOOL	
EMPIRE BUILDER STATION (AIRTRAIL)		HIGH SCHOOL	
NORTHSTAR STATION (COMMUTER)		AVIATION FEATURES	
BLUE LINE STATION		COMMERCIAL AIRPORT	
GREEN LINE STATION		GENERAL AIRPORT	
INFRASTRUCTURE FEATURES		AIRSTRIP	
LONG BRIDGE (100' OR GREATER SPAN)		SEAPLANE	
MAJOR BRIDGE (20' TO 100' SPAN)		AIRPORT RUNWAY	
MINOR BRIDGE (2' TO 20' SPAN)		CULTURAL FEATURES	
ROAD TUNNEL (100' OR GREATER SPAN)		STATE HISTORICAL MARKER	
RAILROAD BRIDGE (UNDER 100' SPAN)		HISTORIC DISTRICT	
SKYWAY		HISTORIC SITE	
PEDESTRIAN BRIDGE		MONUMENT	
PEDESTRIAN TUNNEL		CEMETERY	
DAM		BOUNDARY FEATURES	
LOCK AND DAM		TRIBAL LAND	
PUBLIC FACILITIES		COUNTY	
STATE CAPITOL		MUNICIPALITY	
FEDERAL COURTHOUSE		ADJACENT MUNICIPALITY	
COUNTY COURTHOUSE		FEDERAL ADJUSTED URBAN AREA (2014)	
ARMORY		MILITARY	
CITY HALL		STATE PARK	
TOWN HALL		REGIONAL PARK	
COMMUNITY CENTER		NATIONAL FOREST	
ARENA		NATIONAL AND STATE FOREST	
STADIUM		STATE FOREST	
POST OFFICE		NATIONAL TRAIL	
POLICE STATION		WILDLIFE REFUGE AREA	
FIRE STATION		WILDLIFE MANAGEMENT AREA	
PUBLIC LIBRARY		HYDROLOGIC FEATURES	
PUBLIC MUSEUM		RIVER OR STREAM (PERMANENT)	
EVENT CENTER		LAKE, POND OR RESERVOIR	
CITY CENTERS		STREAM (INTERMITTENT)	
TRIBAL GOVERNMENT CENTER		DRAINAGE DITCH	
CITY CENTER		WETLAND	
LOCALLY KNOWN PLACE		ISLAND OR LAND	
UNINCORPORATED COMMUNITY		REGIONAL WATERSHED	



Population (U.S. Census 2020): 3021



To request information from this document in an alternative format, call 651-366-4718 or 1-800-657-3774 (Greater Minnesota); 711 or 1-800-627-3529 (Minnesota Relay). You may also send an e-mail to ADArequest.dot@state.mn.us. (Please request at least one week in advance.)

LAST EDITED ON 11-19-2024