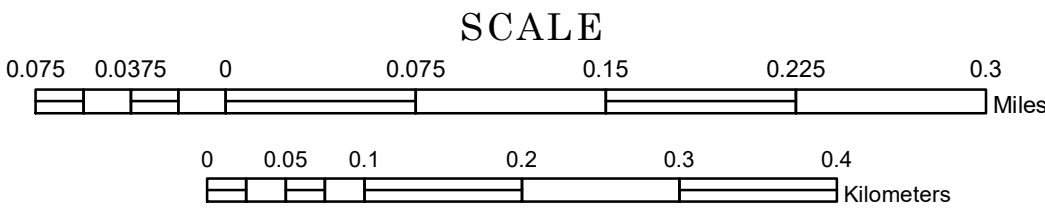


MUNICIPALITY OF FARWELL

PREPARED BY THE
MINNESOTA DEPARTMENT OF TRANSPORTATION
OFFICE OF TRANSPORTATION SYSTEM MANAGEMENT

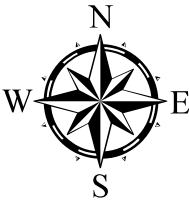
IN COOPERATION WITH
U.S. DEPARTMENT OF TRANSPORTATION
FEDERAL HIGHWAY ADMINISTRATION



1 in = 400 ft

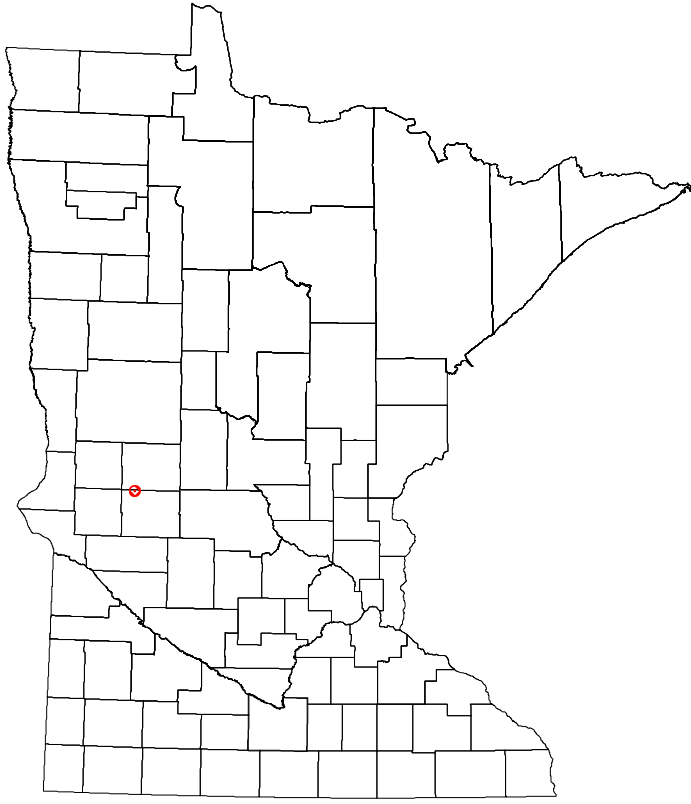
2024

Projection:
Transverse Mercator
NAD 1986
UTM Zone 15

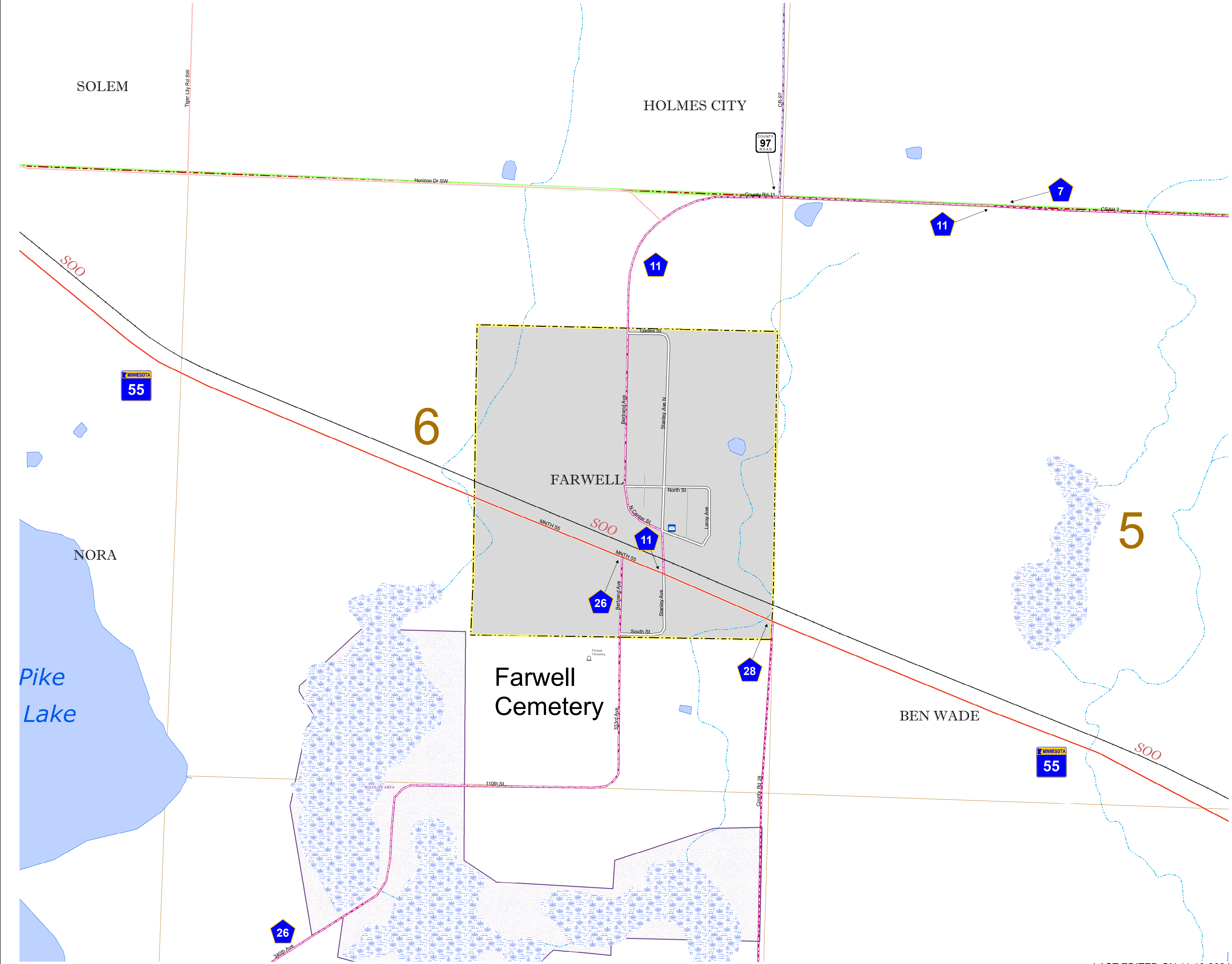


North American Datum
of 1986

ROAD AND ROADWAY FEATURES		PUBLIC SERVICE FEATURES	
INTERSTATE		MINDOT OFFICE	
US HIGHWAY		MINDOT TRUCK STATION	
MIN HIGHWAY		HIGHWAY PATROL DISTRICT OFFICE	
COUNTY STATE AID HIGHWAY		STATE TRAVEL INFORMATION CENTER	
COUNTY ROAD		REST AREA (FULL SERVICE)	
MUNICIPAL STREET		REST AREA (SNACK TRUCK)	
MUNICIPAL STATE AID STREET		WAYSIDE (SNACK OR PAY TRUCK)	
PRIVATE STREET/ROAD		PUBLIC ACCESS POINT	
TOWNSHIP ROAD		LOCAL PARK	
UNORGANIZED TERRITORY ROAD		FAIRGROUNDS	
RAMP OR CONNECTOR		PORT OF ENTRY	
INTERSTATE EXIT		PARK AND RIDE LOT	
GREAT RIVER ROAD		PUBLIC UNIVERSITY/COLLEGE	
OTHER ROADS		PRIVATE UNIVERSITY/COLLEGE	
FARMROAD		ELEMENTARY SCHOOL	
STATE PARK		MIDDLE SCHOOL	
NATIONAL PARK		HIGH SCHOOL	
NATIONAL MONUMENT			
STATE FOREST			
NATIONAL FOREST			
NATIONAL WILDLIFE STATE GAME			
RAILROAD AND RAILWAY FEATURES		AVIATION FEATURES	
RAILWAY		COMMERCIAL AIRPORT	
EMPIRE BUILDER STATION (AIRTRAIL)		GENERAL AIRPORT	
NORTHSTAR STATION (COMMUTER)		AIRSTRIP	
LIGHT RAIL		SEAPLANE	
BLUE LINE STATION		AIRPORT RUNWAY	
GREEN LINE STATION			
INFRASTRUCTURE FEATURES		CULTURAL FEATURES	
LONG BRIDGE (100' OR GREATER SPAN)		STATE HISTORICAL MARKER	
MAJOR BRIDGE (20' TO 100' SPAN)		HISTORIC DISTRICT	
MINOR BRIDGE (0' TO 20' SPAN)		HISTORIC SITE	
ROAD TUNNEL (100' OR GREATER SPAN)		MONUMENT	
RAILROAD BRIDGE (100' OR GREATER SPAN)		CEMETERY	
RAILROAD BRIDGE (UNDER 100' SPAN)			
SKYWAY		BOUNDARY FEATURES	
PEDESTRIAN BRIDGE		TRIBAL LAND	
PEDESTRIAN TUNNEL		COUNTY	
DAM		MUNICIPALITY	
LOCK AND DAM		ADJACENT MUNICIPALITY	
PUBLIC FACILITIES		FEDERAL ADJUSTED URBAN AREA (2014)	
STATE CAPITOL		MILITARY	
FEDERAL COURTHOUSE		STATE PARK	
COUNTY COURTHOUSE		REGIONAL PARK	
ARMORY		NATIONAL FOREST	
CITY HALL		NATIONAL AND STATE FOREST	
TOWN HALL		STATE FOREST	
COMMUNITY CENTER		NATIONAL TRAIL	
ARENA		WILDLIFE REFUGE AREA	
STADIUM		WILDLIFE MANAGEMENT AREA	
POST OFFICE		HYDROLOGIC FEATURES	
POLICE STATION		RIVER OR STREAM (PERMANENT)	
FIRE STATION		LAKE, POND OR RESERVOIR	
PUBLIC LIBRARY		STREAM (INTERMITTENT)	
PUBLIC MUSEUM		DRAINAGE DITCH	
EVENT CENTER		WETLAND	
CITY CENTERS		ISLAND OR LAND	
TRIBAL GOVERNMENT CENTER		REGIONAL WATERSHED	
CITY CENTER			
LOCALLY KNOWN PLACE			
UNINCORPORATED COMMUNITY			



Population (U.S. Census 2020): 56



To request information from this document in an alternative format, call 651-366-4718 or 1-800-657-3774 (Greater Minnesota); 711 or 1-800-627-3529 (Minnesota Relay). You may also send an e-mail to ADarequest.dot@state.mn.us. (Please request at least one week in advance.)

LAST EDITED ON 11-19-2024