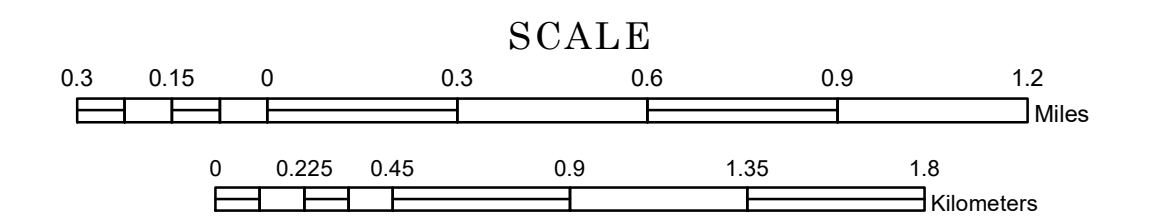


# MUNICIPALITY OF WADENA

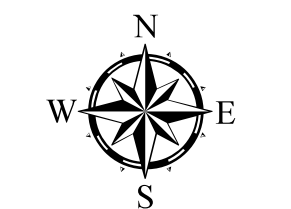
PREPARED BY THE  
MINNESOTA DEPARTMENT OF TRANSPORTATION  
OFFICE OF TRANSPORTATION SYSTEM MANAGEMENT

IN COOPERATION WITH  
U.S. DEPARTMENT OF TRANSPORTATION  
FEDERAL HIGHWAY ADMINISTRATION

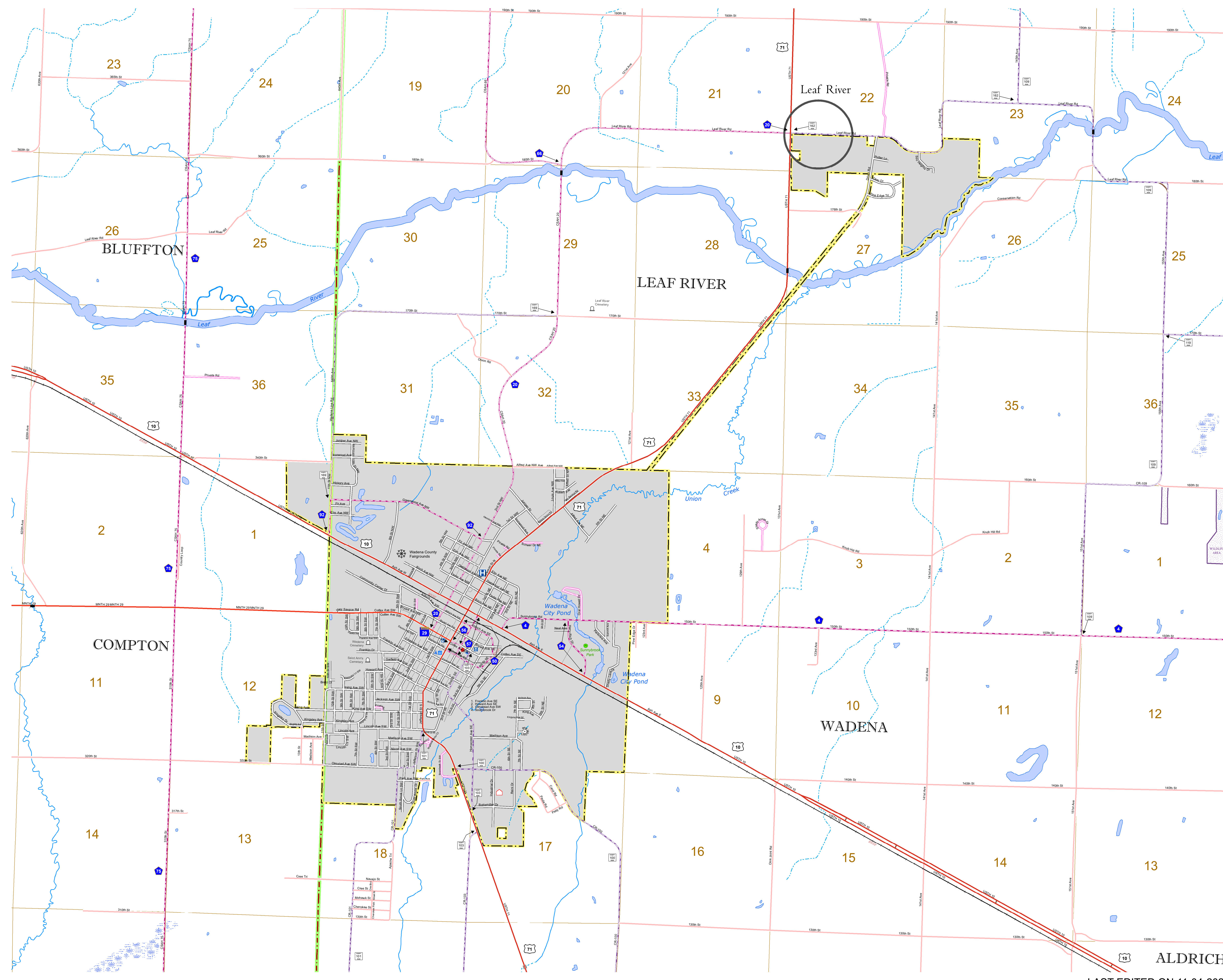


1 in = 1,600 ft  
**2024**

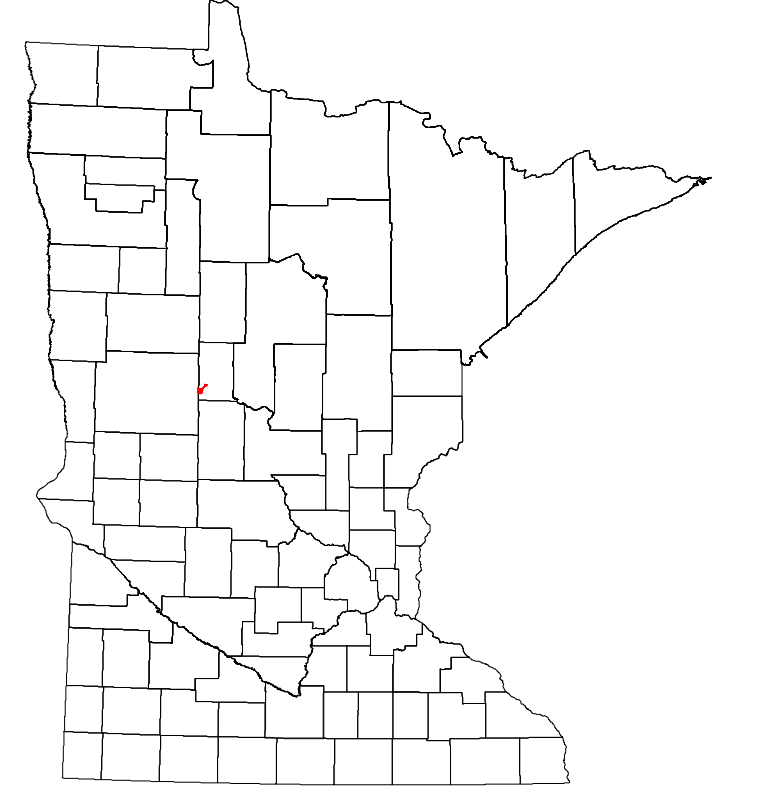
Projection:  
Transverse Mercator  
NAD 1986  
UTM Zone 15



North American Datum  
of 1986



ROAD AND ROADWAY FEATURES	PUBLIC SERVICE FEATURES
INTERSTATE	MINOT OFFICE
US HIGHWAY	MINOT TRUCK STATION
MN HIGHWAY	HIGHWAY PATROL DISTRICT OFFICE
COUNTY STATE AID HIGHWAY	STATE TRAVEL INFORMATION CENTER
COUNTY ROAD	REST AREA (FULL SERVICE)
MUNICIPAL STREET	REST AREA (VAULT TRAILS)
MUNICIPAL STATE AID STREET	WAYSIDE (VAULT OR PIT TOLLS)
PRIVATE STREET/ROAD	PUBLIC ACCESS POINT
TOWNSHIP ROAD	LOCAL PARK
UNORGANIZED TERRITORY ROAD	FAIRGROUNDS
RAMP OR CONNECTOR	PORT OF ENTRY
INTERSTATE EXIT	PARK AND RIDE LOT
GREAT RIVER ROAD	PUBLIC UNIVERSITY/COLLEGE
OTHER ROAD	PRIVATE UNIVERSITY/COLLEGE
Freight	NATIONAL FOREST
Rural Service	NATIONAL FOREST
Military	NATIONAL WILDLIFE SHOTS GAME
RAILROAD AND RAILWAY FEATURES	AVIATION FEATURES
RAILWAY	COMMERCIAL AIRPORT
EMPIRE BUILDER STATION (AMTRAK)	GENERAL AIRPORT
NORTHSTAR STATION (COMMUTER)	AIRSTRIP
LIGHT RAIL	SEAPLANE
BLUE LINE STATION	AIRPORT RUNWAY
GREEN LINE STATION	CULTURAL FEATURES
INFRASTRUCTURE FEATURES	STATE HISTORICAL MARKER
LONG BRIDGE (100' OR GREATER SPAN)	HISTORIC DISTRICT
MAJOR BRIDGE (20' TO 100' SPAN)	HISTORIC SITE
MINOR BRIDGE (5' TO 20' SPAN)	MONUMENT
ROAD TUNNEL (100' OR GREATER SPAN)	CEMETERY
RAILROAD BRIDGE (100' OR GREATER SPAN)	BOUNDARY FEATURES
RAILROAD BRIDGE (UNDER 100' SPAN)	TRIBAL LAND
SKYWAY	COUNTY
PEDESTRIAN BRIDGE	MUNICIPALITY
PEDESTRIAN TUNNEL	ADJACENT MUNICIPALITY
DAM	FEDERAL ADJUSTED URBAN AREA (2014)
LOCK AND DAM	MILITARY
PUBLIC FACILITIES	STATE PARK
FEDERAL CAPITOL	REGIONAL PARK
FEDERAL COURTHOUSE	NATIONAL FOREST
COUNTY COURTHOUSE	NATIONAL AND STATE FOREST
ARMORY	STATE FOREST
CITY HALL	NATIONAL TRAIL
TOWN HALL	STATE TRAIL
COMMUNITY CENTER	NATIONAL TRAIL
ARENA	WILDLIFE REFUGUE AREA
STADIUM	WILDLIFE MANAGEMENT AREA
POST OFFICE	HYDROLOGIC FEATURES
POLICE STATION	RIVER OR STREAM (PERENNIAL)
FIRE STATION	LAKE, POND OR RESERVOIR
PUBLIC LIBRARY	STREAM (NONPERENNIAL)
PUBLIC MUSEUM	DRAINAGE DITCH
EVENT CENTER	WETLAND
CITY CENTERS	ISLAND OR LAND
TRIBAL GOVERNMENT CENTER	LOCALLY KNOWN PLACE
	UNINCORPORATED COMMUNITY
	REGIONAL WATERSHED



Population (U.S. Census 2020): 4,325

To request information from this document in an alternative format, call 651-366-4718 or 1-800-657-3774 (Greater Minnesota); 711 or 1-800-627-3529 (Minnesota Relay). You may also send an e-mail to ADRequest.dot@state.mn.us. (Please request at least one week in advance.)

LAST EDITED ON 11-04-2024