

# TOWNSHIP OF BALSAM

PREPARED BY THE  
MINNESOTA DEPARTMENT OF TRANSPORTATION  
OFFICE OF TRANSPORTATION SYSTEM MANAGEMENT

IN COOPERATION WITH  
U.S. DEPARTMENT OF TRANSPORTATION  
FEDERAL HIGHWAY ADMINISTRATION



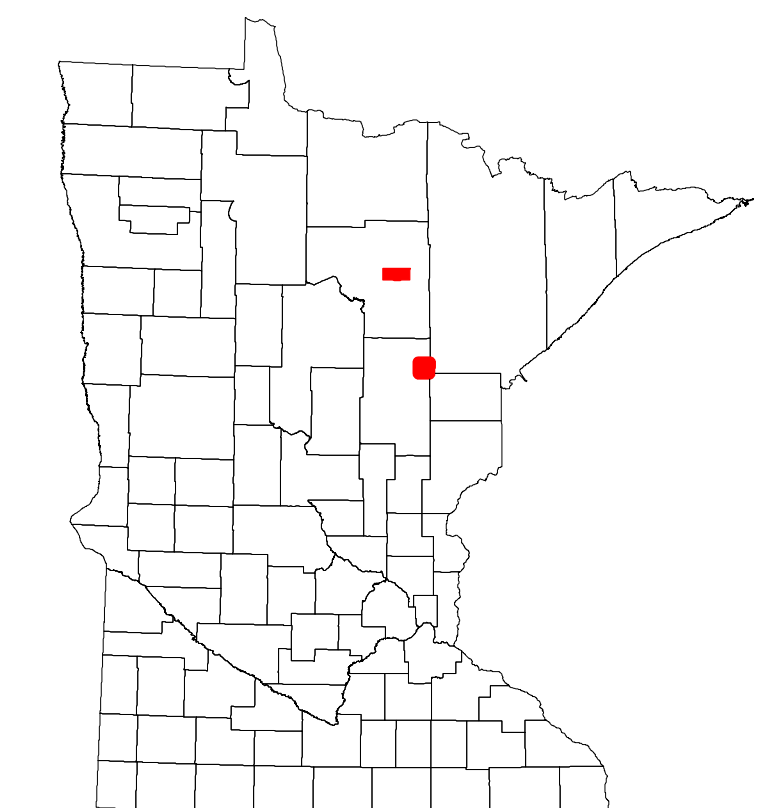
2023

Projection:  
Transverse Mercator  
NAD 1986  
UTM Zone 15

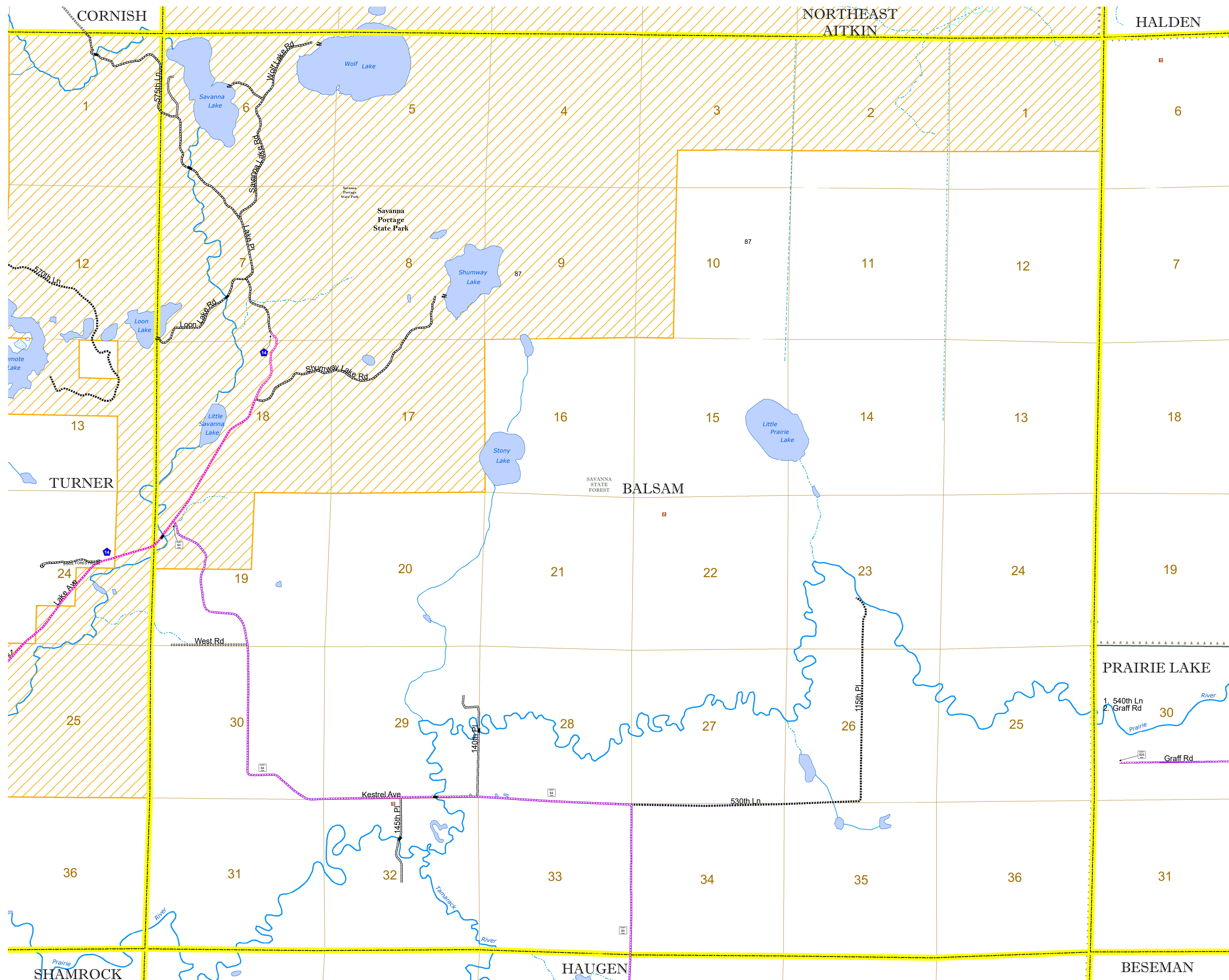


North American Datum  
of 1986

ROAD AND ROADWAY FEATURES		RAILROAD AND RAILWAY FEATURES		AVIATION FEATURES	
INTERSTATE		CONCRETE		COMMERCIAL AIRPORT	
US HIGHWAY		BITUMINOUS		GENERAL AIRPORT	
MN HIGHWAY		GRAVEL		AIRSTRIP	
COUNTY STATE AID HIGHWAY		DIRT/UNIMPROVED		SEAPLANE	
COUNTY ROAD		OTHER		AIRPORT RUNWAY	
TOWNSHIP ROAD		UNKNOWN			
UNORGANIZED TERRITORY ROAD					
OTHER ROADS		RAMP OR CONNECTOR			
MUNICIPAL		INTERSTATE EXIT			
PRIVATE					
NATIONAL MONUMENT					
STATE FOREST					
NATIONAL SERVICE					
NATIONAL PARK					
NATIONAL WILDLIFE					
STATE GAME					
STATE PARK					
PRESERVE					
INFRASTRUCTURE FEATURES		BOUNDARY FEATURES			
LONG BRIDGE (200' OR GREATER SPAN)		TRIBAL LAND			
MAJOR BRIDGE (20' TO 200' SPAN)		STATE OF MINNESOTA			
MINOR BRIDGE (5' TO 20' SPAN)		COUNTY			
DAM		MUNICIPALITY			
LOCK AND DAM		UNORGANIZED TERRITORY			
		FEDERAL ADJUSTED URBAN AREA (2014)			
		CIVIL TOWNSHIP			
		CONGRESSIONAL TOWNSHIP			
		SECTION			
		MILITARY			
		VOYAGEURS NATIONAL PARK			
		BOUNDARY WATERS CANOE AREA WILDERNESS			
		STATE PARK			
		REGIONAL PARK			
		NATIONAL FOREST			
		NATIONAL AND STATE FOREST			
		STATE FOREST			
		NATIONAL TRAIL			
		WILDLIFE REFUGUE AREA			
		WILDLIFE MANAGEMENT AREA			
		HYDROLOGIC FEATURES			
		RIVER OR STREAM (PERMANENT)			
		LAKE, POND OR RESERVOIR			
		STREAM (INTERMITTENT)			
		DRAINAGE DITCH			
		WETLAND			
		ISLAND OR LAND			
		REGIONAL WATERSHED			



Population (U.S. Census 2010): 42



To request information from this document in an alternative format, call 651-366-4718 or 1-800-657-3774 (Greater Minnesota); 711 or 1-800-627-3529 (Minnesota Relay). You may also send an e-mail to ADArequest.dot@state.mn.us. (Please request at least one week in advance.)