

# TOWNSHIP OF LAKESIDE

PREPARED BY THE  
MINNESOTA DEPARTMENT OF TRANSPORTATION  
OFFICE OF TRANSPORTATION SYSTEM MANAGEMENT

IN COOPERATION WITH  
U.S. DEPARTMENT OF TRANSPORTATION  
FEDERAL HIGHWAY ADMINISTRATION



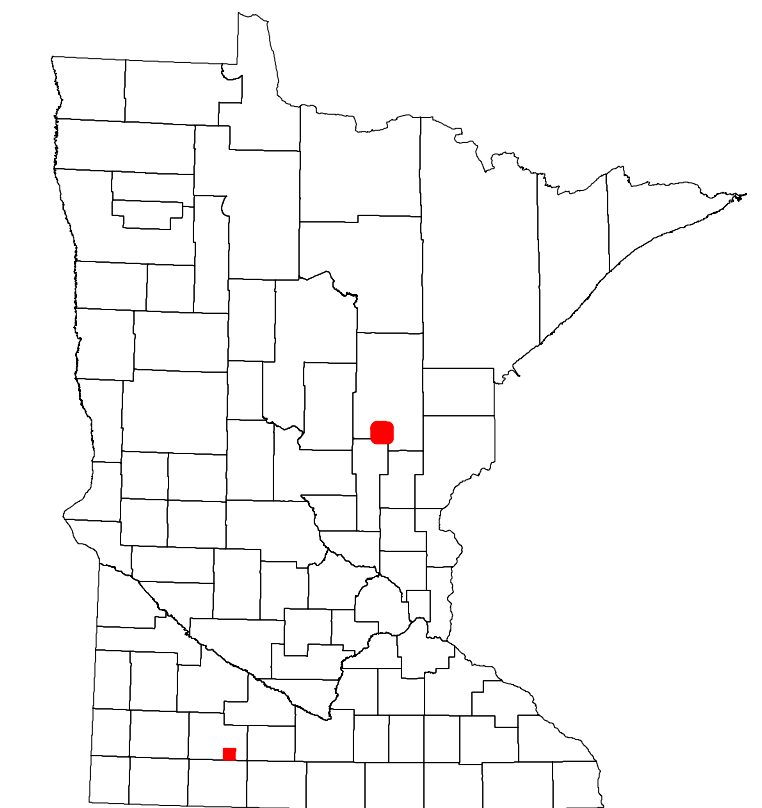
2023

Projection:  
Transverse Mercator  
NAD 1986  
UTM Zone 15

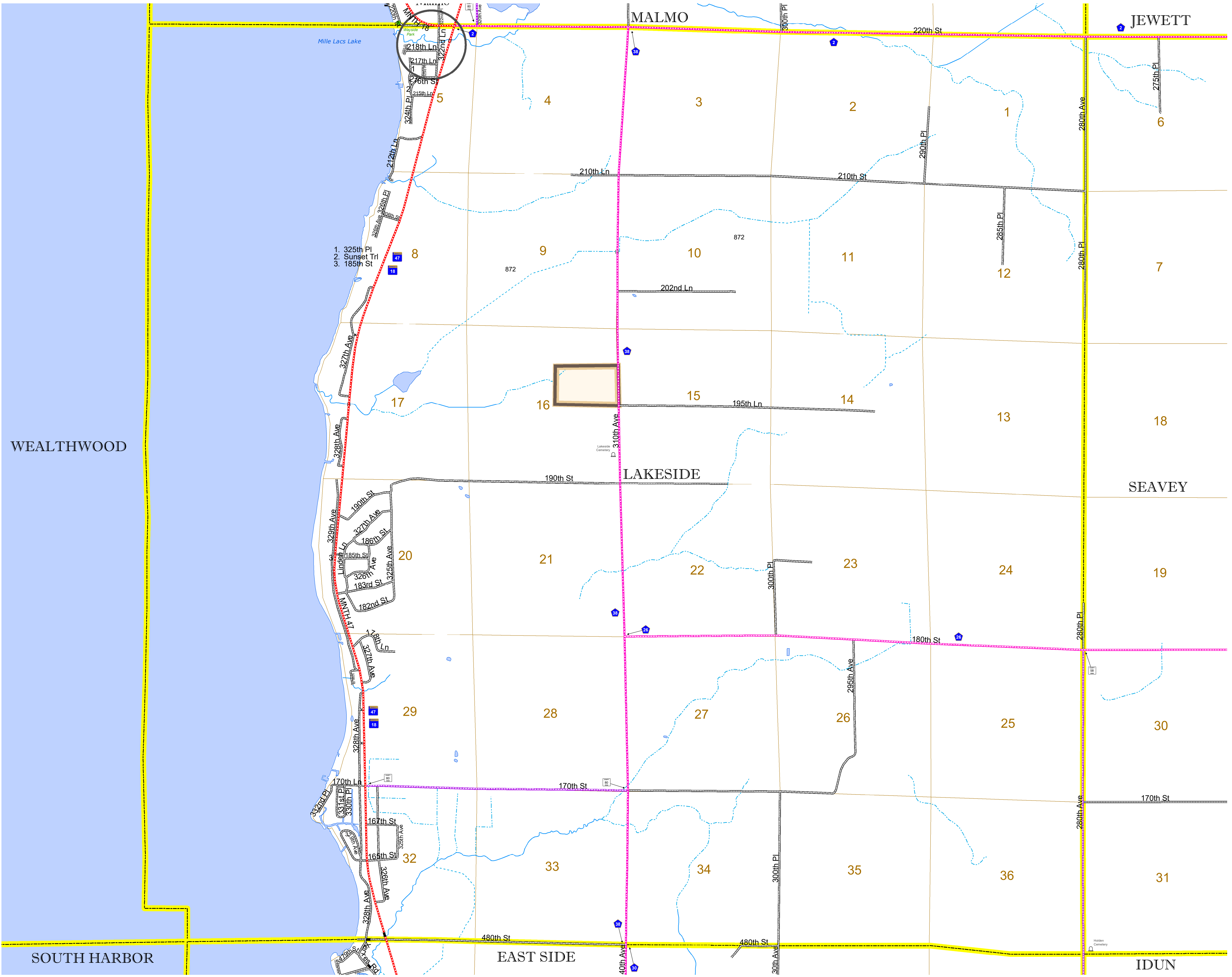


North American Datum  
of 1986

| ROAD AND ROADWAY FEATURES  |                   | AVIATION FEATURES  |                                       |
|----------------------------|-------------------|--------------------|---------------------------------------|
| INTERSTATE                 | CONCRETE          | COMMERCIAL AIRPORT | TRIBAL LAND                           |
| US HIGHWAY                 | BITUMINOUS        | GENERAL AIRPORT    | STATE OF MINNESOTA                    |
| MN HIGHWAY                 | GRAVEL            | AIRSTRIP           | COUNTY                                |
| COUNTY STATE AID HIGHWAY   | DIRT/UNIMPROVED   | SEAPLANE           | MUNICIPALITY                          |
| COUNTY ROAD                | OTHER             | AIRPORT RUNWAY     | UNORGANIZED TERRITORY                 |
| TOWNSHIP ROAD              | UNKNOWN           |                    | FEDERAL ADJUSTED URBAN AREA (2014)    |
| UNORGANIZED TERRITORY ROAD |                   |                    | CIVIL TOWNSHIP                        |
| OTHER ROADS                |                   |                    | CONGRESSIONAL TOWNSHIP                |
| Municipal                  | RAMP OR CONNECTOR |                    | SECTION                               |
| Private                    | INTERSTATE EXIT   |                    | MILITARY                              |
| National Monument          | GREAT RIVER ROAD  |                    | VOYAGEURS NATIONAL PARK               |
| National Park              |                   |                    | BOUNDARY WATERS CANOE AREA WILDERNESS |
| National Wildlife Refuge   |                   |                    | STATE PARK                            |
| State Park                 |                   |                    | REGIONAL PARK                         |
| Preserve                   |                   |                    | NATIONAL FOREST                       |
|                            |                   |                    | NATIONAL AND STATE FOREST             |
|                            |                   |                    | STATE FOREST                          |
|                            |                   |                    | NATIONAL TRAIL                        |
|                            |                   |                    | WILDLIFE REFUGUE AREA                 |
|                            |                   |                    | WILDLIFE MANAGEMENT AREA              |
|                            |                   |                    | HYDROLOGIC FEATURES                   |
|                            |                   |                    | RIVER OR STREAM (PERENNIAL)           |
|                            |                   |                    | LAKE, POND OR RESERVOIR               |
|                            |                   |                    | STREAM (INTERMITTENT)                 |
|                            |                   |                    | DRAINAGE DITCH                        |
|                            |                   |                    | WETLAND                               |
|                            |                   |                    | ISLAND OR LAND                        |
|                            |                   |                    | REGIONAL WATERSHED                    |



Population (U.S. Census 2010): 463



To request information from this document in an alternative format, call 651-366-4718 or 1-800-657-3774 (Greater Minnesota); 711 or 1-800-627-3529 (Minnesota Relay). You may also send an e-mail to ADarequest.dot@state.mn.us. (Please request at least one week in advance.)