

MCGREGOR

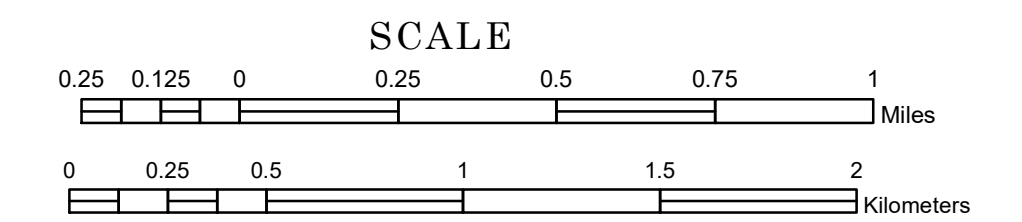
CLARK

LAKEVIEW

TOWNSHIP OF SALO

PREPARED BY THE
MINNESOTA DEPARTMENT OF TRANSPORTATION
OFFICE OF TRANSPORTATION SYSTEM MANAGEMENT

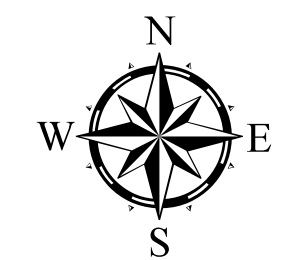
IN COOPERATION WITH
U.S. DEPARTMENT OF TRANSPORTATION
FEDERAL HIGHWAY ADMINISTRATION



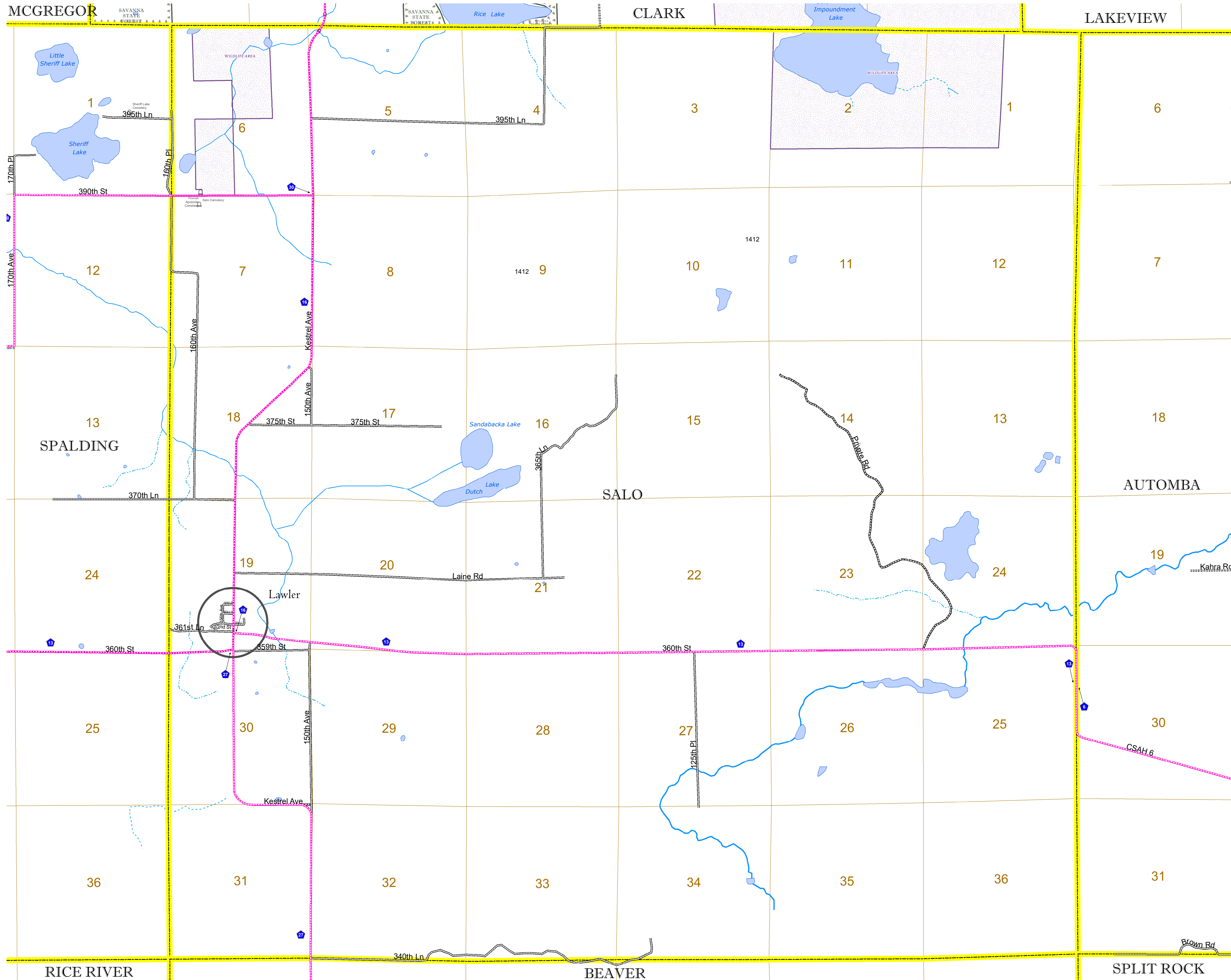
1 in = 1,600 ft

2023

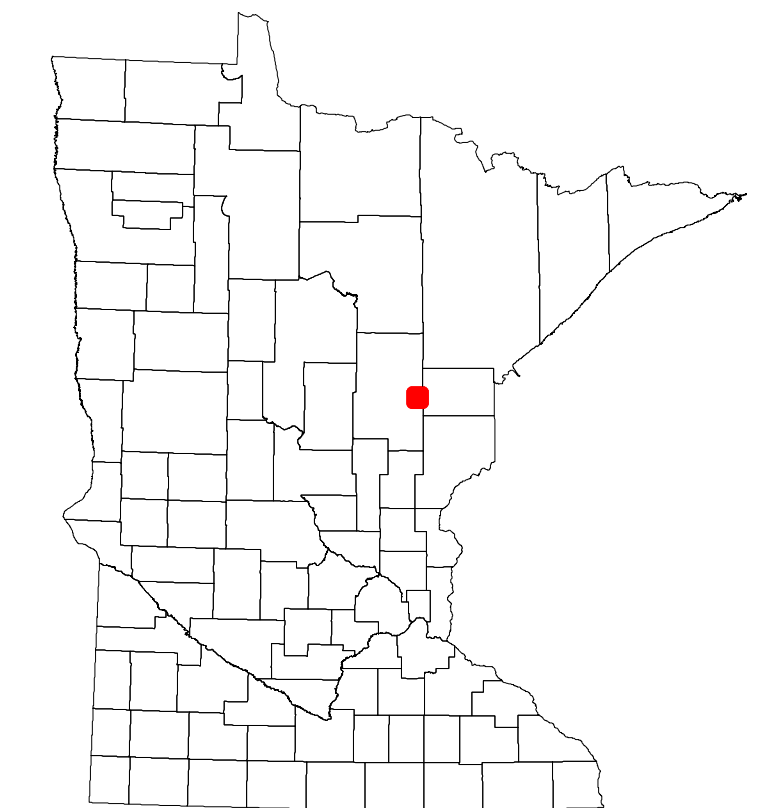
Projection:
Transverse Mercator
NAD 1986
UTM Zone 15



North American Datum
of 1986



ROAD AND ROADWAY FEATURES	AVIATION FEATURES
INTERSTATE	COMMERCIAL AIRPORT
US HIGHWAY	GENERAL AIRPORT
MN HIGHWAY	AIRSTRIP
COUNTY STATE AID HIGHWAY	SEAPLANE
COUNTY ROAD	AIRPORT RUNWAY
TOWNSHIP ROAD	
UNORGANIZED TERRITORY ROAD	
OTHER ROADS	
Municipal	
Private	
National Monument	
State Forest	
Nature Service	
National Park	
National Wildlife	
State Game	
National Forest	
State Park	
Preserve	
RAILROAD AND RAILWAY FEATURES	
EMPIRE BUILDER STATION (AMTRAK)	
NORTHSTAR STATION (COMMUTER)	
LIGHT RAIL	
BLUE LINE	
GREEN LINE	
INFRASTRUCTURE FEATURES	
LONG BRIDGE (200' OR GREATER SPAN)	
MAJOR BRIDGE (20' TO 200' SPAN)	
MINOR BRIDGE (5' TO 20' SPAN)	
DAM	
LOCK AND DAM	
CITY CENTERS	
STATE CAPITAL	
COUNTY SEAT	
CITY CENTER	
UNINCORPORATED COMMUNITY	
PUBLIC SERVICE FEATURES	
MNDOT OFFICE	
MNDOT TRUCK STATION	
HIGHWAY PATROL DISTRICT OFFICE	
STATE TRAVEL INFORMATION CENTER	
REST AREA (FULL SERVICE)	
REST AREA (VAULT TOILET)	
WAYSIDE (VAULT OR PITY TOILET)	
PARK AND RIDE LOT	
PORT OF ENTRY	
PUBLIC ACCESS POINT	
MN STATE COLLEGE AND UNIVERSITY SYSTEM (MNSCU)	
UNIVERSITY OF MN SYSTEM	
FAIRGROUNDS	
CULTURAL FEATURES	
STATE HISTORICAL MARKER	
HISTORIC DISTRICT	
HISTORIC SITE	
MONUMENT	
CONCRETE	
BITUMINOUS	
GRAVEL	
DIRT/UNIMPROVED	
OTHER	
UNKNOWN	
RAMP OR CONNECTOR	
INTERSTATE EXIT	
GREAT RIVER ROAD	
BOUNDARY FEATURES	
TRIBAL LAND	
STATE OF MINNESOTA	
COUNTY	
MUNICIPALITY	
UNORGANIZED TERRITORY	
FEDERAL ADJUSTED URBAN AREA (2014)	
CIVIL TOWNSHIP	
CONGRESSIONAL TOWNSHIP	
SECTION	
MILITARY	
VOYAGEURS NATIONAL PARK	
BOUNDARY WATERS CANOE AREA WILDERNESS	
STATE PARK	
REGIONAL PARK	
NATIONAL FOREST	
NATIONAL AND STATE FOREST	
STATE FOREST	
NATIONAL TRAIL	
WILDLIFE REFUGUE AREA	
WILDLIFE MANAGEMENT AREA	
HYDROLOGIC FEATURES	
RIVER OR STREAM (PERENNIAL)	
LAKE, POND OR RESERVOIR	
STREAM (INTERMITTENT)	
DRAINAGE DITCH	
WETLAND	
ISLAND OR LAND	
REGIONAL WATERSHED	



Population (U.S. Census 2010): 102

To request information from this document in an alternative format, call 651-366-4718 or 1-800-657-3774 (Greater Minnesota); 711 or 1-800-627-3529 (Minnesota Relay). You may also send an e-mail to ADARquest.dot@state.mn.us. (Please request at least one week in advance.)