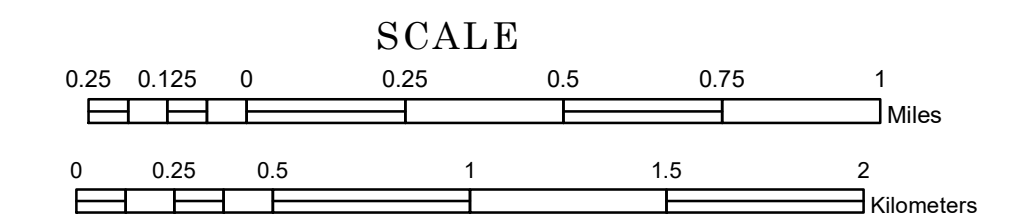


TOWNSHIP OF SILVER LEAF

PREPARED BY THE
MINNESOTA DEPARTMENT OF TRANSPORTATION
OFFICE OF TRANSPORTATION SYSTEM MANAGEMENT

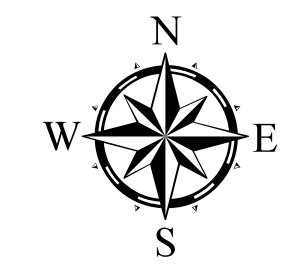
IN COOPERATION WITH
U.S. DEPARTMENT OF TRANSPORTATION
FEDERAL HIGHWAY ADMINISTRATION



1 in = 1,600 ft

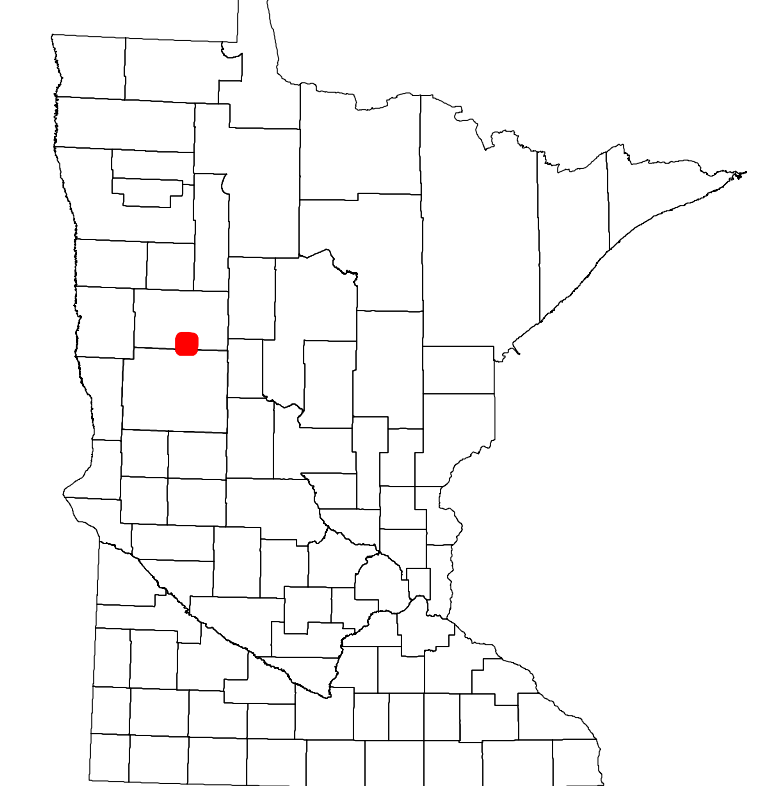
2024

Projection:
Transverse Mercator
NAD 1986
UTM Zone 15

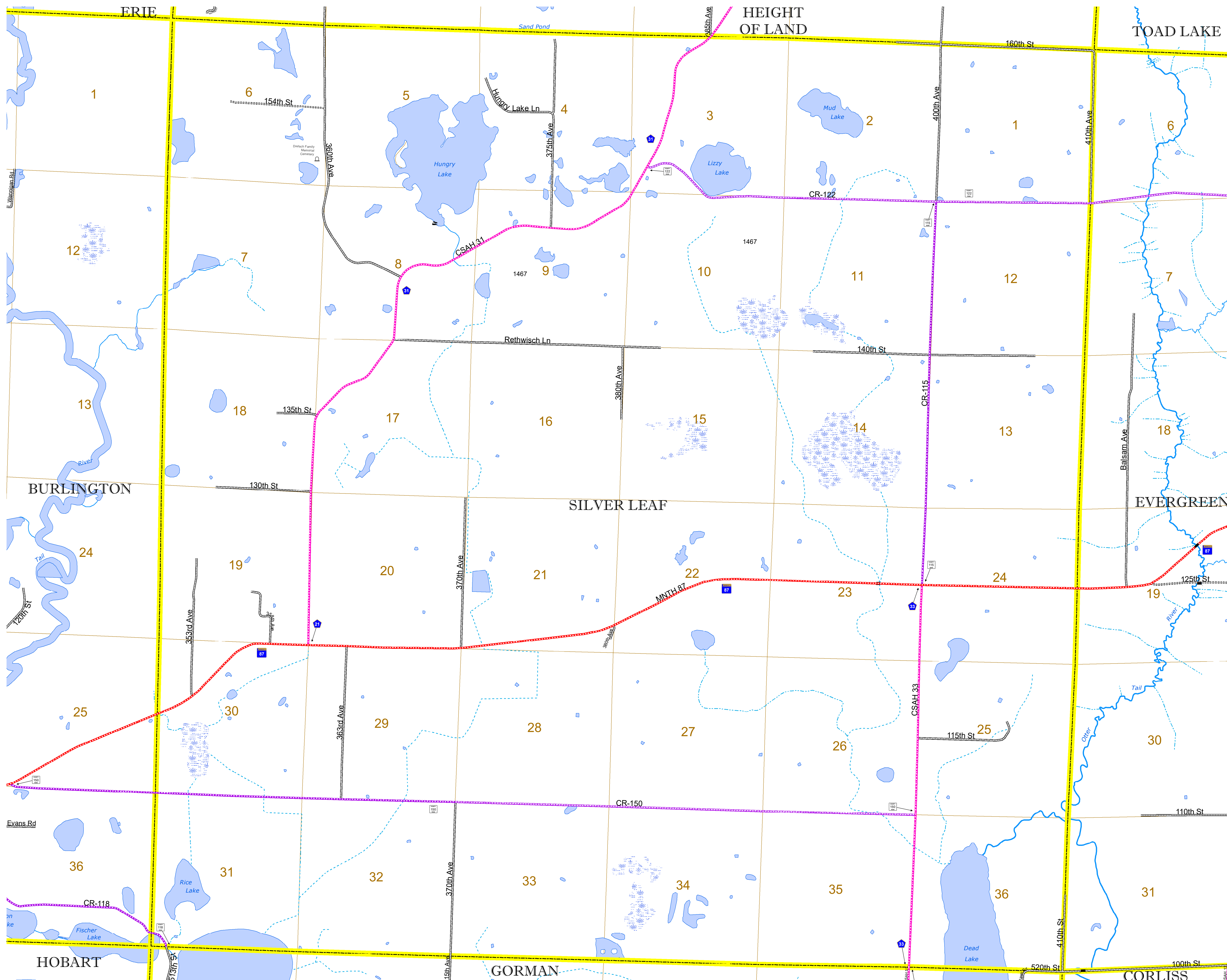


North American Datum
of 1986

| | | |
|---------------------------------------|---------------------------------------|---------------------------------------|
| INTERSTATE | ROAD AND ROADWAY FEATURES | CONCRETE |
| US HIGHWAY | GRAVEL | BITUMINOUS |
| MN HIGHWAY | DIRT/UNIMPROVED | GRAVEL |
| COUNTY STATE AID HIGHWAY | OTHER | DIRT/UNIMPROVED |
| COUNTY ROAD | UNKNOWN | OTHER |
| TOWNSHIP ROAD | UNORGANIZED TERRITORY ROAD | UNKNOWN |
| UNORGANIZED TERRITORY ROAD | OTHER ROADS | RAMP OR CONNECTOR |
| OTHER ROADS | Municipal | Municipal |
| Municipal | Private | Private |
| Private | National Monument | State Forest |
| National Monument | National Park | National Wildlife |
| National Park | National Wildlife | State Park |
| National Wildlife | State Park | Passive |
| State Park | Passive | |
| Passive | RAILROAD AND RAILWAY FEATURES | AVIATION FEATURES |
| RAILROAD AND RAILWAY FEATURES | COMMERCIAL AIRPORT | COMMERCIAL AIRPORT |
| COMMERCIAL AIRPORT | GENERAL AIRPORT | GENERAL AIRPORT |
| GENERAL AIRPORT | AIRSTRIP | AIRSTRIP |
| AIRSTRIP | SEAPLANE | SEAPLANE |
| SEAPLANE | AIRPORT RUNWAY | AIRPORT RUNWAY |
| AIRPORT RUNWAY | BOUNDARY FEATURES | BOUNDARY FEATURES |
| BOUNDARY FEATURES | TRIBAL LAND | TRIBAL LAND |
| TRIBAL LAND | STATE OF MINNESOTA | STATE OF MINNESOTA |
| STATE OF MINNESOTA | COUNTY | COUNTY |
| COUNTY | MUNICIPALITY | MUNICIPALITY |
| MUNICIPALITY | UNORGANIZED TERRITORY | UNORGANIZED TERRITORY |
| UNORGANIZED TERRITORY | FEDERAL ADJUSTED URBAN AREA (2014) | FEDERAL ADJUSTED URBAN AREA (2014) |
| FEDERAL ADJUSTED URBAN AREA (2014) | CIVIL TOWNSHIP | CIVIL TOWNSHIP |
| CIVIL TOWNSHIP | CONGRESSIONAL TOWNSHIP | CONGRESSIONAL TOWNSHIP |
| CONGRESSIONAL TOWNSHIP | SECTION | SECTION |
| SECTION | MILITARY | MILITARY |
| MILITARY | VOYAGEURS NATIONAL PARK | VOYAGEURS NATIONAL PARK |
| VOYAGEURS NATIONAL PARK | BOUNDARY WATERS CANOE AREA WILDERNESS | BOUNDARY WATERS CANOE AREA WILDERNESS |
| BOUNDARY WATERS CANOE AREA WILDERNESS | STATE PARK | STATE PARK |
| STATE PARK | REGIONAL PARK | REGIONAL PARK |
| REGIONAL PARK | NATIONAL FOREST | NATIONAL FOREST |
| NATIONAL FOREST | NATIONAL AND STATE FOREST | NATIONAL AND STATE FOREST |
| NATIONAL AND STATE FOREST | STATE FOREST | STATE FOREST |
| STATE FOREST | NATIONAL TRAIL | NATIONAL TRAIL |
| NATIONAL TRAIL | WILDLIFE REFUGUE AREA | WILDLIFE REFUGUE AREA |
| WILDLIFE REFUGUE AREA | WILDLIFE MANAGEMENT AREA | WILDLIFE MANAGEMENT AREA |
| WILDLIFE MANAGEMENT AREA | HYDROLOGIC FEATURES | HYDROLOGIC FEATURES |
| HYDROLOGIC FEATURES | RIVER OR STREAM (PERENNIAL) | RIVER OR STREAM (PERENNIAL) |
| RIVER OR STREAM (PERENNIAL) | LAKE, POND OR RESERVOIR | LAKE, POND OR RESERVOIR |
| LAKE, POND OR RESERVOIR | STREAM (INTERMITTENT) | STREAM (INTERMITTENT) |
| STREAM (INTERMITTENT) | DRAINAGE DITCH | DRAINAGE DITCH |
| DRAINAGE DITCH | WETLAND | WETLAND |
| WETLAND | ISLAND OR LAND | ISLAND OR LAND |
| ISLAND OR LAND | REGIONAL WATERSHED | REGIONAL WATERSHED |
| REGIONAL WATERSHED | | |



Population (U.S. Census 2010): 534



To request information from this document in an alternative format, call 651-366-4718 or 1-800-657-3774 (Greater Minnesota); 711 or 1-800-627-3529 (Minnesota Relay). You may also send an e-mail to ADRequest.dot@state.mn.us. (Please request at least one week in advance.)