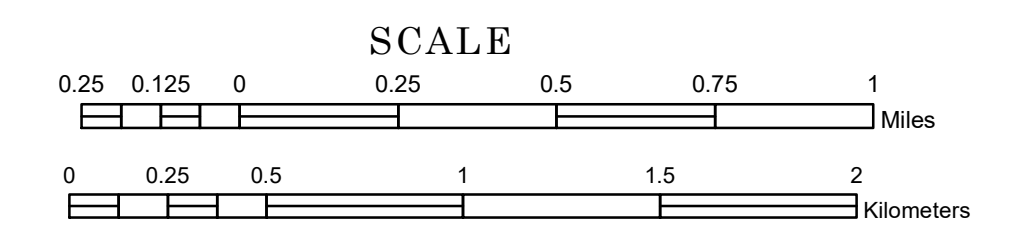


TOWNSHIP OF TWO INLETS

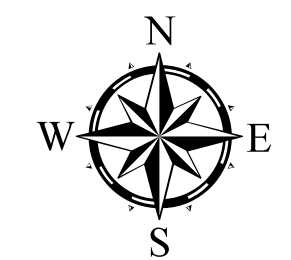
PREPARED BY THE
MINNESOTA DEPARTMENT OF TRANSPORTATION
OFFICE OF TRANSPORTATION SYSTEM MANAGEMENT

IN COOPERATION WITH
U.S. DEPARTMENT OF TRANSPORTATION
FEDERAL HIGHWAY ADMINISTRATION

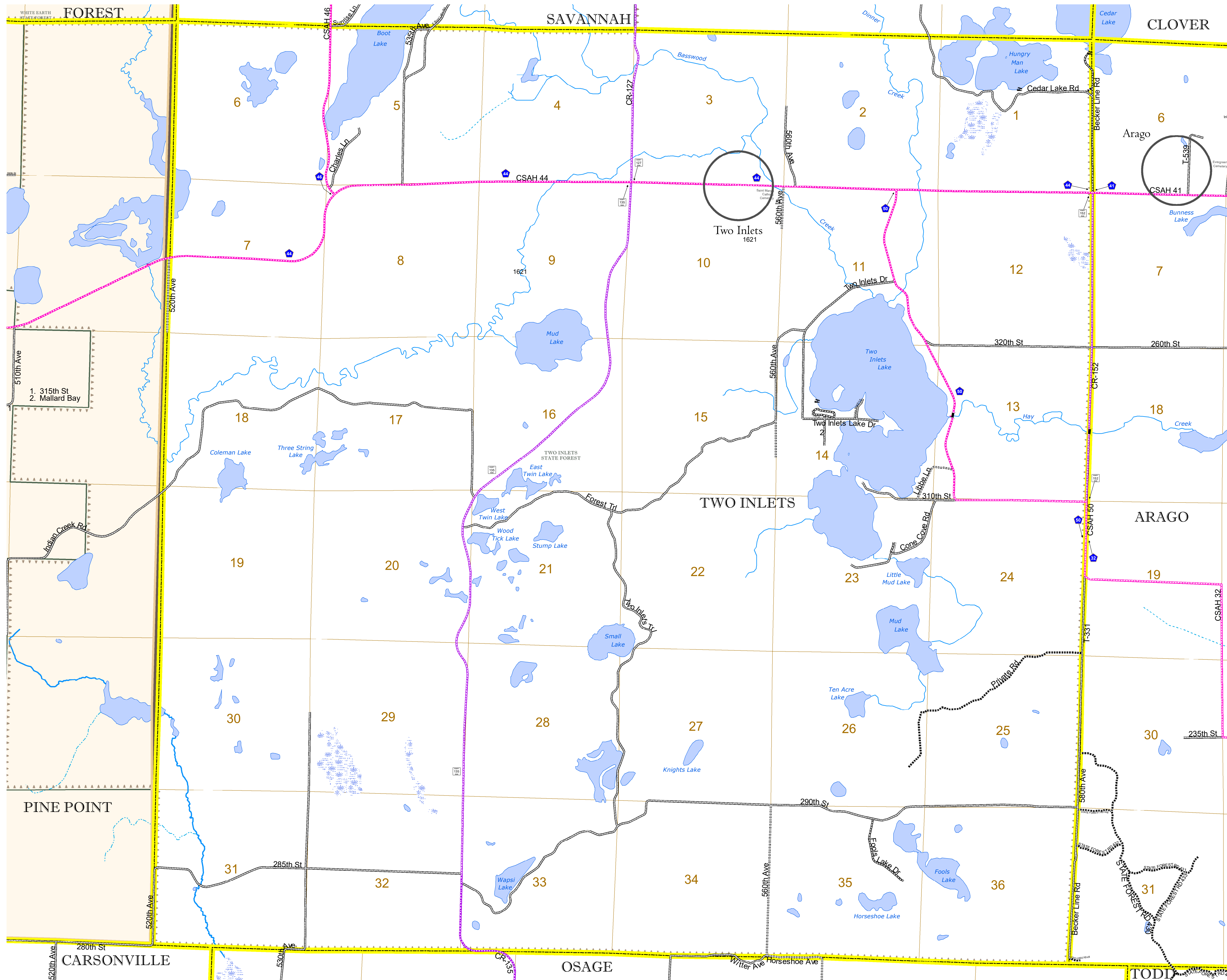


2024

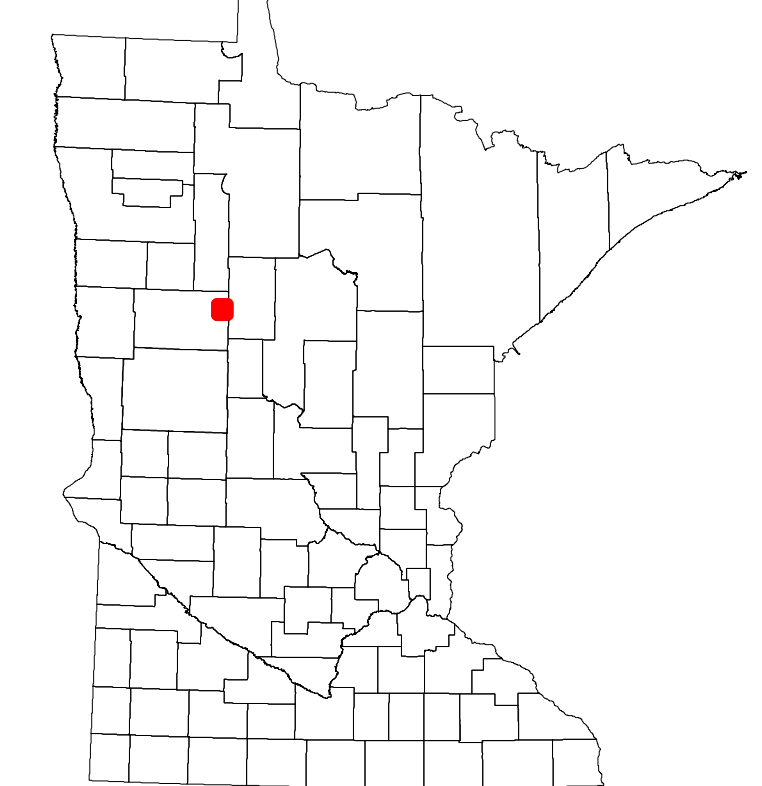
Projection:
Transverse Mercator
NAD 1986
UTM Zone 15



North American Datum
of 1986



ROAD AND ROADWAY FEATURES	
INTERSTATE	CONCRETE
US HIGHWAY	BITUMINOUS
MN HIGHWAY	GRAVEL
COUNTY STATE AID HIGHWAY	DIRT/UNIMPROVED
COUNTY ROAD	OTHER
TOWNSHIP ROAD	UNKNOWN
UNORGANIZED TERRITORY ROAD	
OTHER ROADS	
Municipal	RAMP OR CONNECTOR
Private	INTERSTATE EXIT
National Monument	AVIATION FEATURES
National Wildlife	General Airport
State Park	Airstrip
Preserve	Seaplane
	Airport Runway
	BOUNDARY FEATURES
	Tribal Land
	State of Minnesota
	County
	Municipality
	Unorganized Territory
	Federal Adjusted Urban Area (2014)
	Civil Township
	Congressional Township
	Section
	Military
	Voyageurs National Park
	Boundary Waters Canoe Area Wilderness
	State Park
	Regional Park
	National Forest
	National and State Forest
	State Forest
	National Trail
	Wildlife Refuge Area
	Wildlife Management Area
	Hydrologic Features
	River or Stream (Perennial)
	Lake, Pond or Reservoir
	Stream (Intermittent)
	Drainage Ditch
	Wetland
	Island or Land
	Regional Watershed



Population (U.S. Census 2010): 213

To request information from this document in an alternative format, call 651-366-4718 or 1-800-657-3774 (Greater Minnesota); 711 or 1-800-627-3529 (Minnesota Relay). You may also send an e-mail to ADAREquest.dot@state.mn.us. (Please request at least one week in advance.)