

TOWNSHIP OF LAMMERS

PREPARED BY THE
MINNESOTA DEPARTMENT OF TRANSPORTATION
OFFICE OF TRANSPORTATION SYSTEM MANAGEMENT

IN COOPERATION WITH
U.S. DEPARTMENT OF TRANSPORTATION
FEDERAL HIGHWAY ADMINISTRATION



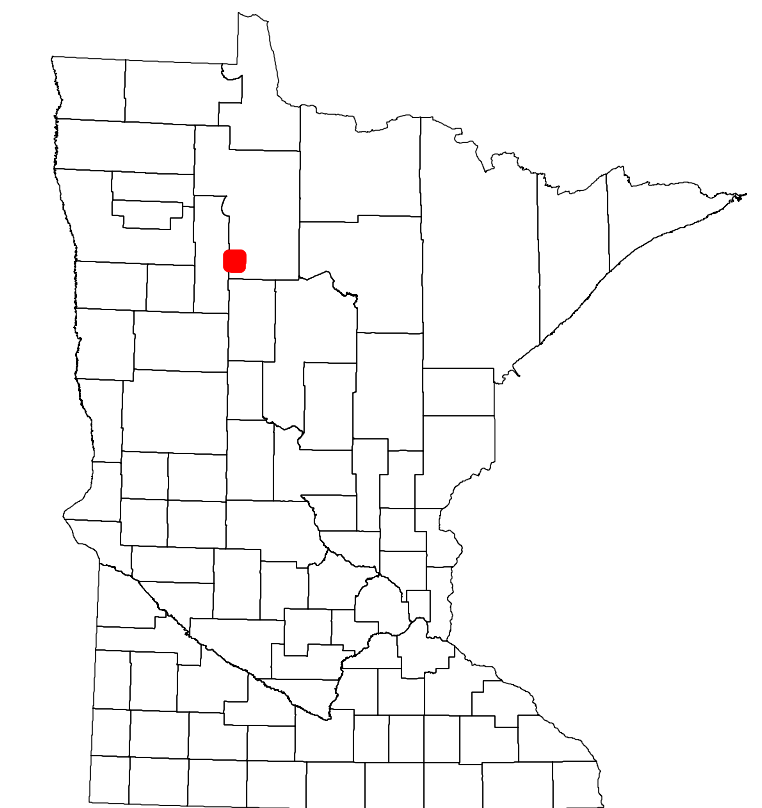
1 in = 1,600 ft
2023

Projection:
Transverse Mercator
NAD 1986
UTM Zone 15

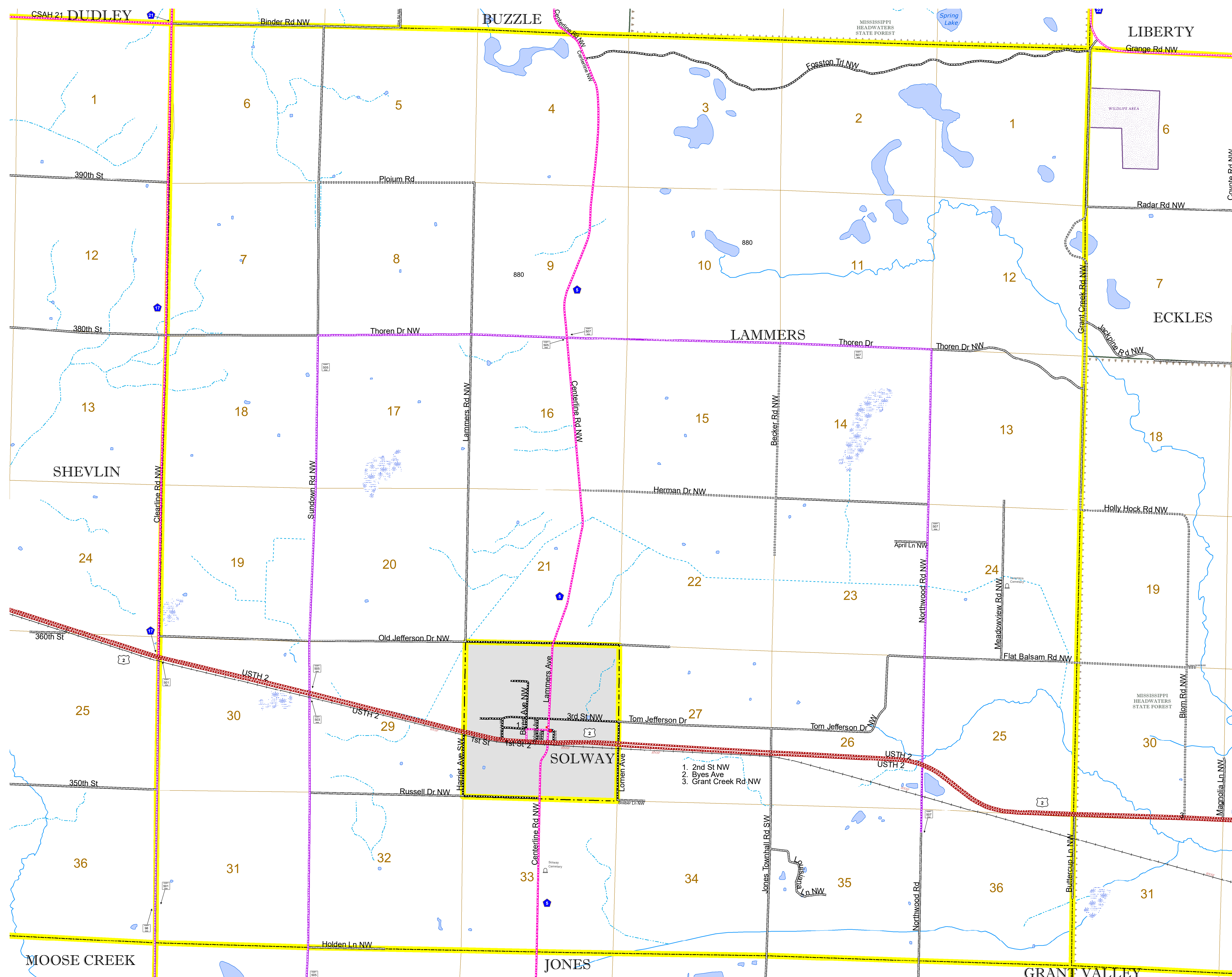


North American Datum
of 1986

ROAD AND ROADWAY FEATURES		AVIATION FEATURES	
INTERSTATE	CONCRETE	COMMERCIAL AIRPORT	GENERAL AIRPORT
US HIGHWAY	BITUMINOUS	NORTHSTAR STATION (COMMUTER)	AIRSTRIP
MN HIGHWAY	GRAVEL	SEAPLANE	AIRPORT RUNWAY
COUNTY STATE AID HIGHWAY	DIRT/UNIMPROVED	AVIATION FEATURES	
COUNTY ROAD	OTHER		
TOWNSHIP ROAD	UNKNOWN		
UNORGANIZED TERRITORY ROAD			
OTHER ROADS			
Municipal Private National Monument State Forest			
Nature Service National Park National Wildlife State Game			
Mulvan National Forest State Park Preserve			
RAILROAD AND RAILWAY FEATURES		BOUNDARY FEATURES	
EMPIRE BUILDER STATION (AMTRAK)	TRIBAL LAND	STATE OF MINNESOTA	COUNTY
NORTHSTAR STATION (COMMUTER)	STATE OF MINNESOTA	MUNICIPALITY	UNORGANIZED TERRITORY
LIGHT RAIL	STATE OF MINNESOTA	FEDERAL ADJUSTED URBAN AREA (2014)	CIVIL TOWNSHIP
BLUE LINE	STATE OF MINNESOTA	CONGRESSIONAL TOWNSHIP	SECTION
GREEN LINE	STATE OF MINNESOTA	MILITARY	VOYAGEURS NATIONAL PARK
INFRASTRUCTURE FEATURES		STATE OF MINNESOTA	BOUNDARY WATERS CANOE AREA WILDERNESS
LONG BRIDGE (200' OR GREATER SPAN)	STATE OF MINNESOTA	STATE PARK	REGIONAL PARK
MAJOR BRIDGE (20' TO 200' SPAN)	STATE OF MINNESOTA	NATIONAL FOREST	NATIONAL AND STATE FOREST
MINOR BRIDGE (5' TO 20' SPAN)	STATE OF MINNESOTA	STATE FOREST	WILDLIFE REFUGUE AREA
DAM	STATE OF MINNESOTA	NATIONAL TRAIL	WILDLIFE MANAGEMENT AREA
LOCK AND DAM	STATE OF MINNESOTA	WILDLIFE REFUGUE AREA	HYDROLOGIC FEATURES
CITY CENTERS		STATE OF MINNESOTA	RIVER OR STREAM (PERMANENT)
STATE CAPITAL	CITY CENTER	STATE OF MINNESOTA	LAKE, POND OR RESERVOIR
COUNTY SEAT	CITY CENTER	STATE OF MINNESOTA	STREAM (INTERMITTENT)
CITY CENTER	UNINCORPORATED COMMUNITY	STATE OF MINNESOTA	DRAINAGE DITCH
PUBLIC SERVICE FEATURES		STATE OF MINNESOTA	WETLAND
MNDOT OFFICE	STATE OF MINNESOTA	STATE OF MINNESOTA	ISLAND OR LAND
MNDOT TRUCK STATION	STATE OF MINNESOTA	STATE OF MINNESOTA	REGIONAL WATERSHED
HIGHWAY PATROL DISTRICT OFFICE	STATE OF MINNESOTA	STATE OF MINNESOTA	
STATE TRAVEL INFORMATION CENTER	STATE OF MINNESOTA	STATE OF MINNESOTA	
REST AREA (FULL SERVICE)	STATE OF MINNESOTA	STATE OF MINNESOTA	
REST AREA (VAULT TOILET)	STATE OF MINNESOTA	STATE OF MINNESOTA	
WAYSIDE (VAULT OR PIT TOILET)	STATE OF MINNESOTA	STATE OF MINNESOTA	
PARK AND RIDE LOT	STATE OF MINNESOTA	STATE OF MINNESOTA	
PORT OF ENTRY	STATE OF MINNESOTA	STATE OF MINNESOTA	
PUBLIC ACCESS POINT	STATE OF MINNESOTA	STATE OF MINNESOTA	
MN STATE COLLEGE AND UNIVERSITY SYSTEM (MNSCU)	STATE OF MINNESOTA	STATE OF MINNESOTA	
UNIVERSITY OF MN SYSTEM	STATE OF MINNESOTA	STATE OF MINNESOTA	
FAIRGROUNDS	STATE OF MINNESOTA	STATE OF MINNESOTA	
CULTURAL FEATURES		STATE OF MINNESOTA	
STATE HISTORICAL MARKER	STATE OF MINNESOTA	STATE OF MINNESOTA	
HISTORIC DISTRICT	STATE OF MINNESOTA	STATE OF MINNESOTA	
HISTORIC SITE	STATE OF MINNESOTA	STATE OF MINNESOTA	
MONUMENT	STATE OF MINNESOTA	STATE OF MINNESOTA	



Population (U.S. Census 2010): 592



To request information from this document in an alternative format, call 651-366-4718 or 1-800-657-3774 (Greater Minnesota); 711 or 1-800-627-3529 (Minnesota Relay). You may also send an e-mail to ADRequest.dot@state.mn.us. (Please request at least one week in advance.)