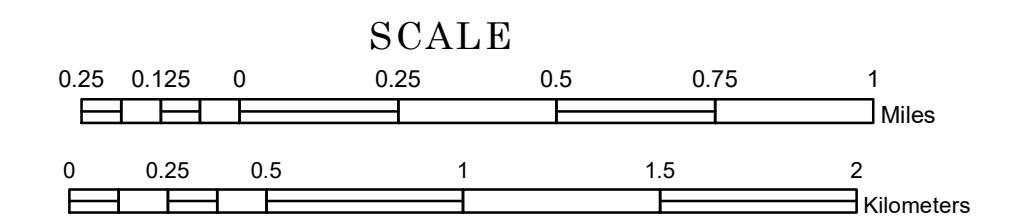


TOWNSHIP OF WOODROW

PREPARED BY THE
MINNESOTA DEPARTMENT OF TRANSPORTATION
OFFICE OF TRANSPORTATION SYSTEM MANAGEMENT

IN COOPERATION WITH
U.S. DEPARTMENT OF TRANSPORTATION
FEDERAL HIGHWAY ADMINISTRATION



1 in = 1,600 ft

2023

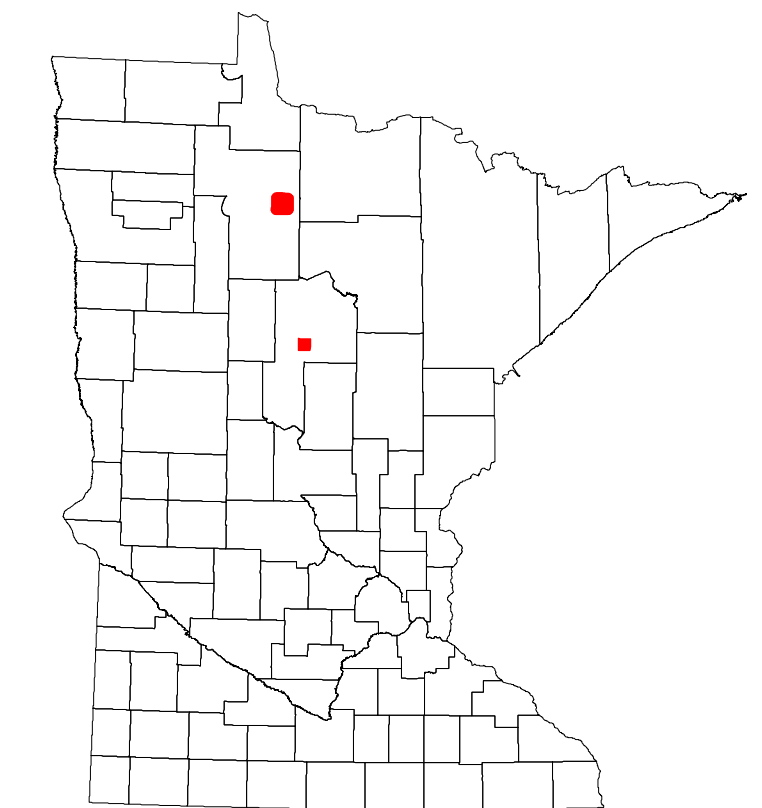
Projection:
Transverse Mercator
NAD 1986
UTM Zone 15



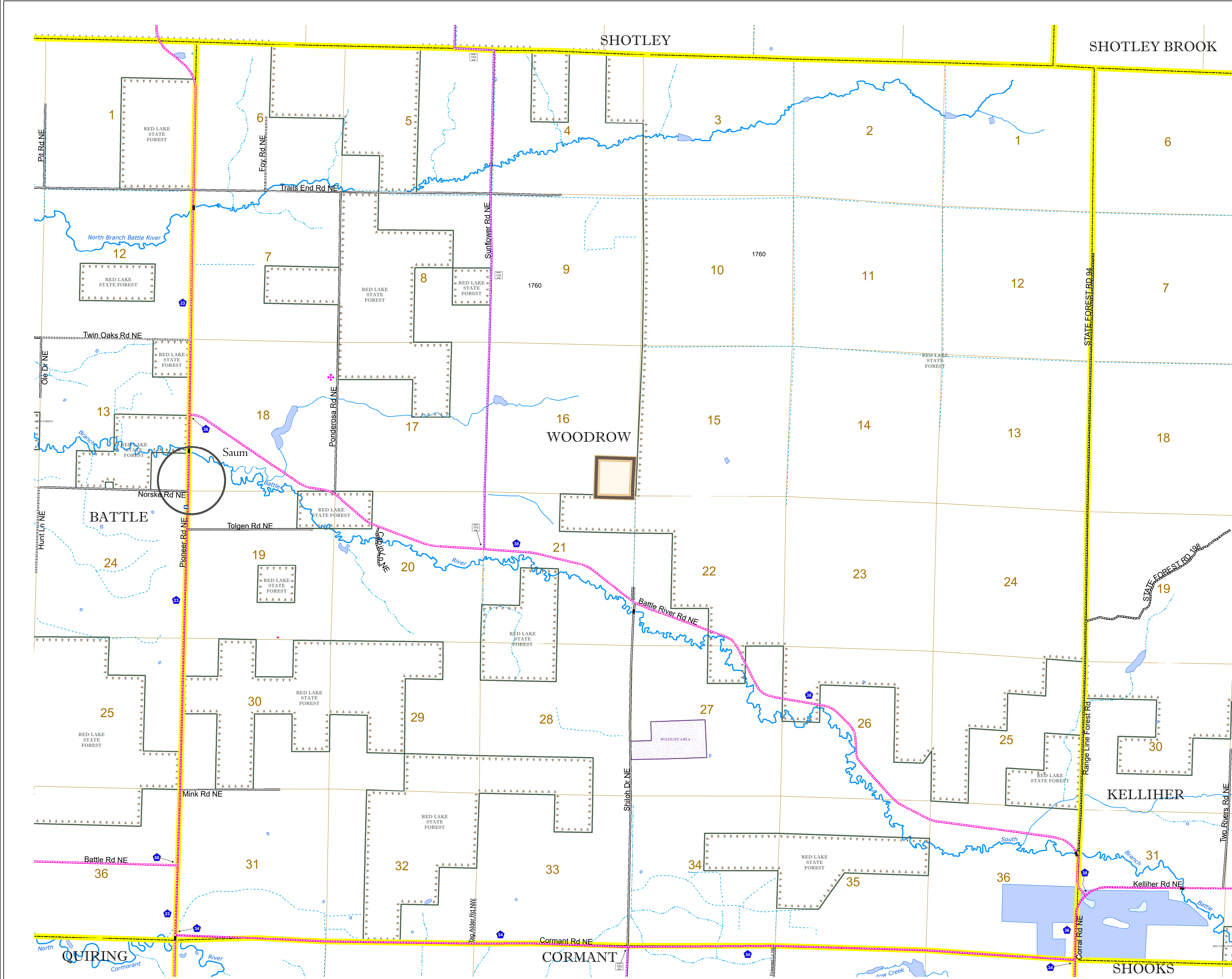
North American Datum
of 1986

ROAD AND ROADWAY FEATURES		BOUNDARY FEATURES	
INTERSTATE	(Symbol)	TRIBAL LAND	(Symbol)
US HIGHWAY	(Symbol)	STATE OF MINNESOTA	(Symbol)
MN HIGHWAY	(Symbol)	COUNTY	(Symbol)
COUNTY STATE AID HIGHWAY	(Symbol)	MUNICIPALITY	(Symbol)
COUNTY ROAD	(Symbol)	UNORGANIZED TERRITORY	(Symbol)
TOWNSHIP ROAD	(Symbol)	FEDERAL ADJUSTED URBAN AREA (2014)	(Symbol)
UNORGANIZED TERRITORY ROAD	(Symbol)	CIVIL TOWNSHIP	(Symbol)
OTHER ROADS	(Symbol)	CONGRESSIONAL TOWNSHIP	(Symbol)
Municipal	(Symbol)	SECTION	(Symbol)
Private	(Symbol)	MILITARY	(Symbol)
National Monument	(Symbol)	VOYAGEURS NATIONAL PARK	(Symbol)
National Wildlife Refuge	(Symbol)	BOUNDARY WATERS CANOE AREA WILDERNESS	(Symbol)
State Forest	(Symbol)	STATE PARK	(Symbol)
National Park	(Symbol)	REGIONAL PARK	(Symbol)
State Park	(Symbol)	NATIONAL FOREST	(Symbol)
Preserve	(Symbol)	NATIONAL AND STATE FOREST	(Symbol)
State Forest	(Symbol)	STATE FOREST	(Symbol)
Wildlife Area	(Symbol)	NATIONAL TRAIL	(Symbol)
Wildlife Refuge Area	(Symbol)	WILDLIFE REFUGEE AREA	(Symbol)
Wildlife Management Area	(Symbol)	WILDLIFE MANAGEMENT AREA	(Symbol)
Hydrologic Features	(Symbol)	RIVER OR STREAM (PERENNIAL)	(Symbol)
RIVER OR STREAM (PERENNIAL)	(Symbol)	LAKE, POND OR RESERVOIR	(Symbol)
LAKE, POND OR RESERVOIR	(Symbol)	STREAM (INTERMITTENT)	(Symbol)
STREAM (INTERMITTENT)	(Symbol)	DRAINAGE DITCH	(Symbol)
DRAINAGE DITCH	(Symbol)	WETLAND	(Symbol)
WETLAND	(Symbol)	ISLAND OR LAND	(Symbol)
ISLAND OR LAND	(Symbol)	REGIONAL WATERSHED	(Symbol)
REGIONAL WATERSHED	(Symbol)		

RAILROAD AND RAILWAY FEATURES		CITY CENTERS		PUBLIC SERVICE FEATURES	
EMPIRE BUILDER STATION (AMTRAK)	(Symbol)	STATE CAPITAL	(Symbol)	MNDOT OFFICE	(Symbol)
NORTHSTAR STATION (COMMITTEE)	(Symbol)	COUNTY SEAT	(Symbol)	MNDOT TRUCK STATION	(Symbol)
LIGHT RAIL	(Symbol)	CITY CENTER	(Symbol)	HIGHWAY PATROL DISTRICT OFFICE	(Symbol)
BLUE LINE	(Symbol)	UNINCORPORATED COMMUNITY	(Symbol)	STATE TRAVEL INFORMATION CENTER	(Symbol)
GREEN LINE	(Symbol)			REST AREA (FULL SERVICE)	(Symbol)
				REST AREA (VAULT TOILET)	(Symbol)
				WAYSIDE (VAULT OR PVI TOILET)	(Symbol)
				PARK AND RIDE LOT	(Symbol)
				PORT OF ENTRY	(Symbol)
				PUBLIC ACCESS POINT	(Symbol)
				MN STATE COLLEGE AND UNIVERSITY SYSTEM (MNSCU)	(Symbol)
				UNIVERSITY OF MN SYSTEM	(Symbol)
				FAIRGROUNDS	(Symbol)



Population (U.S. Census 2010): 73



To request information from this document in an alternative format, call 651-366-4718 or 1-800-657-3774 (Greater Minnesota); 711 or 1-800-627-3529 (Minnesota Relay). You may also send an e-mail to ADRequest.dot@state.mn.us. (Please request at least one week in advance.)

