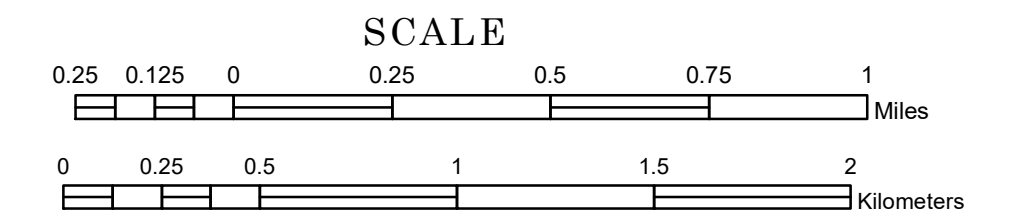


TOWNSHIP OF GILMANTON

PREPARED BY THE
MINNESOTA DEPARTMENT OF TRANSPORTATION
OFFICE OF TRANSPORTATION SYSTEM MANAGEMENT

IN COOPERATION WITH
U.S. DEPARTMENT OF TRANSPORTATION
FEDERAL HIGHWAY ADMINISTRATION



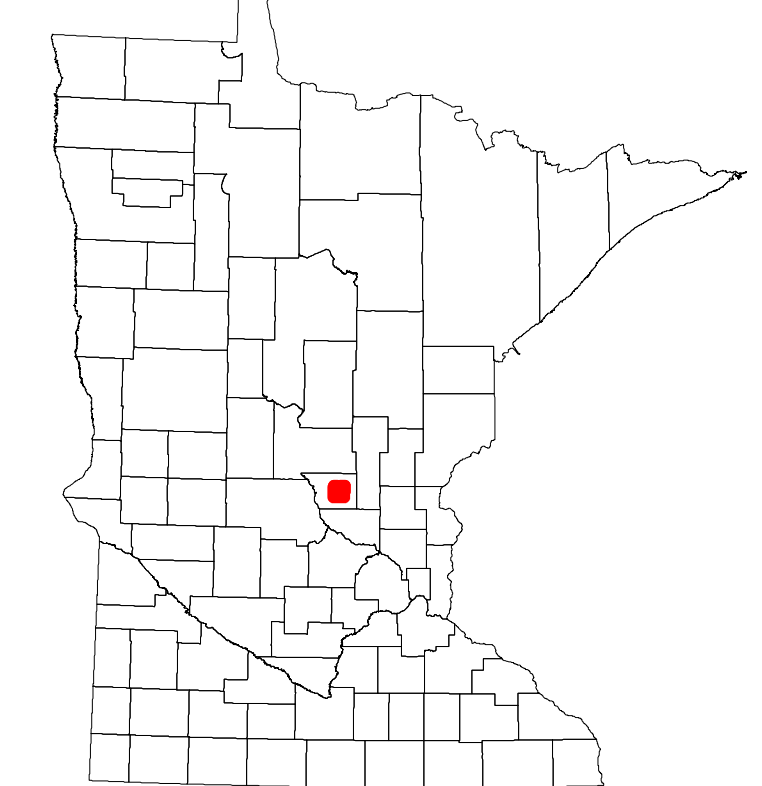
2023

Projection:
Transverse Mercator
NAD 1986
UTM Zone 15

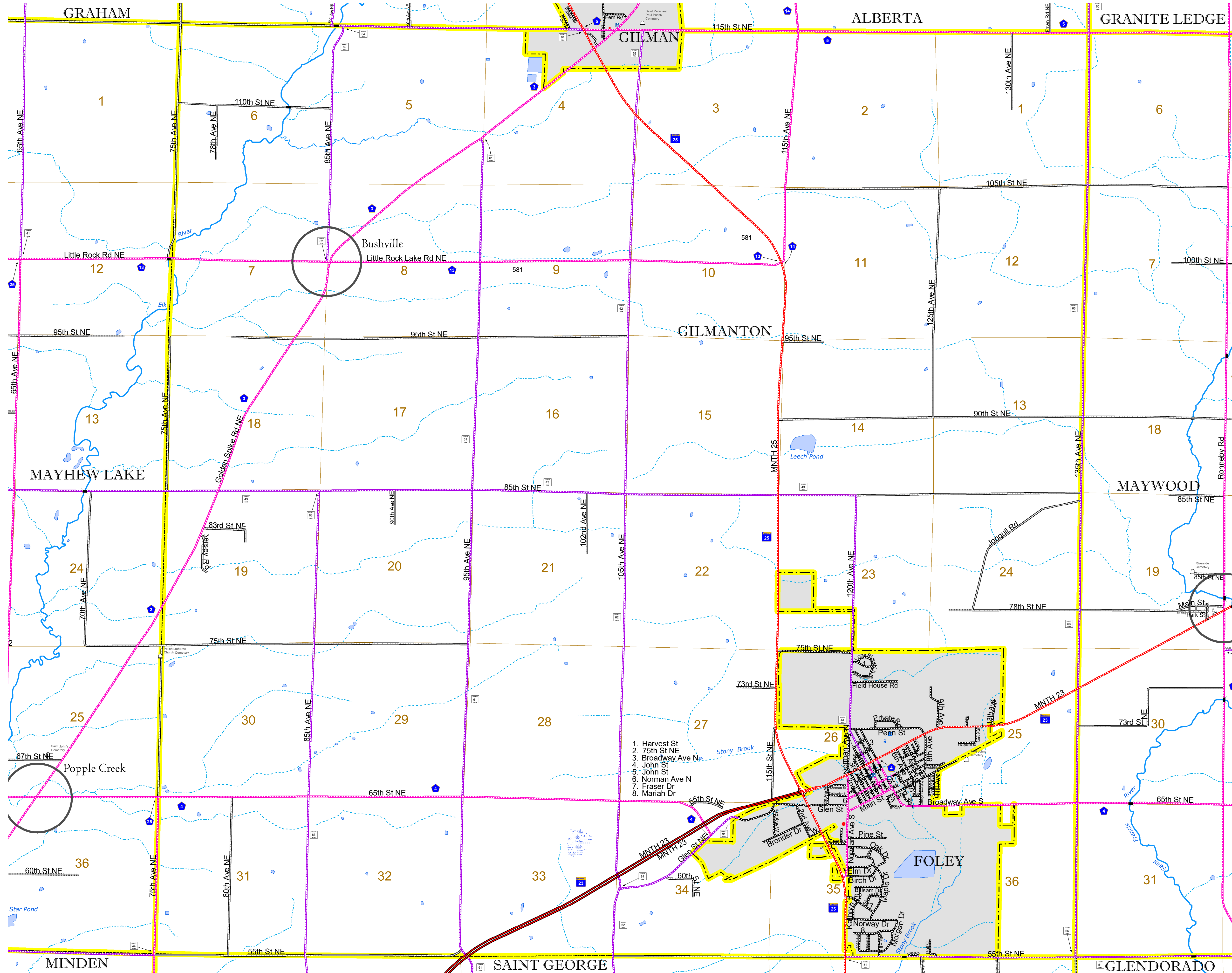


North American Datum
of 1986

ROAD AND ROADWAY FEATURES	
INTERSTATE	CONCRETE
US HIGHWAY	BITUMINOUS
MN HIGHWAY	GRAVEL
COUNTY STATE AID HIGHWAY	DIRT/UNIMPROVED
COUNTY ROAD	OTHER
TOWNSHIP ROAD	UNKNOWN
UNORGANIZED TERRITORY ROAD	
OTHER ROADS	RAMP OR CONNECTOR
Municipal	INTERSTATE EXIT
Private	AVIATION FEATURES
National Monument	COMMERCIAL AIRPORT
State Forest	GENERAL AIRPORT
National Park	AIRSTRIP
National Wildlife Refuge	SEAPLANE
State Game Preserve	AIRPORT RUNWAY
State Park	
Preserve	
RAILROAD AND RAILWAY FEATURES	
EMPIRE BUILDER STATION (AMTRAK)	COMMERCIAL AIRPORT
NORTHSTAR STATION (COMMITTEE)	GENERAL AIRPORT
SEAPLANE	AIRSTRIP
AIRPORT RUNWAY	SEAPLANE
	AIRPORT RUNWAY
INFRASTRUCTURE FEATURES	
LONG BRIDGE (200' OR GREATER SPAN)	TRIBAL LAND
MAJOR BRIDGE (20' TO 200' SPAN)	STATE OF MINNESOTA
MINOR BRIDGE (5' TO 20' SPAN)	COUNTY
DAM	MUNICIPALITY
LOCK AND DAM	UNORGANIZED TERRITORY
	FEDERAL ADJUSTED URBAN AREA (2014)
	CIVIL TOWNSHIP
	CONGRESSIONAL TOWNSHIP
	SECTION
	MILITARY
	VOYAGEURS NATIONAL PARK
	BOUNDARY WATERS CANOE AREA WILDERNESS
	STATE PARK
	REGIONAL PARK
	NATIONAL FOREST
	NATIONAL AND STATE FOREST
	STATE FOREST
	NATIONAL TRAIL
	WILDLIFE REFUGUE AREA
	WILDLIFE MANAGEMENT AREA
HYDROLOGIC FEATURES	
RIVER OR STREAM (PERENNIAL)	LAKE, POND OR RESERVOIR
STREAM (INTERMITTENT)	WETLAND
DRAINAGE DITCH	ISLAND OR LAND
WETLAND	REGIONAL WATERSHED



Population (U.S. Census 2010): 841



1. Harvest St
2. 75th St NE
3. Broadway Ave N
4. John St
5. John St
6. Norman Ave N
7. Fraser Dr
8. Mariah Dr

To request information from this document in an alternative format, call 651-366-4718 or 1-800-657-3774 (Greater Minnesota); 711 or 1-800-627-3529 (Minnesota Relay). You may also send an e-mail to ADRequest.dot@state.mn.us. (Please request at least one week in advance.)