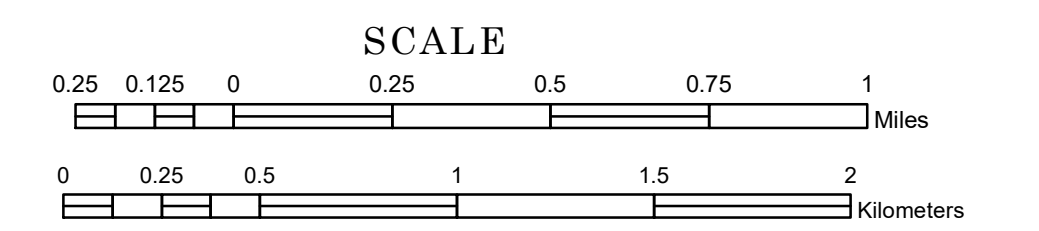


TOWNSHIP OF GRAHAM

PREPARED BY THE
MINNESOTA DEPARTMENT OF TRANSPORTATION
OFFICE OF TRANSPORTATION SYSTEM MANAGEMENT

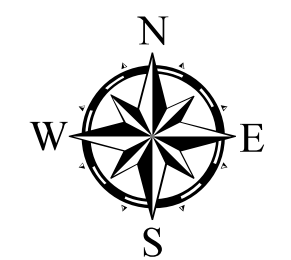
IN COOPERATION WITH
U.S. DEPARTMENT OF TRANSPORTATION
FEDERAL HIGHWAY ADMINISTRATION



1 in = 1,600 ft

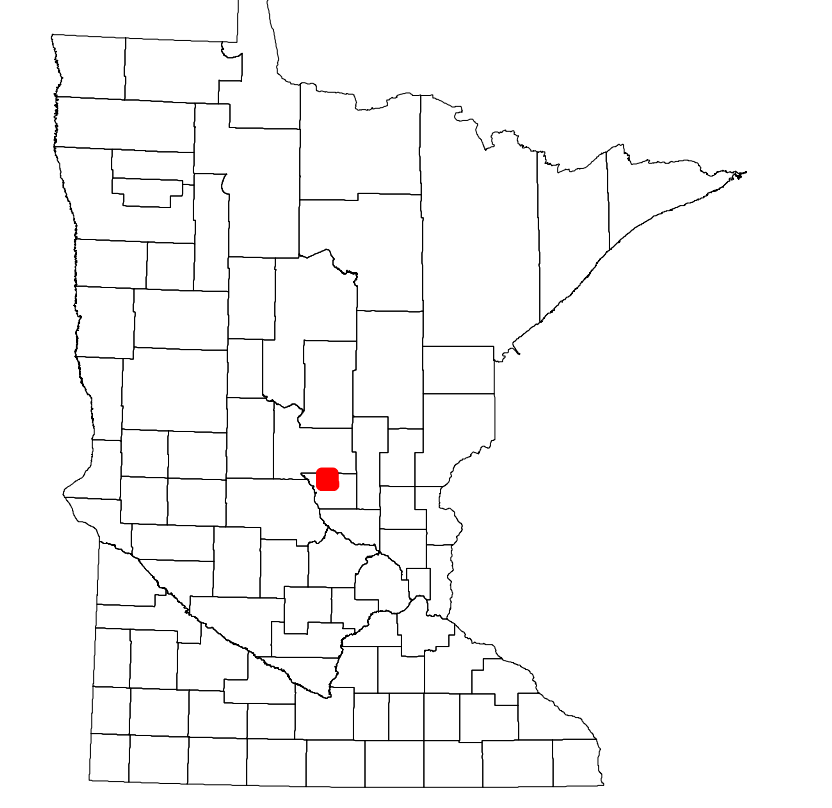
2023

Projection:
Transverse Mercator
NAD 1986
UTM Zone 15

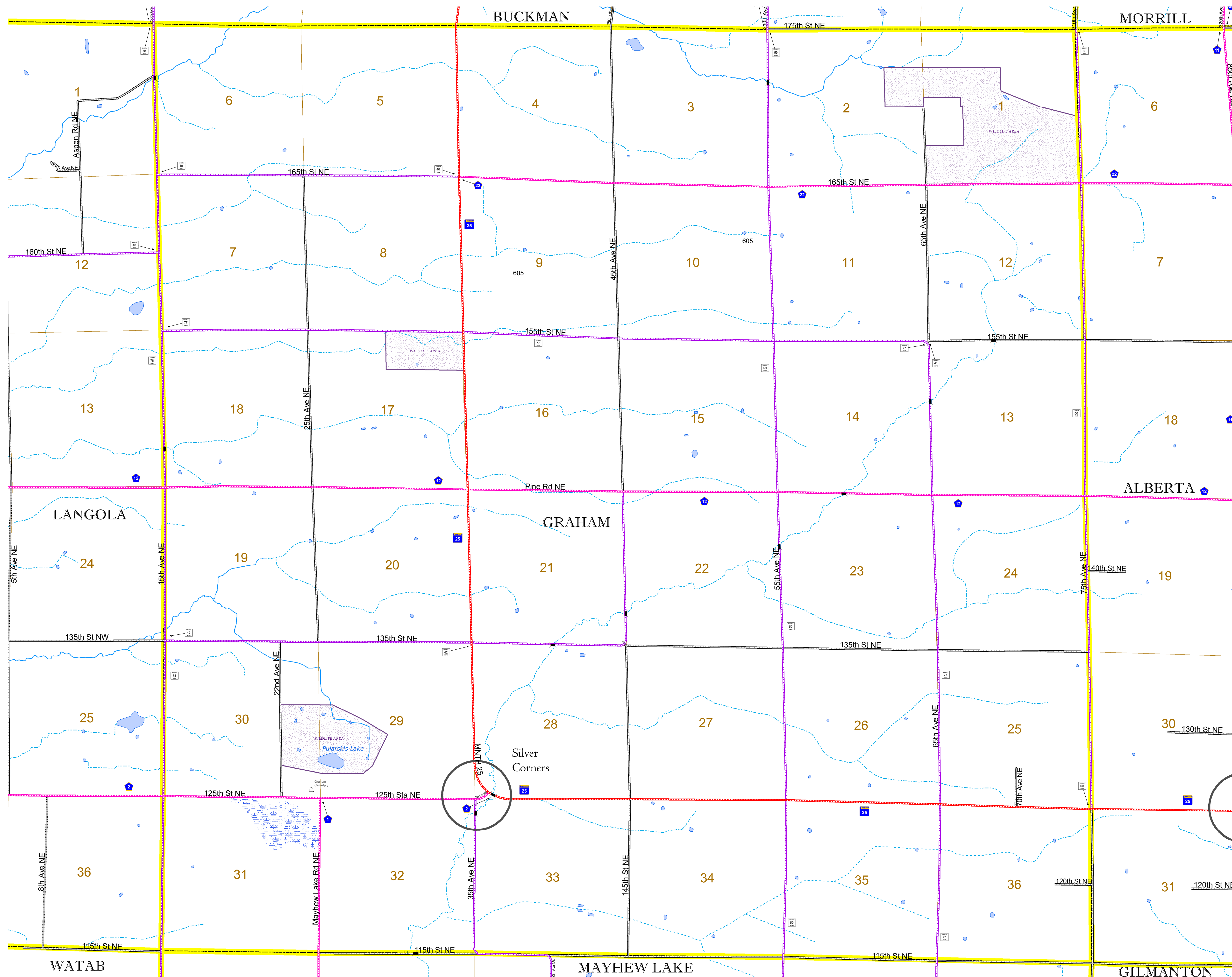


North American Datum
of 1986

| ROAD AND ROADWAY FEATURES | |
|--|---------------------------------------|
| INTERSTATE | CONCRETE |
| US HIGHWAY | BITUMINOUS |
| MN HIGHWAY | GRAVEL |
| COUNTY STATE AID HIGHWAY | DIRT/UNIMPROVED |
| COUNTY ROAD | OTHER |
| TOWNSHIP ROAD | UNKNOWN |
| UNORGANIZED TERRITORY ROAD | |
| OTHER ROADS | |
| Municipal | RAMP OR CONNECTOR |
| Private | INTERSTATE EXIT |
| National Monument | GREAT RIVER ROAD |
| National Park | |
| National Wildlife | |
| State Game | |
| National Forest | |
| State Park | |
| Preserve | |
| RAILROAD AND RAILWAY FEATURES | |
| EMPIRE BUILDER STATION (AMTRAK) | COMMERCIAL AIRPORT |
| NORTHSTAR STATION (COMMUTER) | GENERAL AIRPORT |
| | AIRSTRIP |
| | SEAPLANE |
| | AIRPORT RUNWAY |
| INFRASTRUCTURE FEATURES | |
| LONG BRIDGE (300' OR GREATER SPAN) | TRIBAL LAND |
| MAJOR BRIDGE (20' TO 300' SPAN) | STATE OF MINNESOTA |
| MINOR BRIDGE (5' TO 20' SPAN) | COUNTY |
| | MUNICIPALITY |
| | UNORGANIZED TERRITORY |
| | FEDERAL ADJUSTED URBAN AREA (2014) |
| | CIVIL TOWNSHIP |
| | CONGRESSIONAL TOWNSHIP |
| | SECTION |
| | MILITARY |
| | VOYAGEURS NATIONAL PARK |
| | BOUNDARY WATERS CANOE AREA WILDERNESS |
| | STATE PARK |
| | REGIONAL PARK |
| | NATIONAL FOREST |
| | NATIONAL AND STATE FOREST |
| | STATE FOREST |
| | NATIONAL TRAIL |
| | WILDLIFE REFUGE AREA |
| | WILDLIFE MANAGEMENT AREA |
| HYDROLOGIC FEATURES | |
| | RIVER OR STREAM (PERENNIAL) |
| | LAKE, POND OR RESERVOIR |
| | STREAM (INTERMITTENT) |
| | DRAINAGE DITCH |
| | WETLAND |
| | ISLAND OR LAND |
| | REGIONAL WATERSHED |
| CITY CENTERS | |
| STATE CAPITAL | |
| COUNTY SEAT | |
| CITY CENTER | |
| UNINCORPORATED COMMUNITY | |
| PUBLIC SERVICE FEATURES | |
| MNDOT OFFICE | |
| MNDOT TRUCK STATION | |
| HIGHWAY PATROL DISTRICT OFFICE | |
| STATE TRAVEL INFORMATION CENTER | |
| REST AREA (FULL SERVICE) | |
| REST AREA (VAULT TOILET) | |
| WAYSIDE (VAULT OR PITY TOILET) | |
| PARK AND RIDE LOT | |
| PORT OF ENTRY | |
| PUBLIC ACCESS POINT | |
| MN STATE COLLEGE AND UNIVERSITY SYSTEM (MNSCU) | |
| UNIVERSITY OF MN SYSTEM | |
| FARMGROUNDS | |
| CULTURAL FEATURES | |
| STATE HISTORICAL MARKER | |
| HISTORIC DISTRICT | |
| HISTORIC SITE | |
| MONUMENT | |



Population (U.S. Census 2010): 582



To request information from this document in an alternative format, call 651-366-4718 or 1-800-657-3774 (Greater Minnesota); 711 or 1-800-627-3529 (Minnesota Relay). You may also send an e-mail to ADARquest.dot@state.mn.us. (Please request at least one week in advance.)