

# TOWNSHIP OF ALMOND

PREPARED BY THE  
MINNESOTA DEPARTMENT OF TRANSPORTATION  
OFFICE OF TRANSPORTATION SYSTEM MANAGEMENT

IN COOPERATION WITH  
U.S. DEPARTMENT OF TRANSPORTATION  
FEDERAL HIGHWAY ADMINISTRATION



1 in = 1,600 ft

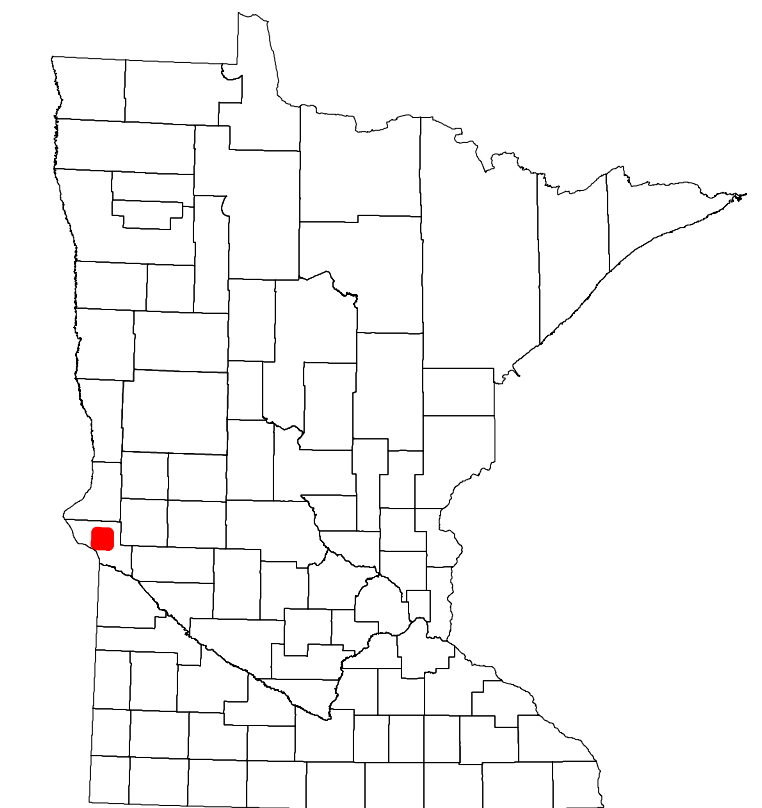
2024



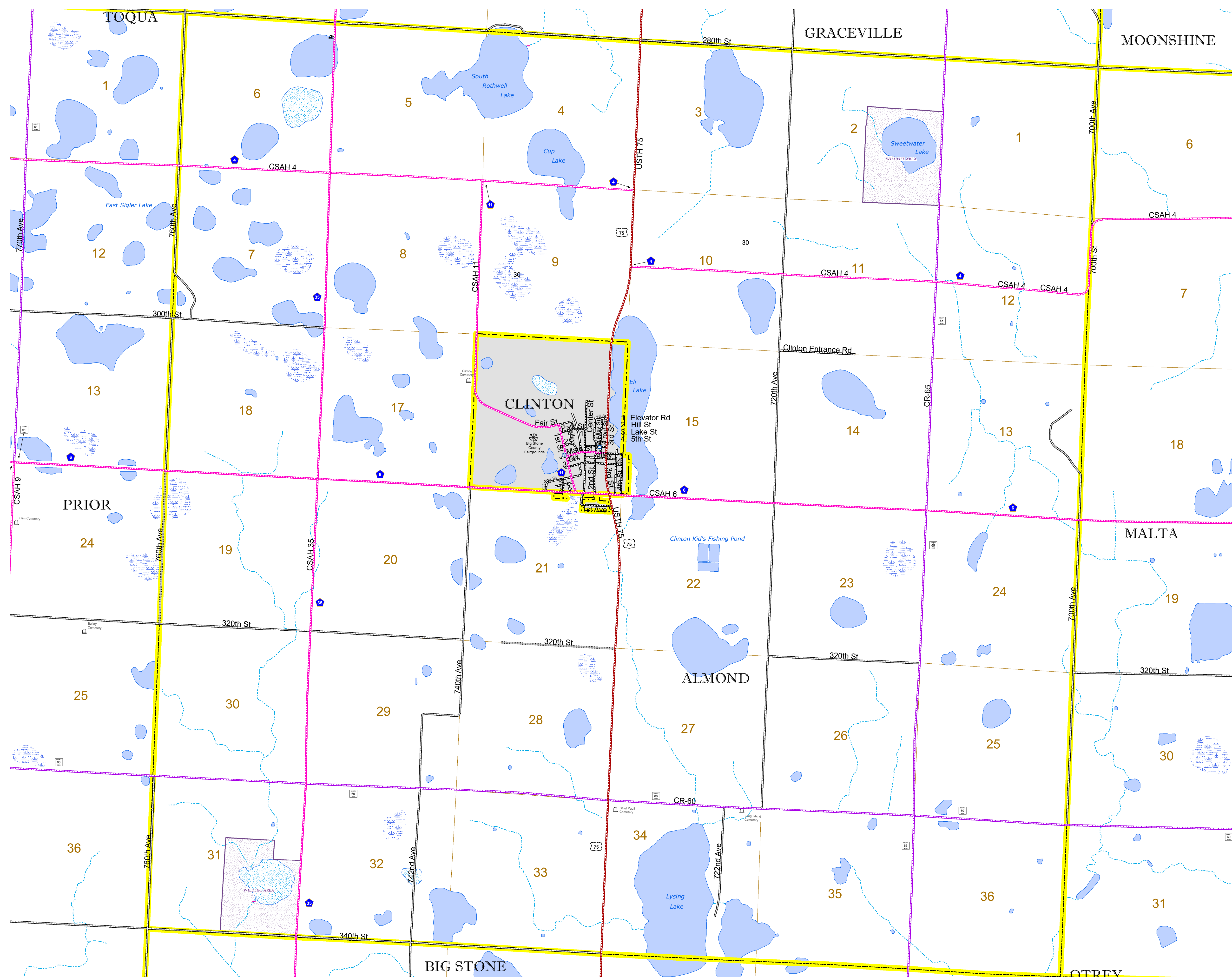
North American Datum  
of 1986

Projection:  
Transverse Mercator  
NAD 1986  
UTM Zone 15

ROAD AND ROADWAY FEATURES		BOUNDARY FEATURES	
INTERSTATE	CONCRETE	TRIBAL LAND	STATE OF MINNESOTA
US HIGHWAY	BITUMINOUS	COUNTY	MUNICIPALITY
MN HIGHWAY	GRAVEL	UNORGANIZED TERRITORY	FEDERAL ADJUSTED URBAN AREA (2014)
COUNTY STATE AID HIGHWAY	DIRT/UNIMPROVED	CIVIL TOWNSHIP	CONGRESSIONAL TOWNSHIP
COUNTY ROAD	OTHER	SECTION	MILITARY
TOWNSHIP ROAD	UNKNOWN	VOYAGEURS NATIONAL PARK	BOUNDARY WATERS CANOE AREA WILDERNESS
UNORGANIZED TERRITORY ROAD		STATE PARK	REGIONAL PARK
OTHER ROADS:		NATIONAL FOREST	NATIONAL AND STATE FOREST
Municipal	RAMP OR CONNECTOR	STATE FOREST	WILDLIFE REFUGES AREA
Private	INTERSTATE EXIT	WILDLIFE MANAGEMENT AREA	HYDROLOGIC FEATURES
Nature Service	AVIATION FEATURES	RIVER OR STREAM (PERENNIAL)	LAKE, POND OR RESERVOIR
Mulden	COMMERCIAL AIRPORT	STREAM (INTERMITTENT)	DRAINAGE DITCH
	GENERAL AIRPORT	WETLAND	ISLAND OR LAND
	AIRSTRIP	REGIONAL WATERSHED	
	SEAPLANE		
	AIRPORT RUNWAY		



Population (U.S. Census 2010): 110



To request information from this document in an alternative format, call 651-366-4718 or 1-800-657-3774 (Greater Minnesota); 711 or 1-800-627-3529 (Minnesota Relay). You may also send an e-mail to ADRequest.dot@state.mn.us. (Please request at least one week in advance.)