

LAKEVIEW

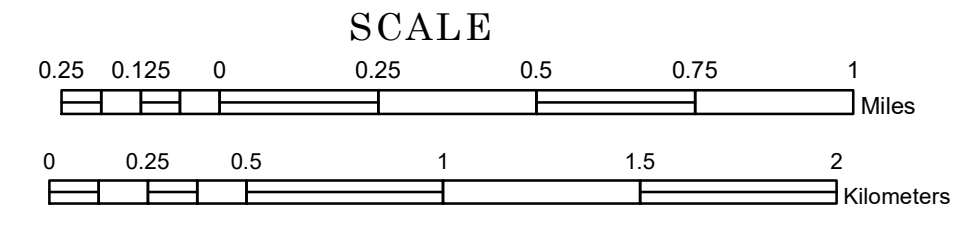
EAGLE

NORTH CARLTON

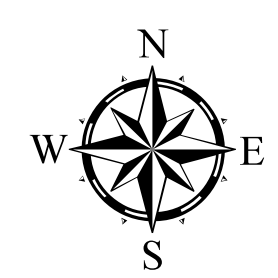
TOWNSHIP OF KALEVALA

PREPARED BY THE
MINNESOTA DEPARTMENT OF TRANSPORTATION
OFFICE OF TRANSPORTATION SYSTEM MANAGEMENT

IN COOPERATION WITH
U.S. DEPARTMENT OF TRANSPORTATION
FEDERAL HIGHWAY ADMINISTRATION



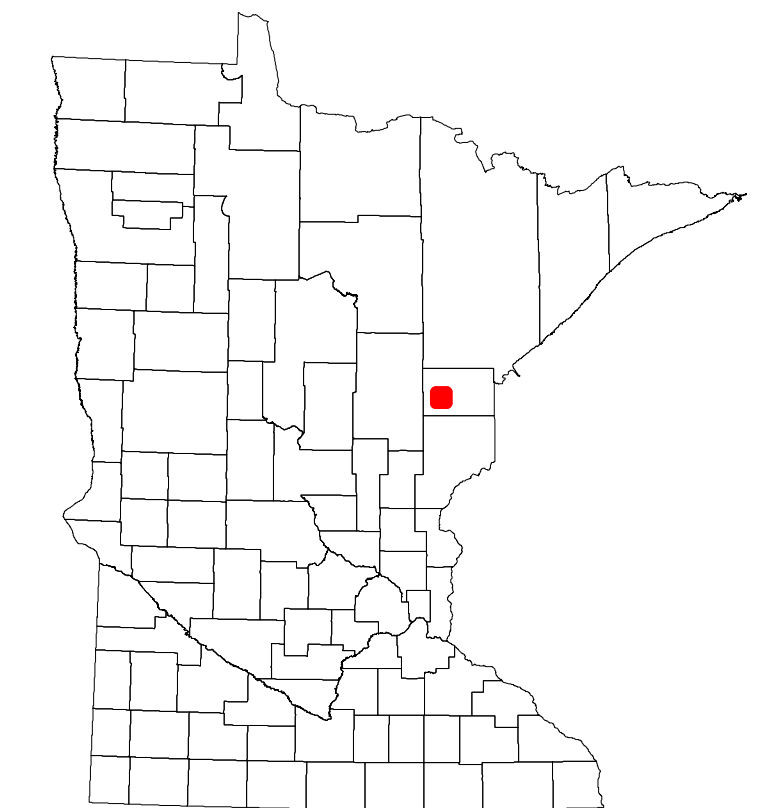
1 in = 1,600 ft
2023



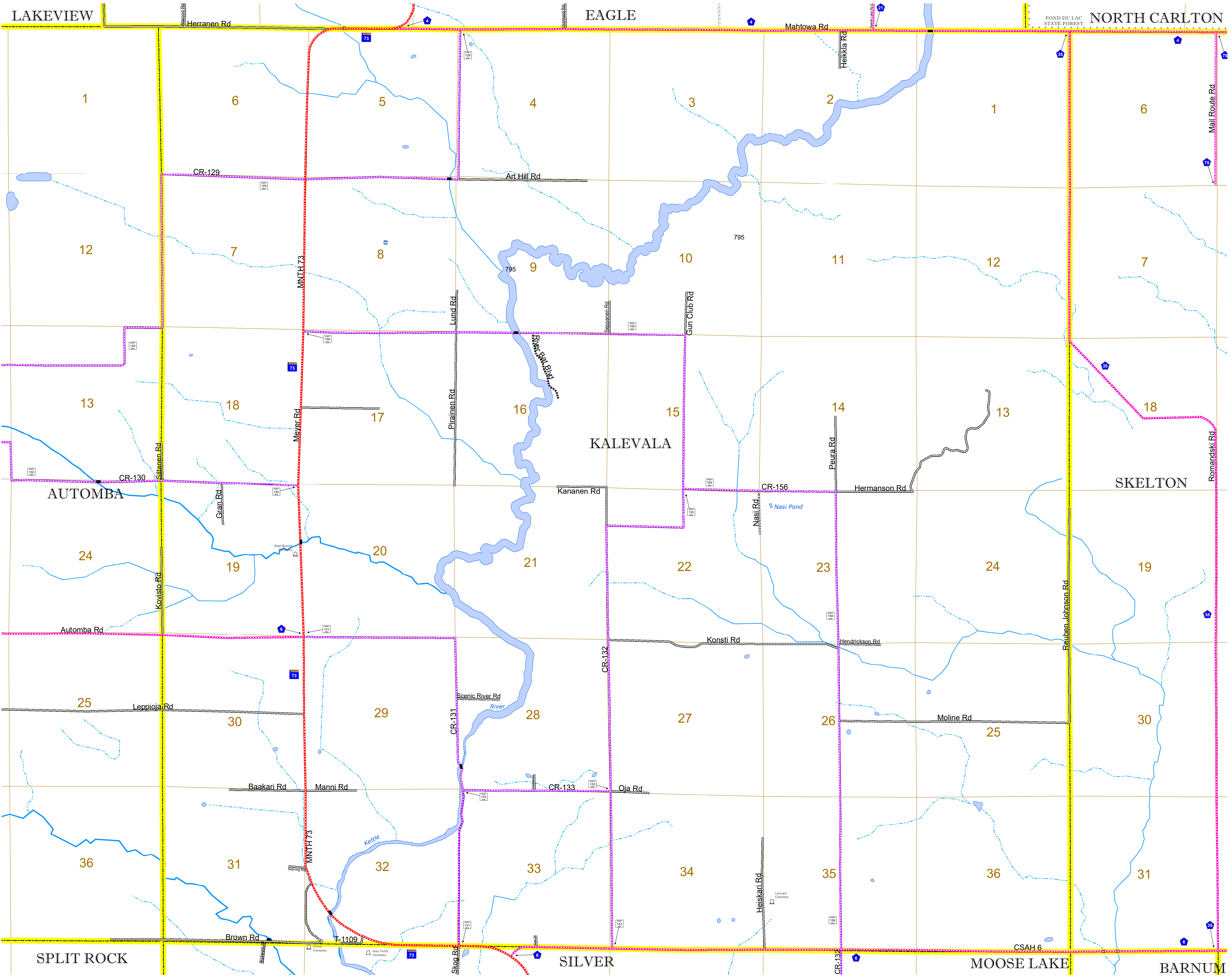
Projection:
Transverse Mercator
NAD 1986
UTM Zone 15

North American Datum
of 1986

ROAD AND ROADWAY FEATURES		BOUNDARY FEATURES	
INTERSTATE		CONCRETE	
US HIGHWAY		BITUMINOUS	
MN HIGHWAY		GRAVEL	
COUNTY STATE AID HIGHWAY		DIRT/UNIMPROVED	
COUNTY ROAD		OTHER	
TOWNSHIP ROAD		UNKNOWN	
UNORGANIZED TERRITORY ROAD		RAMP OR CONNECTOR	
OTHER ROADS		INTERSTATE EXIT	
Municipal		NATIONAL MONUMENT	
Private		NATIONAL WILDLIFE REFUGUE	
National Park		STATE PARK	
National Wildlife Refuge		Preserve	
State Park		RAILROAD AND RAILWAY FEATURES	
Preserve		COMMERCIAL AIRPORT	
RAILROAD AND RAILWAY FEATURES		GENERAL AIRPORT	
EMPIRE BUILDER STATION (AMTRAK)		AIRSTRIP	
NORTHSTAR STATION (COMPUTER)		SEAPLANE	
LIGHT RAIL		AIRPORT RUNWAY	
BLUE LINE		TRIBAL LAND	
GREEN LINE		STATE OF MINNESOTA	
INFRASTRUCTURE FEATURES		COUNTY	
LONG BRIDGE (200' or Greater Span)		MUNICIPALITY	
MAJOR BRIDGE (20' to 200' Span)		UNORGANIZED TERRITORY	
MINOR BRIDGE (5' to 20' Span)		FEDERAL ADJUSTED URBAN AREA (2014)	
DAM		CIVIL TOWNSHIP	
LOCK AND DAM		CONGRESSIONAL TOWNSHIP	
CITY CENTERS		SECTION	
STATE CAPITAL		MILITARY	
COUNTY SEAT		VOYAGEURS NATIONAL PARK	
CITY CENTER		BOUNDARY WATERS CANOE AREA WILDERNESS	
UNINCORPORATED COMMUNITY		REGIONAL PARK	
PUBLIC SERVICE FEATURES		NATIONAL FOREST	
MNDOT OFFICE		NATIONAL AND STATE FOREST	
MNDOT TRUCK STATION		STATE FOREST	
HIGHWAY PATROL DISTRICT OFFICE		NATIONAL TRAIL	
STATE TRAVEL INFORMATION CENTER		WILDLIFE REFUGE AREA	
REST AREA (Full Service)		WILDLIFE MANAGEMENT AREA	
REST AREA (Vault Toilet)		HYDROLOGIC FEATURES	
WAYSIDE (Vault or Pit Toilet)		RIVER OR STREAM (PERMANENT)	
PARK AND RIDE LOT		LAKE, POND OR RESERVOIR	
PORT OF ENTRY		STREAM (INTERMITTENT)	
PUBLIC ACCESS POINT		DRAINAGE DITCH	
MN STATE COLLEGE AND UNIVERSITY SYSTEM (MNSCU)		WETLAND	
UNIVERSITY OF MN SYSTEM		ISLAND OR LAND	
FARMGROUNDS		REGIONAL WATERSHED	
CULTURAL FEATURES			
STATE HISTORICAL MARKER			
HISTORIC DISTRICT			
HISTORIC SITE			
MONUMENT			



Population (U.S. Census 2010): 327



To request information from this document in an alternative format, call 651-366-4718 or 1-800-657-3774 (Greater Minnesota); 711 or 1-800-627-3529 (Minnesota Relay). You may also send an e-mail to ADARquest.dot@state.mn.us. (Please request at least one week in advance.)