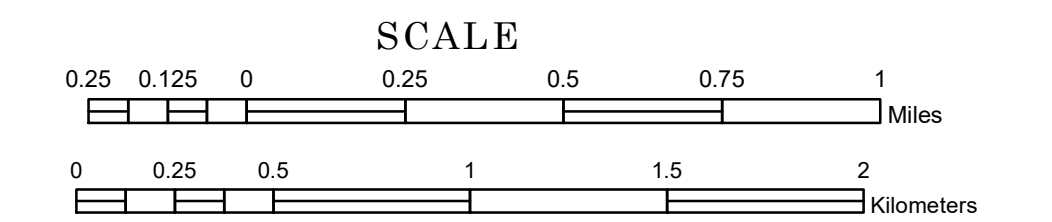


TOWNSHIP OF BULL MOOSE

PREPARED BY THE
MINNESOTA DEPARTMENT OF TRANSPORTATION
OFFICE OF TRANSPORTATION SYSTEM MANAGEMENT

IN COOPERATION WITH
U.S. DEPARTMENT OF TRANSPORTATION
FEDERAL HIGHWAY ADMINISTRATION



1 in = 1,600 ft
2024

Projection:
Transverse Mercator
NAD 1986
UTM Zone 15

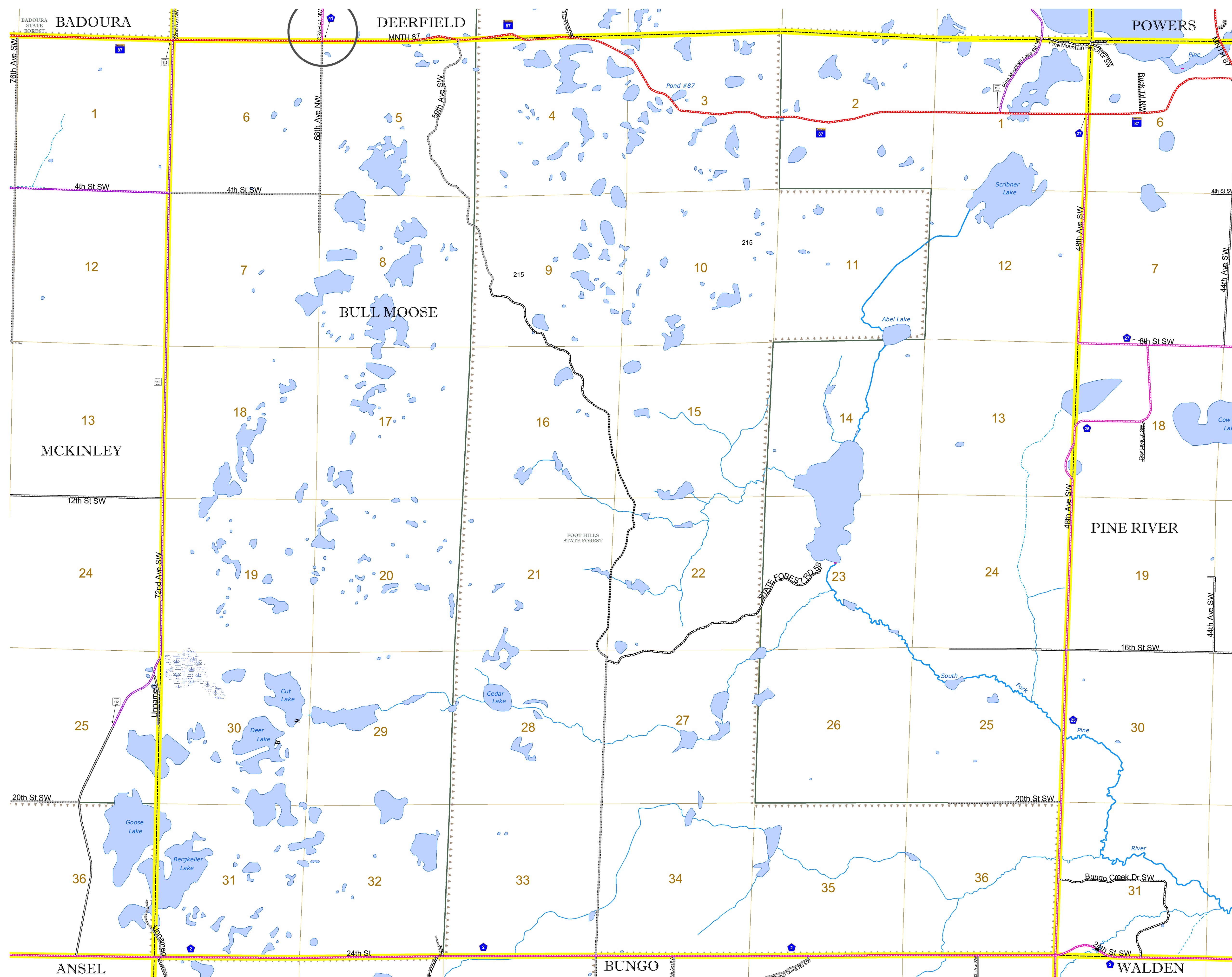


North American Datum
of 1986

ROAD AND ROADWAY FEATURES		BOUNDARY FEATURES	
INTERSTATE	CONCRETE	TRIBAL LAND	STATE OF MINNESOTA
US HIGHWAY	BITUMINOUS	COUNTY	MUNICIPALITY
MN HIGHWAY	GRAVEL	UNORGANIZED TERRITORY	FEDERAL ADJUSTED URBAN AREA (2014)
COUNTY STATE AID HIGHWAY	DIRT/UNIMPROVED	CIVIL TOWNSHIP	CONGRESSIONAL TOWNSHIP
COUNTY ROAD	OTHER	SECTION	MILITARY
TOWNSHIP ROAD	UNKNOWN	VOYAGEURS NATIONAL PARK	BOUNDRARY WATERS CANOE AREA WILDERNESS
UNORGANIZED TERRITORY ROAD	RAMP OR CONNECTOR	STATE PARK	REGIONAL PARK
OTHER ROADS	INTERSTATE EXIT	NATIONAL FOREST	NATIONAL AND STATE FOREST
Municipal	GREAT RIVER ROAD	STATE FOREST	WILDLIFE REFUGUE AREA
Private	AVIATION FEATURES	NATIONAL TRAIL	WILDLIFE MANAGEMENT AREA
National Monument	GENERAL AIRPORT	WILDLIFE REFUGUE AREA	HYDROLOGIC FEATURES
National Park	AIRSTRIP	WILDLIFE REFUGUE AREA	RIVER OR STREAM (PERMANENT)
National Wildlife Refuge	SEAPLANE	WILDLIFE REFUGUE AREA	LAKE, POND OR RESERVOIR
State Game Preserve	AIRPORT RUNWAY	WILDLIFE REFUGUE AREA	STREAM (INTERMITTENT)
State Park	COMMERCIAL AIRPORT	WILDLIFE REFUGUE AREA	DRAINAGE DITCH
Preserve	GENERAL AIRPORT	WILDLIFE REFUGUE AREA	WETLAND
	AIRSTRIP	WILDLIFE REFUGUE AREA	ISLAND OR LAND
	SEAPLANE	WILDLIFE REFUGUE AREA	REGIONAL WATERSHED
	AIRPORT RUNWAY	WILDLIFE REFUGUE AREA	
RAILROAD AND RAILWAY FEATURES		CITY CENTERS	
EMPIRE BUILDER STATION (AMTRAK)	EMPIRE BUILDER STATION (AMTRAK)	STATE CAPITAL	COUNTY SEAT
NORTHSTAR STATION (COMPUTER)	NORTHSTAR STATION (COMPUTER)	CITY CENTER	UNINCORPORATED COMMUNITY
LIGHT RAIL	LIGHT RAIL		
BLUE LINE	BLUE LINE		
GREEN LINE	GREEN LINE		
INFRASTRUCTURE FEATURES		PUBLIC SERVICE FEATURES	
LONG BRIDGE (200' OR GREATER SPAN)	LONG BRIDGE (200' OR GREATER SPAN)	MNDOT OFFICE	MNDOT TRUCK STATION
MAJOR BRIDGE (20' TO 200' SPAN)	MAJOR BRIDGE (20' TO 200' SPAN)	HIGHWAY PATROL DISTRICT OFFICE	STATE TRAVEL INFORMATION CENTER
MINOR BRIDGE (5' TO 20' SPAN)	MINOR BRIDGE (5' TO 20' SPAN)	REST AREA (FULL SERVICE)	REST AREA (VAULT TOILET)
DAM	DAM	WAYSIDE (VAULT OR PIT TOILET)	PARK AND RIDE LOT
LOCK AND DAM	LOCK AND DAM	PORT OF ENTRY	PUBLIC ACCESS POINT
		MN STATE COLLEGE AND UNIVERSITY SYSTEM (MNSCU)	UNIVERSITY OF MN SYSTEM
		FAIRGROUNDS	
		CULTURAL FEATURES	
		STATE HISTORICAL MARKER	HISTORIC DISTRICT
		HISTORIC SITE	MONUMENT



Population (U.S. Census 2010): 133



To request information from this document in an alternative format, call 651-366-4718 or 1-800-657-3774 (Greater Minnesota); 711 or 1-800-627-3529 (Minnesota Relay). You may also send an e-mail to ADRequest.dot@state.mn.us. (Please request at least one week in advance.)