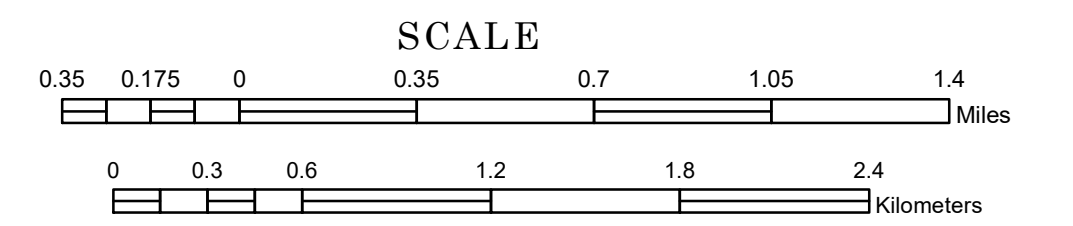


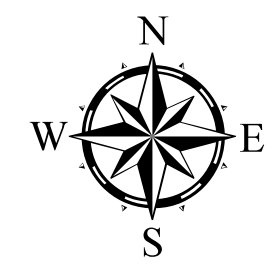
TOWNSHIP OF SYLVAN

PREPARED BY THE
MINNESOTA DEPARTMENT OF TRANSPORTATION
OFFICE OF TRANSPORTATION SYSTEM MANAGEMENT

IN COOPERATION WITH
U.S. DEPARTMENT OF TRANSPORTATION
FEDERAL HIGHWAY ADMINISTRATION



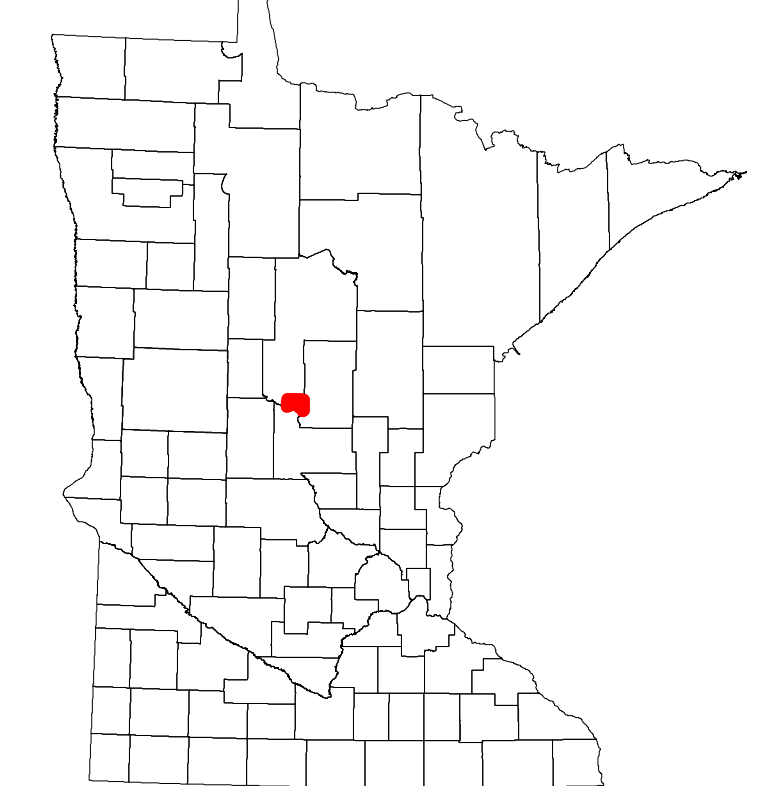
1 in = 2,000 ft
2024



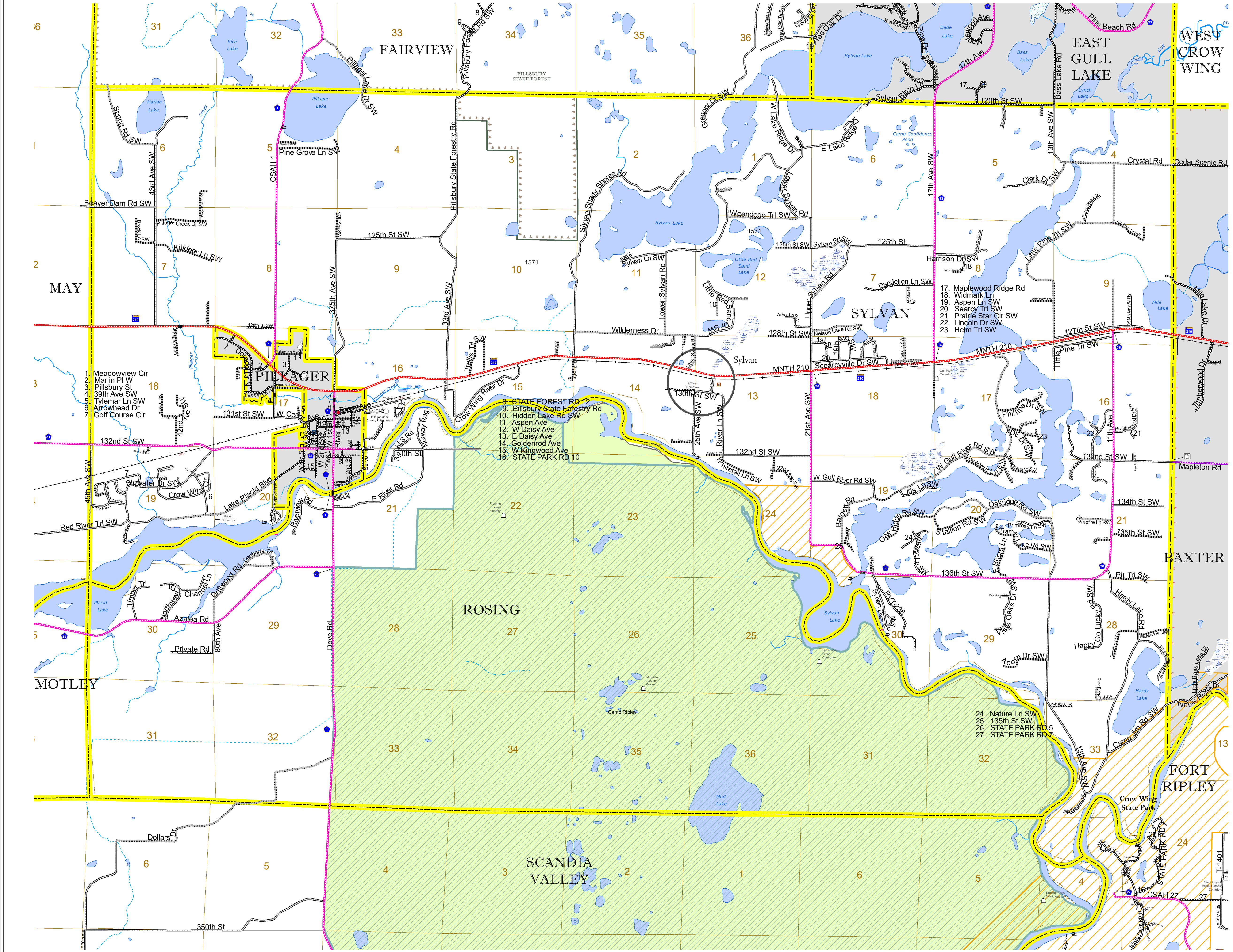
Projection:
Transverse Mercator
NAD 1986
UTM Zone 15

North American Datum
of 1986

ROAD AND ROADWAY FEATURES		RAILROAD AND RAILWAY FEATURES		BOUNDARY FEATURES	
INTERSTATE	CONCRETE	EMPIRE BUILDER STATION (AMTRAK)	COMMERCIAL AIRPORT	TRIBAL LAND	SECTION
US HIGHWAY	BITUMINOUS	NORTHSTAR STATION (COMPUTER)	GENERAL AIRPORT	STATE OF MINNESOTA	MILITARY
MN HIGHWAY	GRAVEL	LIGHT RAIL	AIRSTRIP	COUNTY	VOYAGEURS NATIONAL PARK
COUNTY STATE AID HIGHWAY	DIRT/UNIMPROVED	BLUE LINE	SEAPLANE	MUNICIPALITY	BOUNDARY WATERS CANOE AREA WILDERNESS
COUNTY ROAD	OTHER	GREEN LINE	AIRPORT RUNWAY	UNORGANIZED TERRITORY	STATE PARK
TOWNSHIP ROAD	UNKNOWN	LONG BRIDGE (200' OR GREATER SPAN)	AVIATION FEATURES	FEDERAL ADJUSTED URBAN AREA (2014)	NATIONAL FOREST
UNORGANIZED TERRITORY ROAD		MAJOR BRIDGE (20' TO 200' SPAN)		CIVIL TOWNSHIP	NATIONAL AND STATE FOREST
OTHER ROADS		MINOR BRIDGE (5' TO 20' SPAN)		CONGRESSIONAL TOWNSHIP	STATE FOREST
Municipal		DAM		SECTION	NATIONAL TRAIL
Private		LOCK AND DAM		MILITARY	WILDLIFE REFUGE AREA
National Monument				VOYAGEURS NATIONAL PARK	WILDLIFE MANAGEMENT AREA
National Park				BOUNDARY WATERS CANOE AREA WILDERNESS	HYDROLOGIC FEATURES
National Wildlife State Game				STATE PARK	RIVER OR STREAM (PERMANENT)
Military				NATIONAL FOREST	LAKE, POND OR RESERVOIR
				NATIONAL AND STATE FOREST	STREAM (INTERMITTENT)
				STATE FOREST	DRAINAGE DITCH
				NATIONAL TRAIL	WETLAND
				WILDLIFE REFUGE AREA	ISLAND OR LAND
				WILDLIFE MANAGEMENT AREA	REGIONAL WATERSHED
				HYDROLOGIC FEATURES	
				RIVER OR STREAM (PERMANENT)	
				LAKE, POND OR RESERVOIR	
				STREAM (INTERMITTENT)	
				DRAINAGE DITCH	
				WETLAND	
				ISLAND OR LAND	
				REGIONAL WATERSHED	



Population (U.S. Census 2010): 2702



To request information from this document in an alternative format, call 651-366-4718 or 1-800-657-3774 (Greater Minnesota); 711 or 1-800-627-3529 (Minnesota Relay). You may also send an e-mail to ADarequest.dot@state.mn.us. (Please request at least one week in advance.)