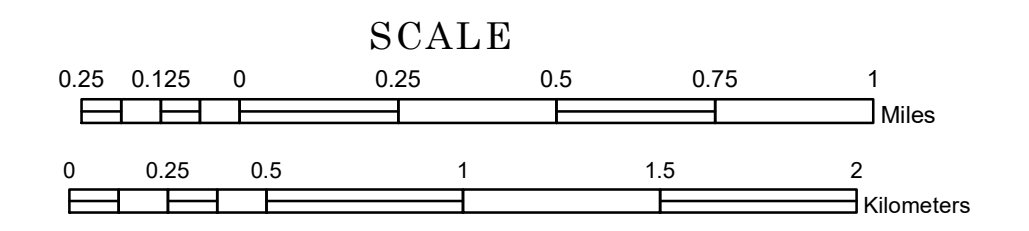


TOWNSHIP OF MANDT

PREPARED BY THE
MINNESOTA DEPARTMENT OF TRANSPORTATION
OFFICE OF TRANSPORTATION SYSTEM MANAGEMENT

IN COOPERATION WITH
U.S. DEPARTMENT OF TRANSPORTATION
FEDERAL HIGHWAY ADMINISTRATION



1 in = 1,600 ft

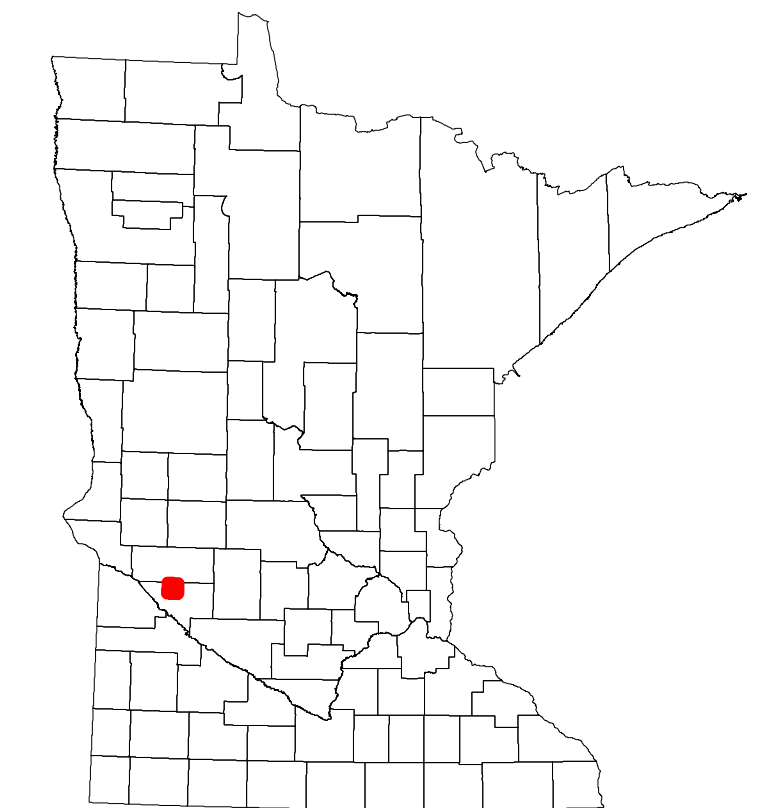
2023

Projection:
Transverse Mercator
NAD 1986
UTM Zone 15

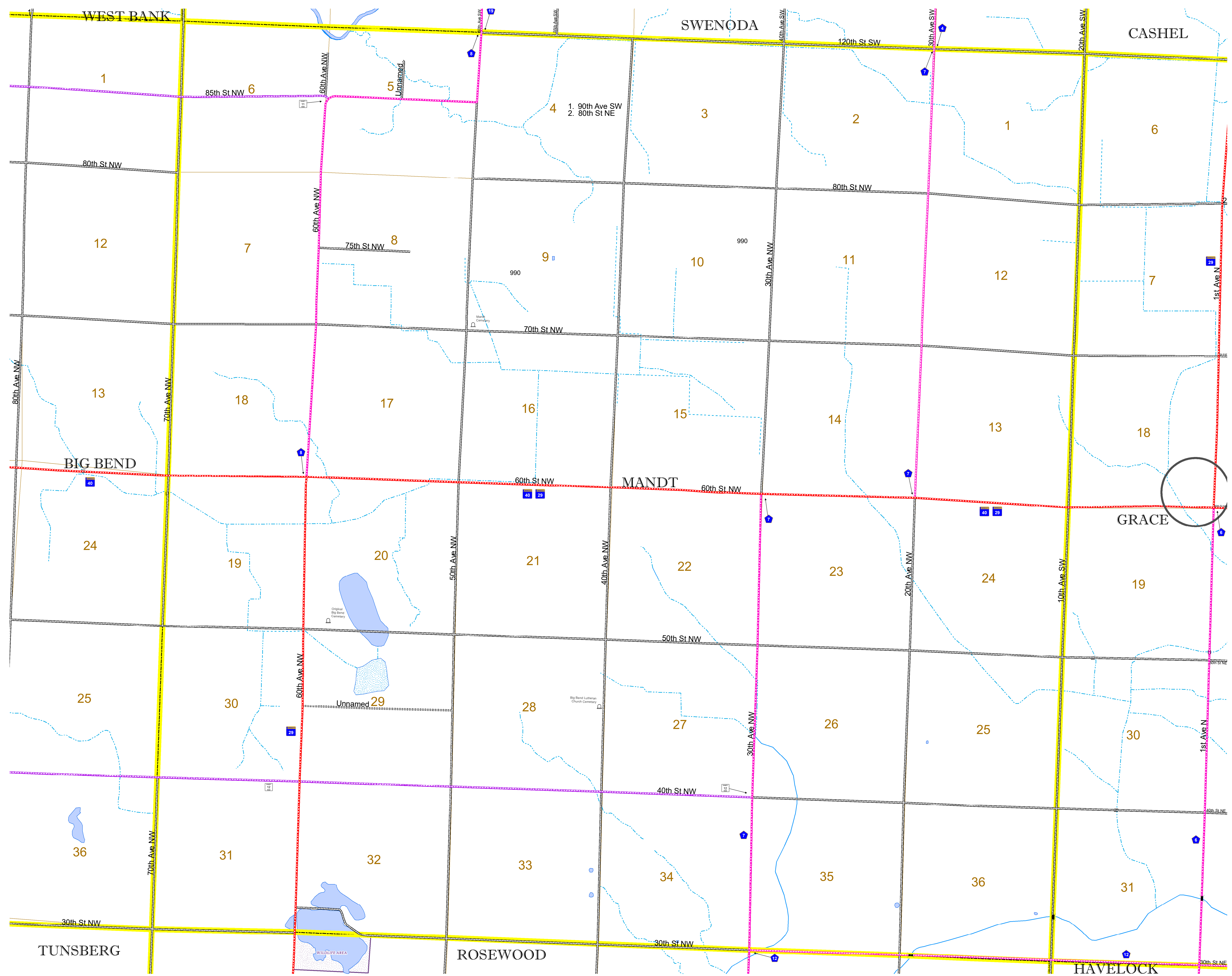


North American Datum
of 1986

| ROAD AND ROADWAY FEATURES | | AVIATION FEATURES | |
|----------------------------|--|---------------------------------|------------------------------------|
| INTERSTATE | CONCRETE | COMMERCIAL AIRPORT | GENERAL AIRPORT |
| US HIGHWAY | BITUMINOUS | AIRSTRIP | SEAPLANE |
| MN HIGHWAY | GRAVEL | AIRPORT RUNWAY | RAILROAD AND RAILWAY FEATURES |
| COUNTY STATE AID HIGHWAY | DIRT/UNIMPROVED | EMPIRE BUILDER STATION (AMTRAK) | NORTHSTAR STATION (COMPUTER) |
| COUNTY ROAD | OTHER | LIGHT RAIL | BLUE LINE |
| TOWNSHIP ROAD | UNKNOWN | GREEN LINE | LONG BRIDGE (200' OR GREATER SPAN) |
| UNORGANIZED TERRITORY ROAD | | OTHER ROADS | MAJOR BRIDGE (20' TO 200' SPAN) |
| MUNICIPAL | RAMP OR CONNECTOR | NATIONAL SERVICE | MINOR BRIDGE (5' TO 20' SPAN) |
| PRIVATE | INTERSTATE EXIT | NATIONAL MONUMENT | DAM |
| NATIONAL FOREST | AVIATION FEATURES | NATIONAL WILDLIFE | LOCK AND DAM |
| STATE PARK | GENERAL AIRPORT | STATE PARK | |
| PRESERVE | AIRSTRIP | PRESERVE | |
| | SEAPLANE | | |
| | AIRPORT RUNWAY | | |
| | BOUNDARY FEATURES | | |
| | TRIBAL LAND | | |
| | STATE OF MINNESOTA | | |
| | COUNTY | | |
| | MUNICIPALITY | | |
| | UNORGANIZED TERRITORY | | |
| | FEDERAL ADJUSTED URBAN AREA (2014) | | |
| | CIVIL TOWNSHIP | | |
| | CONGRESSIONAL TOWNSHIP | | |
| | CITY CENTERS | | |
| | STATE CAPITAL | | |
| | COUNTY SEAT | | |
| | CITY CENTER | | |
| | UNINCORPORATED COMMUNITY | | |
| | MILITARY | | |
| | MNDOT OFFICE | | |
| | MNDOT TRUCK STATION | | |
| | HIGHWAY PATROL DISTRICT OFFICE | | |
| | STATE TRAVEL INFORMATION CENTER | | |
| | REST AREA (FULL SERVICE) | | |
| | REST AREA (VAULT TOILET) | | |
| | WAYSIDE (VAULT OR PITY TOILET) | | |
| | PARK AND RIDE LOT | | |
| | PORT OF ENTRY | | |
| | PUBLIC ACCESS POINT | | |
| | MN STATE COLLEGE AND UNIVERSITY SYSTEM (MNSCU) | | |
| | UNIVERSITY OF MN SYSTEM | | |
| | FAIRGROUNDS | | |
| | CULTURAL FEATURES | | |
| | STATE HISTORICAL MARKER | | |
| | HISTORIC DISTRICT | | |
| | HISTORIC SITE | | |
| | MONUMENT | | |
| | HYDROLOGIC FEATURES | | |
| | RIVER OR STREAM (PERMANENT) | | |
| | LAKE, POND OR RESERVOIR | | |
| | STREAM (INTERMITTENT) | | |
| | DRAINAGE DITCH | | |
| | WETLAND | | |
| | ISLAND OR LAND | | |
| | REGIONAL WATERSHED | | |



Population (U.S. Census 2010): 152



To request information from this document in an alternative format, call 651-366-4718 or 1-800-657-3774 (Greater Minnesota); 711 or 1-800-627-3529 (Minnesota Relay). You may also send an e-mail to ADRequest.dot@state.mn.us. (Please request at least one week in advance.)