

TOWNSHIP OF LEON

PREPARED BY THE
MINNESOTA DEPARTMENT OF TRANSPORTATION
OFFICE OF TRANSPORTATION SYSTEM MANAGEMENT

IN COOPERATION WITH
U.S. DEPARTMENT OF TRANSPORTATION
FEDERAL HIGHWAY ADMINISTRATION



1 in = 1,600 ft

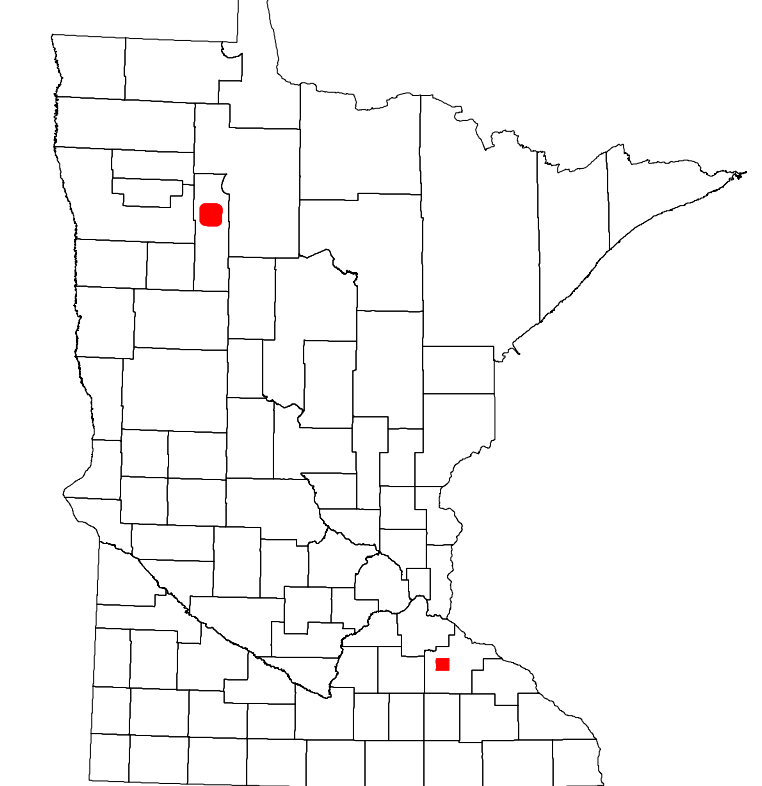
2023



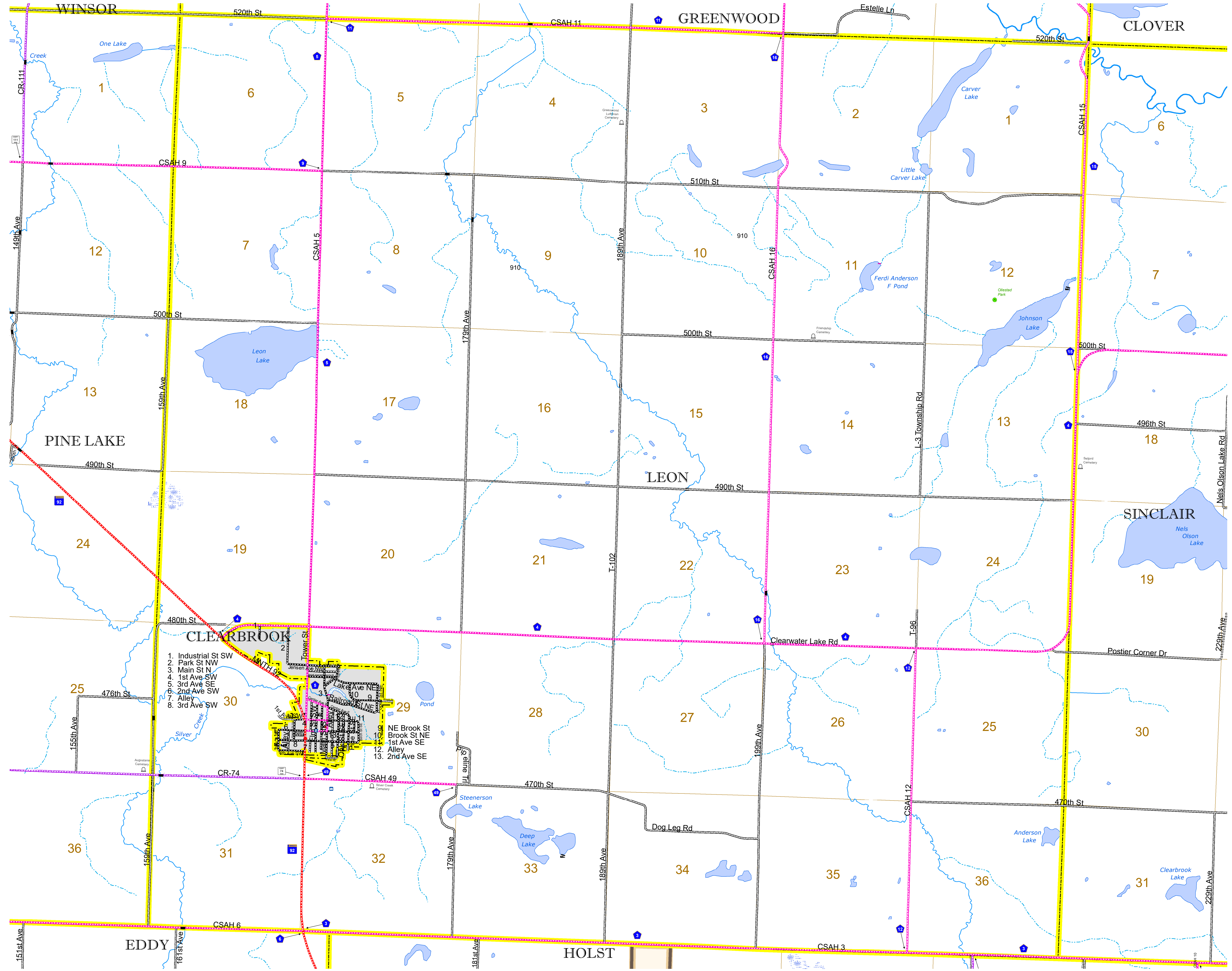
Projection:
Transverse Mercator
NAD 1986
UTM Zone 15

North American Datum
of 1986

ROAD AND ROADWAY FEATURES	
INTERSTATE	CONCRETE
US HIGHWAY	BITUMINOUS
MN HIGHWAY	GRAVEL
COUNTY STATE AID HIGHWAY	DIRT/UNIMPROVED
COUNTY ROAD	OTHER
TOWNSHIP ROAD	UNKNOWN
UNORGANIZED TERRITORY ROAD	
OTHER ROADS	RAMP OR CONNECTOR
Municipal	Private
National Monument	State Forest
National Park	National Wildlife
National Forest	State Game
State Park	Preserve
Railroad and Railway Features	Aviation Features
Commercial Airport	General Airport
Airstrip	Seaplane
Airport Runway	
Boundary Features	
Tribal Land	State of Minnesota
County	Municipality
Unorganized Territory	Federal Adjusted Urban Area (2014)
Civil Township	Congressional Township
Section	Military
Voyageurs National Park	Boundary Waters Canoe Area Wilderness
Regional Park	National Forest
National and State Forest	State Forest
Wildlife Refuge Area	Wildlife Management Area
Hydrologic Features	River or Stream (Perennial)
Lake, Pond or Reservoir	Stream (Intermittent)
Drainage Ditch	Wetland
Island or Land	Regional Watershed



Population (U.S. Census 2010): 345



1. Industrial St SW
2. Park St NW
3. Main St N
4. 1st Ave SW
5. 3rd Ave SE
6. 2nd Ave SW
7. Alley
8. 3rd Ave SW
9. NE Brook St
10. Brook St NE
11. 1st Ave SE
12. Alley
13. 2nd Ave SE

To request information from this document in an alternative format, call 651-366-4718 or 1-800-657-3774 (Greater Minnesota); 711 or 1-800-627-3529 (Minnesota Relay). You may also send an e-mail to ADarequest.dot@state.mn.us. (Please request at least one week in advance.)