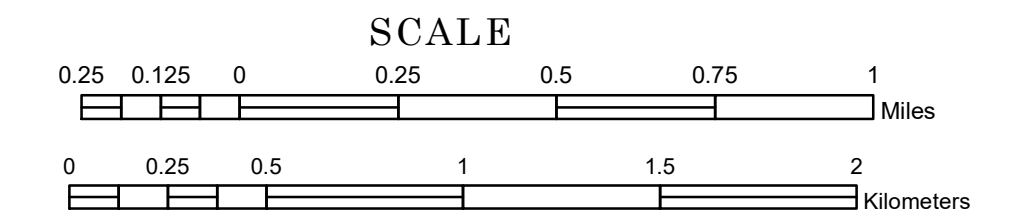


TOWNSHIP OF LONG LOST LAKE

PREPARED BY THE
MINNESOTA DEPARTMENT OF TRANSPORTATION
OFFICE OF TRANSPORTATION SYSTEM MANAGEMENT

IN COOPERATION WITH
U.S. DEPARTMENT OF TRANSPORTATION
FEDERAL HIGHWAY ADMINISTRATION



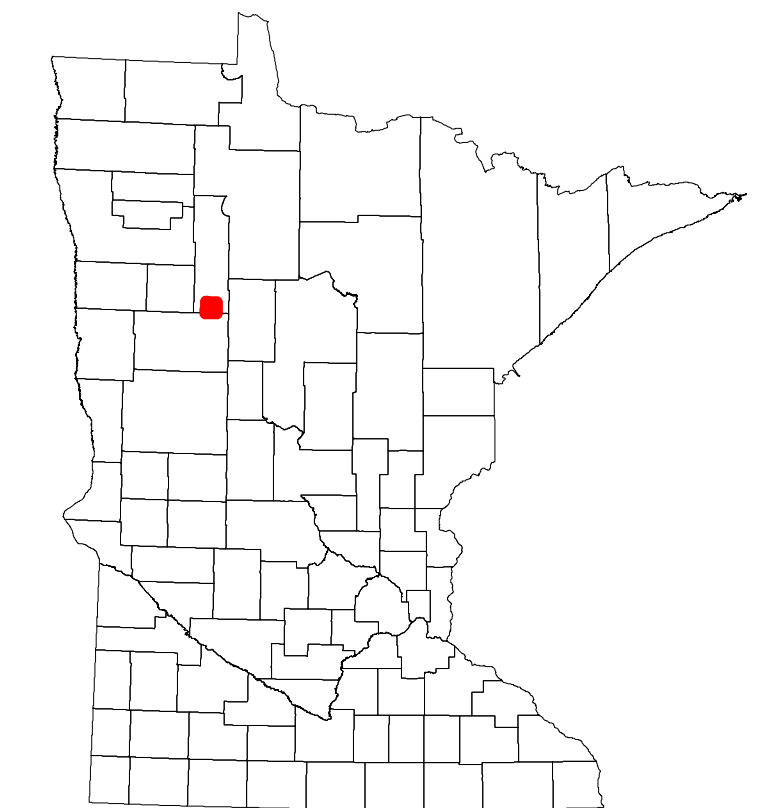
1 in = 1,600 ft
2023

Projection:
Transverse Mercator
NAD 1986
UTM Zone 15

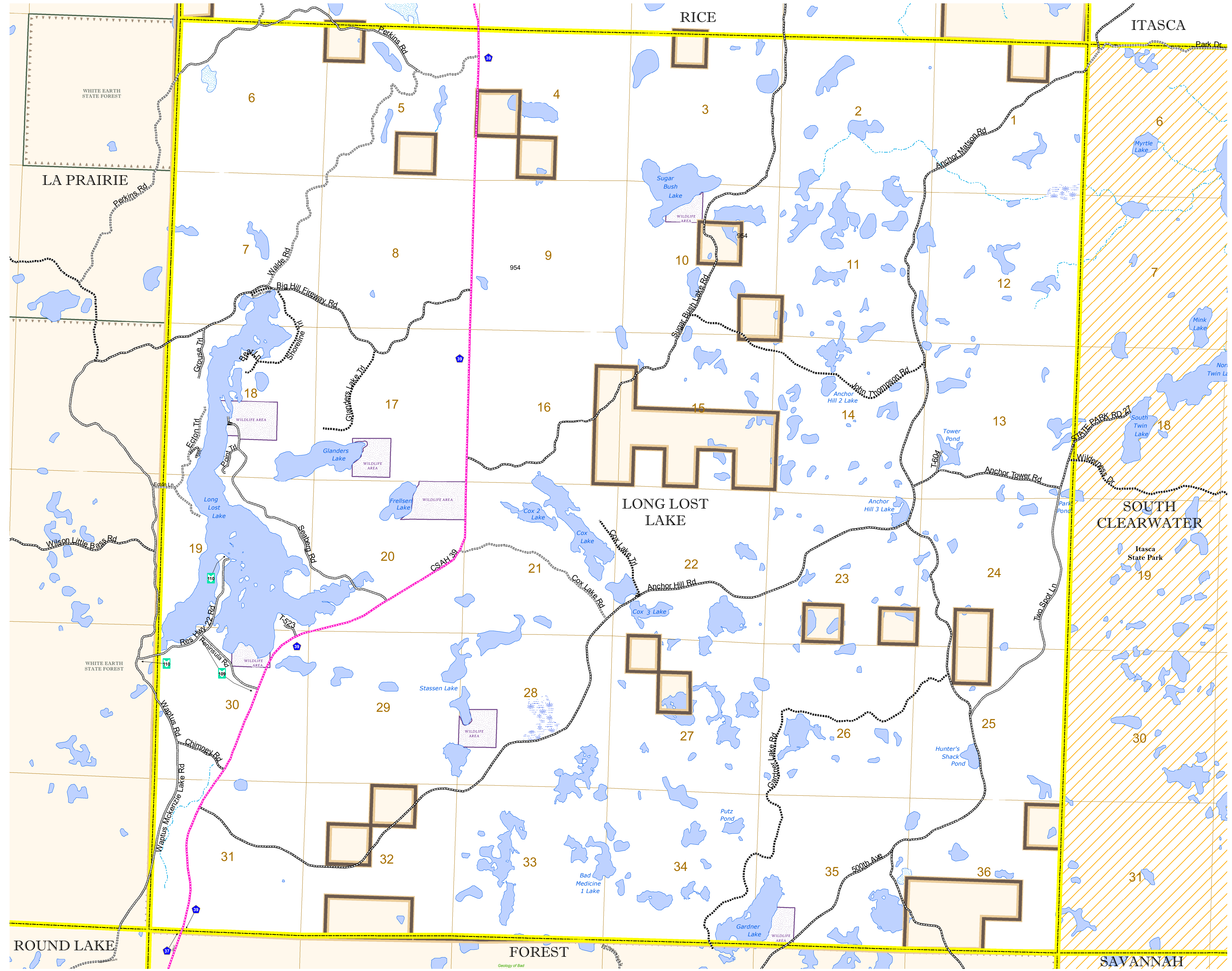


North American Datum
of 1986

ROAD AND ROADWAY FEATURES			
INTERSTATE	CONCRETE		
US HIGHWAY	BITUMINOUS		
MN HIGHWAY	GRAVEL		
COUNTY STATE AID HIGHWAY	DIRT/UNIMPROVED		
COUNTY ROAD	OTHER		
TOWNSHIP ROAD	UNKNOWN		
UNORGANIZED TERRITORY ROAD			
OTHER ROADS	RAMP OR CONNECTOR		
Municipal	National Monument	State Forest	
Nature Service	National Park	National Wildlife	State Game
Military	National Forest	State Park	Preserve
RAILROAD AND RAILWAY FEATURES		AVIATION FEATURES	
EMPIRE BUILDER STATION (AMTRAK)		COMMERCIAL AIRPORT	
NORTHSTAR STATION (COMMUTER)		GENERAL AIRPORT	
LIGHT RAIL		AIRSTRIP	
BLUE LINE		SEAPLANE	
GREEN LINE		AIRPORT RUNWAY	
INFRASTRUCTURE FEATURES		BOUNDARY FEATURES	
LONG BRIDGE (200' OR GREATER SPAN)		TRIBAL LAND	
MAJOR BRIDGE (20' TO 200' SPAN)		STATE OF MINNESOTA	
MINOR BRIDGE (5' TO 20' SPAN)		COUNTY	
DAM		MUNICIPALITY	
LOCK-AND-DAM		UNORGANIZED TERRITORY	
CITY CENTERS		FEDERAL ADJUSTED URBAN AREA (2014)	
STATE CAPITAL	COUNTY SEAT	CITY CENTER	UNINCORPORATED COMMUNITY
PUBLIC SERVICE FEATURES		SECTION	
MNDOT OFFICE		MILITARY	
MNDOT TRUCK STATION		VOYAGEURS NATIONAL PARK	
HIGHWAY PATROL DISTRICT OFFICE		BOUNDARY WATERS CANOE AREA WILDERNESS	
STATE TRAVEL INFORMATION CENTER		STATE PARK	
REST AREA (Full Service)		REGIONAL PARK	
REST AREA (Vault Toilet)		NATIONAL FOREST	
WAYSIDE (Vault or Potty Toilet)		NATIONAL AND STATE FOREST	
PARK AND RIDE LOT		STATE FOREST	
PORT OF ENTRY		NATIONAL TRAIL	
PUBLIC ACCESS POINT		WILDLIFE REFUGEE AREA	
MN STATE COLLEGE AND UNIVERSITY SYSTEM (MNSCU)		WILDLIFE MANAGEMENT AREA	
UNIVERSITY OF MN SYSTEM		HYDROLOGIC FEATURES	
FAIRGROUNDS		RIVER OR STREAM (PERMANENT)	
CULTURAL FEATURES		LAKE, POND OR RESERVOIR	
STATE HISTORICAL MARKER		STREAM (INTERMITTENT)	
HISTORIC DISTRICT		DRAINAGE DITCH	
HISTORIC SITE		WETLAND	
MONUMENT		ISLAND OR LAND	
		REGIONAL WATERSHED	



Population (U.S. Census 2010): 43



To request information from this document in an alternative format, call 651-366-4718 or 1-800-657-3774 (Greater Minnesota); 711 or 1-800-627-3529 (Minnesota Relay). You may also send an e-mail to ADAREquest.dot@state.mn.us. (Please request at least one week in advance.)