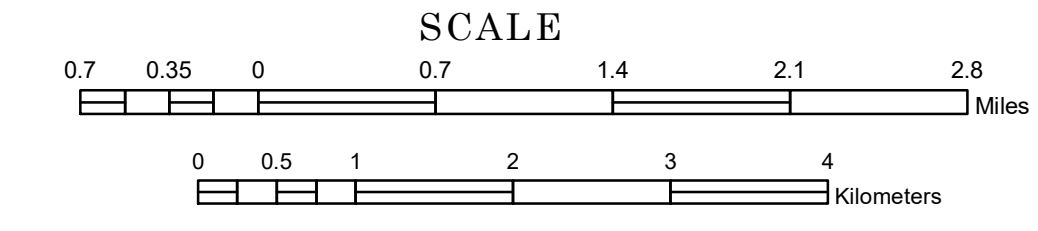


# TOWNSHIP OF LUTSEN

PREPARED BY THE  
MINNESOTA DEPARTMENT OF TRANSPORTATION  
OFFICE OF TRANSPORTATION SYSTEM MANAGEMENT

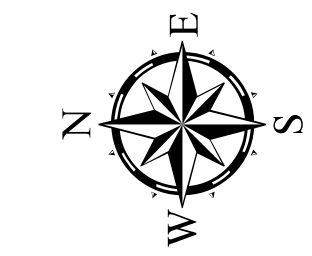
IN COOPERATION WITH  
U.S. DEPARTMENT OF TRANSPORTATION  
FEDERAL HIGHWAY ADMINISTRATION



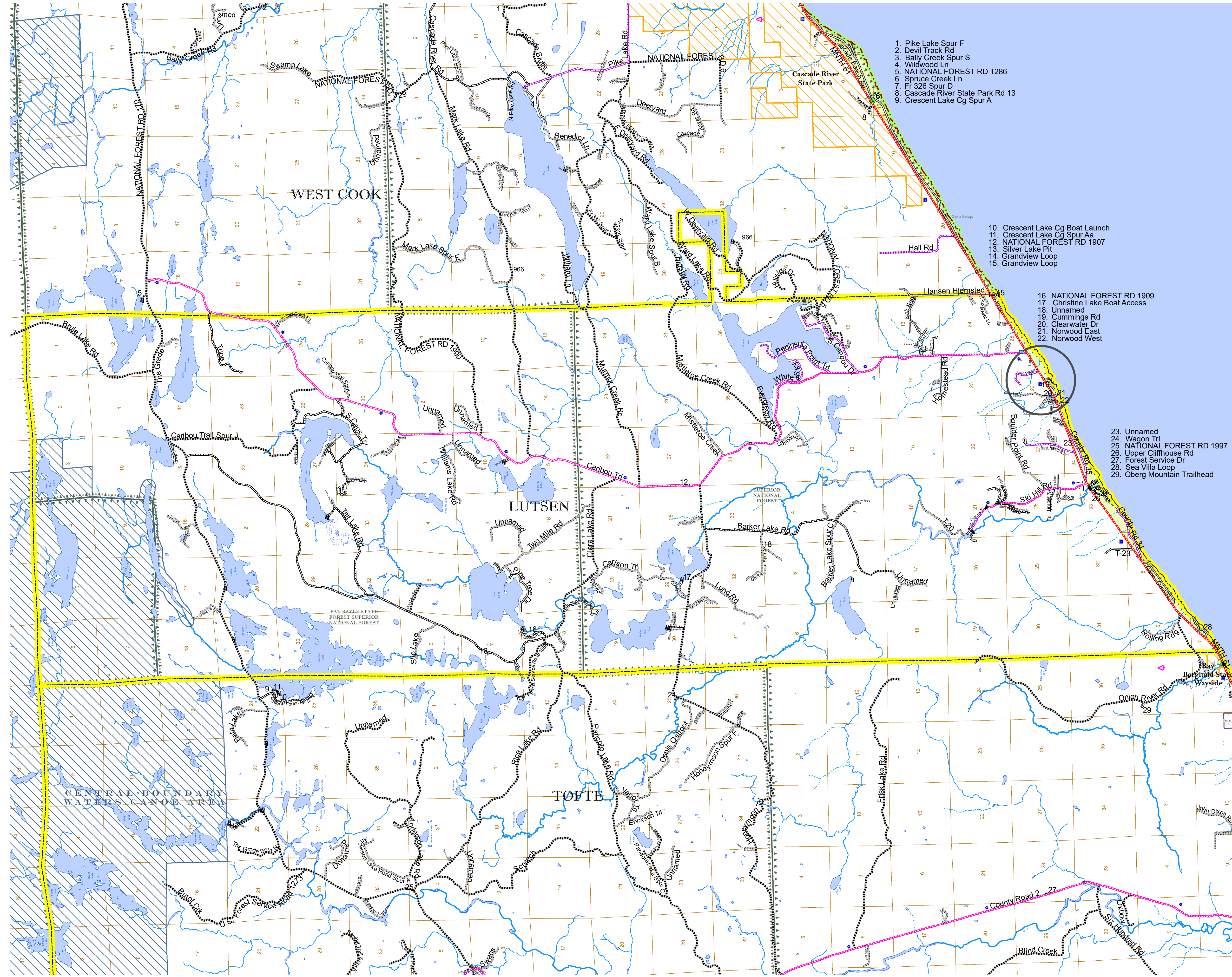
1 in = 4,000 ft

2023

Projection:  
Transverse Mercator  
NAD 1986  
UTM Zone 15



North American Datum  
of 1986



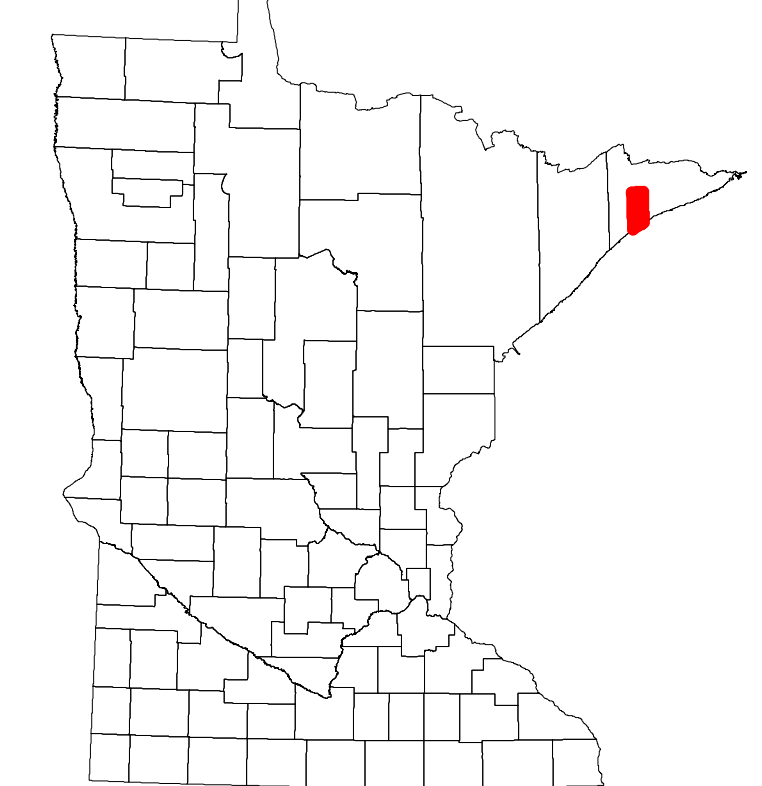
1. Pike Lake Spur F
2. Devil Track Rd
3. Bally Creek Spur S
4. Wildwood Ln
5. NATIONAL FOREST RD 1286
6. Spruce Creek Ln
7. Fr 326 Spur D
8. Cascade River State Park Rd 13
9. Crescent Lake Cg Spur A

10. Crescent Lake Cg Boat Launch
11. Crescent Lake Cg Spur Aa
12. NATIONAL FOREST RD 1907
13. Silver Lake Pit
14. Grandview Loop
15. Grandview Loop

16. NATIONAL FOREST RD 1909
17. Christine Lake Boat Access
18. Unnamed
19. Cummings Rd
20. Clearwater Dr
21. Norwood East
22. Norwood West

23. Unnamed
24. Wagon Trl
25. NATIONAL FOREST RD 1907
26. Upper Cliffhouse Rd
27. Forest Service Dr
28. Sea Villa Loop
29. Oberg Mountain Trailhead

ROAD AND ROADWAY FEATURES		AVIATION FEATURES	
INTERSTATE	[Symbol]	COMMERCIAL AIRPORT	[Symbol]
US HIGHWAY	[Symbol]	GENERAL AIRPORT	[Symbol]
MN HIGHWAY	[Symbol]	AIRSTRIP	[Symbol]
COUNTY STATE AID HIGHWAY	[Symbol]	SEAPLANE	[Symbol]
COUNTY ROAD	[Symbol]	AIRPORT RUNWAY	[Symbol]
TOWNSHIP ROAD	[Symbol]		
UNORGANIZED TERRITORY ROAD	[Symbol]		
OTHER ROADS	[Symbol]		
Municipal	[Symbol]		
Private	[Symbol]		
National Monument	[Symbol]		
State Forest	[Symbol]		
National Park	[Symbol]		
National Wildlife	[Symbol]		
State Game	[Symbol]		
Military	[Symbol]		
National Forest	[Symbol]		
State Park	[Symbol]		
Preserve	[Symbol]		
RAILROAD AND RAILWAY FEATURES		BOUNDARY FEATURES	
EMPIRE BUILDER STATION (AMTRAK)	[Symbol]	TRIBAL LAND	[Symbol]
NORTHSTAR STATION (COMMETEK)	[Symbol]	STATE OF MINNESOTA	[Symbol]
		COUNTY	[Symbol]
		MUNICIPALITY	[Symbol]
		UNORGANIZED TERRITORY	[Symbol]
		FEDERAL ADJUSTED URBAN AREA (2014)	[Symbol]
		CIVIL TOWNSHIP	[Symbol]
		CONGRESSIONAL TOWNSHIP	[Symbol]
		SECTION	[Symbol]
		MILITARY	[Symbol]
		VOYAGEURS NATIONAL PARK	[Symbol]
		BOUNDARY WATERS CANOE AREA WILDERNESS	[Symbol]
		STATE PARK	[Symbol]
		REGIONAL PARK	[Symbol]
		NATIONAL FOREST	[Symbol]
		NATIONAL AND STATE FOREST	[Symbol]
		STATE FOREST	[Symbol]
		NATIONAL TRAIL	[Symbol]
		WILDLIFE REFUGE AREA	[Symbol]
		WILDLIFE MANAGEMENT AREA	[Symbol]
		HYDROLOGIC FEATURES	
		RIVER OR STREAM (PERMANENT)	[Symbol]
		LAKE, POND OR RESERVOIR	[Symbol]
		STREAM (INTERMITTENT)	[Symbol]
		DRAINAGE DITCH	[Symbol]
		WETLAND	[Symbol]
		ISLAND OR LAND	[Symbol]
		REGIONAL WATERSHED	[Symbol]



Population (U.S. Census 2010): 415

To request information from this document in an alternative format, call 651-366-4718 or 1-800-657-3774 (Greater Minnesota); 711 or 1-800-627-3529 (Minnesota Relay). You may also send an e-mail to ADARquest.dot@state.mn.us. (Please request at least one week in advance.)