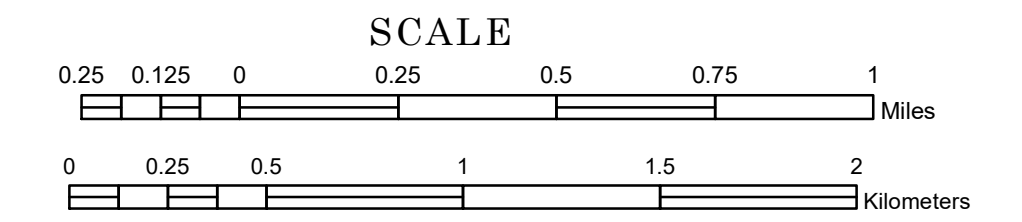


# TOWNSHIP OF DAGGETT BROOK

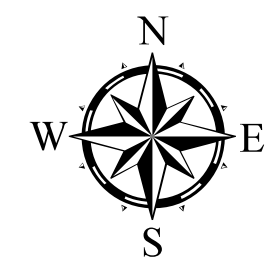
PREPARED BY THE  
MINNESOTA DEPARTMENT OF TRANSPORTATION  
OFFICE OF TRANSPORTATION SYSTEM MANAGEMENT

IN COOPERATION WITH  
U.S. DEPARTMENT OF TRANSPORTATION  
FEDERAL HIGHWAY ADMINISTRATION



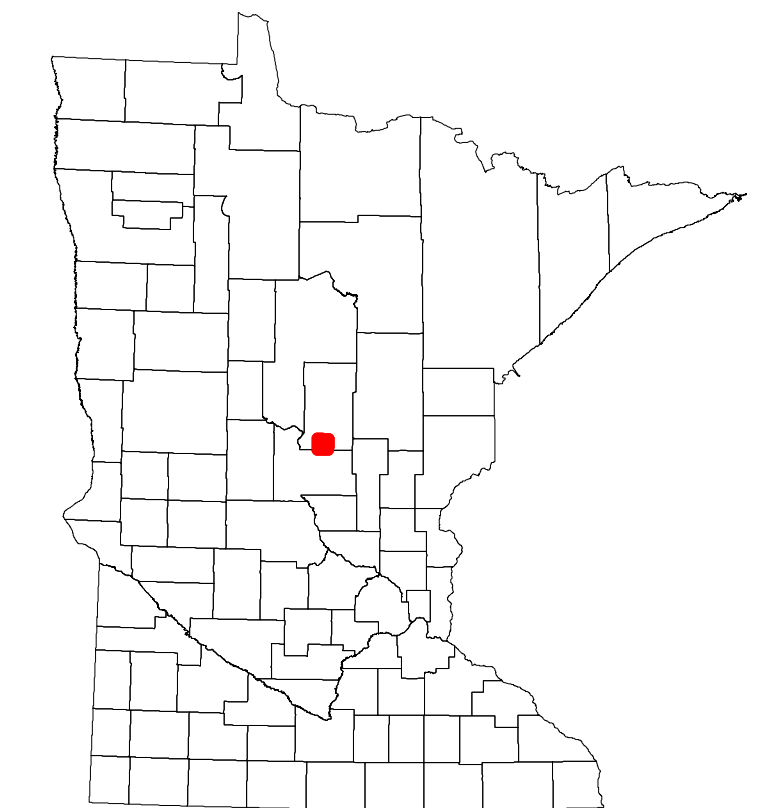
2023

Projection:  
Transverse Mercator  
NAD 1986  
UTM Zone 15

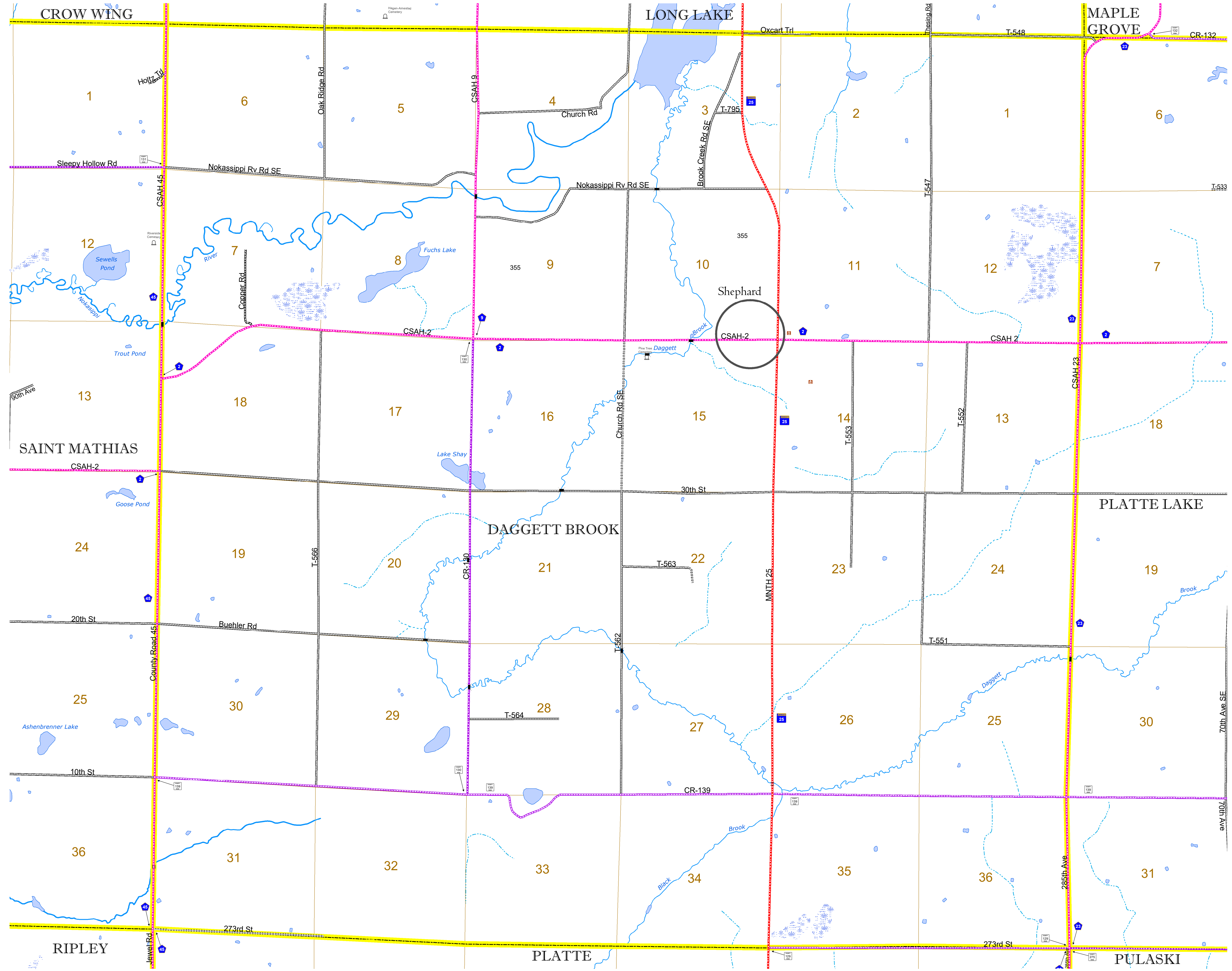


North American Datum  
of 1986

ROAD AND ROADWAY FEATURES		BOUNDARY FEATURES	
INTERSTATE	CONCRETE	TRIBAL LAND	STATE OF MINNESOTA
US HIGHWAY	BITUMINOUS	COUNTY	MUNICIPALITY
MN HIGHWAY	GRAVEL	UNINCORPORATED TOWNSHIP	CIVIL TOWNSHIP
COUNTY STATE AID HIGHWAY	DIRT/UNIMPROVED	CONGRESSIONAL TOWNSHIP	SECTION
COUNTY ROAD	OTHER	MILITARY	VOYAGEURS NATIONAL PARK
TOWNSHIP ROAD	UNKNOWN	UNINCORPORATED COMMUNITY	BOUNDARY WATERS CANOE AREA WILDERNESS
UNORGANIZED TERRITORY ROAD			STATE PARK
OTHER ROADS			REGIONAL PARK
Municipal	RAMP OR CONNECTOR		NATIONAL FOREST
Private	INTERSTATE EXIT		NATIONAL AND STATE FOREST
National Monument	AVIATION FEATURES		STATE FOREST
National Wildlife Refuge	COMMERCIAL AIRPORT		NATIONAL TRAIL
State Park	GENERAL AIRPORT		WILDLIFE REFUGE AREA
Preserve	AIRSTRIP		WILDLIFE MANAGEMENT AREA
	SEAPLANE		HYDROLOGIC FEATURES
	AIRPORT RUNWAY		RIVER OR STREAM (PERMANENT)
			LAKE, POND OR RESERVOIR
			STREAM (INTERMITTENT)
			DRAINAGE DITCH
			WETLAND
			ISLAND OR LAND
			REGIONAL WATERSHED



Population (U.S. Census 2010): 554



To request information from this document in an alternative format, call 651-366-4718 or 1-800-657-3774 (Greater Minnesota); 711 or 1-800-627-3529 (Minnesota Relay). You may also send an e-mail to ADarequest.dot@state.mn.us. (Please request at least one week in advance.)