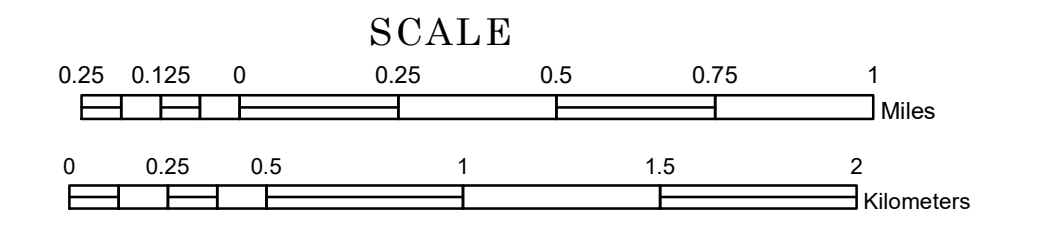


TOWNSHIP OF WOLFORD

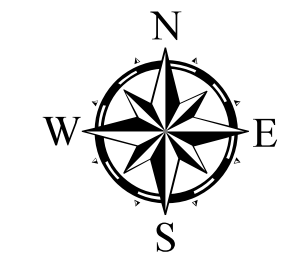
PREPARED BY THE
MINNESOTA DEPARTMENT OF TRANSPORTATION
OFFICE OF TRANSPORTATION SYSTEM MANAGEMENT

IN COOPERATION WITH
U.S. DEPARTMENT OF TRANSPORTATION
FEDERAL HIGHWAY ADMINISTRATION

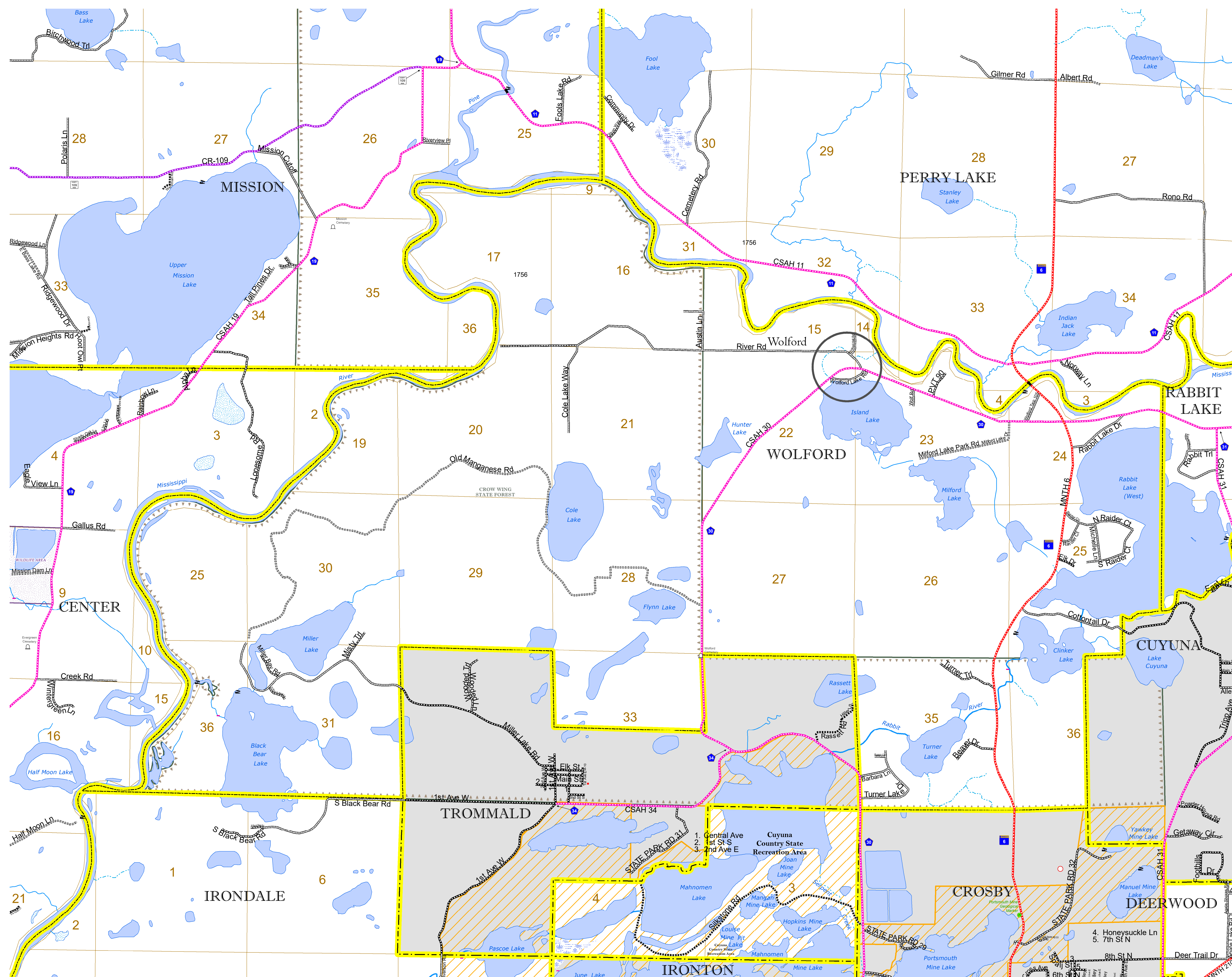


1 in = 1,600 ft
2023

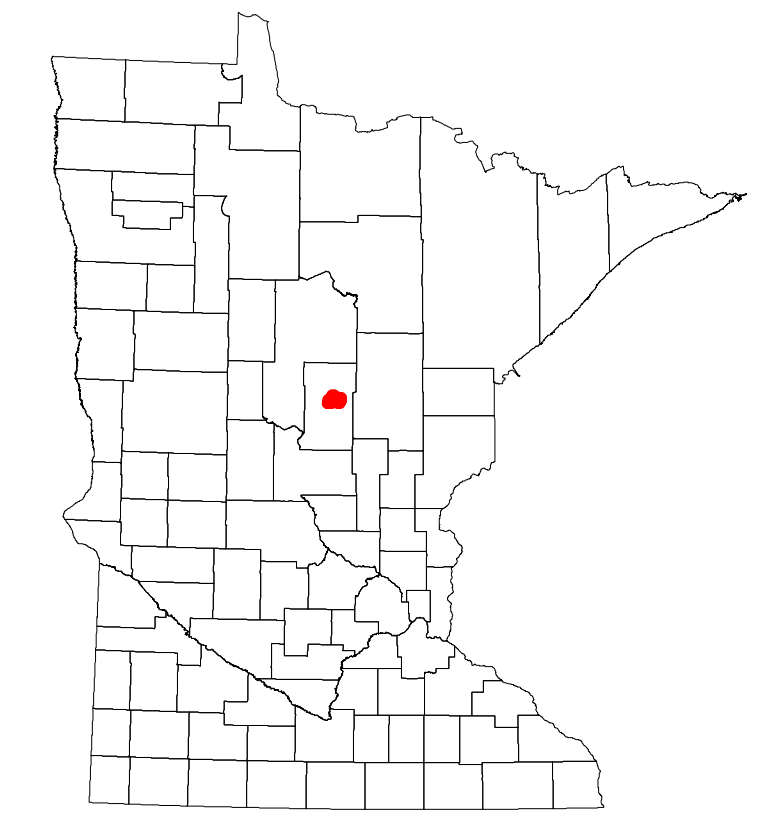
Projection:
Transverse Mercator
NAD 1986
UTM Zone 15



North American Datum
of 1986



- ROAD AND ROADWAY FEATURES**
- INTERSTATE: Solid black line with double red lines.
- US HIGHWAY: Solid black line with red and white dashed lines.
- MINNESOTA HIGHWAY: Solid black line with blue and white dashed lines.
- COUNTY STATE AID HIGHWAY: Solid black line with blue dashed lines.
- COUNTY ROAD: Solid black line with blue dashed lines.
- TOWNSHIP ROAD: Solid black line with blue dashed lines.
- UNORGANIZED TERRITORY ROAD: Solid black line with blue dashed lines.
- OTHER ROADS: Municipal, Private, National Monuments, State Forest, National Wildlife Refuge, State Game Preserve, National Forest, State Park.
- RAILROAD AND RAILWAY FEATURES
- EMPIRE BUILDER STATION (AMTRAK): Black square with white letters.
- NORTHSTAR STATION (COMMUTER): Blue square with white letters.
- LIGHT RAIL: Blue line with black cross-ticks.
- BLUE LINE: Solid blue line.
- GREEN LINE: Solid green line.
- LONG BRIDGE (200' OR GREATER SPAN): Black line with two parallel lines.
- MAJOR BRIDGE (20' TO 200' SPAN): Black line with a single parallel line.
- MINOR BRIDGE (5' TO 20' SPAN): Black line with a double parallel line.
- DAM: Black line with a V-shape.
- LOCK AND DAM: Black line with a rectangle and a V-shape.
- CITY CENTERS
- STATE CAPITAL: Black circle with a white center.
- COUNTY SEAT: Black circle with a white center.
- CITY CENTER: Black circle with a white center.
- UNINCORPORATED COMMUNITY: Black circle with a white center.
- PUBLIC SERVICE FEATURES
- MINNDOT OFFICE: Black rectangle.
- MINNDOT TRUCK STATION: Black rectangle.
- HIGHWAY PATROL DISTRICT OFFICE: Black rectangle.
- STATE TRAVEL INFORMATION CENTER: Black rectangle.
- REST AREA (FULL SERVICE): Black rectangle with a white circle.
- REST AREA (VAULT TOILET): Black rectangle with a white circle.
- WAYSIDE (VAULT OR PIT TOILET): Black rectangle with a white circle.
- PARK AND RIDE LOT: Black rectangle with a white circle.
- PORT OF ENTRY: Black rectangle with a white circle.
- PUBLIC ACCESS POINT: Black rectangle with a white circle.
- MINN STATE COLLEGE AND UNIVERSITY SYSTEM (MNSCU): Black rectangle with a white circle.
- UNIVERSITY OF MN SYSTEM: Black rectangle with a white circle.
- FAIRGROUNDS: Black rectangle with a white circle.
- CULTURAL FEATURES
- STATE HISTORICAL MARKER: Black square with a white circle.
- HISTORIC DISTRICT: Black square with a white circle.
- HISTORIC SITE: Black square with a white circle.
- MONUMENT: Black square with a white circle.
- CONCRETE: Solid black line.
- BITUMINOUS: Dashed black line.
- GRAVEL: Dotted black line.
- DIRT/UNIMPROVED: Solid black line.
- OTHER: Solid black line.
- UNKNOWN: Solid black line.
- RAMP OR CONNECTOR: Solid black line with a triangle.
- INTERSTATE EXIT: Solid black line with a triangle.
- GREAT RIVER ROAD: Solid black line with a triangle.
- AVIATION FEATURES
- COMMERCIAL AIRPORT: Black rectangle with a white circle.
- GENERAL AIRPORT: Black rectangle with a white circle.
- AIRSTRIP: Black rectangle with a white circle.
- SEAPLANE: Black rectangle with a white circle.
- AIRPORT RUNWAY: Black rectangle with a white circle.
- BOUNDARY FEATURES
- TRIBAL LAND: Dotted black line.
- STATE OF MINNESOTA: Dotted black line.
- COUNTY: Dotted black line.
- MUNICIPALITY: Dotted black line.
- UNORGANIZED TERRITORY: Dotted black line.
- FEDERAL ADJUSTED URBAN AREA (2014): Dotted black line.
- CIVIL TOWNSHIP: Dotted black line.
- CONGRESSIONAL TOWNSHIP: Dotted black line.
- SECTION: Dotted black line.
- MILITARY: Dotted black line.
- VOYAGERS NATIONAL PARK: Dotted black line.
- BOUNDARY WATERS CANOE AREA WILDERNESS: Dotted black line.
- STATE PARK: Dotted black line.
- REGIONAL PARK: Dotted black line.
- NATIONAL FOREST: Dotted black line.
- NATIONAL AND STATE FOREST: Dotted black line.
- STATE FOREST: Dotted black line.
- NATIONAL TRAIL: Dotted black line.
- WILDLIFE REFUGEE AREA: Dotted black line.
- WILDLIFE MANAGEMENT AREA: Dotted black line.
- HYDROLOGIC FEATURES
- RIVER OR STREAM (PERMANENT): Solid blue line.
- LAKE, POND OR RESERVOIR: Solid blue area.
- STREAM (INTERMITTENT): Dashed blue line.
- DRAINAGE DITCH: Dotted blue line.
- WETLAND: Dotted blue area.
- ISLAND OR LAND: Solid black area.
- REGIONAL WATERSHED: Dotted black line.



To request information from this document in an alternative format, call 651-366-4718 or 1-800-657-3774 (Greater Minnesota); 711 or 1-800-627-3529 (Minnesota Relay). You may also send an e-mail to ADarequest.dot@state.mn.us. (Please request at least one week in advance.)

Population (U.S. Census 2010): 379