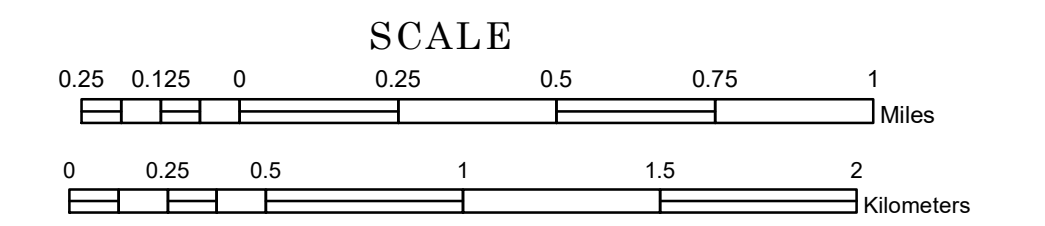


TOWNSHIP OF ELLINGTON

PREPARED BY THE
MINNESOTA DEPARTMENT OF TRANSPORTATION
OFFICE OF TRANSPORTATION SYSTEM MANAGEMENT

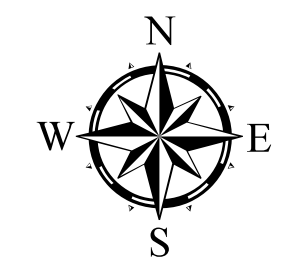
IN COOPERATION WITH
U.S. DEPARTMENT OF TRANSPORTATION
FEDERAL HIGHWAY ADMINISTRATION



1 in = 1,600 ft

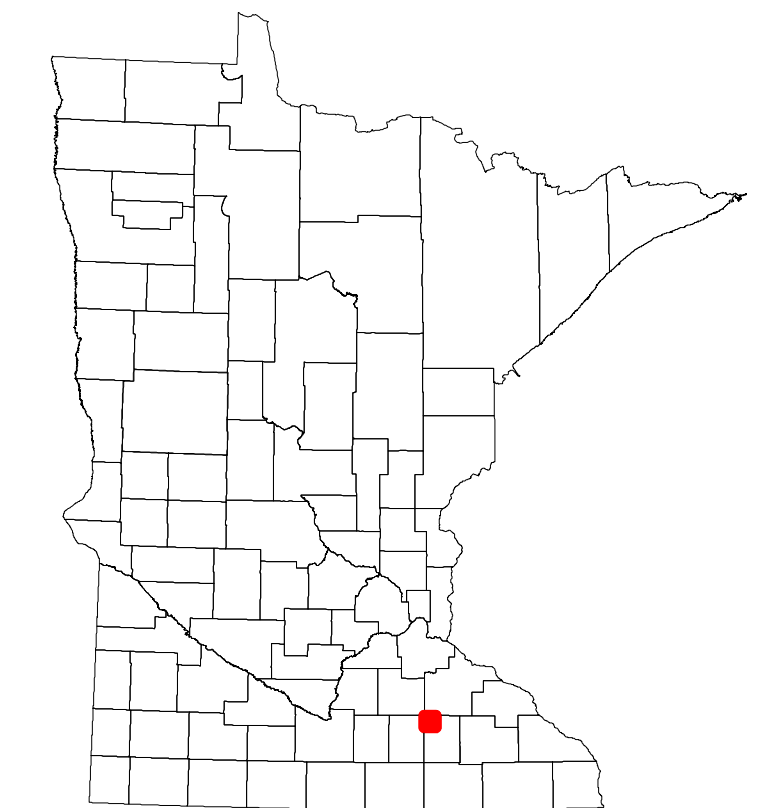
2024

Projection:
Transverse Mercator
NAD 1986
UTM Zone 15

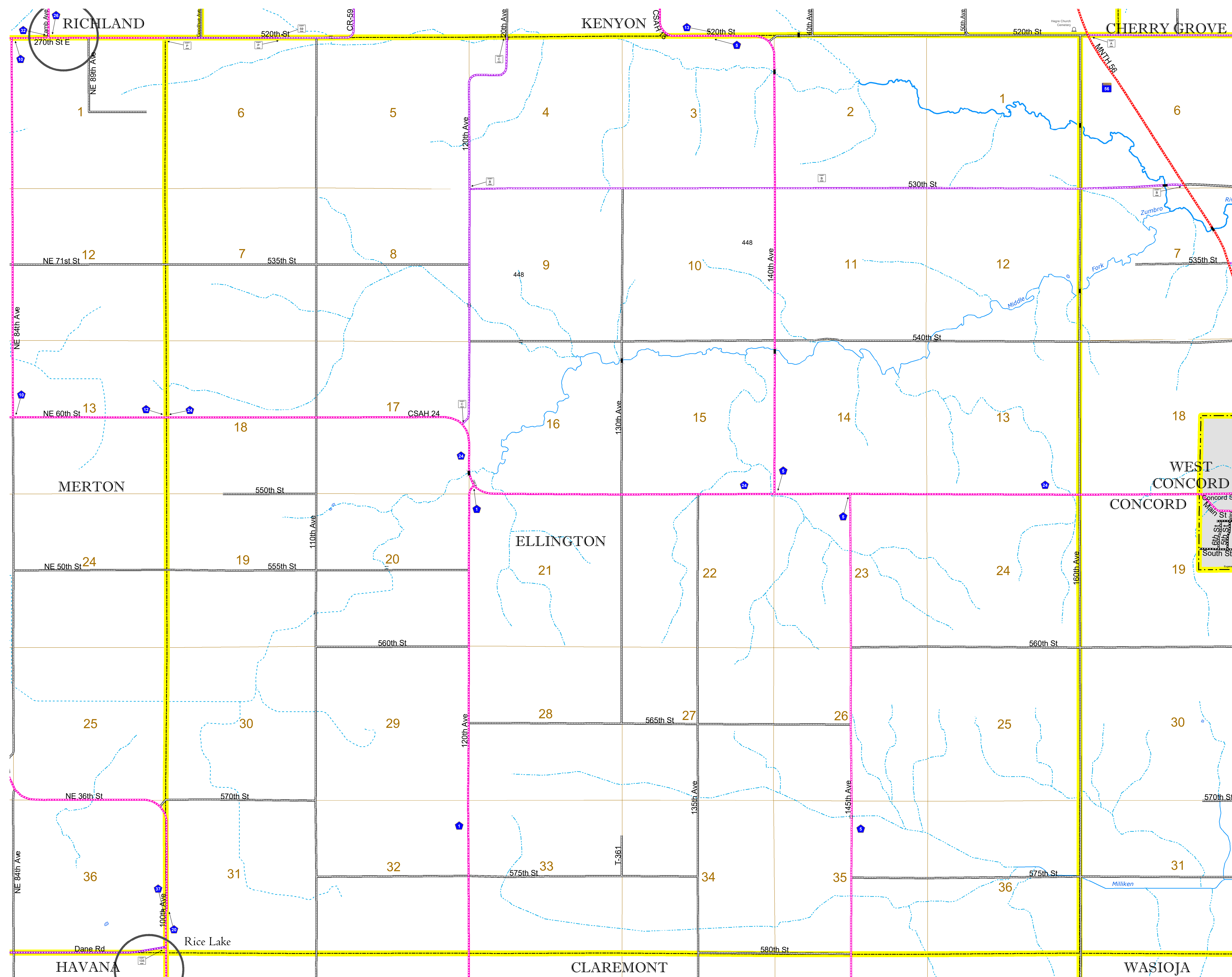


North American Datum
of 1986

ROAD AND ROADWAY FEATURES		AVIATION FEATURES	
INTERSTATE	CONCRETE	COMMERCIAL AIRPORT	GENERAL AIRPORT
US HIGHWAY	BITUMINOUS	AIRSTRIP	SEAPLANE
MN HIGHWAY	GRAVEL	AIRPORT RUNWAY	BOUNDARY FEATURES
COUNTY STATE AID HIGHWAY	DIRT/UNIMPROVED	TRIAL LAND	TRIBAL LAND
COUNTY ROAD	OTHER	STATE OF MINNESOTA	COUNTY
TOWNSHIP ROAD	UNKNOWN	MUNICIPALITY	MUNICIPALITY
UNORGANIZED TERRITORY ROAD		UNORGANIZED TERRITORY	FEDERAL ADJUSTED URBAN AREA (2014)
OTHER ROADS		CIVIL TOWNSHIP	CIVIL TOWNSHIP
Municipal		CONGRESSIONAL TOWNSHIP	CONGRESSIONAL TOWNSHIP
Private		SECTION	MILITARY
National Monument		VOYAGEURS NATIONAL PARK	VOYAGEURS NATIONAL PARK
National Wildlife Refuge		BOUNDRARY NATURAL PARK	BOUNDRARY NATURAL PARK
State Park		STATE PARK	STATE PARK
State Park		REGIONAL PARK	REGIONAL PARK
State Park		NATIONAL FOREST	NATIONAL FOREST
State Park		NATIONAL AND STATE FOREST	NATIONAL AND STATE FOREST
State Park		STATE FOREST	STATE FOREST
State Park		NATIONAL TRAIL	NATIONAL TRAIL
State Park		WILDLIFE REFUGUE AREA	WILDLIFE REFUGUE AREA
State Park		WILDLIFE MANAGEMENT AREA	WILDLIFE MANAGEMENT AREA
State Park		HYDROLOGIC FEATURES	HYDROLOGIC FEATURES
State Park		RIVER OR STREAM (PERMANENT)	RIVER OR STREAM (PERMANENT)
State Park		LAKE, POND OR RESERVOIR	LAKE, POND OR RESERVOIR
State Park		STREAM (INTERMITTENT)	STREAM (INTERMITTENT)
State Park		DRAINAGE DITCH	DRAINAGE DITCH
State Park		WETLAND	WETLAND
State Park		ISLAND OR LAND	ISLAND OR LAND
State Park		REGIONAL WATERSHED	REGIONAL WATERSHED



Population (U.S. Census 2010): 261



To request information from this document in an alternative format, call 651-366-4718 or 1-800-657-3774 (Greater Minnesota); 711 or 1-800-627-3529 (Minnesota Relay). You may also send an e-mail to ADARrequest.dot@state.mn.us. (Please request at least one week in advance.)