

MINNESOTA LAKE

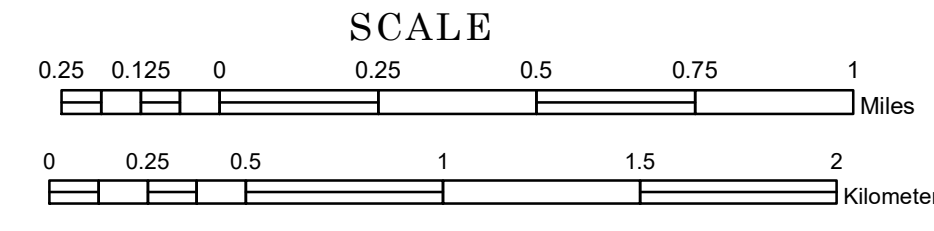
DUNBAR

FREEBORN

TOWNSHIP OF CLARK

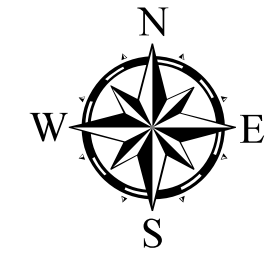
PREPARED BY THE
MINNESOTA DEPARTMENT OF TRANSPORTATION
OFFICE OF TRANSPORTATION SYSTEM MANAGEMENT

IN COOPERATION WITH
U.S. DEPARTMENT OF TRANSPORTATION
FEDERAL HIGHWAY ADMINISTRATION

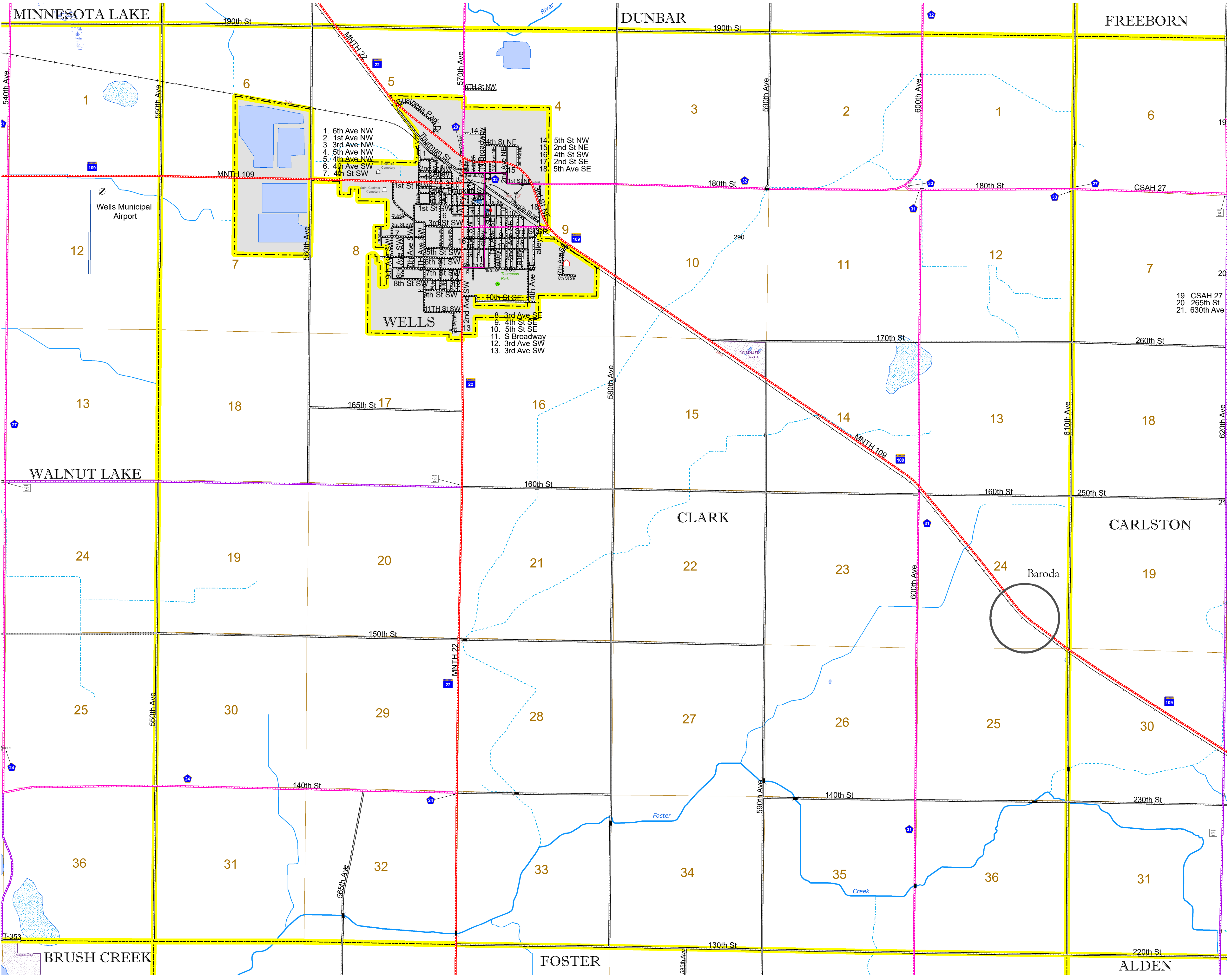


2023

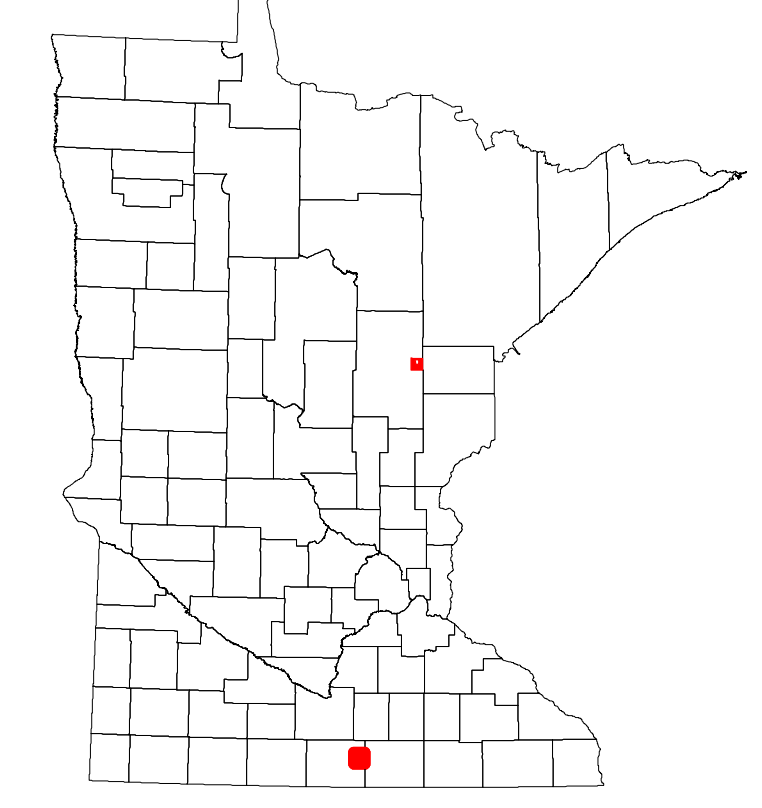
Projection:
Transverse Mercator
NAD 1986
UTM Zone 15



North American Datum
of 1986



ROAD AND ROADWAY FEATURES		
INTERSTATE	CONCRETE	
US HIGHWAY	BITUMINOUS	
MN HIGHWAY	GRAVEL	
COUNTY STATE AID HIGHWAY	DIRT/UNIMPROVED	
COUNTY ROAD	OTHER	
TOWNSHIP ROAD	UNKNOWN	
UNORGANIZED TERRITORY ROAD		
OTHER ROADS	RAMP OR CONNECTOR	
Municipal	INTERSTATE EXIT	
National Service	AVIATION FEATURES	
National Park	GENERAL AIRPORT	
National Wildlife Refuge	AIRSTRIP	
State Park	SEAPLANE	
Preserve	AIRPORT RUNWAY	
RAILROAD AND RAILWAY FEATURES		
EMPIRE BUILDER STATION (AMTRAK)	COMMERCIAL AIRPORT	
NORTHSTAR STATION (COMMUTER)	GENERAL AIRPORT	
	AIRSTRIP	
LIGHT RAIL	SEAPLANE	
BLUE LINE	AIRPORT RUNWAY	
GREEN LINE		
INFRASTRUCTURE FEATURES		
LONG BRIDGE (200' or Greater Span)	TRIBAL LAND	
MAJOR BRIDGE (20' to 200' Span)	STATE OF MINNESOTA	
MINOR BRIDGE (5' to 20' Span)	COUNTY	
DAM	MUNICIPALITY	
LOCK-AND-DAM	UNORGANIZED TERRITORY	
	FEDERAL ADJUSTED URBAN AREA (2014)	
CITY CENTERS		
STATE CAPITAL	CIVIL TOWNSHIP	
COUNTY SEAT	CONGRESSIONAL TOWNSHIP	
CITY CENTER	SECTION	
UNINCORPORATED COMMUNITY	MILITARY	
PUBLIC SERVICE FEATURES		
MNDOT OFFICE	VOYAGEURS NATIONAL PARK	
MNDOT TRUCK STATION	BOUNDARY WATERS CANOE AREA WILDERNESS	
HIGHWAY PATROL DISTRICT OFFICE	STATE PARK	
STATE TRAVEL INFORMATION CENTER	REGIONAL PARK	
REST AREA (Full Service)	NATIONAL FOREST	
REST AREA (Vault Toilet)	NATIONAL AND STATE FOREST	
WAYSIDE (Vault or Potty Toilet)	STATE FOREST	
PARK AND RIDE LOT	NATIONAL TRAIL	
PORT OF ENTRY	WILDLIFE REFUGUE AREA	
PUBLIC ACCESS POINT	WILDLIFE MANAGEMENT AREA	
MN STATE COLLEGE AND UNIVERSITY SYSTEM (MNSCU)	HYDROLOGIC FEATURES	
UNIVERSITY OF MN SYSTEM	RIVER OR STREAM (Perennial)	
FARMGROUNDS	LAKE, POND OR RESERVOIR	
CULTURAL FEATURES		
STATE HISTORICAL MARKER	STREAM (Intermittent)	
HISTORIC DISTRICT	DRAINAGE DITCH	
HISTORIC SITE	WETLAND	
MONUMENT	ISLAND OR LAND	
	REGIONAL WATERSHED	



Population (U.S. Census 2010): 254

To request information from this document in an alternative format, call 651-366-4718 or 1-800-657-3774 (Greater Minnesota); 711 or 1-800-627-3529 (Minnesota Relay). You may also send an e-mail to ADRequest.dot@state.mn.us. (Please request at least one week in advance.)