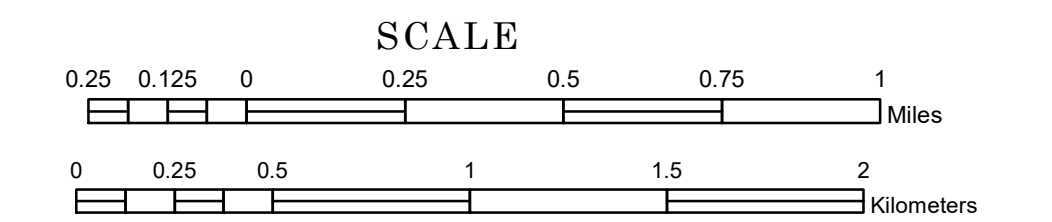


# TOWNSHIP OF PINE ISLAND

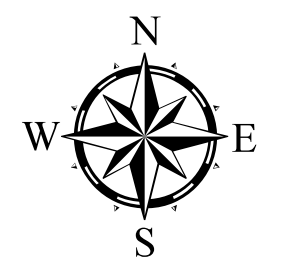
PREPARED BY THE  
MINNESOTA DEPARTMENT OF TRANSPORTATION  
OFFICE OF TRANSPORTATION SYSTEM MANAGEMENT

IN COOPERATION WITH  
U.S. DEPARTMENT OF TRANSPORTATION  
FEDERAL HIGHWAY ADMINISTRATION



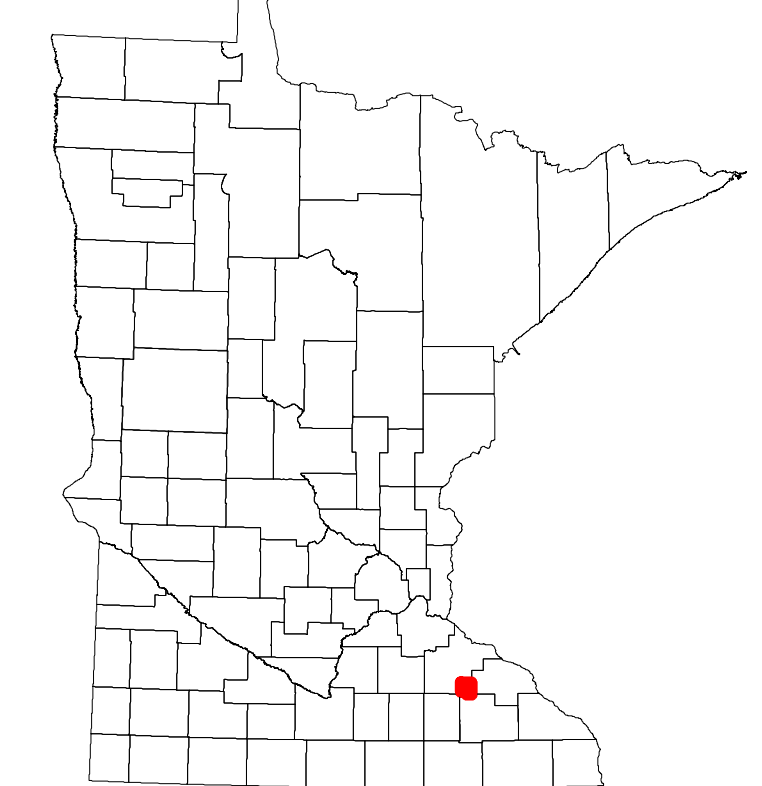
2024

Projection:  
Transverse Mercator  
NAD 1986  
UTM Zone 15

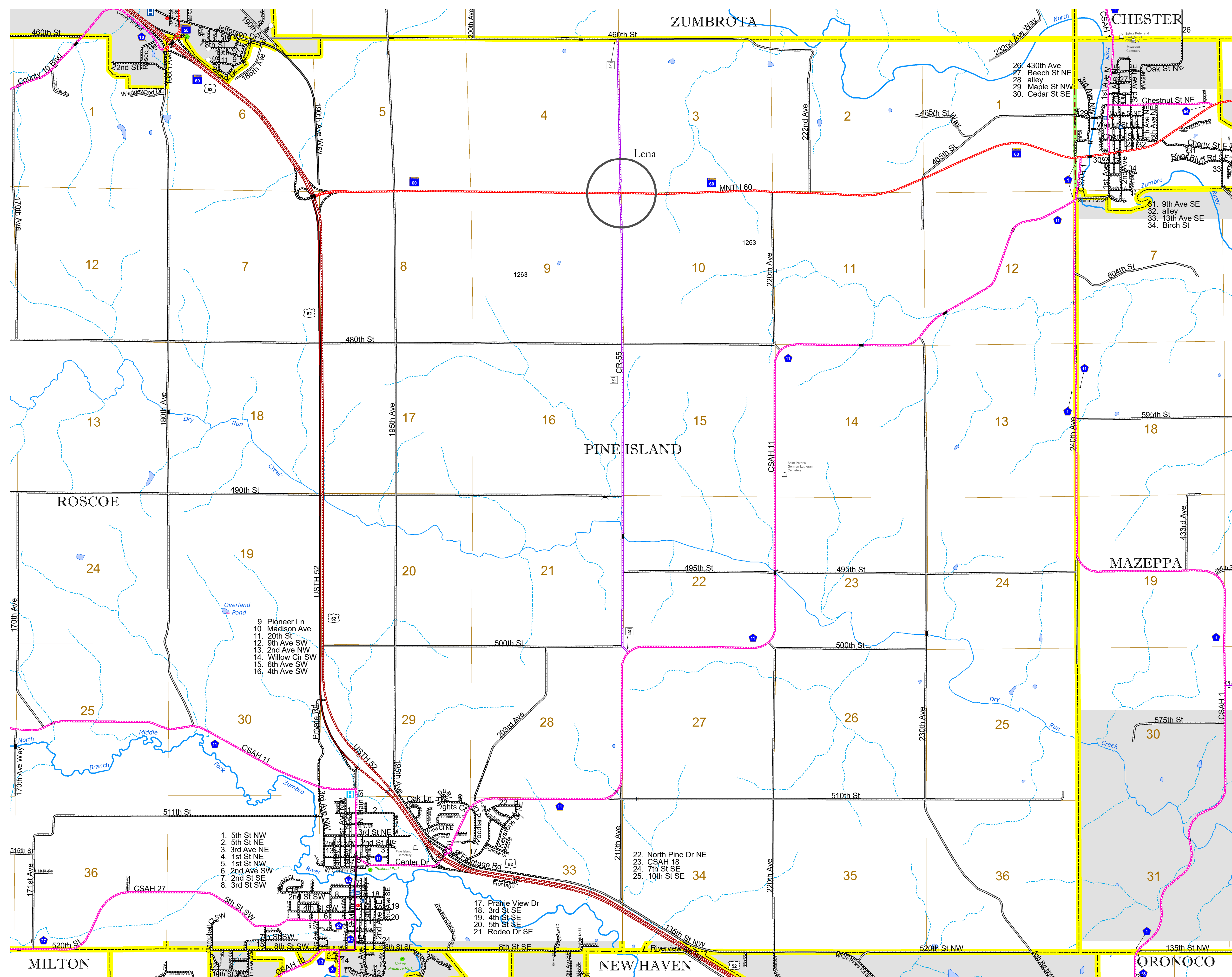


North American Datum  
of 1986

ROAD AND ROADWAY FEATURES		BOUNDARY FEATURES	
INTERSTATE	CONCRETE	TRIBAL LAND	STATE OF MINNESOTA
US HIGHWAY	BITUMINOUS	COUNTY	MUNICIPALITY
MN HIGHWAY	GRAVEL	UNORGANIZED TERRITORY	FEDERAL ADJUSTED URBAN AREA (2014)
COUNTY STATE AID HIGHWAY	DIRT/UNIMPROVED	CIVIL TOWNSHIP	CONGRESSIONAL TOWNSHIP
COUNTY ROAD	OTHER	SECTION	MILITARY
TOWNSHIP ROAD	UNKNOWN	VOYAGEURS NATIONAL PARK	BOUNDARY WATERS CANOE AREA WILDERNESS
UNORGANIZED TERRITORY ROAD		STATE PARK	NATIONAL FOREST
OTHER ROADS		NATIONAL AND STATE FOREST	STATE FOREST
Municipal Private National Monument State Forest	RAMP OR CONNECTOR	WILDLIFE REFUGUE AREA	WILDLIFE MANAGEMENT AREA
Nature Service National Park National Wildlife State Game	INTERSTATE EXIT	HYDROLOGIC FEATURES	RIVER OR STREAM (PERENNIAL)
Muslim National Forest State Park Preserve	GREAT RIVER ROAD	LAKE, POND OR RESERVOIR	STREAM (INTERMITTENT)
RAILROAD AND RAILWAY FEATURES		CITY CENTERS	
EMPIRE BUILDER STATION (AMTRAK)	COMMERCIAL AIRPORT	STATE CAPITAL	COUNTY SEAT
NORTHSTAR STATION (COMPUTER)	GENERAL AIRPORT	CITY CENTER	UNINCORPORATED COMMUNITY
LIGHT RAIL	AIRSTRIP	PUBLIC SERVICE FEATURES	
BLUE LINE	SEAPLANE	MNDOT OFFICE	MNDOT TRUCK STATION
GREEN LINE	AIRPORT RUNWAY	HIGHWAY PATROL DISTRICT OFFICE	STATE TRAVEL INFORMATION CENTER
INFRASTRUCTURE FEATURES		REST AREA (Full Service)	REST AREA (Vault Toilet)
LONG BRIDGE (200' or Greater Span)	TRIAL LAND	WAYSIDE (Vault or Pit Toilet)	PARK AND RIDE LOT
MAJOR BRIDGE (20' to 200' Span)	STATE OF MINNESOTA	PORT OF ENTRY	PUBLIC ACCESS POINT
MINOR BRIDGE (5' to 20' Span)	COUNTY	MN STATE COLLEGE AND UNIVERSITY SYSTEM (MNSCU)	UNIVERSITY OF MN SYSTEM
DAM	MUNICIPALITY	FAIRGROUNDS	CULTURAL FEATURES
LOCK AND DAM	UNORGANIZED TERRITORY	STATE HISTORICAL MARKER	HISTORIC DISTRICT
STATE CAPITAL	CONGRESSIONAL TOWNSHIP	HISTORIC SITE	MONUMENT
CITY CENTER	SECTION	WETLAND	ISLAND OR LAND
COUNTY SEAT	MILITARY	DRAINAGE DITCH	REGIONAL WATERSHED
UNINCORPORATED COMMUNITY	VOYAGEURS NATIONAL PARK		



Population (U.S. Census 2010): 551



To request information from this document in an alternative format, call 651-366-4718 or 1-800-657-3774 (Greater Minnesota); 711 or 1-800-627-3529 (Minnesota Relay). You may also send an e-mail to ADARquest.dot@state.mn.us. (Please request at least one week in advance.)