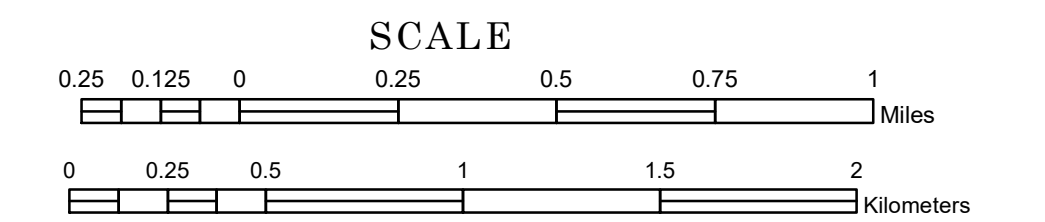


TOWNSHIP OF POMME DE TERRE

PREPARED BY THE
MINNESOTA DEPARTMENT OF TRANSPORTATION
OFFICE OF TRANSPORTATION SYSTEM MANAGEMENT

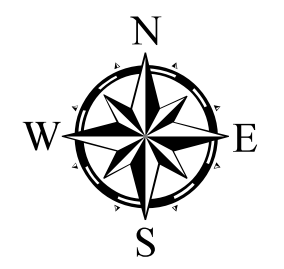
IN COOPERATION WITH
U.S. DEPARTMENT OF TRANSPORTATION
FEDERAL HIGHWAY ADMINISTRATION



1 in = 1,600 ft

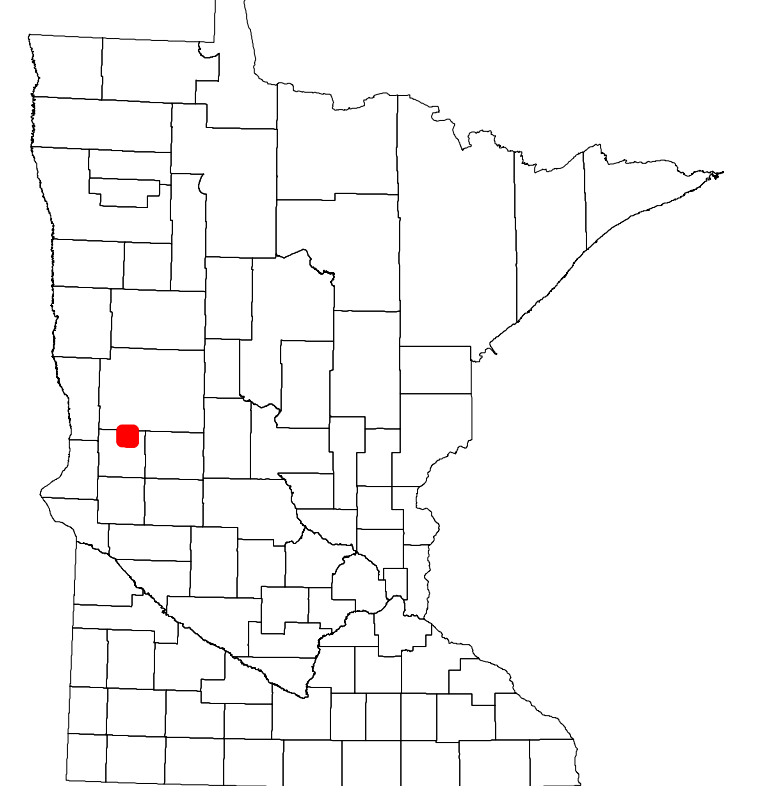
2023

Projection:
Transverse Mercator
NAD 1986
UTM Zone 15

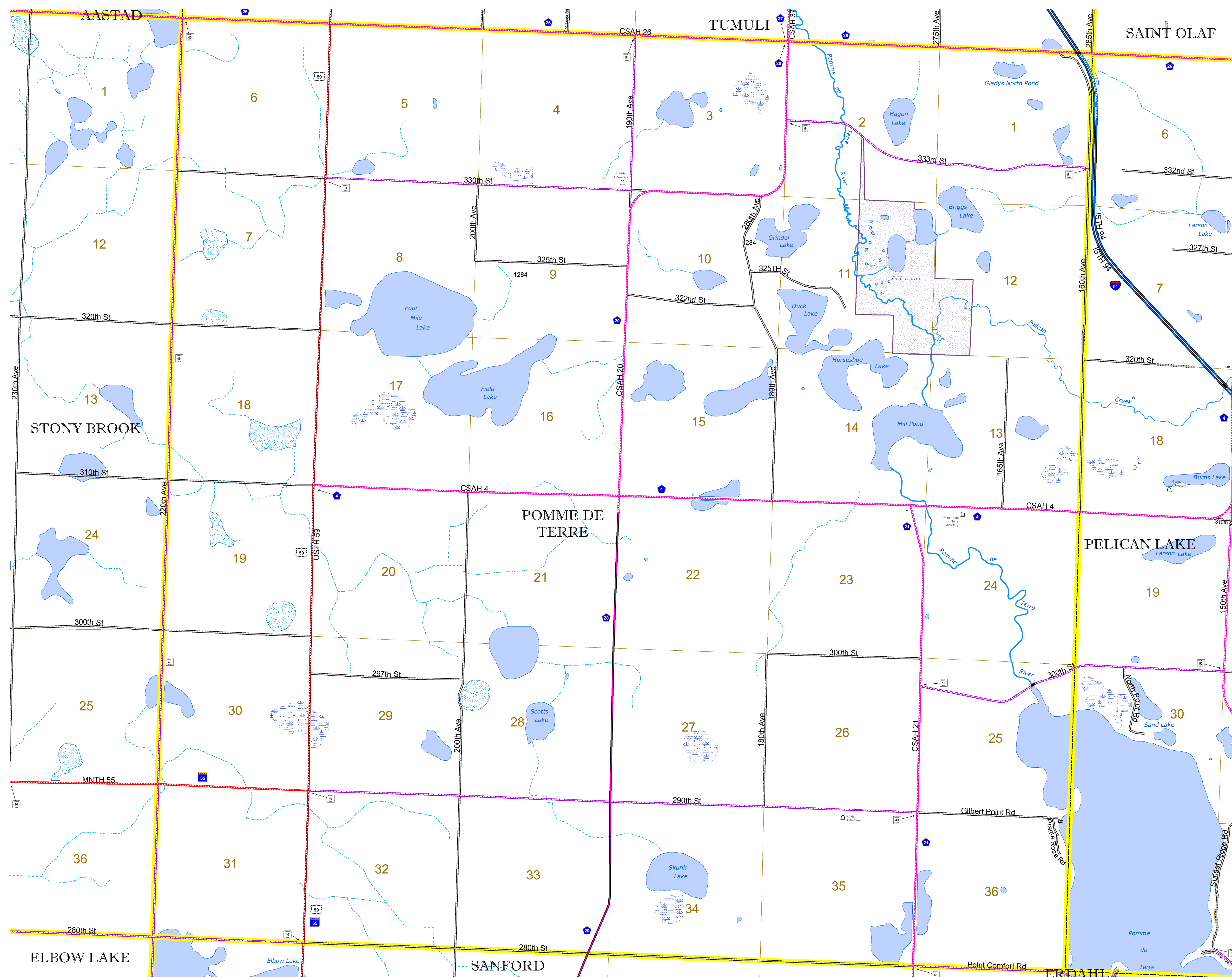


North American Datum
of 1986

ROAD AND ROADWAY FEATURES		AVIATION FEATURES	
INTERSTATE	CONCRETE	COMMERCIAL AIRPORT	GENERAL AIRPORT
US HIGHWAY	BITUMINOUS	AIRSTRIP	SEAPLANE
MN HIGHWAY	GRAVEL	AIRPORT RUNWAY	AIRPORT RUNWAY
COUNTY STATE AID HIGHWAY	DIRT/UNIMPROVED		
COUNTY ROAD	OTHER		
TOWNSHIP ROAD	UNKNOWN		
UNORGANIZED TERRITORY ROAD			
OTHER ROADS			
Municipal	RAMP OR CONNECTOR		
Private	INTERSTATE EXIT		
National Monument	GREAT RIVER ROAD		
Nature Service			
Military			
RAILROAD AND RAILWAY FEATURES		BOUNDARY FEATURES	
EMPIRE BUILDER STATION (AMTRAK)	TRIBAL LAND	STATE OF MINNESOTA	COUNTY
NORTHSTAR STATION (COMMUTER)	STATE OF MINNESOTA	COUNTY	MUNICIPALITY
LIGHT RAIL	UNORGANIZED TERRITORY	UNORGANIZED TERRITORY	FEDERAL ADJUSTED URBAN AREA (2014)
BLUE LINE	FEDERAL ADJUSTED URBAN AREA (2014)	CIVIL TOWNSHIP	CONGRESSIONAL TOWNSHIP
GREEN LINE	CIVIL TOWNSHIP	CIVIL TOWNSHIP	CONGRESSIONAL TOWNSHIP
INFRASTRUCTURE FEATURES		CITY CENTERS	
LONG BRIDGE (200' OR GREATER SPAN)	STATE CAPITAL	COUNTY SEAT	CITY CENTER
MAJOR BRIDGE (20' TO 200' SPAN)	UNINCORPORATED COMMUNITY		
MINOR BRIDGE (5' TO 20' SPAN)			
DAM			
LOCK AND DAM			
PUBLIC SERVICE FEATURES		HYDROLOGIC FEATURES	
MNDOT OFFICE	WILDLIFE REFUGES	WILDLIFE REFUGES	WILDLIFE REFUGES
MNDOT TRUCK STATION	WILDLIFE REFUGES	WILDLIFE REFUGES	WILDLIFE REFUGES
HIGHWAY PATROL DISTRICT OFFICE	WILDLIFE REFUGES	WILDLIFE REFUGES	WILDLIFE REFUGES
STATE TRAVEL INFORMATION CENTER	WILDLIFE REFUGES	WILDLIFE REFUGES	WILDLIFE REFUGES
REST AREA (FULL SERVICE)	WILDLIFE REFUGES	WILDLIFE REFUGES	WILDLIFE REFUGES
REST AREA (VAULT TOILET)	WILDLIFE REFUGES	WILDLIFE REFUGES	WILDLIFE REFUGES
WAYSIDE (VAULT OR PIT TOILET)	WILDLIFE REFUGES	WILDLIFE REFUGES	WILDLIFE REFUGES
PARK AND RIDE LOT	WILDLIFE REFUGES	WILDLIFE REFUGES	WILDLIFE REFUGES
PORT OF ENTRY	WILDLIFE REFUGES	WILDLIFE REFUGES	WILDLIFE REFUGES
PUBLIC ACCESS POINT	WILDLIFE REFUGES	WILDLIFE REFUGES	WILDLIFE REFUGES
MN STATE COLLEGE AND UNIVERSITY SYSTEM (MNSCU)	WILDLIFE REFUGES	WILDLIFE REFUGES	WILDLIFE REFUGES
UNIVERSITY OF MN SYSTEM	WILDLIFE REFUGES	WILDLIFE REFUGES	WILDLIFE REFUGES
FARMGROUNDS	WILDLIFE REFUGES	WILDLIFE REFUGES	WILDLIFE REFUGES
CULTURAL FEATURES		HYDROLOGIC FEATURES	
STATE HISTORICAL MARKER	WILDLIFE REFUGES	WILDLIFE REFUGES	WILDLIFE REFUGES
HISTORIC DISTRICT	WILDLIFE REFUGES	WILDLIFE REFUGES	WILDLIFE REFUGES
HISTORIC SITE	WILDLIFE REFUGES	WILDLIFE REFUGES	WILDLIFE REFUGES
MONUMENT	WILDLIFE REFUGES	WILDLIFE REFUGES	WILDLIFE REFUGES



Population (U.S. Census 2010): 133



To request information from this document in an alternative format, call 651-366-4718 or 1-800-657-3774 (Greater Minnesota); 711 or 1-800-627-3529 (Minnesota Relay). You may also send an e-mail to ADRequest.dot@state.mn.us. (Please request at least one week in advance.)