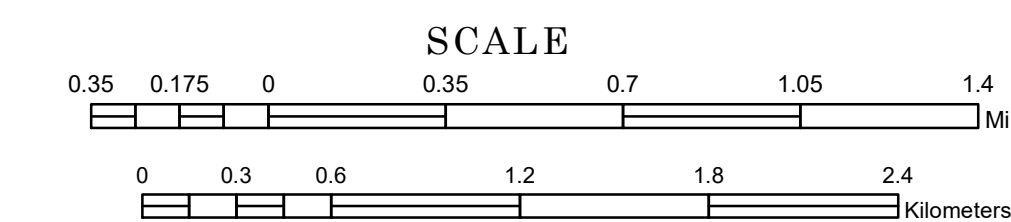


# TOWNSHIP OF ATHENS

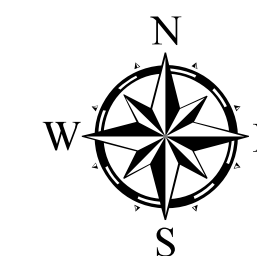
PREPARED BY THE  
MINNESOTA DEPARTMENT OF TRANSPORTATION  
OFFICE OF TRANSPORTATION SYSTEM MANAGEMENT

IN COOPERATION WITH  
U.S. DEPARTMENT OF TRANSPORTATION  
FEDERAL HIGHWAY ADMINISTRATION



1 in = 2,000 ft

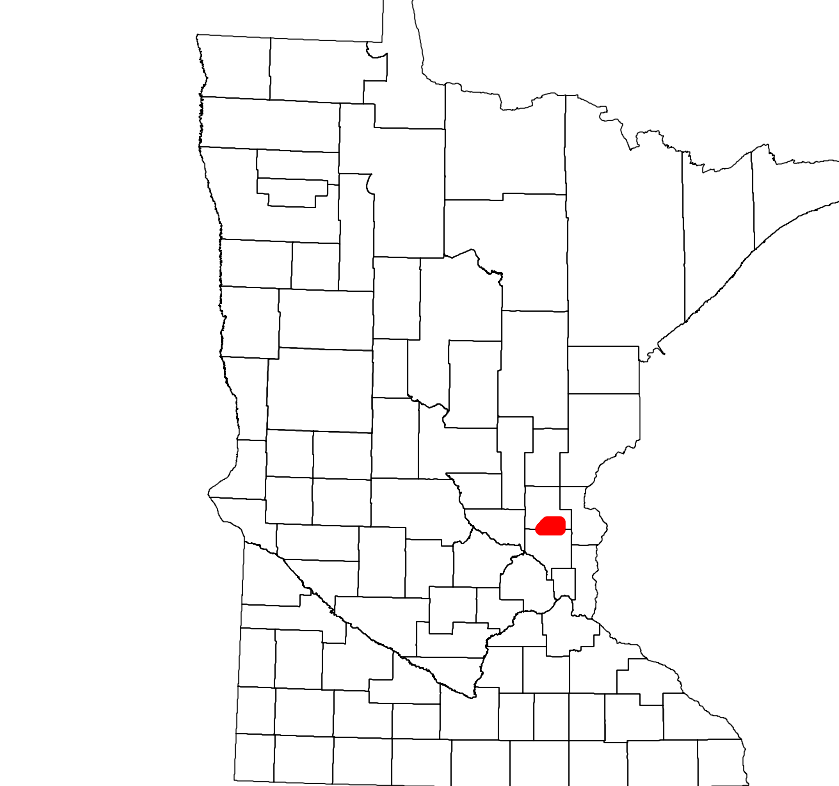
2024



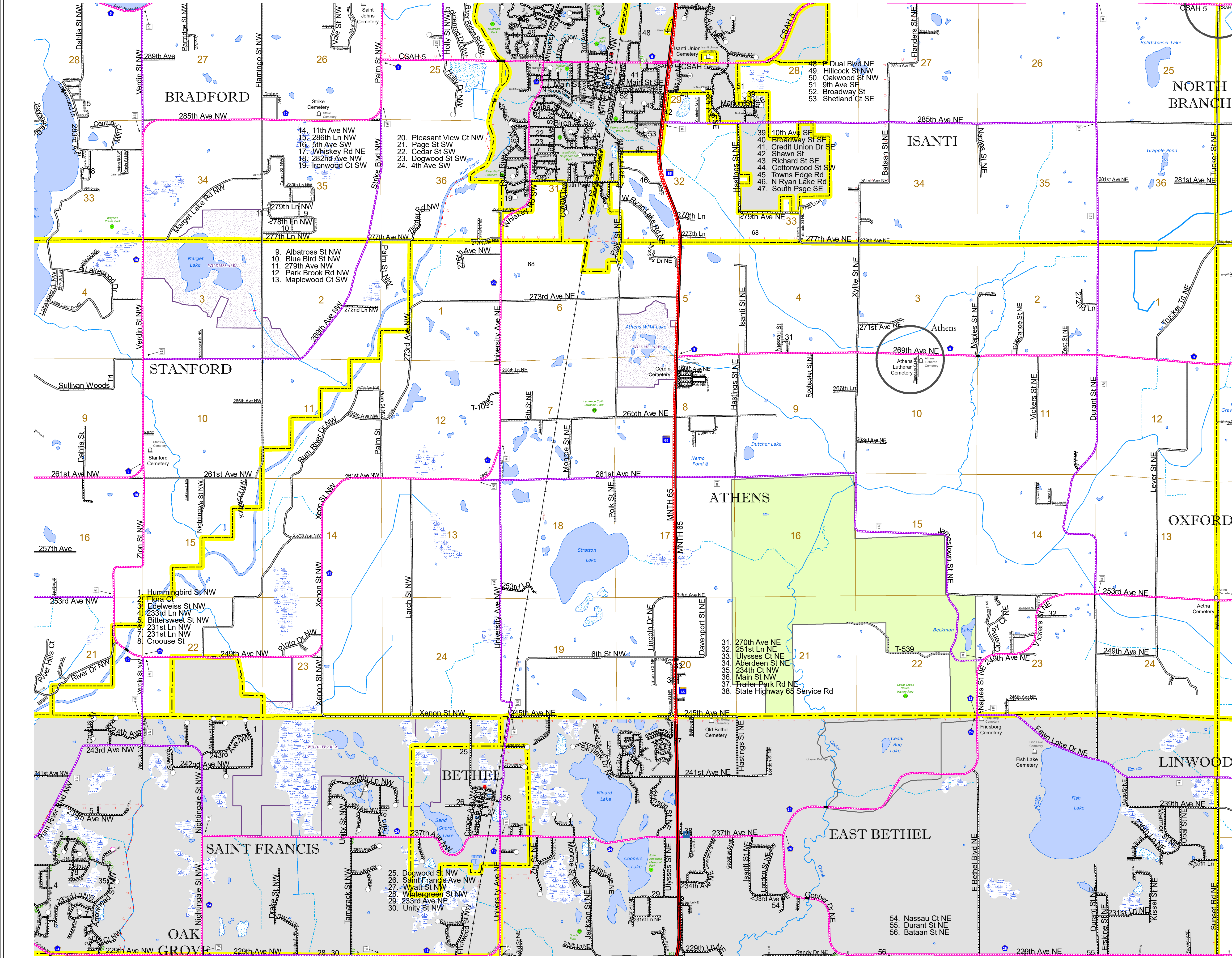
Projection:  
Transverse Mercator  
NAD 1986  
UTM Zone 15

North American Datum  
of 1986

ROAD AND ROADWAY FEATURES		BOUNDARY FEATURES	
INTERSTATE		CONCRETE	
US HIGHWAY		BITUMINOUS	
MN HIGHWAY		GRAVEL	
COUNTY STATE AID HIGHWAY		DIRT/UNIMPROVED	
COUNTY ROAD		OTHER	
TOWNSHIP ROAD		UNKNOWN	
UNORGANIZED TERRITORY ROAD		RAMP OR CONNECTOR	
OTHER ROADS		INTERSTATE EXIT	
Municipal		GREAT RIVER ROAD	
Private		RAILROAD AND RAILWAY FEATURES	
National Monument		EMPIRE BUILDER STATION (AMTRAK)	
State Forest		NORTHSTAR STATION (COMUTER)	
National Park		STATE TRUCK STATION	
National Wildlife Refuge		HIGHWAY PATROL DISTRICT OFFICE	
State Park		STATE TRAVEL INFORMATION CENTER	
Preserve		REST AREA (Full Service)	
		REST AREA (Vault Toilet)	
		WAYSIDE (Vault or Potty Toilet)	
		PARK AND RIDE LOT	
		PORT OF ENTRY	
		PUBLIC ACCESS POINT	
		MN STATE COLLEGE AND UNIVERSITY SYSTEM (MNSCU)	
		UNIVERSITY OF MN SYSTEM	
		FAIRGROUNDS	
		CITY CENTERS	
		STATE CAPITAL	
		COUNTY SEAT	
		CITY CENTER	
		UNINCORPORATED COMMUNITY	
		PUBLIC SERVICE FEATURES	
		MNDOT OFFICE	
		MNDOT TRUCK STATION	
		STATE TRAVEL INFORMATION CENTER	
		REST AREA (Full Service)	
		REST AREA (Vault Toilet)	
		WAYSIDE (Vault or Potty Toilet)	
		PARK AND RIDE LOT	
		PORT OF ENTRY	
		PUBLIC ACCESS POINT	
		MN STATE COLLEGE AND UNIVERSITY SYSTEM (MNSCU)	
		UNIVERSITY OF MN SYSTEM	
		FAIRGROUNDS	
		CULTURAL FEATURES	
		STATE HISTORICAL MARKER	
		HISTORIC DISTRICT	
		HISTORIC SITE	
		MONUMENT	
		TRIBAL LAND	
		STATE OF MINNESOTA	
		COUNTY	
		MUNICIPALITY	
		UNORGANIZED TERRITORY	
		FEDERAL ADJUSTED URBAN AREA (2014)	
		CIVIL TOWNSHIP	
		CONGRESSIONAL TOWNSHIP	
		SECTION	
		MILITARY	
		VOYAGEURS NATIONAL PARK	
		BOUNDARY WATERS CANOE AREA WILDERNESS	
		STATE PARK	
		REGIONAL PARK	
		NATIONAL FOREST	
		NATIONAL AND STATE FOREST	
		STATE FOREST	
		WILDLIFE REFUGE AREA	
		WILDLIFE MANAGEMENT AREA	
		HYDROLOGIC FEATURES	
		RIVER OR STREAM (PERENNIAL)	
		LAKE, POND OR RESERVOIR	
		STREAM (Intermittent)	
		DRAINAGE DITCH	
		WETLAND	
		ISLAND OR LAND	
		REGIONAL WATERSHED	



Population (U.S. Census 2010): 2177



To request information from this document in an alternative format, call 651-366-4718 or 1-800-657-3774 (Greater Minnesota); 711 or 1-800-627-3529 (Minnesota Relay). You may also send an e-mail to ADarequest.dot@state.mn.us. (Please request at least one week in advance.)