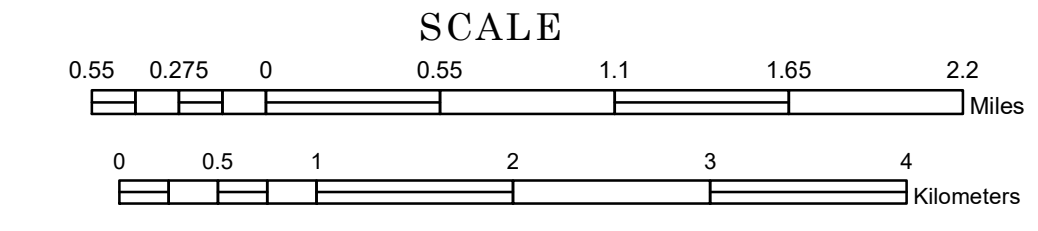


TOWNSHIP OF BALSAM

PREPARED BY THE
MINNESOTA DEPARTMENT OF TRANSPORTATION
OFFICE OF TRANSPORTATION SYSTEM MANAGEMENT

IN COOPERATION WITH
U.S. DEPARTMENT OF TRANSPORTATION
FEDERAL HIGHWAY ADMINISTRATION



1 in = 3,200 ft

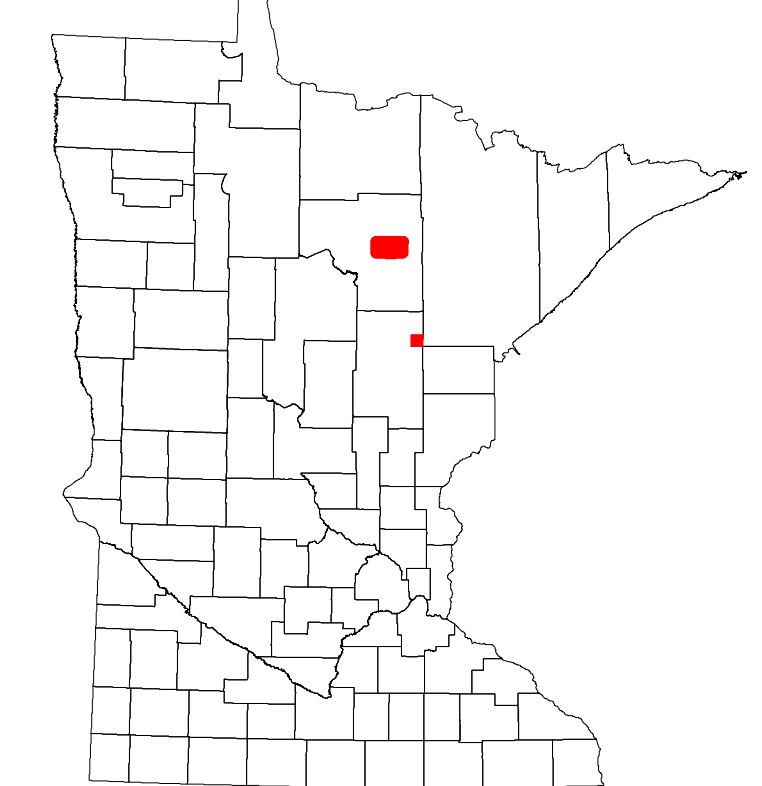
2024

Projection:
Transverse Mercator
NAD 1986
UTM Zone 15

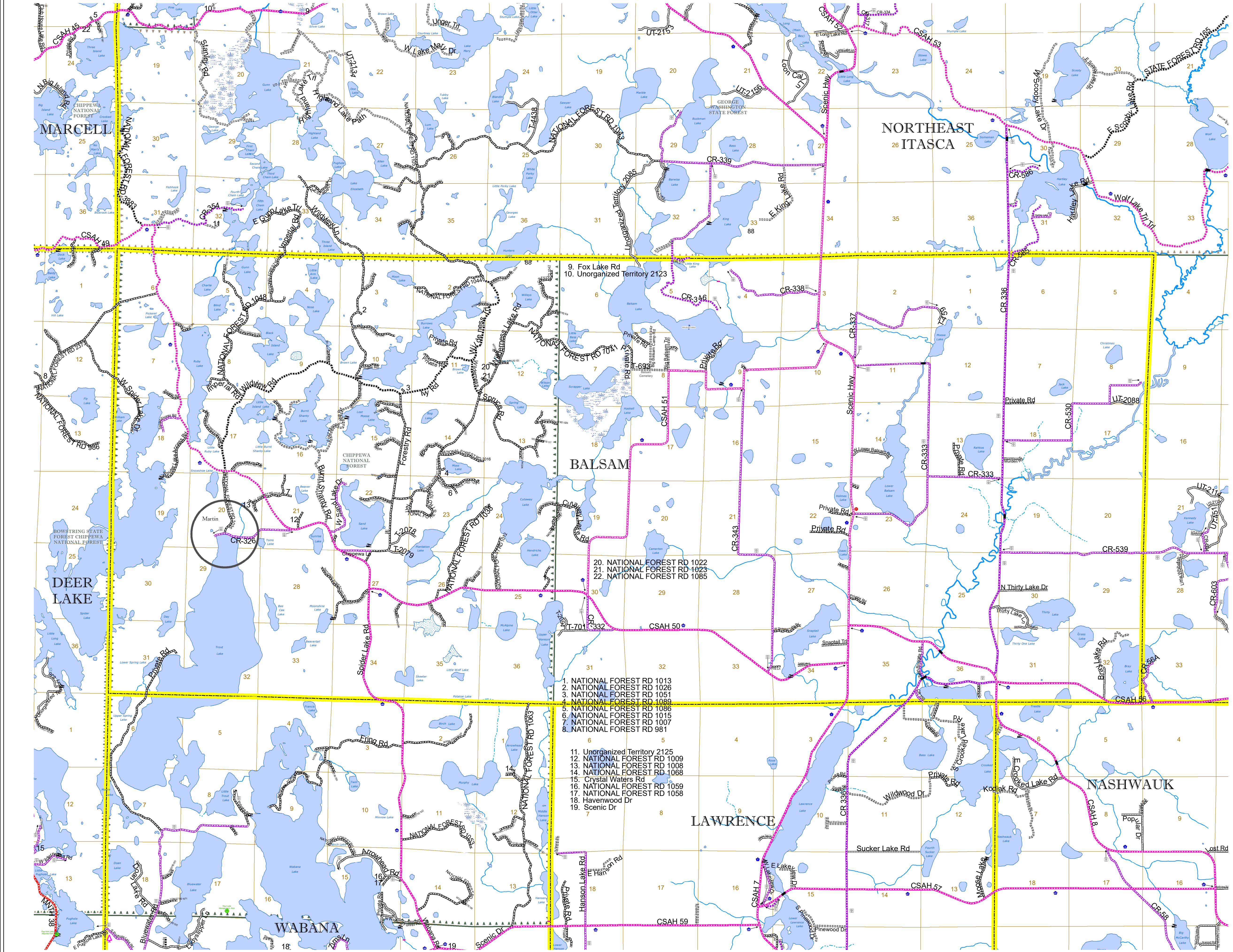


North American Datum
of 1986

ROAD AND ROADWAY FEATURES		AVIATION FEATURES	
INTERSTATE	[Symbol]	CONCRETE	[Symbol]
US HIGHWAY	[Symbol]	BITUMINOUS	[Symbol]
MN HIGHWAY	[Symbol]	GRAVEL	[Symbol]
COUNTY STATE AID HIGHWAY	[Symbol]	DIRT/UNIMPROVED	[Symbol]
COUNTY ROAD	[Symbol]	OTHER	[Symbol]
TOWNSHIP ROAD	[Symbol]	UNKNOWN	[Symbol]
UNORGANIZED TERRITORY ROAD	[Symbol]	RAMP OR CONNECTOR	[Symbol]
OTHER ROADS	[Symbol]	INTERSTATE EXIT	[Symbol]
Municipal	[Symbol]	NATIONAL PARK	[Symbol]
Private	[Symbol]	NATIONAL WILDLIFE STATE GAME	[Symbol]
National Monument	[Symbol]	State Park	[Symbol]
State Forest	[Symbol]	Preserve	[Symbol]
Military	[Symbol]		
RAILROAD AND RAILWAY FEATURES		BOUNDARY FEATURES	
EMPIRE BUILDER STATION (AMTRAK)	[Symbol]	TRIBAL LAND	[Symbol]
NORTHSTAR STATION (COMMUTER)	[Symbol]	STATE OF MINNESOTA	[Symbol]
LIGHT RAIL	[Symbol]	COUNTY	[Symbol]
BLUE LINE	[Symbol]	MUNICIPALITY	[Symbol]
GREEN LINE	[Symbol]	UNORGANIZED TERRITORY	[Symbol]
		FEDERAL ADJUSTED URBAN AREA (2014)	[Symbol]
		CIVIL TOWNSHIP	[Symbol]
		CONGRESSIONAL TOWNSHIP	[Symbol]
		SECTION	[Symbol]
		MILITARY	[Symbol]
		VOYAGEURS NATIONAL PARK	[Symbol]
		BOUNDARY WATERS CANOE AREA WILDERNESS	[Symbol]
		STATE PARK	[Symbol]
		REGIONAL PARK	[Symbol]
		NATIONAL FOREST	[Symbol]
		NATIONAL AND STATE FOREST	[Symbol]
		STATE FOREST	[Symbol]
		WILDLIFE REFUGUE AREA	[Symbol]
		WILDLIFE MANAGEMENT AREA	[Symbol]
		HYDROLOGIC FEATURES	
		RIVER OR STREAM (PERMANENT)	[Symbol]
		LAKE, POND OR RESERVOIR	[Symbol]
		STREAM (INTERMITTENT)	[Symbol]
		DRAINAGE DITCH	[Symbol]
		WETLAND	[Symbol]
		ISLAND OR LAND	[Symbol]
		REGIONAL WATERSHED	[Symbol]
CITY CENTERS			
STATE CAPITAL	[Symbol]		
COUNTY SEAT	[Symbol]		
CITY CENTER	[Symbol]		
UNINCORPORATED COMMUNITY	[Symbol]		
PUBLIC SERVICE FEATURES			
MNDOT OFFICE	[Symbol]		
MNDOT TRUCK STATION	[Symbol]		
HIGHWAY PATROL DISTRICT OFFICE	[Symbol]		
STATE TRAVEL INFORMATION CENTER	[Symbol]		
REST AREA (FULL SERVICE)	[Symbol]		
REST AREA (VAULT TOILET)	[Symbol]		
WAYSIDE (VAULT OR PVI TOILET)	[Symbol]		
PARK AND RIDE LOT	[Symbol]		
PORT OF ENTRY	[Symbol]		
PUBLIC ACCESS POINT	[Symbol]		
MN STATE COLLEGE AND UNIVERSITY SYSTEM (MNSCU)	[Symbol]		
UNIVERSITY OF MN SYSTEM	[Symbol]		
FARMGROUNDS	[Symbol]		
CULTURAL FEATURES			
STATE HISTORICAL MARKER	[Symbol]		
HISTORIC DISTRICT	[Symbol]		
HISTORIC SITE	[Symbol]		
MONUMENT	[Symbol]		



Population (U.S. Census 2010): 550



- 1. NATIONAL FOREST RD 1013
- 2. NATIONAL FOREST RD 1026
- 3. NATIONAL FOREST RD 1051
- 4. NATIONAL FOREST RD 1089
- 5. NATIONAL FOREST RD 1086
- 6. NATIONAL FOREST RD 1015
- 7. NATIONAL FOREST RD 1007
- 8. NATIONAL FOREST RD 981

- 11. Unorganized Territory 2125
- 12. NATIONAL FOREST RD 1009
- 13. NATIONAL FOREST RD 1008
- 14. NATIONAL FOREST RD 1068
- 15. Crystal Waters Rd
- 16. NATIONAL FOREST RD 1059
- 17. NATIONAL FOREST RD 1058
- 18. Haverwood Dr
- 19. Scenic Dr

To request information from this document in an alternative format, call 651-366-4718 or 1-800-657-3774 (Greater Minnesota); 711 or 1-800-627-3529 (Minnesota Relay). You may also send an e-mail to ADarequest.dot@state.mn.us. (Please request at least one week in advance.)