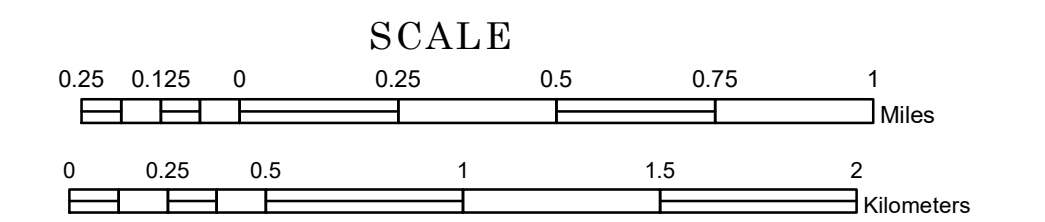


TOWNSHIP OF KANDIYOHI

PREPARED BY THE
MINNESOTA DEPARTMENT OF TRANSPORTATION
OFFICE OF TRANSPORTATION SYSTEM MANAGEMENT

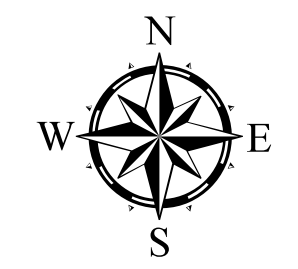
IN COOPERATION WITH
U.S. DEPARTMENT OF TRANSPORTATION
FEDERAL HIGHWAY ADMINISTRATION



1 in = 1,600 ft

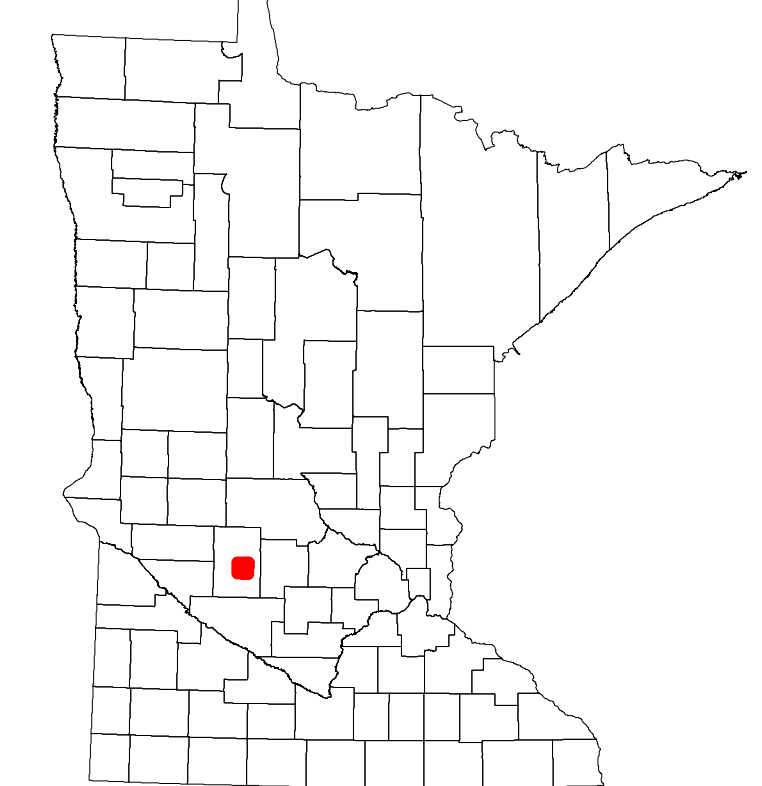
2023

Projection:
Transverse Mercator
NAD 1986
UTM Zone 15

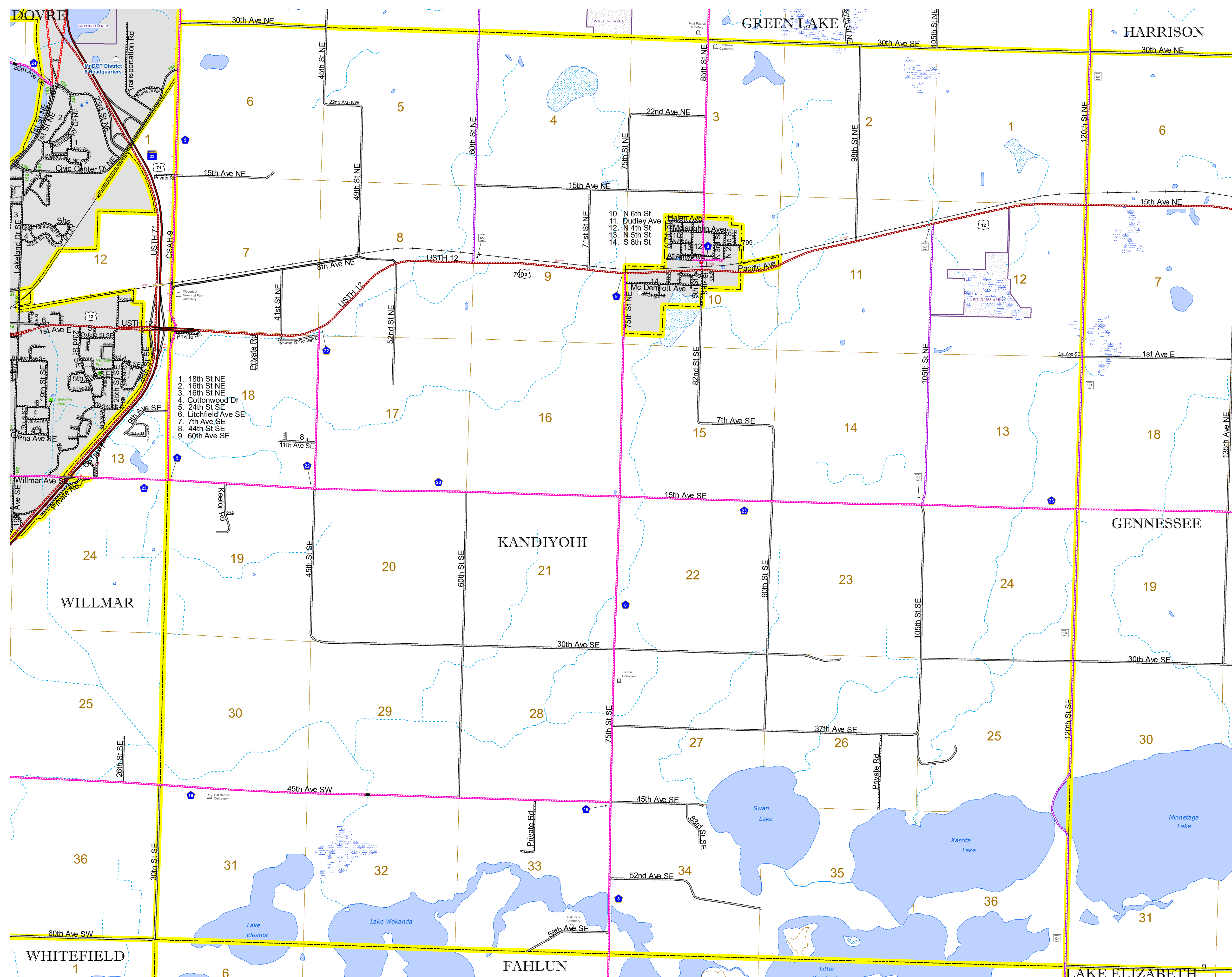


North American Datum
of 1986

ROAD AND ROADWAY FEATURES		BOUNDARY FEATURES	
INTERSTATE	CONCRETE	TRIBAL LAND	STATE OF MINNESOTA
US HIGHWAY	BITUMINOUS	COUNTY	MUNICIPALITY
MN HIGHWAY	GRAVEL	UNINCORPORATED TOWNSHIP	CIVIL TOWNSHIP
COUNTY STATE AID HIGHWAY	DIRT/UNIMPROVED	CONGRESSIONAL TOWNSHIP	SECTION
COUNTY ROAD	OTHER	MILITARY	VOYAGEURS NATIONAL PARK
TOWNSHIP ROAD	UNKNOWN	BOUNDRY WATERS CANOE AREA WILDERNESS	STATE PARK
UNORGANIZED TERRITORY ROAD		NATIONAL FOREST	REGIONAL PARK
OTHER ROADS		NATIONAL AND STATE FOREST	NATIONAL FOREST
Municipal		STATE FOREST	WILDLIFE REFUGUE AREA
Private		WILDLIFE MANAGEMENT AREA	WILDLIFE MANAGEMENT AREA
National Monument		NATIONAL TRAIL	WILDLIFE REFUGUE AREA
National Wildlife		WILDLIFE REFUGUE AREA	WILDLIFE MANAGEMENT AREA
State Park		WILDLIFE REFUGUE AREA	WILDLIFE MANAGEMENT AREA
Preserve		WILDLIFE REFUGUE AREA	WILDLIFE MANAGEMENT AREA
		WILDLIFE REFUGUE AREA	WILDLIFE MANAGEMENT AREA
RAILROAD AND RAILWAY FEATURES		HYDROLOGIC FEATURES	
EMPIRE BUILDER STATION (AMTRAK)	COMMERCIAL AIRPORT	RIVER OR STREAM (PERENNIAL)	LAKE, POND OR RESERVOIR
NORTHSTAR STATION (COMPUTER)	GENERAL AIRPORT	STREAM (INTERMITTENT)	DRAINAGE DITCH
LIGHT RAIL	AIRSTRIP	WETLAND	ISLAND OR LAND
BLUE LINE	SEAPLANE	REGIONAL WATERSHED	
GREEN LINE	AIRPORT RUNWAY		
INFRASTRUCTURE FEATURES			
LONG BRIDGE (200' OR GREATER SPAN)	TRIAL LAND		
MAJOR BRIDGE (20' TO 200' SPAN)	COUNTY		
MINOR BRIDGE (5' TO 20' SPAN)	MUNICIPALITY		
DAM	UNINCORPORATED TOWNSHIP		
LOCK-AND-DAM	CIVIL TOWNSHIP		
CITY CENTERS			
STATE CAPITAL	CONGRESSIONAL TOWNSHIP		
COUNTY SEAT	CIVIL TOWNSHIP		
CITY CENTER	CONGRESSIONAL TOWNSHIP		
UNINCORPORATED COMMUNITY			
PUBLIC SERVICE FEATURES			
MNDOT OFFICE			
MNDOT TRUCK STATION			
HIGHWAY PATROL DISTRICT OFFICE			
STATE TRAVEL INFORMATION CENTER			
REST AREA (FULL SERVICE)			
REST AREA (VAULT TOILET)			
WAYSIDE (VAULT OR PITY TOILET)			
PARK AND RIDE LOT			
PORT OF ENTRY			
PUBLIC ACCESS POINT			
MN STATE COLLEGE AND UNIVERSITY SYSTEM (MNSCU)			
UNIVERSITY OF MN SYSTEM			
FAIRGROUNDS			
CULTURAL FEATURES			
STATE HISTORICAL MARKER			
HISTORIC DISTRICT			
HISTORIC SITE			
MONUMENT			



Population (U.S. Census 2010): 636



To request information from this document in an alternative format, call 651-366-4718 or 1-800-657-3774 (Greater Minnesota); 711 or 1-800-627-3529 (Minnesota Relay). You may also send an e-mail to ADarequest.dot@state.mn.us. (Please request at least one week in advance.)