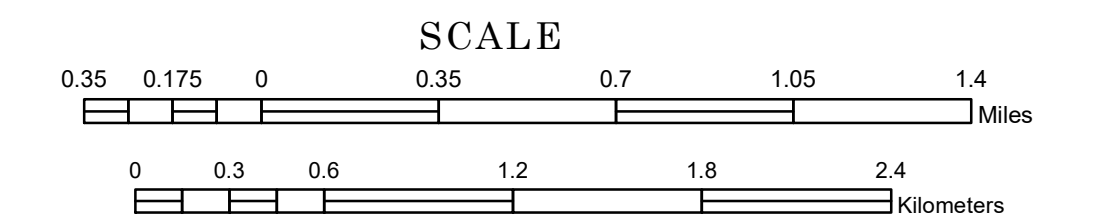


# TOWNSHIP OF SAINT JOSEPH

PREPARED BY THE  
MINNESOTA DEPARTMENT OF TRANSPORTATION  
OFFICE OF TRANSPORTATION SYSTEM MANAGEMENT

IN COOPERATION WITH  
U.S. DEPARTMENT OF TRANSPORTATION  
FEDERAL HIGHWAY ADMINISTRATION



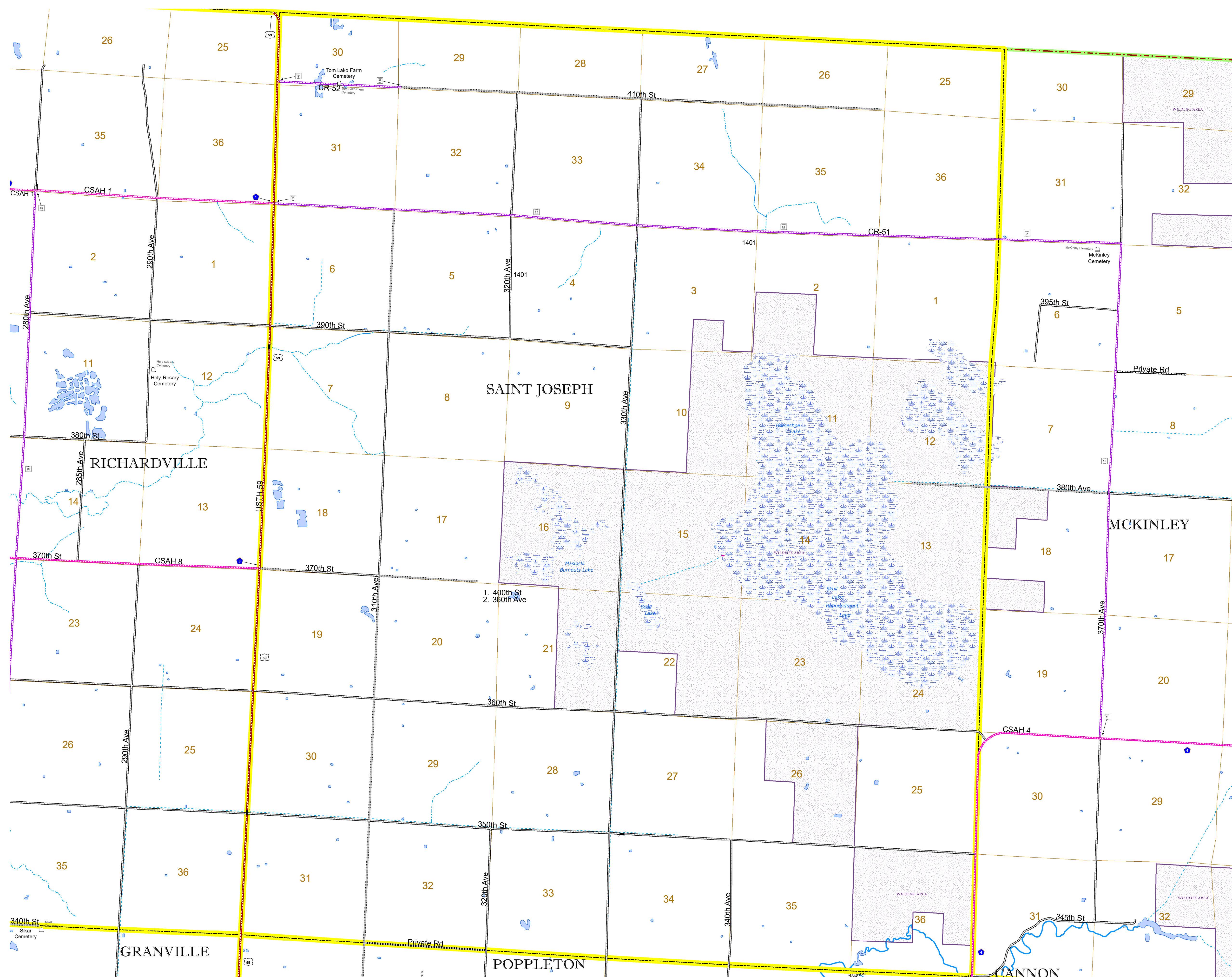
1 in = 2,000 ft

2024

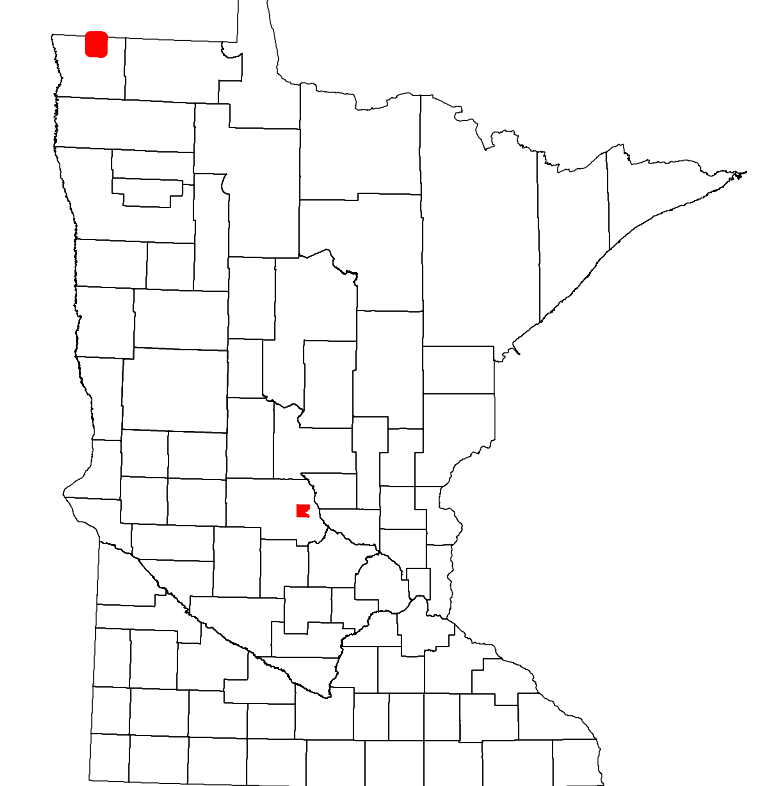
Projection:  
Transverse Mercator  
NAD 1986  
UTM Zone 15



North American Datum  
of 1986



ROAD AND ROADWAY FEATURES		AVIATION FEATURES	
INTERSTATE	CONCRETE	COMMERCIAL AIRPORT	GENERAL AIRPORT
US HIGHWAY	BITUMINOUS	AIRSTRIP	SEAPLANE
MN HIGHWAY	GRAVEL	AIRPORT RUNWAY	BOUNDARY FEATURES
COUNTY STATE AID HIGHWAY	DIRT/UNIMPROVED	TRAIL	TRIBAL LAND
COUNTY ROAD	OTHER	STATE OF MINNESOTA	COUNTY
TOWNSHIP ROAD	UNKNOWN	MUNICIPALITY	MUNICIPALITY
UNORGANIZED TERRITORY ROAD		UNORGANIZED TERRITORY	FEDERAL ADJUSTED URBAN AREA (2014)
OTHER ROADS		CIVIL TOWNSHIP	CIVIL TOWNSHIP
Municipal	RAMP OR CONNECTOR	CONGRESSIONAL TOWNSHIP	SECTION
Private	INTERSTATE EXIT	MILITARY	VOYAGEURS NATIONAL PARK
National Monument	INTERSTATE EXIT	VOYAGEURS NATIONAL PARK	BOUNDARY WATERS CANOE AREA WILDERNESS
National Wildlife Refuge	INTERSTATE EXIT	STATE PARK	STATE PARK
State Park	INTERSTATE EXIT	NATIONAL FOREST	NATIONAL FOREST
Preserve	INTERSTATE EXIT	NATIONAL AND STATE FOREST	NATIONAL AND STATE FOREST
	INTERSTATE EXIT	STATE FOREST	STATE FOREST
	INTERSTATE EXIT	WILDLIFE REFUGE AREA	WILDLIFE REFUGE AREA
	INTERSTATE EXIT	WILDLIFE MANAGEMENT AREA	WILDLIFE MANAGEMENT AREA
	INTERSTATE EXIT	HYDROLOGIC FEATURES	HYDROLOGIC FEATURES
	INTERSTATE EXIT	RIVER OR STREAM (PERENNIAL)	RIVER OR STREAM (PERENNIAL)
	INTERSTATE EXIT	LAKE, POND OR RESERVOIR	LAKE, POND OR RESERVOIR
	INTERSTATE EXIT	STREAM (INTERMITTENT)	STREAM (INTERMITTENT)
	INTERSTATE EXIT	DRAINAGE DITCH	DRAINAGE DITCH
	INTERSTATE EXIT	WETLAND	WETLAND
	INTERSTATE EXIT	ISLAND OR LAND	ISLAND OR LAND
	INTERSTATE EXIT	REGIONAL WATERSHED	REGIONAL WATERSHED



Population (U.S. Census 2010): 56

To request information from this document in an alternative format, call 651-366-4718 or 1-800-657-3774 (Greater Minnesota); 711 or 1-800-627-3529 (Minnesota Relay). You may also send an e-mail to ADarequest.dot@state.mn.us. (Please request at least one week in advance.)