

# TOWNSHIP OF SOUTH RED RIVER

PREPARED BY THE  
MINNESOTA DEPARTMENT OF TRANSPORTATION  
OFFICE OF TRANSPORTATION SYSTEM MANAGEMENT

IN COOPERATION WITH  
U.S. DEPARTMENT OF TRANSPORTATION  
FEDERAL HIGHWAY ADMINISTRATION



1 in = 1,600 ft

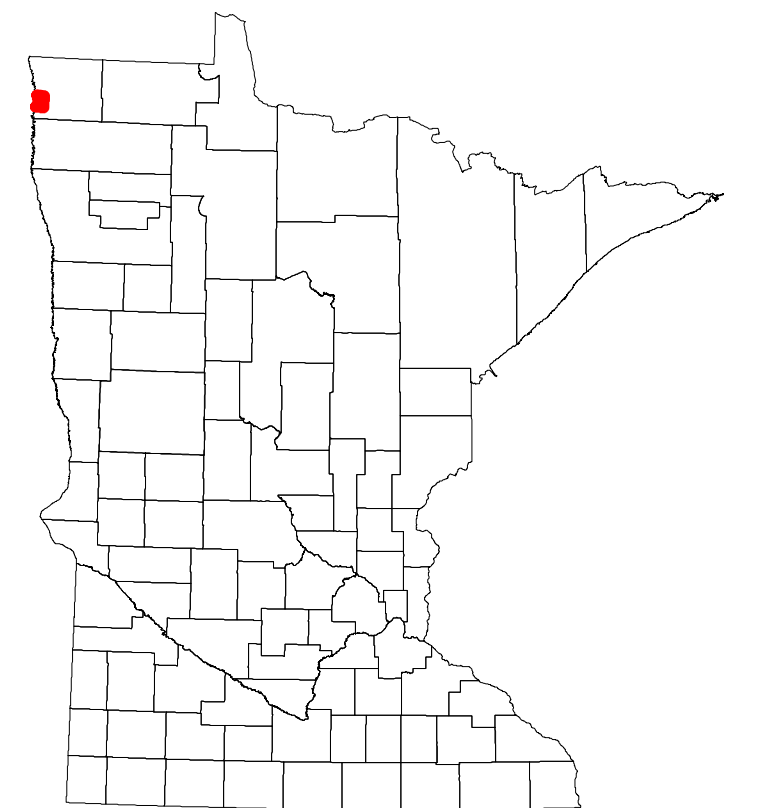
2024

Projection:  
Transverse Mercator  
NAD 1986  
UTM Zone 15

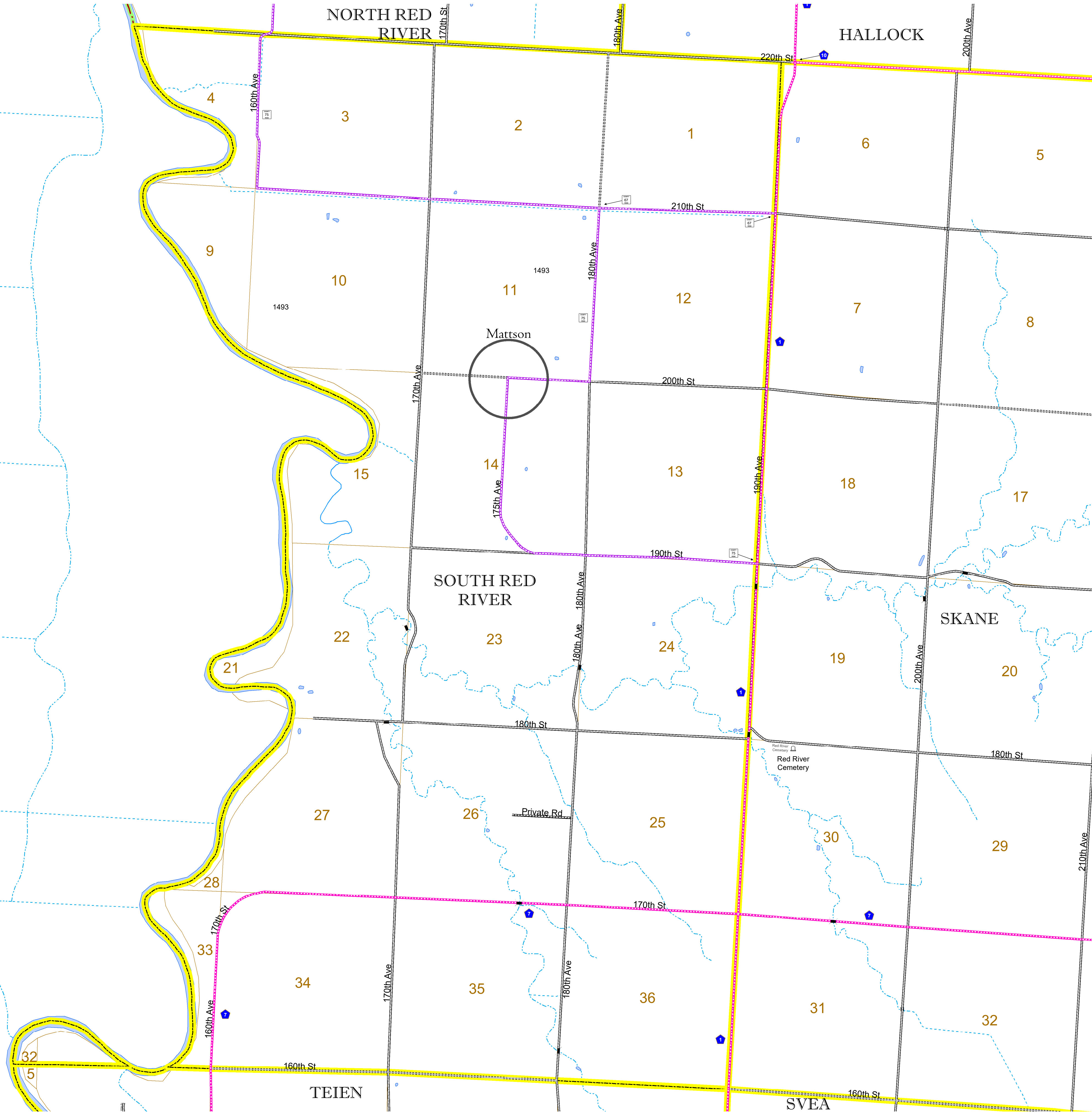


North American Datum  
of 1986

ROAD AND ROADWAY FEATURES		AVIATION FEATURES	
INTERSTATE	CONCRETE	COMMERCIAL AIRPORT	GENERAL AIRPORT
US HIGHWAY	BITUMINOUS	AIRSTRIP	SEAPLANE
MN HIGHWAY	GRAVEL	AIRPORT RUNWAY	RAILROAD AND RAILWAY FEATURES
COUNTY STATE AID HIGHWAY	DIRT/UNIMPROVED	EMPIRE BUILDER STATION (AMTRAK)	NORTHSTAR STATION (COMMUTER)
COUNTY ROAD	OTHER	LIGHT RAIL	BLUE LINE
TOWNSHIP ROAD	UNKNOWN	GREEN LINE	INFRASTRUCTURE FEATURES
UNORGANIZED TERRITORY ROAD	RAMP OR CONNECTOR	LONG BRIDGE (200' OR GREATER SPAN)	MAJOR BRIDGE (20' TO 200' SPAN)
OTHER ROADS	INTERSTATE EXIT	MINOR BRIDGE (5' TO 20' SPAN)	DAM
Municipal	GREAT RIVER ROAD	LOCK AND DAM	CITY CENTERS
Private	UNINCORPORATED COMMUNITY	STATE CAPITAL	COUNTY SEAT
National Monument	STATE OF MINNESOTA	MNDOT OFFICE	MNDOT TRUCK STATION
National Wildlife Refuge	COUNTY	HIGHWAY PATROL DISTRICT OFFICE	STATE TRAVEL INFORMATION CENTER
State Park	MUNICIPALITY	REST AREA (FULL SERVICE)	REST AREA (VAULT TOILET)
Preserve	UNORGANIZED TERRITORY	WAYSIDE (VAULT OR PIT TOILET)	PARK AND RIDE LOT
	FEDERAL ADJUSTED URBAN AREA (2014)	PORT OF ENTRY	PUBLIC ACCESS POINT
	CIVIL TOWNSHIP	MN STATE COLLEGE AND UNIVERSITY SYSTEM (MNSCU)	UNIVERSITY OF MN SYSTEM
	CONGRESSIONAL TOWNSHIP	FAIRGROUNDS	CULTURAL FEATURES
	SECTION		STATE HISTORICAL MARKER
	MILITARY		HISTORIC DISTRICT
	VOYAGEURS NATIONAL PARK		HISTORIC SITE
	BOUNDARY WATERS CANOE AREA WILDERNESS		MONUMENT
	STATE PARK		
	REGIONAL PARK		
	NATIONAL FOREST		
	NATIONAL AND STATE FOREST		
	STATE FOREST		
	NATIONAL TRAIL		
	WILDLIFE REFUGUE AREA		
	WILDLIFE MANAGEMENT AREA		
	HYDROLOGIC FEATURES		
	RIVER OR STREAM (PERMANENT)		
	LAKE, POND OR RESERVOIR		
	STREAM (INTERMITTENT)		
	DRAINAGE DITCH		
	WETLAND		
	ISLAND OR LAND		
	REGIONAL WATERSHED		



Population (U.S. Census 2010): 19



To request information from this document in an alternative format, call 651-366-4718 or 1-800-657-3774 (Greater Minnesota); 711 or 1-800-627-3529 (Minnesota Relay). You may also send an e-mail to ADArequest.dot@state.mn.us. (Please request at least one week in advance.)