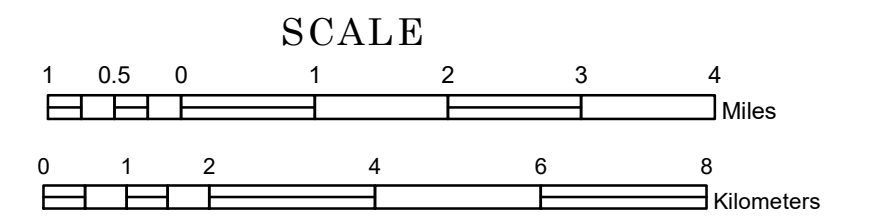


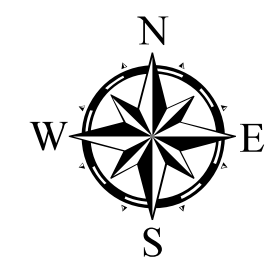
TOWNSHIP OF STONY RIVER

PREPARED BY THE
MINNESOTA DEPARTMENT OF TRANSPORTATION
OFFICE OF TRANSPORTATION SYSTEM MANAGEMENT

IN COOPERATION WITH
U.S. DEPARTMENT OF TRANSPORTATION
FEDERAL HIGHWAY ADMINISTRATION



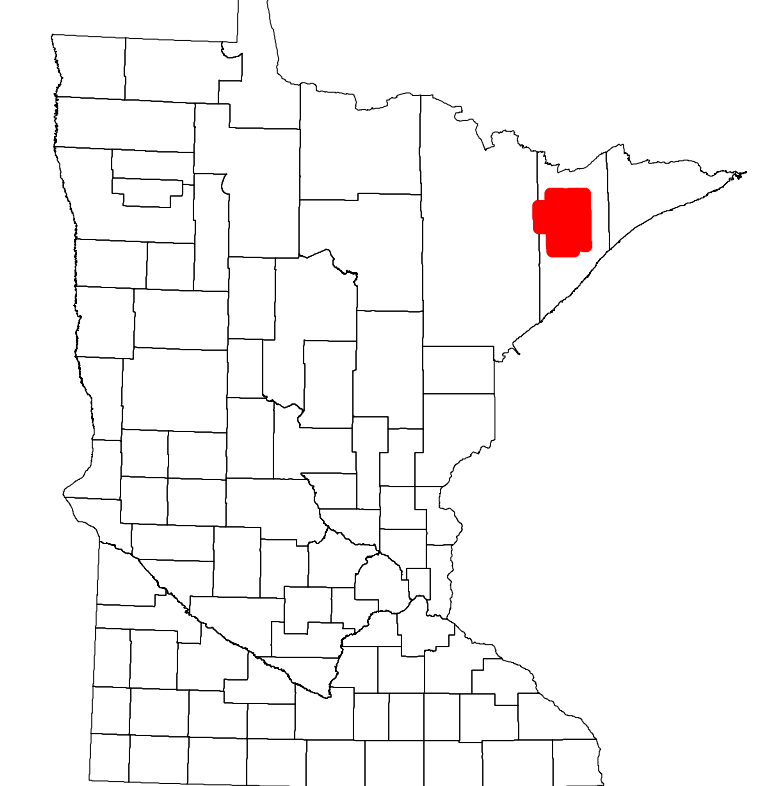
1 in = 7,600 ft
2023



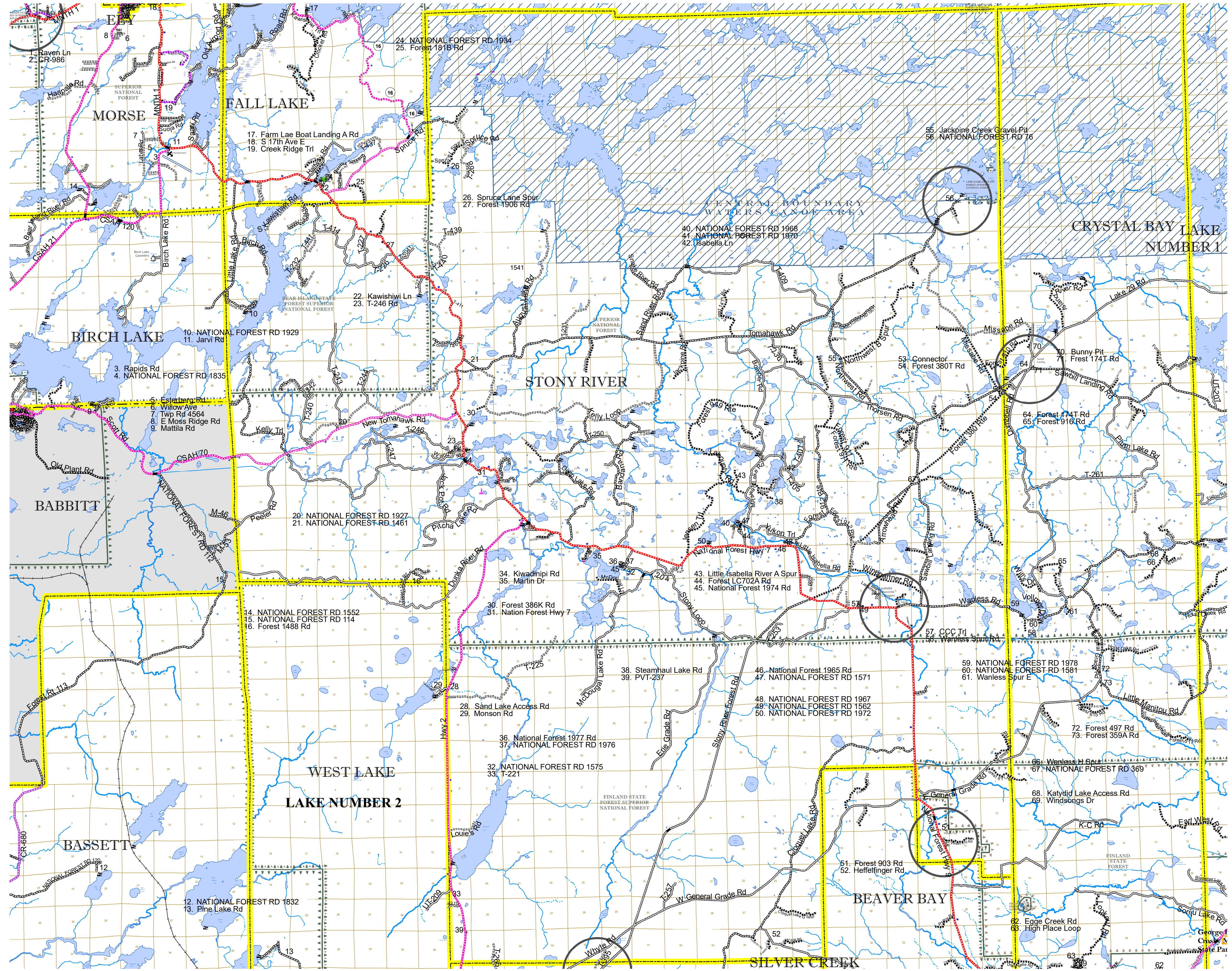
North American Datum
of 1986

Projection:
Transverse Mercator
NAD 1986
UTM Zone 15

ROAD AND ROADWAY FEATURES		RAILROAD AND RAILWAY FEATURES		AVIATION FEATURES	
INTERSTATE	[Symbol]	EMPIRE BUILDER STATION (AMTRAK)	[Symbol]	COMMERCIAL AIRPORT	[Symbol]
US HIGHWAY	[Symbol]	NORTHSTAR STATION (COMMUTER)	[Symbol]	GENERAL AIRPORT	[Symbol]
MN HIGHWAY	[Symbol]	LIGHT RAIL	[Symbol]	AIRSTRIP	[Symbol]
COUNTY STATE AID HIGHWAY	[Symbol]	BLUE LINE	[Symbol]	SEAPLANE	[Symbol]
COUNTY ROAD	[Symbol]	GREEN LINE	[Symbol]	AIRPORT RUNWAY	[Symbol]
TOWNSHIP ROAD	[Symbol]	LONG BRIDGE (200' OR GREATER SWAY)	[Symbol]	TRIAL LAND	[Symbol]
UNORGANIZED TERRITORY ROAD	[Symbol]	MAJOR BRIDGE (5' TO 200' SWAY)	[Symbol]	STATE OF MINNESOTA	[Symbol]
OTHER ROADS	[Symbol]	MINOR BRIDGE (5' TO 20' SWAY)	[Symbol]	COUNTY	[Symbol]
Municipal	[Symbol]	LOCK AND DAM	[Symbol]	MUNICIPALITY	[Symbol]
Private	[Symbol]		[Symbol]	UNORGANIZED TERRITORY	[Symbol]
National Monument	[Symbol]		[Symbol]	FEDERAL ADJUSTED URBAN AREA (2014)	[Symbol]
State Forest	[Symbol]		[Symbol]	CIVIL TOWNSHIP	[Symbol]
National Forest	[Symbol]		[Symbol]	CONGRESSIONAL TOWNSHIP	[Symbol]
State Park	[Symbol]		[Symbol]	SECTION	[Symbol]
National Wildlife Refuge	[Symbol]		[Symbol]	MILITARY	[Symbol]
State Park	[Symbol]		[Symbol]	VOYAGEURS NATIONAL PARK	[Symbol]
Preserve	[Symbol]		[Symbol]	BOUNDARY WATERS CANOE AREA WILDERNESS	[Symbol]
State Park	[Symbol]		[Symbol]	STATE PARK	[Symbol]
State Park	[Symbol]		[Symbol]	REGIONAL PARK	[Symbol]
State Park	[Symbol]		[Symbol]	NATIONAL FOREST	[Symbol]
State Park	[Symbol]		[Symbol]	NATIONAL AND STATE FOREST	[Symbol]
State Park	[Symbol]		[Symbol]	STATE FOREST	[Symbol]
State Park	[Symbol]		[Symbol]	NATIONAL TRAIL	[Symbol]
State Park	[Symbol]		[Symbol]	WILDLIFE REFUGEA AREA	[Symbol]
State Park	[Symbol]		[Symbol]	WILDLIFE MANAGEMENT AREA	[Symbol]
State Park	[Symbol]		[Symbol]	HYDROLOGIC FEATURES	[Symbol]
State Park	[Symbol]		[Symbol]	RIVER OR STREAM (PERMANENT)	[Symbol]
State Park	[Symbol]		[Symbol]	LAKE, POND OR RESERVOIR	[Symbol]
State Park	[Symbol]		[Symbol]	STREAM (INTERMITTENT)	[Symbol]
State Park	[Symbol]		[Symbol]	DRAINAGE DITCH	[Symbol]
State Park	[Symbol]		[Symbol]	WETLAND	[Symbol]
State Park	[Symbol]		[Symbol]	ISLAND OR LAND	[Symbol]
State Park	[Symbol]		[Symbol]	REGIONAL WATERSHED	[Symbol]



Population (U.S. Census 2010): 173



To request information from this document in an alternative format, call 651-366-4718 or 1-800-657-3774 (Greater Minnesota); 711 or 1-800-627-3529 (Minnesota Relay). You may also send an e-mail to ADRequest.dot@state.mn.us. (Please request at least one week in advance.)