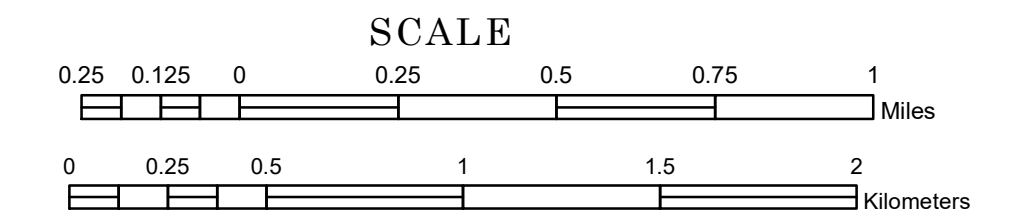


# TOWNSHIP OF MONTGOMERY

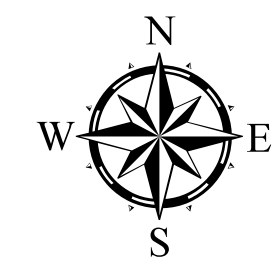
PREPARED BY THE  
MINNESOTA DEPARTMENT OF TRANSPORTATION  
OFFICE OF TRANSPORTATION SYSTEM MANAGEMENT

IN COOPERATION WITH  
U.S. DEPARTMENT OF TRANSPORTATION  
FEDERAL HIGHWAY ADMINISTRATION



1 in = 1,600 ft

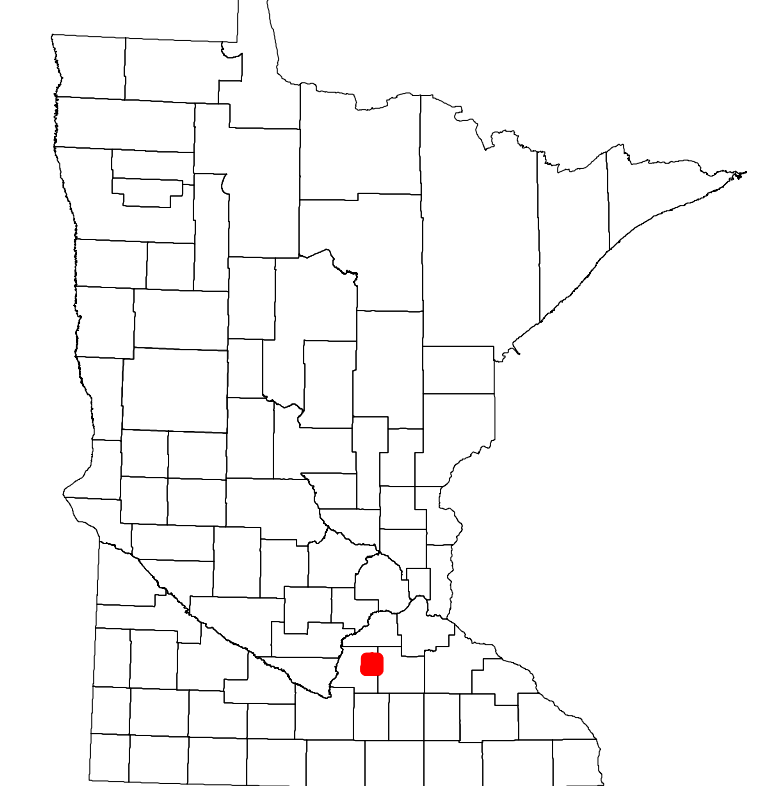
2024



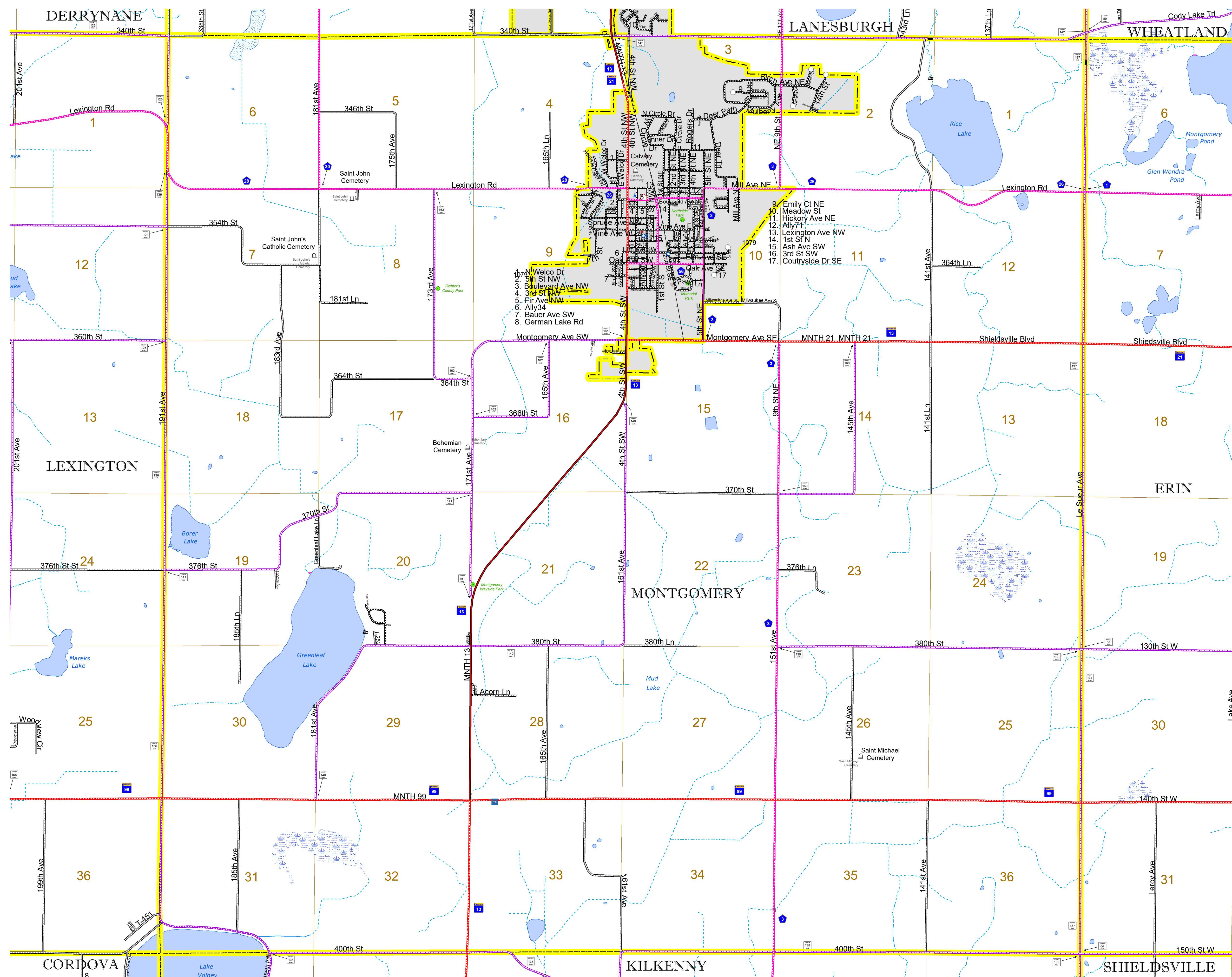
Projection:  
Transverse Mercator  
NAD 1986  
UTM Zone 15

North American Datum  
of 1986

ROAD AND ROADWAY FEATURES	
INTERSTATE	CONCRETE
US HIGHWAY	BITUMINOUS
MN HIGHWAY	GRAVEL
COUNTY STATE AID HIGHWAY	DIRT/UNIMPROVED
COUNTY ROAD	OTHER
TOWNSHIP ROAD	UNKNOWN
UNORGANIZED TERRITORY ROAD	
OTHER ROADS	
Municipal	RAMP OR CONNECTOR
Private	INTERSTATE EXIT
National Monument	AVIATION FEATURES
National Park	COMMERCIAL AIRPORT
National Wildlife Refuge	GENERAL AIRPORT
State Park	AIRSTRIP
Preserve	SEAPLANE
	AIRPORT RUNWAY
RAILROAD AND RAILWAY FEATURES	
EMPIRE BUILDER STATION (AMTRAK)	COMMERCIAL AIRPORT
NORTHSTAR STATION (COMPUTER)	GENERAL AIRPORT
	AIRSTRIP
	SEAPLANE
	AIRPORT RUNWAY
INFRASTRUCTURE FEATURES	
LONG BRIDGE (200' OR GREATER SPAN)	TRIAL LAND
MAJOR BRIDGE (20' TO 200' SPAN)	STATE OF MINNESOTA
MINOR BRIDGE (5' TO 20' SPAN)	COUNTY
	MUNICIPALITY
	UNORGANIZED TERRITORY
	FEDERAL ADJUSTED URBAN AREA (2014)
	CIVIL TOWNSHIP
	CONGRESSIONAL DISTRICT
	UNINCORPORATED COMMUNITY
CITY CENTERS	
STATE CAPITAL	MILITARY
COUNTY SEAT	VOYAGEURS NATIONAL PARK
CITY CENTER	BOUNDARY WATERS CANOE AREA WILDERNESS
UNINCORPORATED COMMUNITY	STATE PARK
PUBLIC SERVICE FEATURES	
MNDOT OFFICE	REGIONAL PARK
MNDOT TRUCK STATION	NATIONAL FOREST
HIGHWAY PATROL DISTRICT OFFICE	NATIONAL AND STATE FOREST
STATE TRAVEL INFORMATION CENTER	STATE FOREST
REST AREA (FULL SERVICE)	NATIONAL TRAIL
REST AREA (VAULT TOILET)	WILDLIFE REFUGEE AREA
WAYSIDE (VAULT OR PITY TOILET)	WILDLIFE MANAGEMENT AREA
PARK AND RIDE LOT	HYDROLOGIC FEATURES
PORT OF ENTRY	RIVER OR STREAM (PERENNIAL)
PUBLIC ACCESS POINT	LAKE, POND OR RESERVOIR
MN STATE COLLEGE AND UNIVERSITY SYSTEM (MNSCU)	STREAM (INTERMITTENT)
UNIVERSITY OF MN SYSTEM	DRAINAGE DITCH
FARMGROUNDS	WETLAND
CULTURAL FEATURES	
STATE HISTORICAL MARKER	ISLAND OR LAND
HISTORIC DISTRICT	REGIONAL WATERSHED
HISTORIC SITE	
MONUMENT	



Population (U.S. Census 2010): 665



To request information from this document in an alternative format, call 651-366-4718 or 1-800-657-3774 (Greater Minnesota); 711 or 1-800-627-3529 (Minnesota Relay). You may also send an e-mail to ADRequest.dot@state.mn.us. (Please request at least one week in advance.)