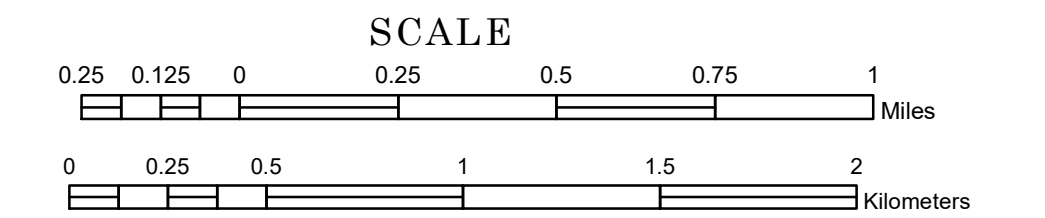


TOWNSHIP OF AUGSBURG

PREPARED BY THE
MINNESOTA DEPARTMENT OF TRANSPORTATION
OFFICE OF TRANSPORTATION SYSTEM MANAGEMENT

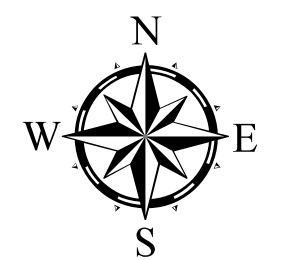
IN COOPERATION WITH
U.S. DEPARTMENT OF TRANSPORTATION
FEDERAL HIGHWAY ADMINISTRATION



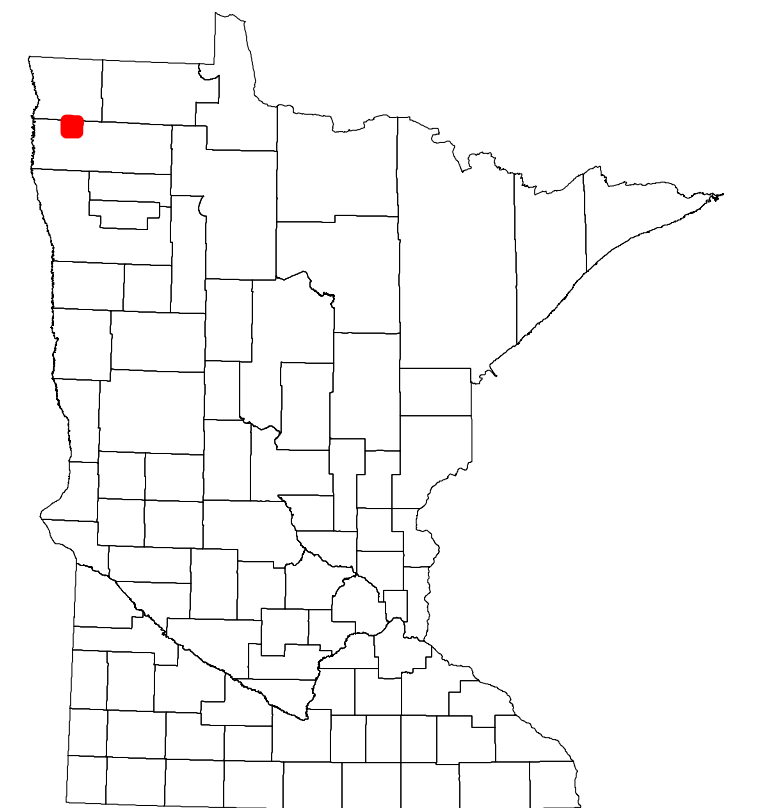
1 in = 1,600 ft

2023

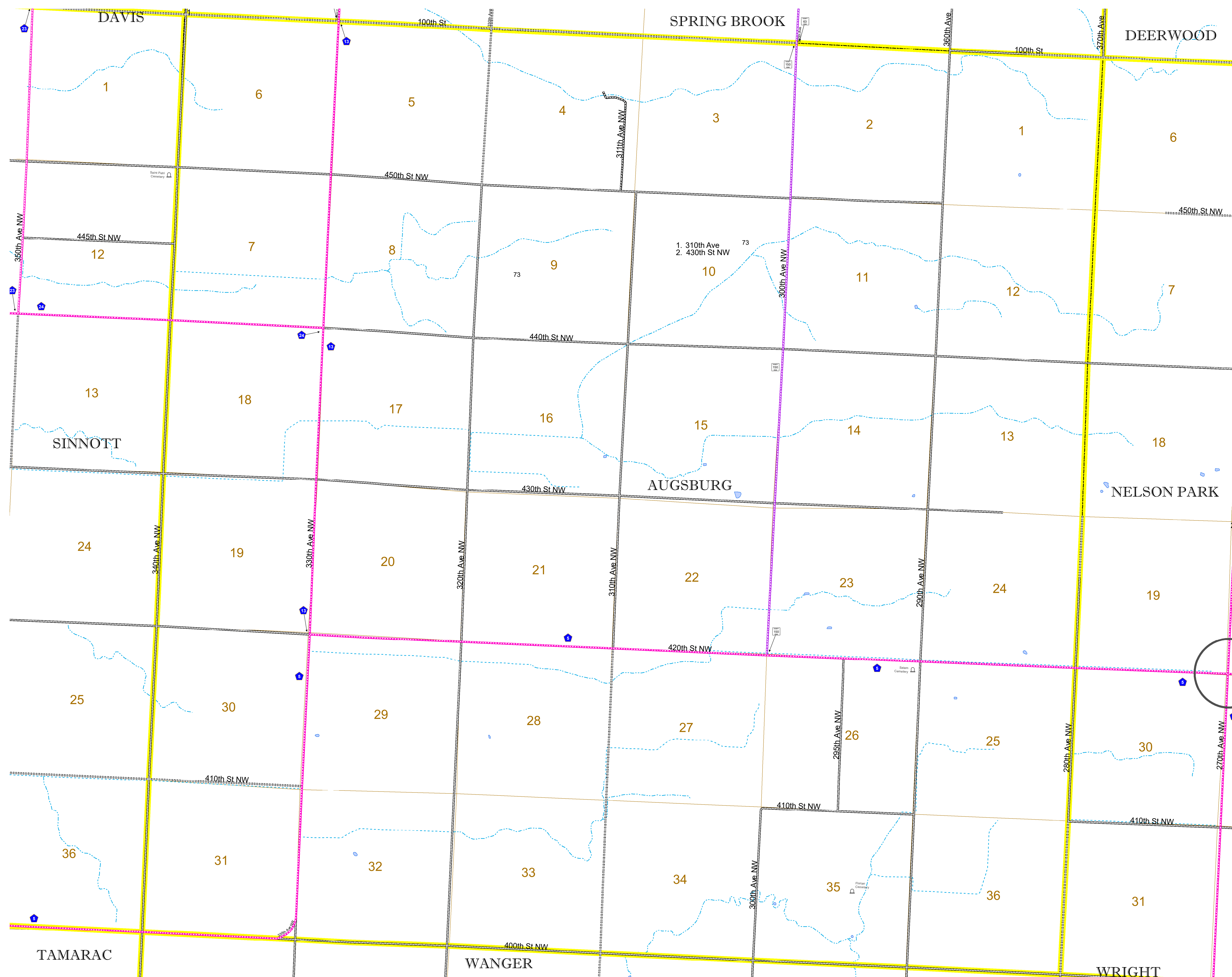
Projection:
Transverse Mercator
NAD 1986
UTM Zone 15



ROAD AND ROADWAY FEATURES		AVIATION FEATURES	
INTERSTATE	CONCRETE	COMMERCIAL AIRPORT	GENERAL AIRPORT
US HIGHWAY	BITUMINOUS	NORTHSTAR STATION (COMMUTER)	AIRSTRIP
MN HIGHWAY	GRAVEL	SEAPLANE	SEAPLANE
COUNTY STATE AID HIGHWAY	DIRT/UNIMPROVED	AIRPORT RUNWAY	AIRPORT RUNWAY
COUNTY ROAD	OTHER		
TOWNSHIP ROAD	UNKNOWN		
UNORGANIZED TERRITORY ROAD			
OTHER ROADS			
Municipal	RAMP OR CONNECTOR		
Private	INTERSTATE EXIT		
National Monument	GREAT RIVER ROAD		
National Park			
National Wildlife Refuge			
State Park			
Preserve			
RAILROAD AND RAILWAY FEATURES		BOUNDARY FEATURES	
EMPIRE BUILDER STATION (AMTRAK)	TRIBAL LAND	STATE OF MINNESOTA	COUNTY
NORTHSTAR STATION (COMMUTER)	STATE OF MINNESOTA	MUNICIPALITY	MUNICIPALITY
LIGHT RAIL	FEDERAL ADJUSTED URBAN AREA (2014)	UNINCORPORATED TOWNSHIP	CIVIL TOWNSHIP
BLUE LINE	CIVIL TOWNSHIP	CONGRESSIONAL TOWNSHIP	SECTION
GREEN LINE	CONGRESSIONAL TOWNSHIP	MILITARY	MILITARY
		VOYAGEURS NATIONAL PARK	VOYAGEURS NATIONAL PARK
		BOUNDARY WATERS CANOE AREA WILDERNESS	BOUNDARY WATERS CANOE AREA WILDERNESS
		STATE PARK	STATE PARK
		REGIONAL PARK	REGIONAL PARK
		NATIONAL FOREST	NATIONAL FOREST
		NATIONAL AND STATE FOREST	NATIONAL AND STATE FOREST
		STATE FOREST	STATE FOREST
		WILDLIFE REFUGUE AREA	WILDLIFE REFUGUE AREA
		WILDLIFE MANAGEMENT AREA	WILDLIFE MANAGEMENT AREA
		HYDROLOGIC FEATURES	
		RIVER OR STREAM (PERMANENT)	RIVER OR STREAM (PERMANENT)
		LAKE, POND OR RESERVOIR	LAKE, POND OR RESERVOIR
		STREAM (INTERMITTENT)	STREAM (INTERMITTENT)
		DRAINAGE DITCH	DRAINAGE DITCH
		WETLAND	WETLAND
		ISLAND OR LAND	ISLAND OR LAND
		REGIONAL WATERSHED	REGIONAL WATERSHED



Population (U.S. Census 2010): 74



To request information from this document in an alternative format, call 651-366-4718 or 1-800-657-3774 (Greater Minnesota); 711 or 1-800-627-3529 (Minnesota Relay). You may also send an e-mail to ADRequest.dot@state.mn.us. (Please request at least one week in advance.)