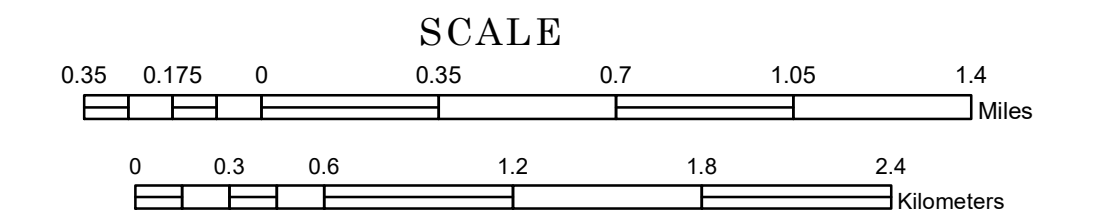


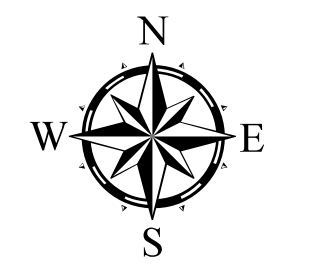
TOWNSHIP OF COMSTOCK

PREPARED BY THE
MINNESOTA DEPARTMENT OF TRANSPORTATION
OFFICE OF TRANSPORTATION SYSTEM MANAGEMENT

IN COOPERATION WITH
U.S. DEPARTMENT OF TRANSPORTATION
FEDERAL HIGHWAY ADMINISTRATION

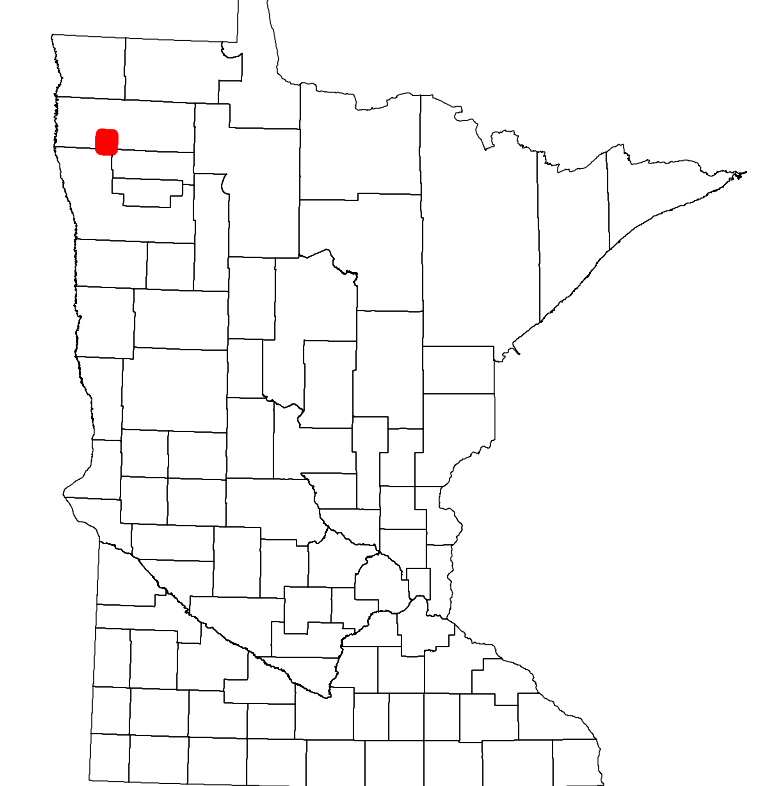


Projection:
Transverse Mercator
NAD 1986
UTM Zone 15

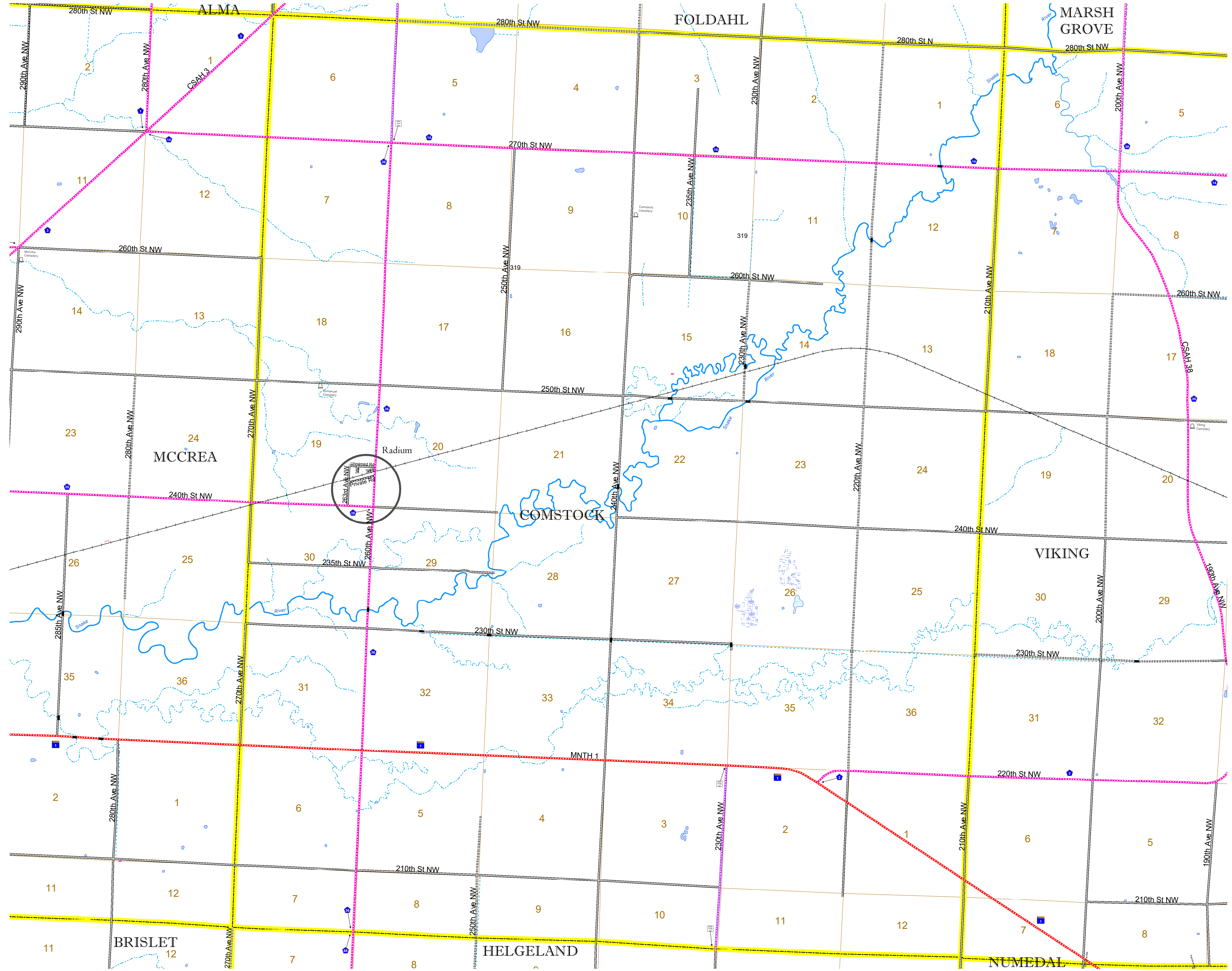


North American Datum
of 1986

ROAD AND ROADWAY FEATURES							
INTERSTATE	CONCRETE						
US HIGHWAY	BITUMINOUS						
MN HIGHWAY	GRAVEL						
COUNTY STATE AID HIGHWAY	DIRT/UNIMPROVED						
COUNTY ROAD	OTHER						
TOWNSHIP ROAD	UNKNOWN						
UNORGANIZED TERRITORY ROAD	RAMP OR CONNECTOR						
OTHER ROADS	INTERSTATE EXIT						
Municipal	National Monument	State Forest	National Park	National Wildlife Refuge	State Park	Preserve	AVIATION FEATURES
Military	National Forest	State Park	Preserve	COMMERCIAL AIRPORT			
RAILROAD AND RAILWAY FEATURES							
EMPIRE BUILDER STATION (AMTRAK)	GENERAL AIRPORT						
NORTHSTAR STATION (COMPUTER)	AIRSTRIP						
LIGHT RAIL	SEAPLANE						
BLUE LINE	AIRPORT RUNWAY						
GREEN LINE	AIRPORT RUNWAY						
INFRASTRUCTURE FEATURES							
LONG BRIDGE (200' or Greater Span)	STATE OF MINNESOTA						
MAJOR BRIDGE (20' to 200' Span)	COUNTY						
MINOR BRIDGE (5' to 20' Span)	MUNICIPALITY						
DAM	UNORGANIZED TERRITORY						
LOCK AND DAM	FEDERAL ADJUSTED URBAN AREA (2014)						
CITY CENTERS							
STATE CAPITAL	COUNTY SEAT	CITY CENTER	UNINCORPORATED COMMUNITY	CIVIL TOWNSHIP			
PUBLIC SERVICE FEATURES							
MNDOT OFFICE	MILITARY						
MNDOT TRUCK STATION	VOYAGEURS NATIONAL PARK						
HIGHWAY PATROL DISTRICT OFFICE	BOUNDARY WATERS CANOE AREA WILDERNESS						
STATE TRAVEL INFORMATION CENTER	STATE PARK						
REST AREA (Full Service)	REGIONAL PARK						
REST AREA (Vault Toilet)	NATIONAL FOREST						
WAYSIDE (Vault or Pit Toilet)	NATIONAL AND STATE FOREST						
PARK AND RIDE LOT	STATE FOREST						
PORT OF ENTRY	NATIONAL TRAIL						
PUBLIC ACCESS POINT	WILDLIFE REFUGE AREA						
MN STATE COLLEGE AND UNIVERSITY SYSTEM (MNSCU)	WILDLIFE MANAGEMENT AREA						
UNIVERSITY OF MN SYSTEM	HYDROLOGIC FEATURES						
FAIRGROUNDS	RIVER OR STREAM (PERMANENT)						
CULTURAL FEATURES							
STATE HISTORICAL MARKER	DRAINAGE DITCH						
HISTORIC DISTRICT	WETLAND						
HISTORIC SITE	ISLAND OR LAND						
MONUMENT	REGIONAL WATERSHED						



Population (U.S. Census 2010): 105



To request information from this document in an alternative format, call 651-366-4718 or 1-800-657-3774 (Greater Minnesota); 711 or 1-800-627-3529 (Minnesota Relay). You may also send an e-mail to ADRequest.dot@state.mn.us. (Please request at least one week in advance.)