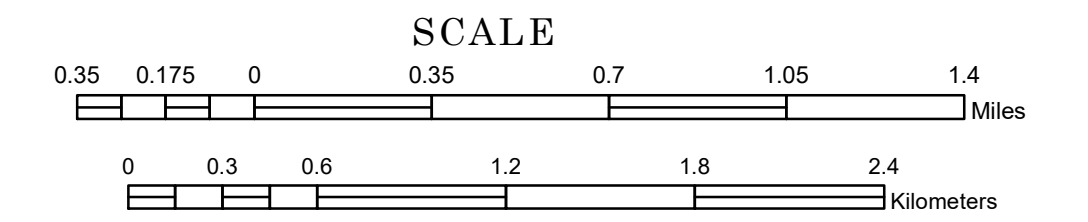


TOWNSHIP OF ESPELIE

PREPARED BY THE
MINNESOTA DEPARTMENT OF TRANSPORTATION
OFFICE OF TRANSPORTATION SYSTEM MANAGEMENT

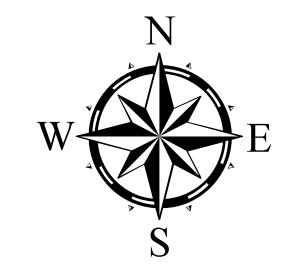
IN COOPERATION WITH
U.S. DEPARTMENT OF TRANSPORTATION
FEDERAL HIGHWAY ADMINISTRATION



1 in = 2,000 ft

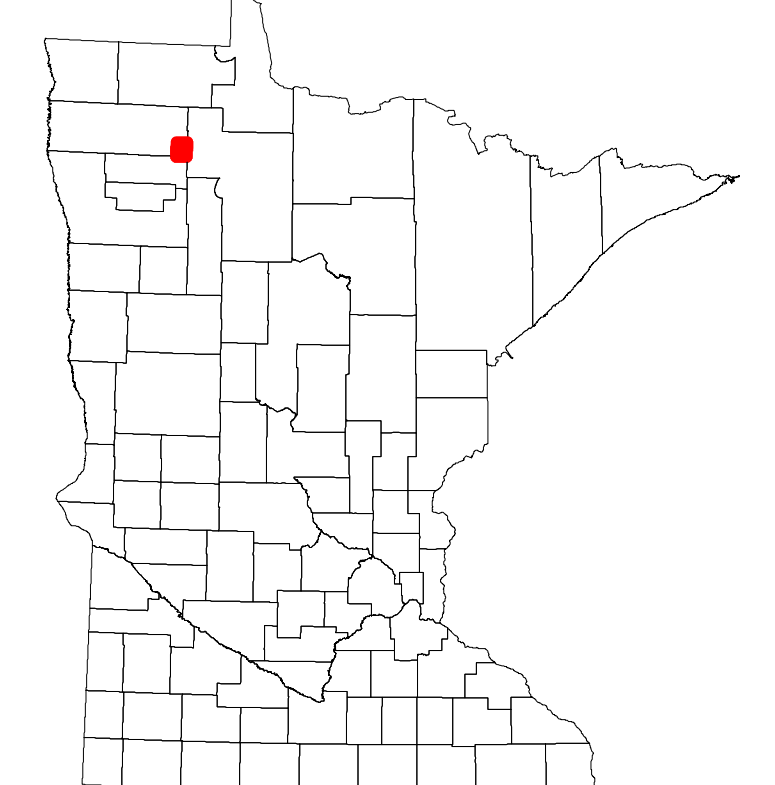
2023

Projection:
Transverse Mercator
NAD 1986
UTM Zone 15

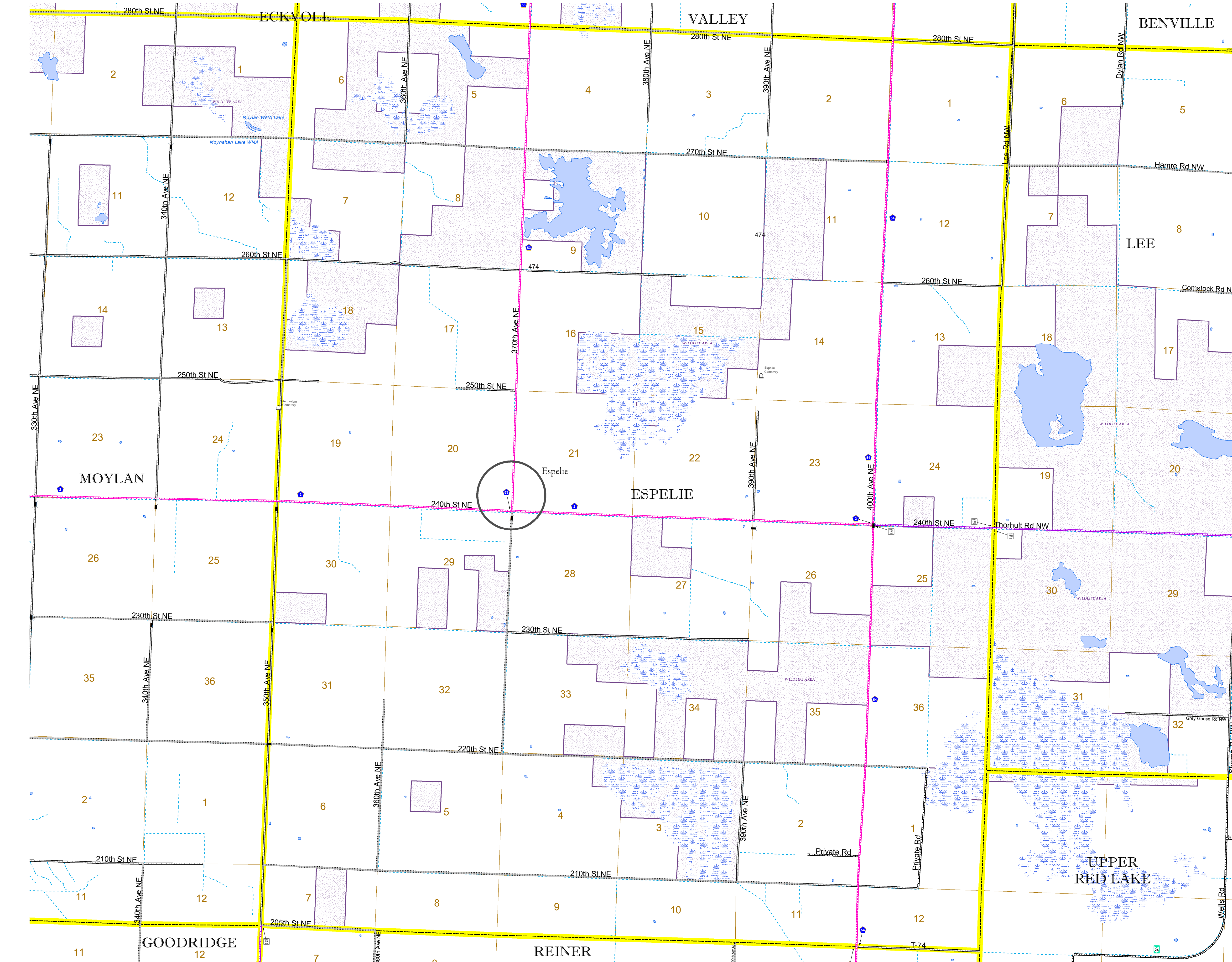


North American Datum
of 1986

ROAD AND ROADWAY FEATURES		BOUNDARY FEATURES	
INTERSTATE		CONCRETE	
US HIGHWAY		BITUMINOUS	
MN HIGHWAY		GRAVEL	
COUNTY STATE AID HIGHWAY		DIRT/UNIMPROVED	
COUNTY ROAD		OTHER	
TOWNSHIP ROAD		UNKNOWN	
UNORGANIZED TERRITORY ROAD		RAMP OR CONNECTOR	
OTHER ROADS		INTERSTATE EXIT	
Municipal		GREAT RIVER ROAD	
Private		AVIATION FEATURES	
National Monument		COMMERCIAL AIRPORT	
National Wildlife		GENERAL AIRPORT	
State Forest		AIRSTRIP	
State Park		SEAPLANE	
Preserve		AIRPORT RUNWAY	
RAILROAD AND RAILWAY FEATURES		CITY CENTERS	
EMPIRE BUILDER STATION (AMTRAK)		STATE CAPITAL	
NORTHSTAR STATION (COMPUTER)		COUNTY SEAT	
LIGHT RAIL		CITY CENTER	
BLUE LINE		UNINCORPORATED COMMUNITY	
GREEN LINE		PUBLIC SERVICE FEATURES	
INFRASTRUCTURE FEATURES		MNDOT OFFICE	
LONG BRIDGE (200' OR GREATER SPAN)		MNDOT TRUCK STATION	
MAJOR BRIDGE (20' TO 200' SPAN)		HIGHWAY PATROL DISTRICT OFFICE	
MINOR BRIDGE (5' TO 20' SPAN)		STATE TRAVEL INFORMATION CENTER	
DAM		REST AREA (FULL SERVICE)	
LOCK AND DAM		REST AREA (VAULT TOILET)	
CITY CENTERS		WAYSIDE (VAULT OR PITY TOILET)	
STATE CAPITAL		PARK AND RIDE LOT	
COUNTY SEAT		PORT OF ENTRY	
CITY CENTER		PUBLIC ACCESS POINT	
UNINCORPORATED COMMUNITY		MN STATE COLLEGE AND UNIVERSITY SYSTEM (MNSCU)	
PUBLIC SERVICE FEATURES		UNIVERSITY OF MN SYSTEM	
MNDOT OFFICE		FAIRGROUNDS	
MNDOT TRUCK STATION		CULTURAL FEATURES	
HIGHWAY PATROL DISTRICT OFFICE		STATE HISTORICAL MARKER	
STATE TRAVEL INFORMATION CENTER		HISTORIC DISTRICT	
REST AREA (FULL SERVICE)		HISTORIC SITE	
REST AREA (VAULT TOILET)		MONUMENT	
WAYSIDE (VAULT OR PITY TOILET)		HYDROLOGIC FEATURES	
PARK AND RIDE LOT		RIVER OR STREAM (PERENNIAL)	
PORT OF ENTRY		LAKE, POND OR RESERVOIR	
PUBLIC ACCESS POINT		STREAM (INTERMITTENT)	
MN STATE COLLEGE AND UNIVERSITY SYSTEM (MNSCU)		DRAINAGE DITCH	
UNIVERSITY OF MN SYSTEM		WETLAND	
FAIRGROUNDS		ISLAND OR LAND	
CULTURAL FEATURES		REGIONAL WATERSHED	
STATE HISTORICAL MARKER			
HISTORIC DISTRICT			
HISTORIC SITE			
MONUMENT			



Population (U.S. Census 2010): 39



To request information from this document in an alternative format, call 651-366-4718 or 1-800-657-3774 (Greater Minnesota); 711 or 1-800-627-3529 (Minnesota Relay). You may also send an e-mail to ADarequest.dot@state.mn.us. (Please request at least one week in advance.)