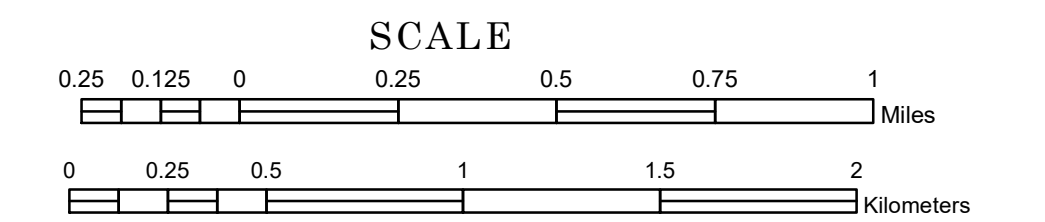


TOWNSHIP OF MIDDLE RIVER

PREPARED BY THE
MINNESOTA DEPARTMENT OF TRANSPORTATION
OFFICE OF TRANSPORTATION SYSTEM MANAGEMENT

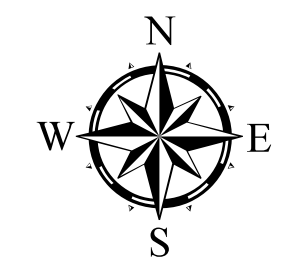
IN COOPERATION WITH
U.S. DEPARTMENT OF TRANSPORTATION
FEDERAL HIGHWAY ADMINISTRATION



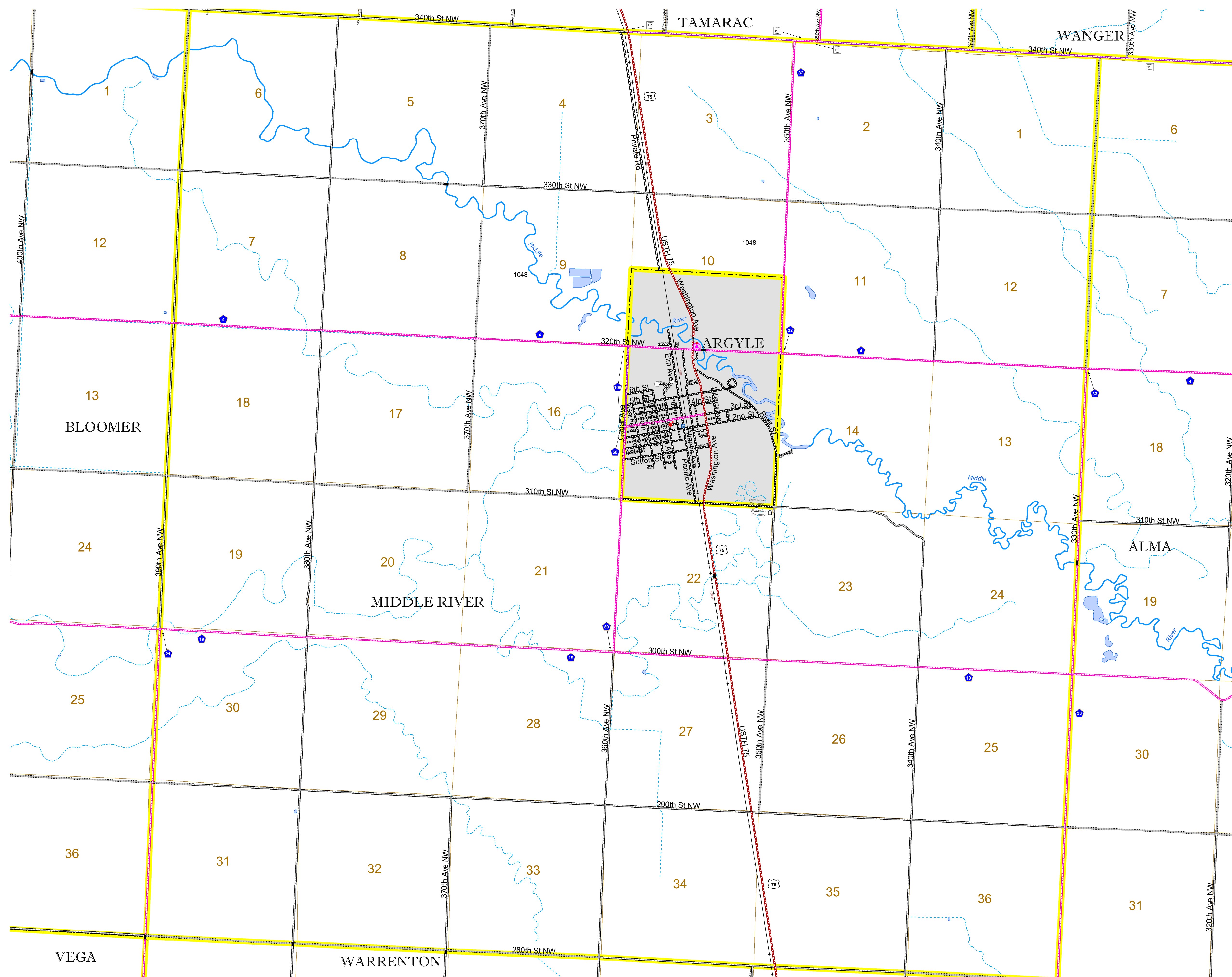
1 in = 1,600 ft

2023

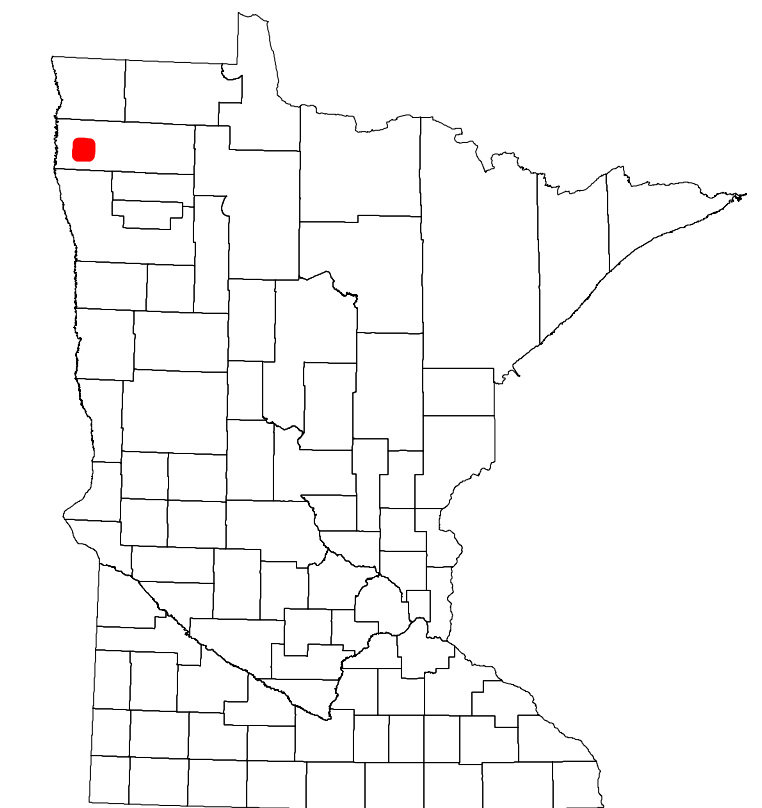
Projection:
Transverse Mercator
NAD 1986
UTM Zone 15



North American Datum
of 1986



ROAD AND ROADWAY FEATURES		
INTERSTATE	CONCRETE	
US HIGHWAY	BITUMINOUS	
MN HIGHWAY	GRAVEL	
COUNTY STATE AID HIGHWAY	DIRT/UNIMPROVED	
COUNTY ROAD	OTHER	
TOWNSHIP ROAD	UNKNOWN	
UNORGANIZED TERRITORY ROAD		
OTHER ROADS		
Municipal	RAMP OR CONNECTOR	
Private	INTERSTATE EXIT	
National Monument	AVIATION FEATURES	
National Wildlife	State Forest	
State Game	General Airport	
Military	National Park	
	State Park	
	Presence	
	Great River Road	
RAILROAD AND RAILWAY FEATURES		
EMPIRE BUILDER STATION (AMTRAK)	COMMERCIAL AIRPORT	
NORTHSTAR STATION (COMPUTER)	GENERAL AIRPORT	
LIGHT RAIL	AIRSTRIP	
BLUE LINE	SEAPLANE	
GREEN LINE	AIRPORT RUNWAY	
INFRASTRUCTURE FEATURES		
LONG BRIDGE (200' or Greater Span)	TRIBAL LAND	
MAJOR BRIDGE (20' to 200' Span)	STATE OF MINNESOTA	
MINOR BRIDGE (5' to 20' Span)	COUNTY	
DAM	MUNICIPALITY	
LOCK-AND-DAM	UNORGANIZED TERRITORY	
	FEDERAL ADJUSTED URBAN AREA (2014)	
	CIVIL TOWNSHIP	
	CONGRESSIONAL TOWNSHIP	
CITY CENTERS		
STATE CAPITAL	UNINCORPORATED COMMUNITY	
COUNTY SEAT		
CITY CENTER		
PUBLIC SERVICE FEATURES		
MNDOT OFFICE	MILITARY	
MNDOT TRUCK STATION	VOYAGEURS NATIONAL PARK	
HIGHWAY PATROL DISTRICT OFFICE	BOUNDARY WATERS CANOE AREA WILDERNESS	
STATE TRAVEL INFORMATION CENTER	STATE PARK	
REST AREA (Full Service)	REGIONAL PARK	
REST AREA (Vault Toilet)	NATIONAL FOREST	
WAYSIDE (Vault or Pit Toilet)	NATIONAL AND STATE FOREST	
PARK AND RIDE LOT	STATE FOREST	
PORT OF ENTRY	NATIONAL TRAIL	
PUBLIC ACCESS POINT	WILDLIFE REFUGE AREA	
MN STATE COLLEGE AND UNIVERSITY SYSTEM (MNSCU)	WILDLIFE MANAGEMENT AREA	
UNIVERSITY OF MN SYSTEM	HYDROLOGIC FEATURES	
FAIRGROUNDS	RIVER OR STREAM (PERENNIAL)	
	LAKE, POND OR RESERVOIR	
CULTURAL FEATURES		
STATE HISTORICAL MARKER	STREAM (INTERMITTENT)	
HISTORIC DISTRICT	DRAINAGE DITCH	
HISTORIC SITE	WETLAND	
MONUMENT	ISLAND OR LAND	
	REGIONAL WATERSHED	



Population (U.S. Census 2010): 78

To request information from this document in an alternative format, call 651-366-4718 or 1-800-657-3774 (Greater Minnesota); 711 or 1-800-627-3529 (Minnesota Relay). You may also send an e-mail to ADRequest.dot@state.mn.us. (Please request at least one week in advance.)