

TOWNSHIP OF SPRUCE VALLEY

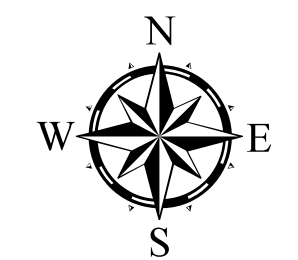
PREPARED BY THE
MINNESOTA DEPARTMENT OF TRANSPORTATION
OFFICE OF TRANSPORTATION SYSTEM MANAGEMENT

IN COOPERATION WITH
U.S. DEPARTMENT OF TRANSPORTATION
FEDERAL HIGHWAY ADMINISTRATION



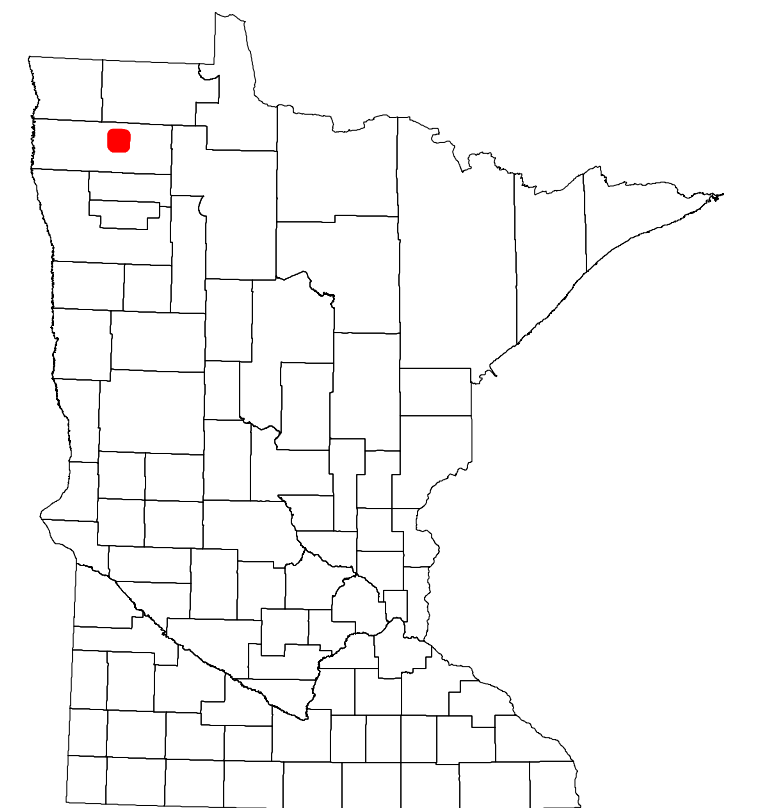
1 in = 1,600 ft
2023

Projection:
Transverse Mercator
NAD 1986
UTM Zone 15

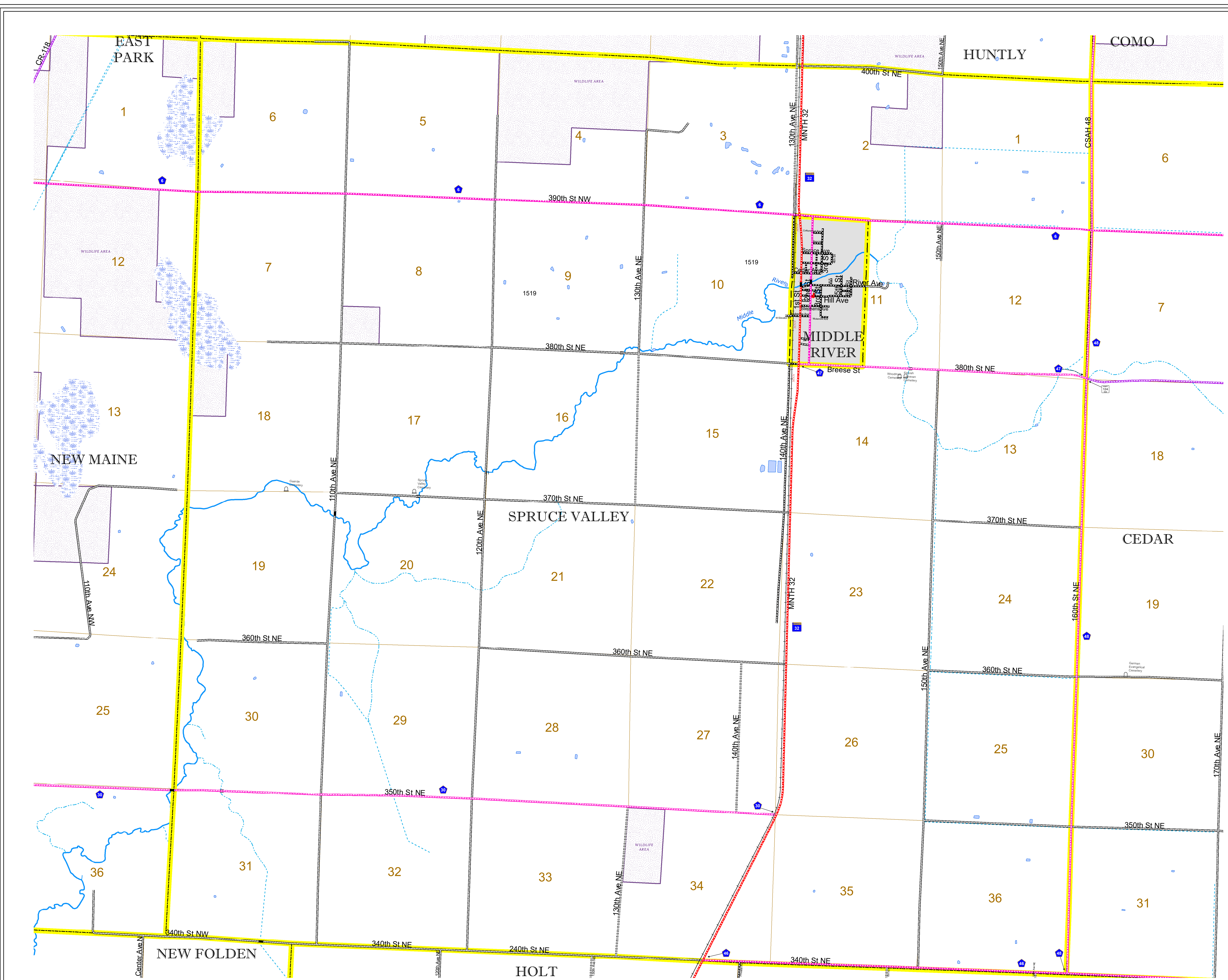


North American Datum
of 1986

ROAD AND ROADWAY FEATURES		RAILROAD AND RAILWAY FEATURES		AVIATION FEATURES		BOUNDARY FEATURES	
INTERSTATE	[Symbol]	EMPIRE BUILDER STATION (AMTRAK)	[Symbol]	COMMERCIAL AIRPORT	[Symbol]	TRIBAL LAND	[Symbol]
US HIGHWAY	[Symbol]	NORTHSTAR STATION (COMMUTER)	[Symbol]	GENERAL AIRPORT	[Symbol]	STATE OF MINNESOTA	[Symbol]
MN HIGHWAY	[Symbol]	LIGHT RAIL	[Symbol]	AIRSTRIP	[Symbol]	COUNTY	[Symbol]
COUNTY STATE AID HIGHWAY	[Symbol]	BLUE LINE	[Symbol]	SEAPLANE	[Symbol]	MUNICIPALITY	[Symbol]
COUNTY ROAD	[Symbol]	GREEN LINE	[Symbol]	AIRPORT RUNWAY	[Symbol]	UNORGANIZED TERRITORY	[Symbol]
TOWNSHIP ROAD	[Symbol]	LONG BRIDGE (200' or Greater Span)	[Symbol]	LOCK AND DAM	[Symbol]	FEDERAL ADJUSTED URBAN AREA (2014)	[Symbol]
UNORGANIZED TERRITORY ROAD	[Symbol]	MAJOR BRIDGE (20' to 200' Span)	[Symbol]	CITY CENTERS	[Symbol]	CIVIL TOWNSHIP	[Symbol]
OTHER ROADS	[Symbol]	MINOR BRIDGE (5' to 20' Span)	[Symbol]	STATE CAPITAL	[Symbol]	CONGRESSIONAL TOWNSHIP	[Symbol]
Municipal	[Symbol]	DAM	[Symbol]	COUNTY SEAT	[Symbol]	SECTION	[Symbol]
Private	[Symbol]	LOCK AND DAM	[Symbol]	CITY CENTER	[Symbol]	MILITARY	[Symbol]
National Monument	[Symbol]	CITY CENTERS	[Symbol]	UNINCORPORATED COMMUNITY	[Symbol]	VOYAGEURS NATIONAL PARK	[Symbol]
State Forest	[Symbol]	STATE CAPITAL	[Symbol]			BOUNDARY WATERS CANOE AREA WILDERNESS	[Symbol]
National Wildlife Refuge	[Symbol]	COUNTY SEAT	[Symbol]			STATE PARK	[Symbol]
State Park	[Symbol]	CITY CENTER	[Symbol]			REGIONAL PARK	[Symbol]
Preserve	[Symbol]	CITY CENTER	[Symbol]			NATIONAL FOREST	[Symbol]
		CITY CENTER	[Symbol]			NATIONAL AND STATE FOREST	[Symbol]
		CITY CENTER	[Symbol]			STATE FOREST	[Symbol]
		CITY CENTER	[Symbol]			WILDLIFE REFUGUE AREA	[Symbol]
		CITY CENTER	[Symbol]			WILDLIFE MANAGEMENT AREA	[Symbol]
		CITY CENTER	[Symbol]			HYDROLOGIC FEATURES	[Symbol]
		CITY CENTER	[Symbol]			RIVER OR STREAM (PERENNIAL)	[Symbol]
		CITY CENTER	[Symbol]			LAKE, POND OR RESERVOIR	[Symbol]
		CITY CENTER	[Symbol]			STREAM (INTERMITTENT)	[Symbol]
		CITY CENTER	[Symbol]			DRAINAGE DITCH	[Symbol]
		CITY CENTER	[Symbol]			WETLAND	[Symbol]
		CITY CENTER	[Symbol]			ISLAND OR LAND MONUMENT	[Symbol]
		CITY CENTER	[Symbol]			REGIONAL WATERSHED	[Symbol]



Population (U.S. Census 2010): 242



To request information from this document in an alternative format, call 651-366-4718 or 1-800-657-3774 (Greater Minnesota); 711 or 1-800-627-3529 (Minnesota Relay). You may also send an e-mail to ADarequest.dot@state.mn.us. (Please request at least one week in advance.)