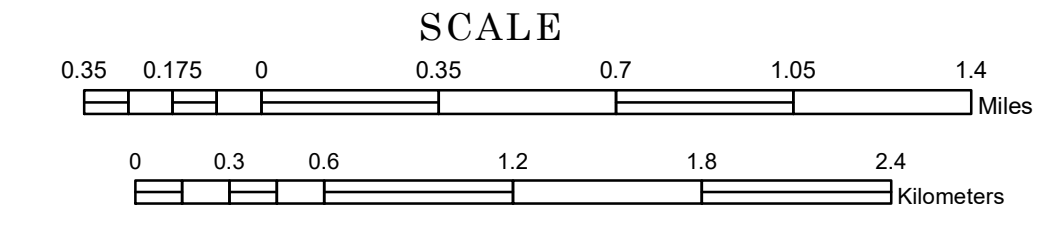


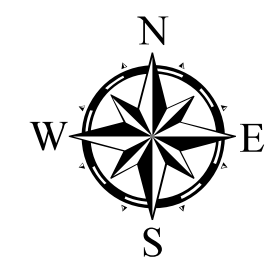
TOWNSHIP OF VIKING

PREPARED BY THE
MINNESOTA DEPARTMENT OF TRANSPORTATION
OFFICE OF TRANSPORTATION SYSTEM MANAGEMENT

IN COOPERATION WITH
U.S. DEPARTMENT OF TRANSPORTATION
FEDERAL HIGHWAY ADMINISTRATION

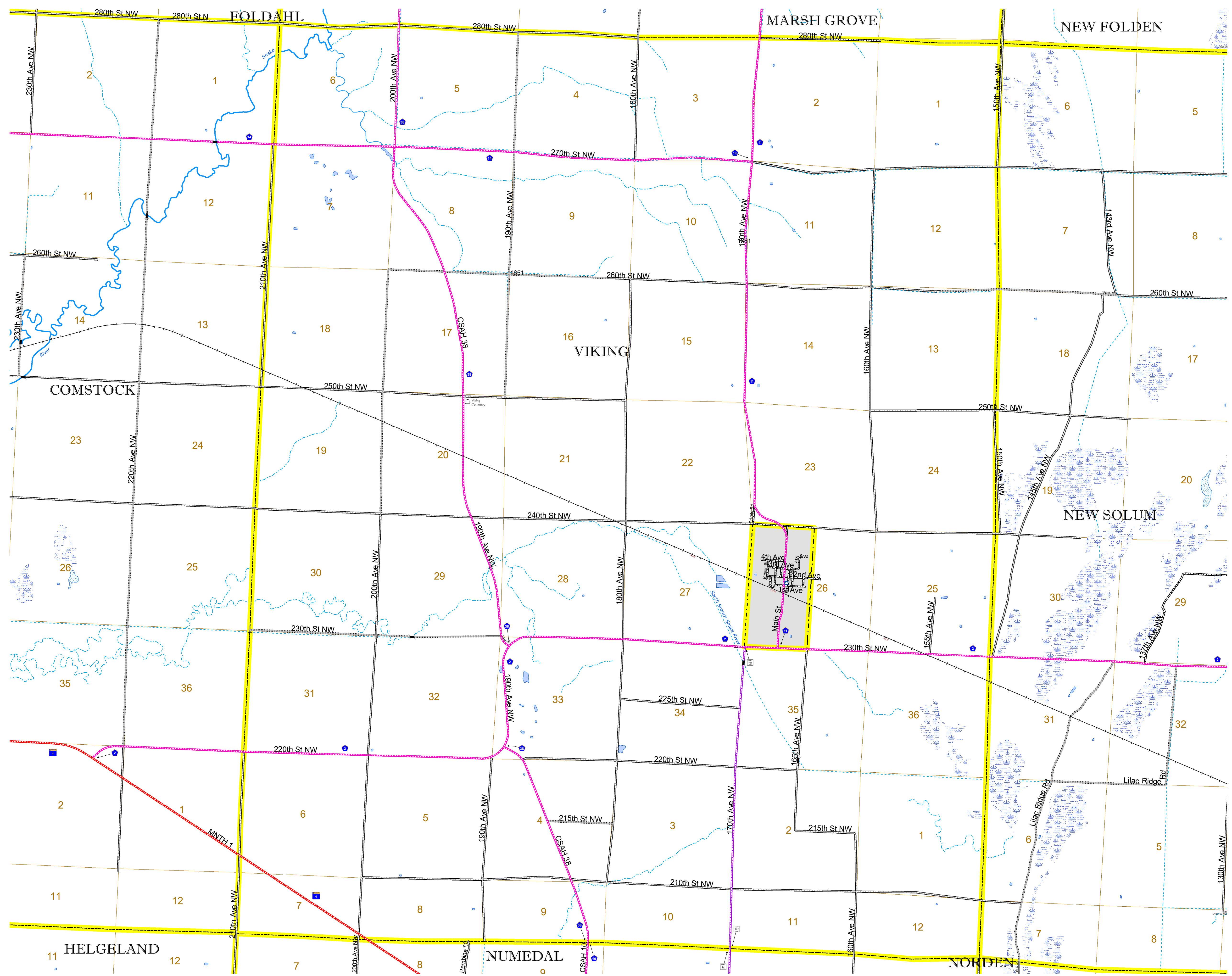


1 in = 2,000 ft
2023

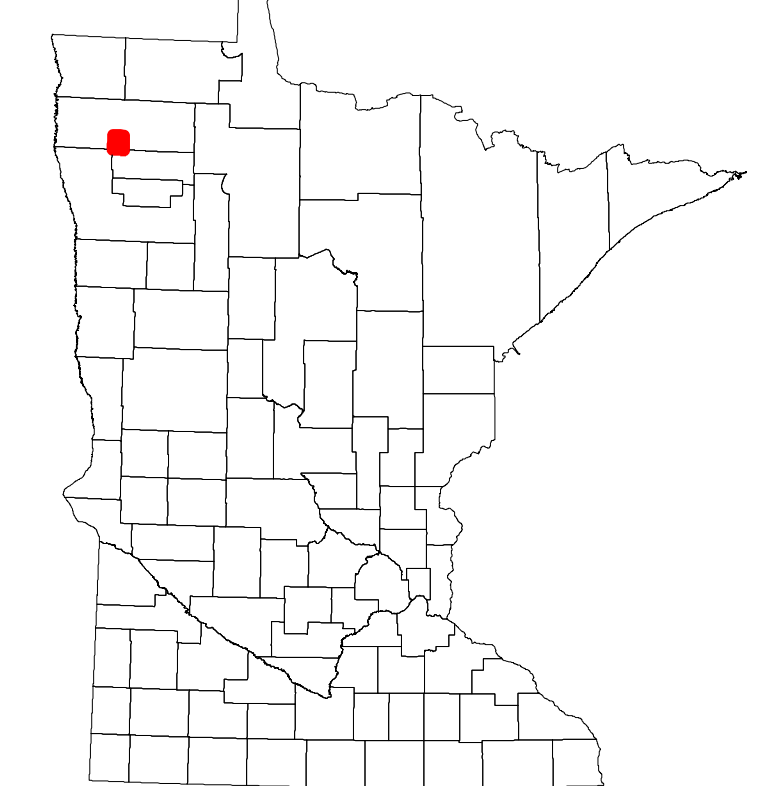


Projection:
Transverse Mercator
NAD 1986
UTM Zone 15

North American Datum
of 1986



ROAD AND ROADWAY FEATURES		AVIATION FEATURES	
INTERSTATE	CONCRETE	COMMERCIAL AIRPORT	GENERAL AIRPORT
US HIGHWAY	BITUMINOUS	AIRSTRIP	SEAPLANE
MN HIGHWAY	GRAVEL	AIRPORT RUNWAY	BOUNDARY FEATURES
COUNTY STATE AID HIGHWAY	DIRT/UNIMPROVED	TRIAL LAND	STATE OF MINNESOTA
COUNTY ROAD	OTHER	COUNTY	MUNICIPALITY
TOWNSHIP ROAD	UNKNOWN	UNINCORPORATED	CIVIL TOWNSHIP
UNORGANIZED TERRITORY ROAD	RAMP OR CONNECTOR	FEDERAL ADJUSTED URBAN AREA (2014)	SECTION
OTHER ROADS	INTERSTATE EXIT	CITY CENTER	MILITARY
Municipal	GREAT RIVER ROAD	CITY CENTER	VOYAGEURS NATIONAL PARK
Private	RAILROAD AND RAILWAY FEATURES	UNINCORPORATED	BOUNDARY WATERS CANOE AREA WILDERNESS
National Monument	EMPIRE BUILDER STATION (AMTRAK)	COMMUNITY	STATE PARK
National Wildlife Refuge	NORTHSTAR STATION (COMPUTER)	SECTION	REGIONAL PARK
State Park	LIGHT RAIL	SECTION	NATIONAL FOREST
Preserve	BLUE LINE	SECTION	NATIONAL AND STATE FOREST
	GREEN LINE	SECTION	STATE FOREST
	INFRASTRUCTURE FEATURES	SECTION	NATIONAL TRAIL
	LONG BRIDGE (200' OR GREATER SPAN)	SECTION	WILDLIFE REFUGUE AREA
	MAJOR BRIDGE (20' TO 200' SPAN)	SECTION	WILDLIFE MANAGEMENT AREA
	MINOR BRIDGE (5' TO 20' SPAN)	SECTION	HYDROLOGIC FEATURES
	DAM	SECTION	RIVER OR STREAM (PERMANENT)
	LOCK AND DAM	SECTION	LAKE, POND OR RESERVOIR
		SECTION	STREAM (INTERMITTENT)
		SECTION	DRAINAGE DITCH
		SECTION	WETLAND
		SECTION	ISLAND OR LAND
		SECTION	REGIONAL WATERSHED



Population (U.S. Census 2010): 156

To request information from this document in an alternative format, call 651-366-4718 or 1-800-657-3774 (Greater Minnesota); 711 or 1-800-627-3529 (Minnesota Relay). You may also send an e-mail to ADRequest.dot@state.mn.us. (Please request at least one week in advance.)