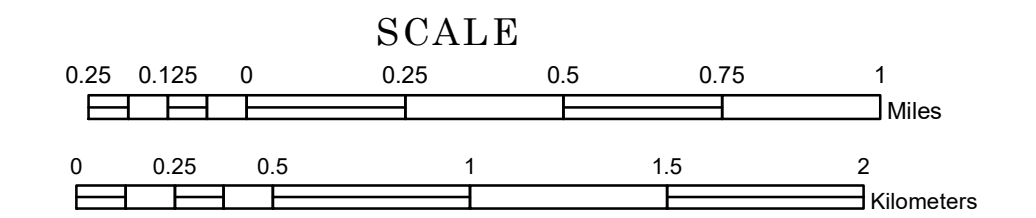


TOWNSHIP OF PLEASANT PRAIRIE

PREPARED BY THE
MINNESOTA DEPARTMENT OF TRANSPORTATION
OFFICE OF TRANSPORTATION SYSTEM MANAGEMENT

IN COOPERATION WITH
U.S. DEPARTMENT OF TRANSPORTATION
FEDERAL HIGHWAY ADMINISTRATION



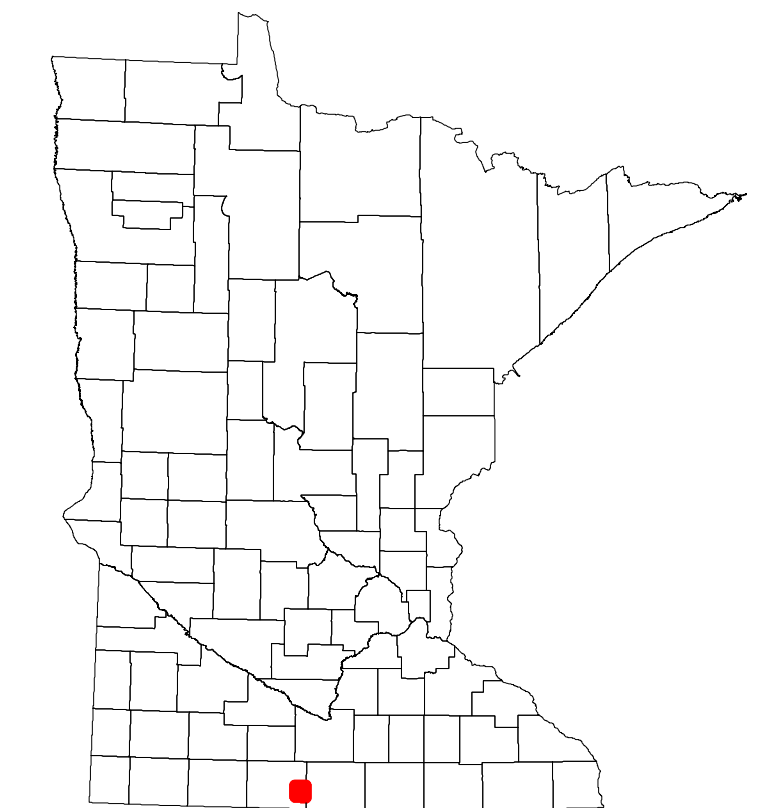
2023

Projection:
Transverse Mercator
NAD 1986
UTM Zone 15

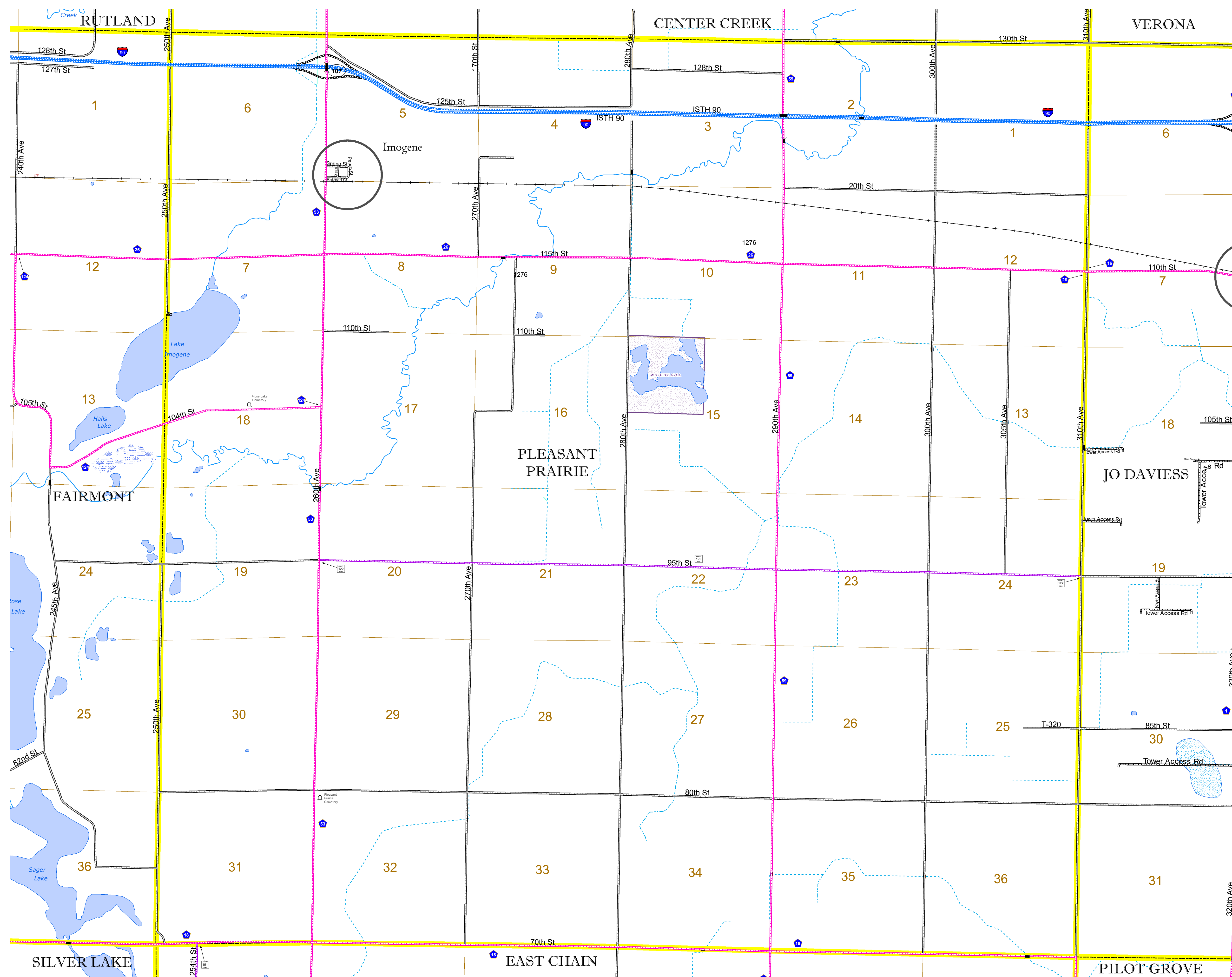


North American Datum
of 1986

ROAD AND ROADWAY FEATURES		AVIATION FEATURES	
INTERSTATE	CONCRETE	COMMERCIAL AIRPORT	GENERAL AIRPORT
US HIGHWAY	BITUMINOUS	AIRSTRIP	SEAPLANE
MN HIGHWAY	GRAVEL	AIRPORT RUNWAY	BOUNDARY FEATURES
COUNTY STATE AID HIGHWAY	DIRT/UNIMPROVED	TRIAL LAND	STATE OF MINNESOTA
COUNTY ROAD	OTHER	COUNTY	MUNICIPALITY
TOWNSHIP ROAD	UNKNOWN	UNORGANIZED TERRITORY	FEDERAL ADJUSTED URBAN AREA (2014)
UNORGANIZED TERRITORY ROAD		CIVIL TOWNSHIP	CONGRESSIONAL TOWNSHIP
OTHER ROADS		SECTION	MILITARY
Municipal		VOYAGEURS NATIONAL PARK	BOUNDARY WATERS CANOE AREA WILDERNESS
Private		STATE PARK	NATIONAL FOREST
National Monument		NATIONAL AND STATE FOREST	STATE FOREST
National Wildlife Refuge		WILDLIFE REFUGUE AREA	WILDLIFE MANAGEMENT AREA
State Park		HYDROLOGIC FEATURES	RIVER OR STREAM (PERMANENT)
Preserve		LAKE, POND OR RESERVOIR	STREAM (INTERMITTENT)
		DRAINAGE DITCH	WETLAND
		ISLAND OR LAND	REGIONAL WATERSHED



Population (U.S. Census 2010): 243



To request information from this document in an alternative format, call 651-366-4718 or 1-800-657-3774 (Greater Minnesota); 711 or 1-800-627-3529 (Minnesota Relay). You may also send an e-mail to ADRequest.dot@state.mn.us. (Please request at least one week in advance.)