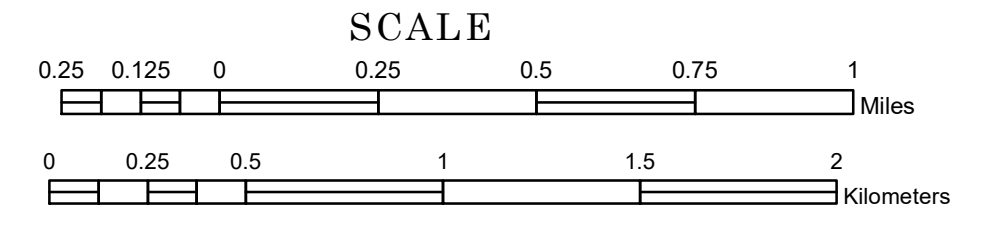


TOWNSHIP OF ACTON

PREPARED BY THE
MINNESOTA DEPARTMENT OF TRANSPORTATION
OFFICE OF TRANSPORTATION SYSTEM MANAGEMENT

IN COOPERATION WITH
U.S. DEPARTMENT OF TRANSPORTATION
FEDERAL HIGHWAY ADMINISTRATION



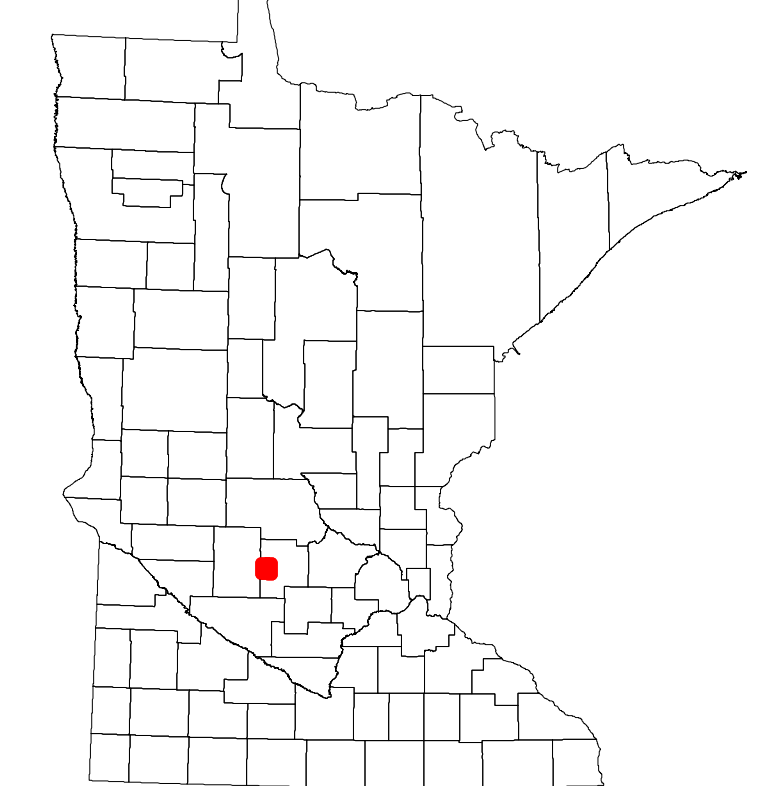
1 in = 1,600 ft
2023

Projection:
Transverse Mercator
NAD 1986
UTM Zone 15

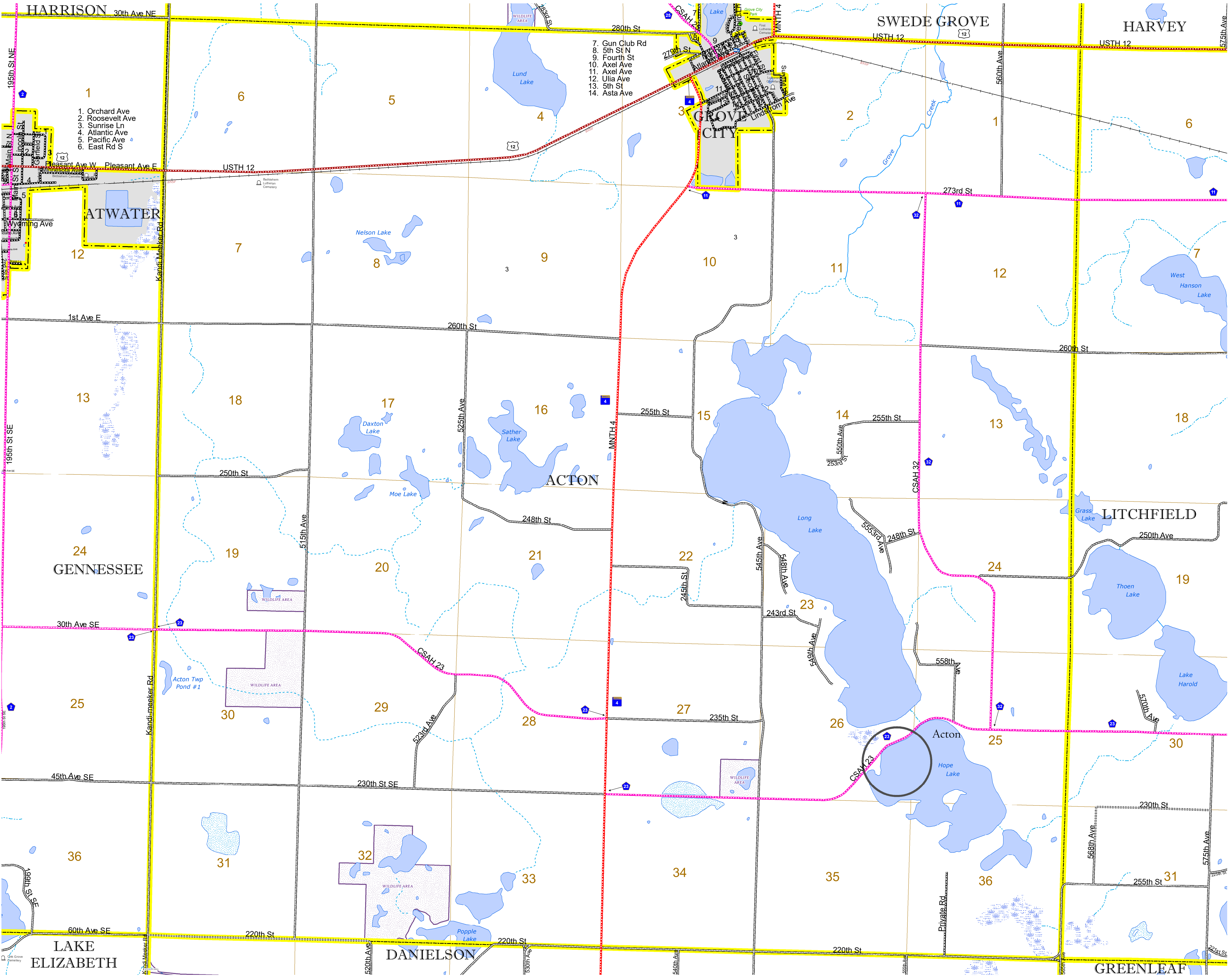
North American Datum
of 1986



INTERSTATE	ROAD AND ROADWAY FEATURES	CONCRETE
US HIGHWAY		BITUMINOUS
MN HIGHWAY		GRAVEL
COUNTY STATE AID HIGHWAY		DIRT/UNIMPROVED
COUNTY ROAD		OTHER
TOWNSHIP ROAD		UNKNOWN
UNORGANIZED TERRITORY ROAD		
OTHER ROADS		RAMP OR CONNECTOR
Municipal		INTERSTATE EXIT
Private		GREAT RIVER ROAD
National Monument	RAILROAD AND RAILWAY FEATURES	AVIATION FEATURES
National Wildlife Refuge		COMMERCIAL AIRPORT
State Park		GENERAL AIRPORT
Preserve		AIRSTRIP
		SEAPLANE
		AIRPORT RUNWAY
		BOUNDARY FEATURES
		TRIBAL LAND
		STATE OF MINNESOTA
		COUNTY
		MUNICIPALITY
		UNORGANIZED TERRITORY
		FEDERAL ADJUSTED URBAN AREA (2014)
		CIVIL TOWNSHIP
		CONGRESSIONAL TOWNSHIP
		SECTION
		MILITARY
		VOYAGEURS NATIONAL PARK
		BOUNDARY WATERS CANOE AREA WILDERNESS
		STATE PARK
		REGIONAL PARK
		NATIONAL FOREST
		NATIONAL AND STATE FOREST
		STATE FOREST
		NATIONAL TRAIL
		WILDLIFE REFUGUE AREA
		WILDLIFE MANAGEMENT AREA
		HYDROLOGIC FEATURES
		RIVER OR STREAM (PERENNIAL)
		LAKE, POND OR RESERVOIR
		STREAM (INTERMITTENT)
		DRAINAGE DITCH
		WETLAND
		ISLAND OR LAND
		REGIONAL WATERSHED



Population (U.S. Census 2010): 375



To request information from this document in an alternative format, call 651-366-4718 or 1-800-657-3774 (Greater Minnesota); 711 or 1-800-627-3529 (Minnesota Relay). You may also send an e-mail to ADArequest.dot@state.mn.us. (Please request at least one week in advance.)