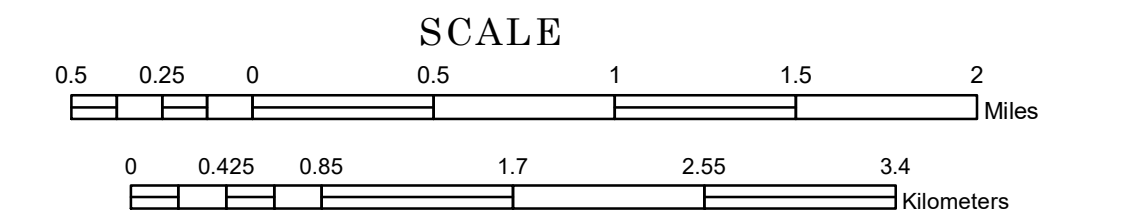


TOWNSHIP OF KATHIO

PREPARED BY THE
MINNESOTA DEPARTMENT OF TRANSPORTATION
OFFICE OF TRANSPORTATION SYSTEM MANAGEMENT

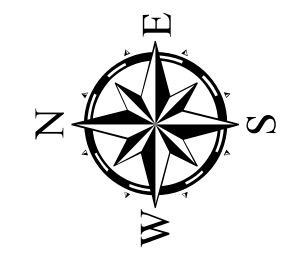
IN COOPERATION WITH
U.S. DEPARTMENT OF TRANSPORTATION
FEDERAL HIGHWAY ADMINISTRATION



1 in = 2,800 ft

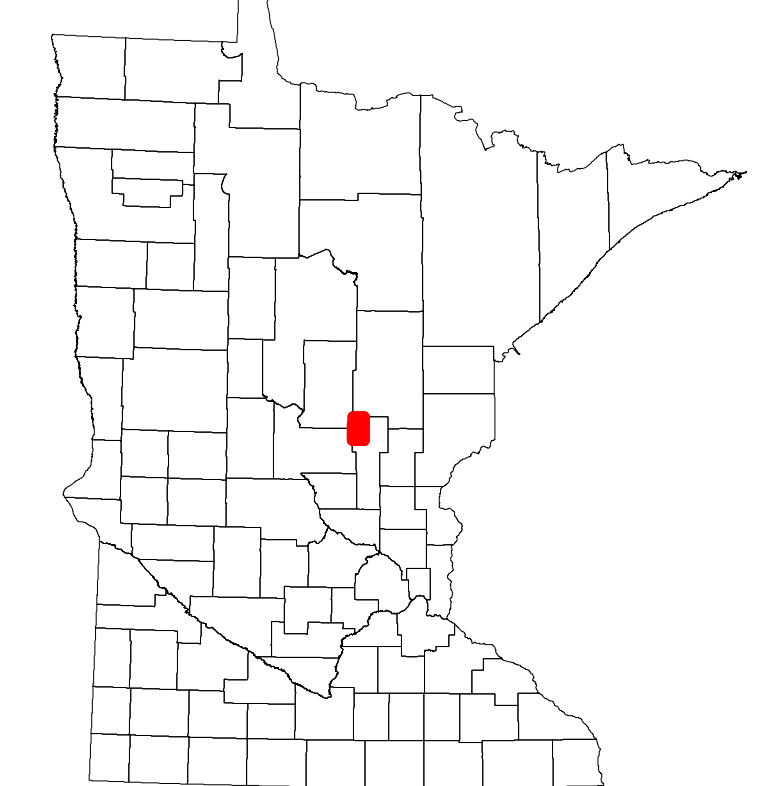
2023

Projection:
Transverse Mercator
NAD 1986
UTM Zone 15

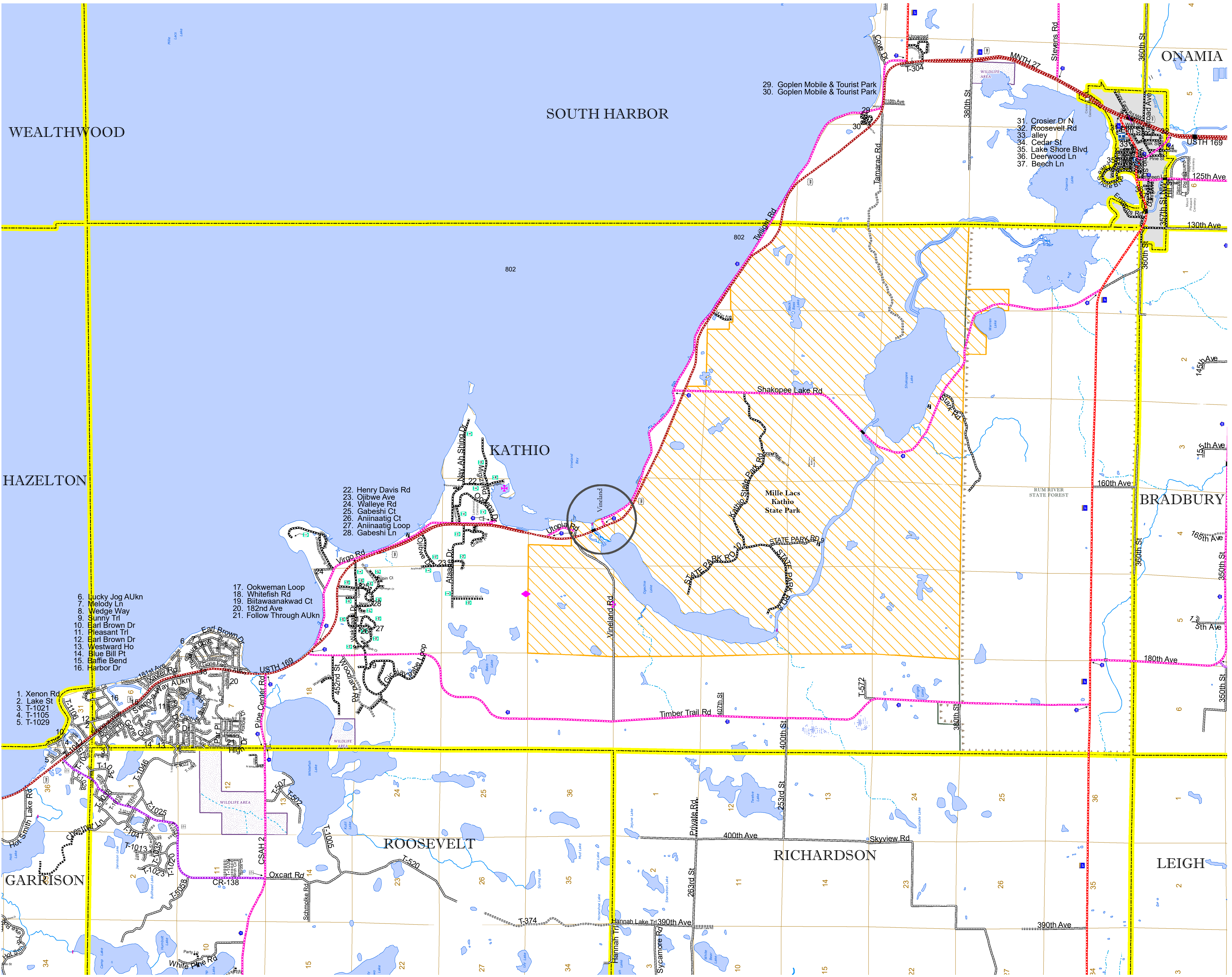


North American Datum
of 1986

| ROAD AND ROADWAY FEATURES | | BOUNDARY FEATURES | |
|--|----------|---------------------------------------|----------|
| INTERSTATE | [Symbol] | CONCRETE | [Symbol] |
| US HIGHWAY | [Symbol] | BITUMINOUS | [Symbol] |
| MN HIGHWAY | [Symbol] | GRAVEL | [Symbol] |
| COUNTY STATE AID HIGHWAY | [Symbol] | DIRT/UNIMPROVED | [Symbol] |
| COUNTY ROAD | [Symbol] | OTHER | [Symbol] |
| TOWNSHIP ROAD | [Symbol] | UNKNOWN | [Symbol] |
| UNORGANIZED TERRITORY ROAD | [Symbol] | | |
| OTHER ROADS | | | |
| Municipal | [Symbol] | RAMP OR CONNECTOR | [Symbol] |
| Private | [Symbol] | INTERSTATE EXIT | [Symbol] |
| National Monument | [Symbol] | STATE PARK | [Symbol] |
| National Wildlife Refuge | [Symbol] | NATIONAL FOREST | [Symbol] |
| State Game Preserve | [Symbol] | STATE PARK | [Symbol] |
| | | Preserve | [Symbol] |
| RAILROAD AND RAILWAY FEATURES | | AVIATION FEATURES | |
| EMPIRE BUILDER STATION (AMTRAK) | [Symbol] | COMMERCIAL AIRPORT | [Symbol] |
| NORTHSTAR STATION (COMASTER) | [Symbol] | GENERAL AIRPORT | [Symbol] |
| | | AIRSTRIP | [Symbol] |
| | | SEAPLANE | [Symbol] |
| | | AIRPORT RUNWAY | [Symbol] |
| INFRASTRUCTURE FEATURES | | CITY CENTERS | |
| LONG BRIDGE (200' OR GREATER SPAN) | [Symbol] | STATE CAPITAL | [Symbol] |
| MAJOR BRIDGE (20' TO 200' SPAN) | [Symbol] | COUNTY SEAT | [Symbol] |
| MINOR BRIDGE (5' TO 20' SPAN) | [Symbol] | CITY CENTER | [Symbol] |
| DAM | [Symbol] | UNINCORPORATED COMMUNITY | [Symbol] |
| LOCK AND DAM | [Symbol] | | |
| PUBLIC SERVICE FEATURES | | SECTION | |
| MNDOT OFFICE | [Symbol] | MILITARY | [Symbol] |
| MNDOT TRUCK STATION | [Symbol] | VOYAGEURS NATIONAL PARK | [Symbol] |
| HIGHWAY PATROL DISTRICT OFFICE | [Symbol] | BOUNDARY WATERS CANOE AREA WILDERNESS | [Symbol] |
| STATE TRAVEL INFORMATION CENTER | [Symbol] | STATE PARK | [Symbol] |
| REST AREA (Full Service) | [Symbol] | REGIONAL PARK | [Symbol] |
| REST AREA (Vault Toilets) | [Symbol] | NATIONAL FOREST | [Symbol] |
| WAYSIDE (Vault or Pit Toilets) | [Symbol] | NATIONAL AND STATE FOREST | [Symbol] |
| PARK AND RIDE LOT | [Symbol] | STATE FOREST | [Symbol] |
| PORT OF ENTRY | [Symbol] | WILDLIFE REFUGE AREA | [Symbol] |
| PUBLIC ACCESS POINT | [Symbol] | WILDLIFE MANAGEMENT AREA | [Symbol] |
| MN STATE COLLEGE AND UNIVERSITY SYSTEM (MNSCU) | [Symbol] | HYDROLOGIC FEATURES | |
| UNIVERSITY OF MN SYSTEM | [Symbol] | RIVER OR STREAM (Perennial) | [Symbol] |
| FARMGROUNDS | [Symbol] | LAKE, POND OR RESERVOIR | [Symbol] |
| CULTURAL FEATURES | | STREAM (Intermittent) | [Symbol] |
| STATE HISTORICAL MARKER | [Symbol] | DRAINAGE DITCH | [Symbol] |
| HISTORIC DISTRICT | [Symbol] | WETLAND | [Symbol] |
| HISTORIC SITE | [Symbol] | ISLAND OR LAND | [Symbol] |
| MONUMENT | [Symbol] | REGIONAL WATERSHED | [Symbol] |



Population (U.S. Census 2010): 1627



To request information from this document in an alternative format, call 651-366-4718 or 1-800-657-3774 (Greater Minnesota); 711 or 1-800-627-3529 (Minnesota Relay). You may also send an e-mail to ADARquest.dot@state.mn.us. (Please request at least one week in advance.)