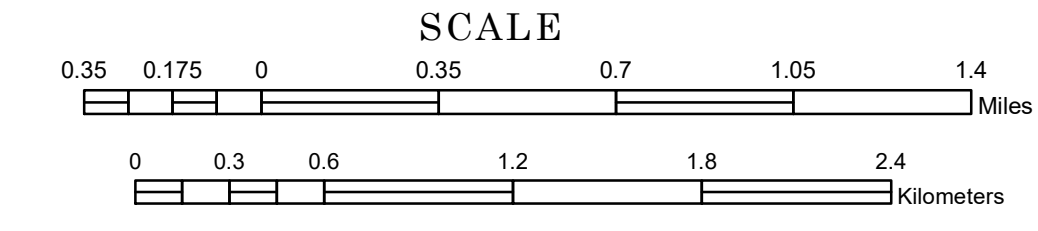


TOWNSHIP OF BUCKMAN

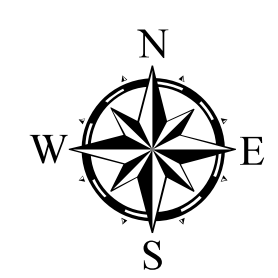
PREPARED BY THE
MINNESOTA DEPARTMENT OF TRANSPORTATION
OFFICE OF TRANSPORTATION SYSTEM MANAGEMENT

IN COOPERATION WITH
U.S. DEPARTMENT OF TRANSPORTATION
FEDERAL HIGHWAY ADMINISTRATION

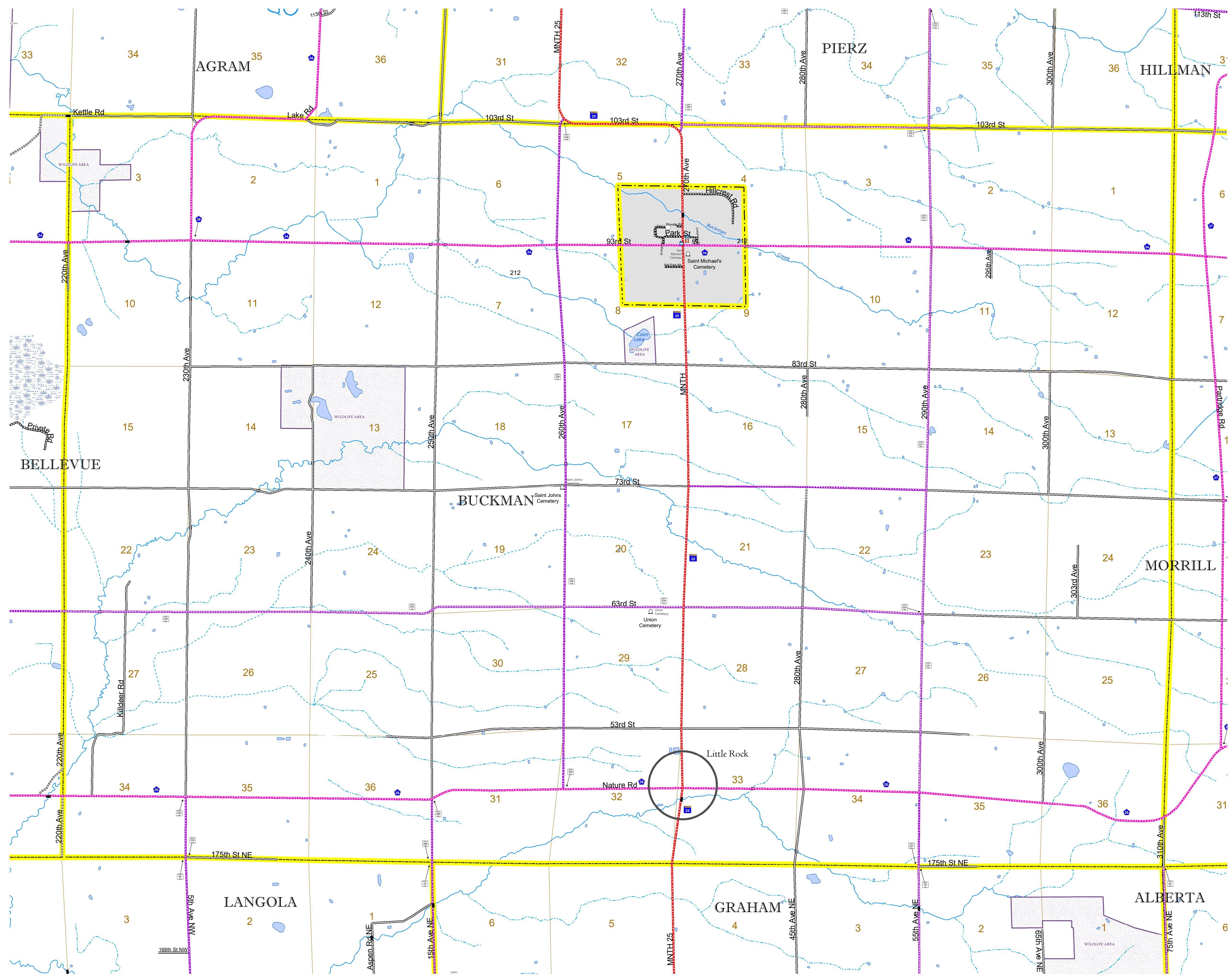


1 in = 2,000 ft
2024

Projection:
Transverse Mercator
NAD 1986
UTM Zone 15



North American Datum
of 1986



ROAD AND ROADWAY FEATURES		AVIATION FEATURES	
INTERSTATE	CONCRETE	COMMERCIAL AIRPORT	GENERAL AIRPORT
US HIGHWAY	BITUMINOUS	AIRSTRIP	SEAPLANE
MN HIGHWAY	GRAVEL	AIRPORT RUNWAY	
COUNTY STATE AID HIGHWAY	DIRT/UNIMPROVED		
COUNTY ROAD	OTHER		
TOWNSHIP ROAD	UNKNOWN		
UNORGANIZED TERRITORY ROAD			
OTHER ROADS			
Municipal Private National Monument State Forest			
Nature Service National Park National Wildlife State Game			
Mulden National Forest State Park Preserve			
RAILROAD AND RAILWAY FEATURES		BOUNDARY FEATURES	
EMPIRE BUILDER STATION (AMTRAK)	TRIBAL LAND	STATE OF MINNESOTA	COUNTY
NORTHSTAR STATION (COMMUTER)	STATE OF MINNESOTA	MUNICIPALITY	UNORGANIZED TERRITORY
LIGHT RAIL	FEDERAL ADJUSTED URBAN AREA (2014)	CIVIL TOWNSHIP	CONGRESSIONAL TOWNSHIP
BLUE LINE		SECTION	MILITARY
GREEN LINE		VOYAGEURS NATIONAL PARK	BOUNDARY WATERS CANOE AREA WILDERNESS
INFRASTRUCTURE FEATURES		STATE PARK	REGIONAL PARK
LONG BRIDGE (200' or Greater Span)		NATIONAL FOREST	NATIONAL AND STATE FOREST
MAJOR BRIDGE (20' to 200' Span)		STATE FOREST	WILDLIFE REFUGUE AREA
MINOR BRIDGE (5' to 20' Span)		NATIONAL TRAIL	WILDLIFE MANAGEMENT AREA
DAM		WILDLIFE REFUGUE AREA	HYDROLOGIC FEATURES
LOCK AND DAM		WILDLIFE MANAGEMENT AREA	RIVER OR STREAM (PERMANENT)
CITY CENTERS		LAKE, POND OR RESERVOIR	STREAM (INTERMITTENT)
STATE CAPITAL	COUNTY SEAT	DRAINAGE DITCH	WETLAND
CITY CENTER	UNINCORPORATED COMMUNITY	ISLAND OR LAND	REGIONAL WATERSHED
PUBLIC SERVICE FEATURES			
MNDOT OFFICE			
MNDOT TRUCK STATION			
HIGHWAY PATROL DISTRICT OFFICE			
STATE TRAVEL INFORMATION CENTER			
REST AREA (Full Service)			
REST AREA (Vault Toilet)			
WAYSIDE (Vault or Pit Toilet)			
PARK AND RIDE LOT			
PORT OF ENTRY			
PUBLIC ACCESS POINT			
MN STATE COLLEGE AND UNIVERSITY SYSTEM (MNSCU)			
UNIVERSITY OF MN SYSTEM			
FAIRGROUNDS			
CULTURAL FEATURES			
STATE HISTORICAL MARKER			
HISTORIC DISTRICT			
HISTORIC SITE			
MONUMENT			



Population (U.S. Census 2010): 733

To request information from this document in an alternative format, call 651-366-4718 or 1-800-657-3774 (Greater Minnesota); 711 or 1-800-627-3529 (Minnesota Relay). You may also send an e-mail to ADARrequest.dot@state.mn.us. (Please request at least one week in advance.)