

TOWNSHIP OF HILLMAN

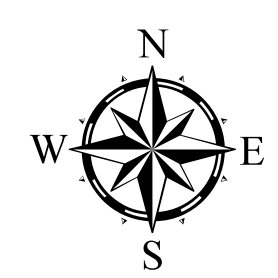
PREPARED BY THE
MINNESOTA DEPARTMENT OF TRANSPORTATION
OFFICE OF TRANSPORTATION SYSTEM MANAGEMENT

IN COOPERATION WITH
U.S. DEPARTMENT OF TRANSPORTATION
FEDERAL HIGHWAY ADMINISTRATION

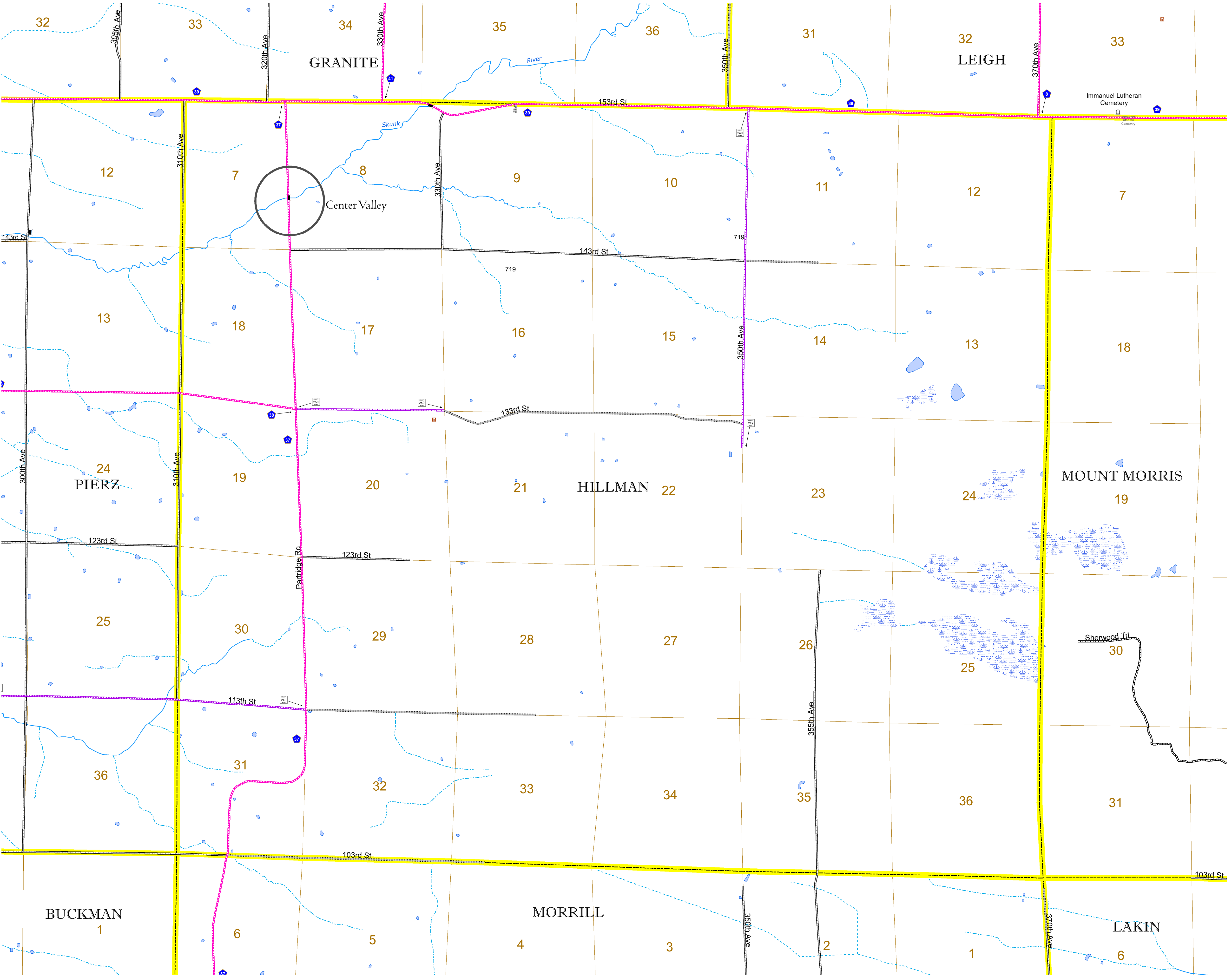


2024

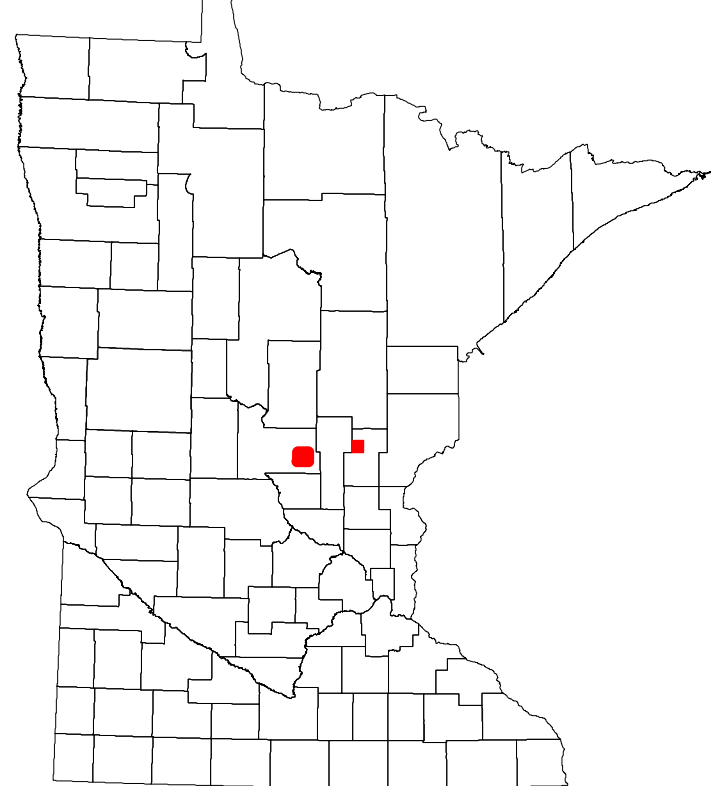
Projection:
Transverse Mercator
NAD 1986
UTM Zone 15



North American Datum
of 1986



ROAD AND ROADWAY FEATURES		BOUNDARY FEATURES	
INTERSTATE	[Symbol]	CONCRETE	[Symbol]
US HIGHWAY	[Symbol]	BITUMINOUS	[Symbol]
MN HIGHWAY	[Symbol]	GRAVEL	[Symbol]
COUNTY STATE AID HIGHWAY	[Symbol]	DIRT/UNIMPROVED	[Symbol]
COUNTY ROAD	[Symbol]	OTHER	[Symbol]
TOWNSHIP ROAD	[Symbol]	UNKNOWN	[Symbol]
UNORGANIZED TERRITORY ROAD	[Symbol]		
OTHER ROADS	[Symbol]	RAMP OR CONNECTOR	[Symbol]
Municipal	[Symbol]	INTERSTATE EXIT	[Symbol]
Private	[Symbol]	AVIATION FEATURES	
National Monument	[Symbol]	COMMERCIAL AIRPORT	[Symbol]
State Forest	[Symbol]	GENERAL AIRPORT	[Symbol]
National Park	[Symbol]	AIRSTRIP	[Symbol]
National Wildlife Refuge	[Symbol]	SEAPLANE	[Symbol]
State Park	[Symbol]	AIRPORT RUNWAY	[Symbol]
Preserve	[Symbol]		
RAILROAD AND RAILWAY FEATURES		BOUNDARY FEATURES	
EMPIRE BUILDER STATION (AMTRAK)	[Symbol]	TRIBAL LAND	[Symbol]
NORTHSTAR STATION (COMPUTER)	[Symbol]	STATE OF MINNESOTA	[Symbol]
LIGHT RAIL	[Symbol]	COUNTY	[Symbol]
BLUE LINE	[Symbol]	MUNICIPALITY	[Symbol]
GREEN LINE	[Symbol]	UNORGANIZED TERRITORY	[Symbol]
INFRASTRUCTURE FEATURES		FEDERAL ADJUSTED URBAN AREA (2014)	
LONG BRIDGE (200' OR GREATER SPAN)	[Symbol]	CIVIL TOWNSHIP	[Symbol]
MAJOR BRIDGE (20' TO 200' SPAN)	[Symbol]	CONGRESSIONAL TOWNSHIP	[Symbol]
MINOR BRIDGE (5' TO 20' SPAN)	[Symbol]		
DAM	[Symbol]	CITY CENTERS	
LOCK AND DAM	[Symbol]	STATE CAPITAL	[Symbol]
		COUNTY SEAT	[Symbol]
		CITY CENTER	[Symbol]
		UNINCORPORATED COMMUNITY	[Symbol]
		PUBLIC SERVICE FEATURES	
MNDOT OFFICE	[Symbol]	MNDOT TRUCK STATION	[Symbol]
HIGHWAY PATROL DISTRICT OFFICE	[Symbol]	STATE TRAVEL INFORMATION CENTER	[Symbol]
REST AREA (FULL SERVICE)	[Symbol]	REST AREA (VAULT TOILET)	[Symbol]
WAYSIDE (VAULT OR PITY TOILET)	[Symbol]	PARK AND RIDE LOT	[Symbol]
PORT OF ENTRY	[Symbol]	PUBLIC ACCESS POINT	[Symbol]
MN STATE COLLEGE AND UNIVERSITY SYSTEM (MNSCU)	[Symbol]	UNIVERSITY OF MN SYSTEM	[Symbol]
FAIRGROUNDS	[Symbol]	CULTURAL FEATURES	
		STATE HISTORICAL MARKER	[Symbol]
		HISTORIC DISTRICT	[Symbol]
		HISTORIC SITE	[Symbol]
		MONUMENT	[Symbol]
		HYDROLOGIC FEATURES	
RIVER OR STREAM (PERENNIAL)	[Symbol]	LAKE, POND OR RESERVOIR	[Symbol]
STREAM (INTERMITTENT)	[Symbol]	DRAINAGE DITCH	[Symbol]
WETLAND	[Symbol]	ISLAND OR LAND	[Symbol]
REGIONAL WATERSHED	[Symbol]		



Population (U.S. Census 2010): 197

To request information from this document in an alternative format, call 651-366-4718 or 1-800-657-3774 (Greater Minnesota); 711 or 1-800-627-3529 (Minnesota Relay). You may also send an e-mail to ADAREquest.dot@state.mn.us. (Please request at least one week in advance.)