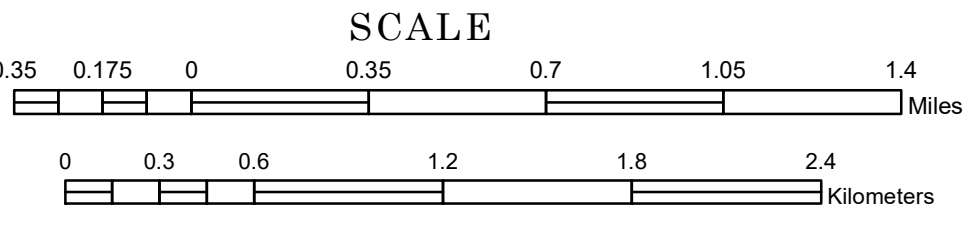


TOWNSHIP OF LITTLE FALLS

PREPARED BY THE
MINNESOTA DEPARTMENT OF TRANSPORTATION
OFFICE OF TRANSPORTATION SYSTEM MANAGEMENT

IN COOPERATION WITH
U.S. DEPARTMENT OF TRANSPORTATION
FEDERAL HIGHWAY ADMINISTRATION

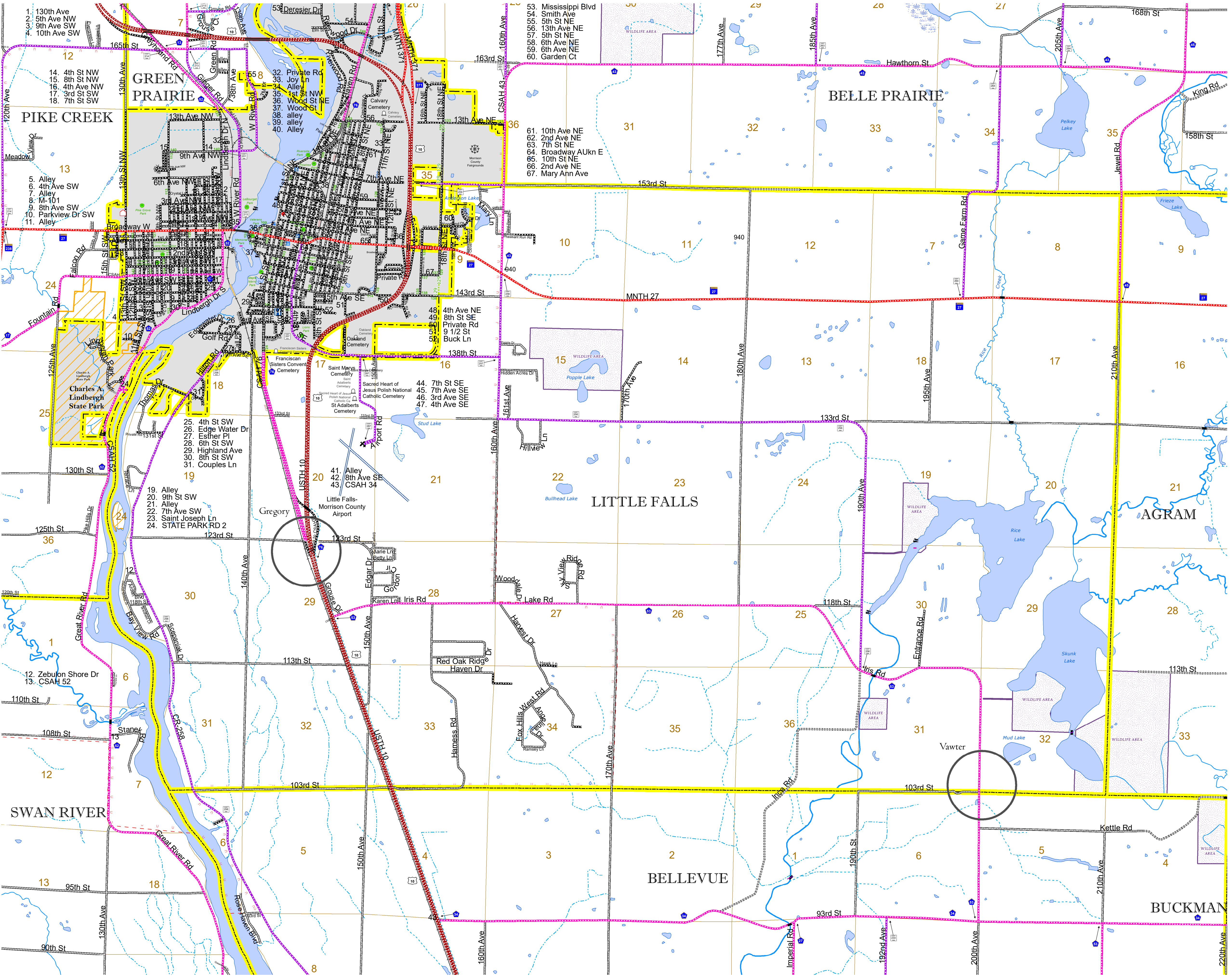


2024

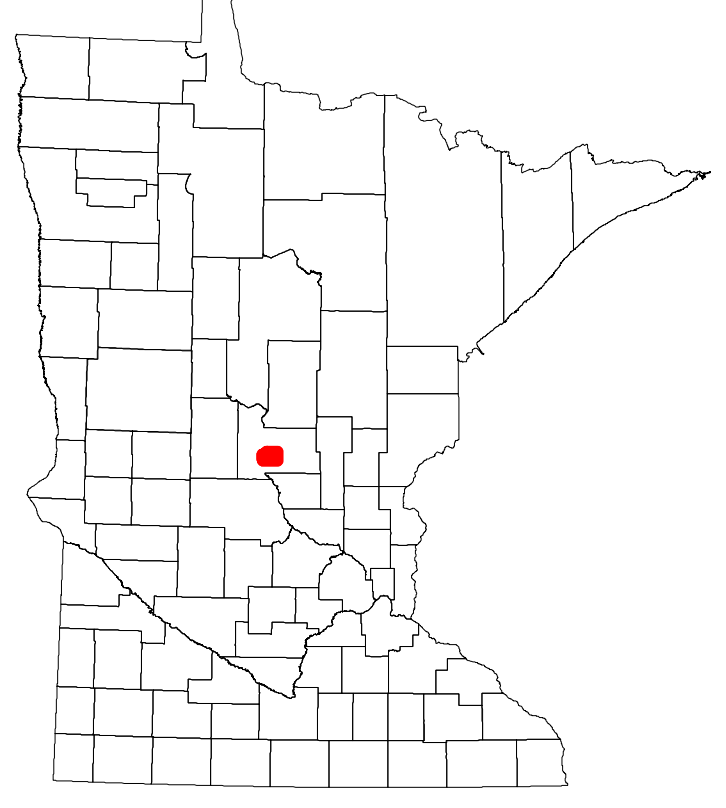
Projection:
Transverse Mercator
NAD 1986
UTM Zone 15



North American Datum
of 1986



ROAD AND ROADWAY FEATURES		RAILROAD AND RAILWAY FEATURES		AVIATION FEATURES	
INTERSTATE	CONCRETE	COMMERCIAL AIRPORT	GENERAL AIRPORT	TRIBAL LAND	BOUNDARY FEATURES
US HIGHWAY	BITUMINOUS	EMPIRE BUILDER STATION (AMTRAK)	AIRSTRIP	STATE OF MINNESOTA	COUNTY
MN HIGHWAY	GRAVEL	NORTHSTAR STATION (COMPUTER)	SEAPLANE	MUNICIPALITY	MUNICIPALITY
COUNTY STATE AID HIGHWAY	DIRT/UNIMPROVED	BLUE LINE	AIRPORT RUNWAY	UNORGANIZED TERRITORY	UNORGANIZED TERRITORY
COUNTY ROAD	OTHER	GREEN LINE	LOCK AND DAM	FEDERAL ADJUSTED URBAN AREA (2014)	CIVIL TOWNSHIP
TOWNSHIP ROAD	UNKNOWN	LONG BRIDGE (200' OR GREATER SPAN)	STATE CAPITAL	CONGRESSIONAL TOWNSHIP	SECTION
UNORGANIZED TERRITORY ROAD		MAJOR BRIDGE (20' TO 200' SPAN)	COUNTY SEAT	COMMUNITY	MILITARY
OTHER ROADS		MINOR BRIDGE (5' TO 20' SPAN)	CITY CENTER	UNINCORPORATED	VOYAGEURS NATIONAL PARK
MUNICIPAL		LOCK AND DAM	CITY CENTER	COMMUNITY	BOUNDARY WATERS CANOE AREA WILDERNESS
PRIVATE					STATE PARK
NATIONAL MONUMENT					REGIONAL PARK
STATE FOREST					NATIONAL FOREST
NATIONAL WILDLIFE REFUGES					NATIONAL AND STATE FOREST
STATE PARK					STATE FOREST
NATIONAL FOREST					WILDLIFE REFUGE AREA
STATE FOREST					WILDLIFE MANAGEMENT AREA
WILDLIFE REFUGE AREA					HYDROLOGIC FEATURES
WILDLIFE MANAGEMENT AREA					RIVER OR STREAM (PERENNIAL)
HYDROLOGIC FEATURES					LAKE, POND OR RESERVOIR
RIVER OR STREAM (PERENNIAL)					STREAM (INTERMITTENT)
LAKE, POND OR RESERVOIR					DRAINAGE DITCH
STREAM (INTERMITTENT)					WETLAND
DRAINAGE DITCH					ISLAND OR LAND
WETLAND					REGIONAL WATERSHED
ISLAND OR LAND					
REGIONAL WATERSHED					



Population (U.S. Census 2010): 1682

To request information from this document in an alternative format, call 651-366-4718 or 1-800-657-3774 (Greater Minnesota); 711 or 1-800-627-3529 (Minnesota Relay). You may also send an e-mail to ADRequest.dot@state.mn.us. (Please request at least one week in advance.)